

Your mobile



1.1 Keys

- Navigation key**
Confirm an option (press the middle of the key)
Access to menu (short keypress)
Show/hide shortlist menu(long keypress)
- Pick up**
Send a call
Access call memory (short keypress)
Access to Fake call (long keypress)
- Switch on/Switch off the telephone (long keypress)**
End call
Return to the idle screen
- Left softkey**
- Right softkey**
- Access your voicemail (long keypress)**
- Input the "#"** in Idle
- In idle screen:**
Long/short keypress: Lock/Unlock the keypad
- In edit mode:**
Short keypress: input space
Long keypress: switch language
Fn key + Space: switch input mode

1.2 Main screen icons (1)

- Battery charge level**
Vibrate alert: Your phone vibrates, but does not ring or beep with the exception of the alarm.
 - Headset connected.**
 - Keypad locked.**
 - Call forwarding activated:** your calls are forwarded.
- In idle screen:
Press to access shortcuts
Fn + P: access to Profiles
Fn + Q: access to Clock
Fn + S: access to Notes
In edit mode:
Press once to input top-half character.
Press twice to lock top-half inputting mode, then press once to unlock top-half inputting mode.
Long keypress: access to Dictionary.
- In edit mode:
Short press: popup symbol page to select special character by navigation key
Long press & Fn+SYM: popup smileys page to select special smileys by navigation key
- Delete one by one (short keypress)
Delete one by one quickly (long keypress)
- Switch the uppercase and minuscule (in edit screen)
- Return a cursor to the next line.

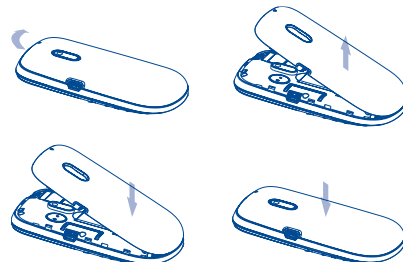
2 Getting started

- Alarm clock.**
- Level of network reception.**
- Voicemail message arrived.**
- Missed calls.**
- Radio is on.**
- Stopwatch is active.**
- WAP alerts (1).**
- Roaming.**
- Memory card scanning in progress.**
- Memory card scanning completed.**
- Line switching (2):** indicates the selected line.
- GPRS connection status (Blue - Activated).**
- GPRS connecting.**
- Message receipt in progress.**
- Sending a message.**
- Silence mode:** your phone neither rings, beeps nor vibrates except for the alarms.
- Message unread.**
- Message list is full:** your terminal cannot accept any new messages. You must access the message list and delete at least one message on your SIM card.
- Flight mode.**

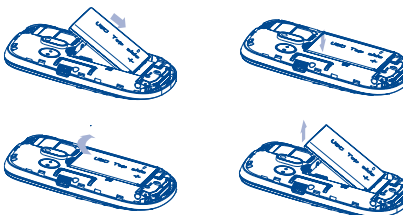
2 Getting started

2.1 Set-up

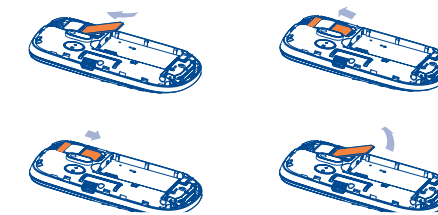
Removing or installing the back cover



Installing or removing the battery



Inserting or removing the SIM card



Place the SIM card with the chip facing downwards and slide it into its housing. Make sure that it is correctly inserted. To remove the card, press the bottom and slide it out. Please power off your phone before you remove the SIM card.

2.2 Power on your phone

Hold down the key until the telephone powers on.

2.3 Power off your phone

Hold down the key until the telephone power off.

3.2 Call memory

You can access your call memory by pressing the key from the idle screen. Check "Outgoing calls", "Missed calls", "Answered calls".

4 Menu arrange

Main Menu is designed to vary according to your preference.

Change the order

From main menu, press left softkey and select "Move" or long keypress key till tick "" is shown, then move the cursor to your favorite destination and confirm with key.

Show/Hide

Access "Menu arrange", press key till tick (")" show or off, it will show/hide some main menu.

5 Messages

5.1 Messages: Text/Multimedia message

5.1.1 Create message

From the main menu select "Messages" to create text/multimedia message.

You can type a message and you can also modify a predefined message in **Templates** or customise your message by adding pictures, photos, sounds, titles, etc (only available while editing a MMS). While writing a message, select "Options" to access all the messaging options. You can save your messages that you send often to **Drafts** or **Templates** (MMS only).

3 Calls

3.1 Making a call

Dial the desired number then press the key to place the call. If you make a mistake, you can delete the incorrect digits by pressing the right softkey or key.

To hang up the call, press the key.

Making an emergency call

If your phone has network coverage, dial emergency number and press the key to make an emergency call. This works even without a SIM card and without typing the PIN code or unlocking the keypad.

(1) Depending on your network operator.

OT-355
ALCATEL
mobile phones

5.1.2 Inbox

All received messages (read and unread) are stored in the same Inbox.

Group by sender/Group by receiver (1)

Messages can be grouped by sender/receiver ("Options/Group by sender"/"Options/Group by receiver"). And you are enabled to quick search the messages by pressing the key associated with the first letter of sender/receiver's name.

5.2 SMS Conversation (chat) (2)

Access to "Advanced" and select "Switch view mode", keep the conversation going in real time using SMS chat. You may separate chat for every contact with whom you exchange short text messages.

5.3 Email (3)

Your phone has an email client with the settings predefined for a few popular email services like - GoogleMail, Windows live, Yahoo, AOL, etc.

6 Directory

6.1 Consulting your directory

To access the **Directory** from the main screen, press the key and select the icon.

6.2 Adding a contact

Select the contacts list in which you wish to add a contact to, press the "Options" softkey, select "Add contact" then Save.

7 Fake call

Protect yourself from annoying situations with the "Fake call". In this menu, you can set "Caller name/nb", "Call time" and "Ringtone".

When the timer reaches, the phone will ring and display like receiving a real phone call. Press key, pretend answering a call, the screen will display just like have an ongoing call. Press key, pretend to reject the call, the call will terminate automatically.

8 Radio

Your phone is equipped with a Radio (1) with RDS functionality. You can use the application as a traditional Radio with saved channels or with parallel visual information related to the radio program on the display, if you tune to stations that offer Visual Radio service. You can listen to it while running other applications.

9 Internet (2)

Access WAP options: **Homepage**, **Bookmarks**, **Go to URL**, **Recent pages**, **Offline pages**.

9.1 WAP

Your phone is equipped with a weather function for consulting up to 3-day forecast of favorite cities.

9.2 Weather

9.3 News

It is a huge time saver providing news updates from a website in a simple form. Once subscribed to a channel, it gives you the ability to track and manage all your favorite RSS content on your mobile phone at anytime, anywhere!

Available options:

- View** Message title or message summary of a channel with URL will be shown.
- Update** Refresh the content of a channel.
- Create channel** Create a new channel with name and URL.
- Delete** Delete the channel.
- Edit** Edit the name or URL of a channel.
- Update all** Refresh all channels.
- Settings** Select a regular interval to retrieve updates automatically, set to show images or not, as well as a WAP account to connect to.
- Enable/Disable all auto-update** Activate auto-update or not to all channels.
- Send** Share a channel with your friend by sending it by SMS, MMS or Email.

10 ICE

ICE (in case of emergency) are 3 numbers emergency services can call if you have an accident, you can also add useful information such as blood type, allergy. Access to "ICE" menu from main menu and below options are available: View, Add/Edit, Delete.

11 Games

Your phones includes some games. Select "Game settings", it allows you to manage settings, in which you may set background audio and vibration alert.

12 Camera

Your mobile phone is fitted with a camera for taking photos that you can use in different ways:

- Store them in your "Media album/My creations".
- Send them in a multimedia message (MMS) to a mobile phone or an email address.
- Send them directly by Email.
- Customise your main screen.
- Select them as incoming call image to a contact in your directory.
- Transfer them by microSD card to your computer.

13 Profiles

With this menu, you may personalise ringtones for different events and environments.

14 Media album

You will have an access to all audio and visual files stored in phone or in Medium Album. You can access a number of items with this option: **My audios**, **My images**, **Unknown files** and **Memory status**.

Inserting the memory card



- Unclip the cover and insert the MicroSD card with golden contact downwards into the slot.
- Unclip the cover and gently push the memory card until unlocked.
- Take out your MicroSD card and clip the cover closed.

15 Music Player

Access this feature from the main menu by selecting "Music player". You will have full flexibility of managing music both on your mobile and memory card.

16 Services

Contact your network operator to check service availability.

17 Others

17.1 Calendar

Once you enter this menu from main menu, there is a monthly-view calendar for you to keep track of important meetings, appointments, etc. Days with events entered will be marked in color.

17.2 Calculator

Access this feature by selecting "Calculator" from the main menu. Enter a number, select the type of operation to be performed using the navigation keys, and enter the second number, then press key or left softkey to display the result.

17.3 Notes

You can create a note in text or voice format by accessing "Notes" from main menu.

17.4 Tasks

Enables you to easily manage and track the progress of an task with priorities. All the tasks will be sorted by due date.

17.5 Clock

Your mobile phone has a built-in alarm clock with a snooze feature.

17.5.1 Alarm

Allows you to have settings of date and time, including 12/24h format.

17.5.2 World clock

The World clock shows current local time and the time zone in different cities.

17.5.3 Stopwatch

The stopwatch is a simple application for measuring time with the possibility to register several results and suspend/resume measurement.

17.5.4 Converter

Unit converter and Currency converter.

18 Settings

From the main menu, select the menu icon and select the function of your choice in order to customise your telephone: Display, Languages, Headset, Input mode, Vocabulary, Keys, Security, Networks, Connectivity, Restore default set, Call settings.

18.1 Keys

You may set the keypad to which you prefer to. Fn + Keys: you may define the combined Fn key function and to get shortcuts with below options: Edit/Add/Delete.

18.2 Call settings

My numbers

Type in or modify your telephone number and confirm by pressing key. Your telephone number is usually written on your SIM card.

Billings (1)

You can access different items with this option: **Amount**, **Duration**, **GPRS counter**, **Beep duration**.

(1) Depending on your network operator.

(1) The option of Group by receiver is available in Outbox, Sent, and Draft folders only.

(2) Depending on your network operator. May cause additional network charges for data flow to provide this service. Extra fees might also be charged in roaming states.

(3) HTML email and image in email not supported.

