

# Printer Guide

**EPSON Stylus® Pro 7000**

**EPSON®**



Printed on recycled paper with at least 10% post-consumer content.

Copyright © 2000 by Epson America, Inc.

All rights reserved. No part of this publication may be reproduced, stored in a retrieval system, or transmitted in any form or by any means, electronic, mechanical, photocopying, recording, or otherwise, without the prior written permission of SEIKO EPSON CORPORATION. The information contained herein is designed only for use with this EPSON printer. EPSON is not responsible for any use of this information as applied to other printers.

#### Trademarks

EPSON and EPSON Stylus are registered trademarks and ESC/P Raster and Micro Piezo are trademarks of SEIKO EPSON CORPORATION.

DX3 and SelecType are trademarks and EPSON Preferred is a service mark of Epson America, Inc.

EFI, the EFI logo, Fiery, and the Fiery logo are U.S. registered trademarks of Electronics for Imaging, Inc.

*General Notice:* Other product names used herein are for identification purposes only and may be trademarks of their respective owners. EPSON disclaims any and all rights in those marks.

The ENERGY STAR emblem does not represent EPA endorsement of any product or service.

#### Legal Notices

Neither SEIKO EPSON CORPORATION nor its affiliates shall be liable to the purchaser of this product or third parties for damages, losses, costs, or expenses incurred by purchaser or third parties as a result of: accident, misuse, or abuse of this product or unauthorized modifications, repairs, or alterations to this product, or (excluding the U.S.) failure to strictly comply with SEIKO EPSON CORPORATION's operating and maintenance instructions.

SEIKO EPSON CORPORATION shall not be liable for any damages or problems arising from the use of any options or any consumable products other than those designated as Original EPSON Products or EPSON Approved Products by SEIKO EPSON CORPORATION.

Declaration of Conformity

According to 47CFR, Part 2 and 15 for

Class B Personal Computers and Peripherals; and/or CPU Boards and Power Supplies used with Class B Personal Computers:

We: EPSON AMERICA, INC.  
Located at: 3840 Kilroy Airport Way  
MS: 6-43  
Long Beach, CA 90806-2469  
Tel: (562) 290-5254

Declare under sole responsibility that the product identified herein, complies with 47CFR Part 2 and 15 of the FCC rules as a Class B digital device. Each product marketed, is identical to the representative unit tested and found to be compliant with the standards. Records maintained continue to reflect the equipment being produced can be expected to be within the variation accepted, due to quantity production and testing on a statistical basis as required by 47CFR §2.909. Operation is subject to the following two conditions: (1) this device may not cause harmful interference, and (2) this device must accept any interference received, including interference that may cause undesired operation.

Trade Name: EPSON  
Type of Product: Ink Jet Printer  
Model: P180A

FCC Compliance Statement  
For United States Users

This equipment has been tested and found to comply with the limits for a Class B digital device, pursuant to Part 15 of the FCC Rules. These limits are designed to provide reasonable protection against harmful interference in a residential installation. This equipment generates, uses, and can radiate radio frequency energy and, if not installed and used in accordance with the instructions, may cause harmful interference to radio or television reception. However, there is no guarantee that interference will not occur in a particular installation. If this equipment does cause interference to radio and television reception, which can be determined by turning the equipment off and on, the user is encouraged to try to correct the interference by one or more of the following measures.

- Reorient or relocate the receiving antenna.
- Increase the separation between the equipment and receiver.
- Connect the equipment into an outlet on a circuit different from that to which the receiver is connected.
- Consult the dealer or an experienced radio/TV technician for help.

WARNING

The connection of a non-shielded equipment interface cable to this equipment will invalidate the FCC Certification of this device and may cause interference levels which exceed the limits established by the FCC for this equipment. It is the responsibility of the user to obtain and use a shielded equipment interface cable with this device. If this equipment has more than one interface connector, do not leave cables connected to unused interfaces. Changes or modifications not expressly approved by the manufacturer could void the user's authority to operate the equipment.

For Canadian Users

This Class B digital apparatus meets all requirements of the Canadian Interference-Causing Equipment Regulations.

*Cet appareil numérique de la classe B respecte toutes les exigences du Règlement sur le matériel brouilleur du Canada.*

# Contents

## Introduction

How To Use Your Manuals .....	2
Using This <i>Printer Guide</i> .....	3
Warnings, Cautions, Notes, and Tips .....	4
Where To Get Help .....	4
ENERGY STAR Compliance .....	5
Important Safety Instructions .....	6
Ink Cartridge Safety Instructions .....	7

## 1 Connecting Your Printer and Installing Drivers

Installing the EpsonNet Internal Print Server or FireWire Interface Card .....	1-1
Connecting to the USB Interface .....	1-5
Connecting to the Parallel Interface .....	1-6
Installing the Software and Setting Up Printer Sharing on a Macintosh .....	1-7
Checking System Requirements .....	1-7
Installing the Software .....	1-7
Setting Up Printer Sharing .....	1-8
Installing the Software and Setting Up Printer Sharing in Windows .	1-10
Checking System Requirements .....	1-10
Installing the Software .....	1-10
Checking USB Installation (Windows 98) .....	1-12
Setting Up Printer Sharing in Windows 95 and 98 .....	1-12
Setting Up Printer Sharing in Windows NT 4.0 .....	1-15

## 2 Handling Paper

Selecting Paper and Other Media .....	2-1
Printing on EPSON Paper and Film .....	2-2
Printing Tips for EPSON Media .....	2-3
Using Roll Paper .....	2-3
Attaching Paper to the Spindle .....	2-3
Removing Paper from the Spindle .....	2-4
Inserting the Spindle in the Printer .....	2-5
Loading Roll Paper for Printing .....	2-7
Cutting Roll Paper Manually .....	2-11

- Turning Off Trim Lines . . . . . 2-12
- Setting Default Roll Paper Margins . . . . . 2-12
- Using Cut Sheet Paper . . . . . 2-13
  - Using Cut Sheet Paper Longer Than 19 Inches . . . . . 2-14
  - Printing on Heavy Stock . . . . . 2-16
  - Adjusting the Platen Gap for Heavy Stock . . . . . 2-18
  - Turning Off Paper Monitoring Features . . . . . 2-18
- Using the Paper Hammock with the Printer Stand . . . . . 2-19
- Setting Paper Configurations . . . . . 2-21
  - Registering Paper Thickness, Drying Time, and Suction . . . . . 2-21
  - Selecting Registered Paper Settings . . . . . 2-22

### **3 Printing with EPSON Drivers for Macintosh**

- Choosing Page Setup Options . . . . . 3-1
- Choosing Basic Print Options . . . . . 3-3
  - Selecting the Correct Media Type . . . . . 3-5
- Choosing Advanced Print Options . . . . . 3-6
  - Color Management Settings . . . . . 3-8
- Managing Print Jobs . . . . . 3-9
  - Setting Up Background Printing . . . . . 3-9
  - Using Monitor3 . . . . . 3-10
  - Cancelling Printing . . . . . 3-12

### **4 Printing with EPSON Drivers for Windows**

- Choosing Basic Print Options . . . . . 4-1
  - Selecting the Correct Media Type . . . . . 4-4
- Choosing Paper and Layout Options . . . . . 4-5
- Choosing Advanced Print Options . . . . . 4-7
- Managing Print Jobs . . . . . 4-10
  - Using the Progress Meter . . . . . 4-10
  - Using the Spool Manager . . . . . 4-11

## 5 Monitoring the Printer

Checking Printer Status from the Control Panel . . . . .	5-1
Pausing and Resetting the Printer . . . . .	5-2
Monitoring Normal Printer Operation . . . . .	5-2
Checking Ink Levels and Component Life . . . . .	5-3
Printing a Status Check . . . . .	5-4
Responding to Messages and Light Indicators . . . . .	5-5
Checking Printer Status from a Macintosh . . . . .	5-7
Configuring Printer Monitoring . . . . .	5-8
Checking Printer Status from Windows . . . . .	5-10
Setting Monitoring Preferences . . . . .	5-11

## 6 Maintaining and Transporting the Printer

Running a Nozzle Check . . . . .	6-1
Running a Cleaning Cycle . . . . .	6-2
Aligning the Print Head . . . . .	6-3
Running the Print Head Alignment Utility . . . . .	6-3
Aligning the Print Head from the Control Panel . . . . .	6-5
Replacing Ink Cartridges . . . . .	6-7
Replacing the Paper Cutter Blade . . . . .	6-9
Removing the Used Cutter Blade . . . . .	6-9
Installing the New Cutter Blade . . . . .	6-11
Running the Speed and Progress Utility for Improved Windows Printing . . . . .	6-12
Cleaning the Printer . . . . .	6-14
Transporting the Printer . . . . .	6-15
Setting Up the Printer After Transporting It . . . . .	6-17
Moving the Printer on the Stand . . . . .	6-17
Replacing the Waste Ink System . . . . .	6-18

## 7 Resolving Problems

Diagnosing Problems . . . . .	7-1
Using Hex Dump Mode . . . . .	7-2
Improving Print Quality . . . . .	7-2
Solving Operational Problems . . . . .	7-5
Solving Miscellaneous Printing Problems . . . . .	7-7

Solving Paper Problems	7-9
Solving Roll Paper Ejection Problems	7-10
Clearing Paper Jams	7-11
Solving Windows USB Problems	7-13
Checking Your USB Driver Installation	7-13
Solving USB Cable Problems	7-15

## 8 Specifications

Printing	8-1
Paper	8-2
Printable Area	8-3
Environmental	8-3
Mechanical	8-3
Electrical	8-4
Initialization	8-4
Safety Approvals	8-4
Ink Cartridges	8-5
Parallel Interface	8-6
Forward Channel	8-6
Reverse Channel	8-6
ECP Mode	8-6
USB Interface	8-7

## A Configuring the Printer

Selecting the Printer's Interface	A-2
Configuring the Parallel Interface	A-3
Changing the Printer's Code Page Setting	A-3
Setting the Control Panel Language	A-4
Restoring Default Settings	A-4

## Index

## Introduction

The EPSON Stylus® Pro 7000 is a 24-inch wide color ink jet printer that produces resolutions up to 1440 dpi. You get true photographic quality with no-compromise text and line art for almost any application, without sacrificing productivity. Support for 24-inch media rolls up to 0.5 mm thick and cut sheets up to 1.5 mm thick lets you print on a variety of media.

EPSON's Micro Piezo™ dual density droplet (DX3™) print technology includes a precise and consistent dot size and an innovative six-color, quick-drying ink system. The DC-based motor technology allows for superior print engine accuracy, even during bidirectional printing modes.

For network productivity, a 10/100 Ethernet card or a high performance EFI® Fiery® X2 RIP server may be purchased. The EPSON RS-5100 server supports a variety of network configurations and protocols, with full compatibility for Macintosh®, Microsoft® Windows® 98, Windows 95, Windows NT®, Windows 2000, and UNIX® computers. The Fiery X2 RIP provides full multitasking for simultaneous spooling, Adobe® PostScript® 3 processing, and printing.

The EPSON Stylus Pro 7000, with the RS-5100 and EFI's ColorWise® ProTools, provide professional color management—including fully adjustable CMYK and RGB color correction, ICC profile support, and high-quality press simulation color rendering dictionaries (CRDs).

For complete flexibility, the EPSON Stylus Pro 7000 also supports many third-party RIPs and comes with EPSON® drivers and utilities for photographs and other standard, non-PostScript printing.

## How To Use Your Manuals

This guide is part of a set, which also includes the documentation listed below.

- The EPSON Stylus Pro 7000 *Assembly and Setup Instructions* describe how to unpack and assemble the printer, install ink cartridges and paper, and prepare for printing.
- The EPSON Stylus Pro 7000 *Quick Reference Guide* provides a handy summary of the procedures for daily use and printer maintenance—loading paper, replacing ink cartridges, running cleaning cycles, and aligning the print head. Attach it to your printer for easy reference.
- The electronic *Reference Guide* on the EPSON printer driver CD-ROM provides additional information about the printer, drivers, and utility software. You can read the guide using a Web browser, such as Netscape® Navigator® or Microsoft Internet Explorer, versions 3.0 or later.

If you have the RS-5100, your documentation set includes additional manuals for users and system administrators.

- The RIP Station 5100 *Getting Started* describes how to unpack the RIP, install user software and printer files from the User Software CD-ROM, and set up printing. It also describes how to install printer files via the Internet.
- The RIP Station 5100 *User Guide* describes how to set printing options and print to the RIP from Windows and Mac® OS computers.
- The RIP Station 5100 *Administrator Guide* explains basic configuration and administration of the RIP for the supported platforms and network environments. It also includes guidelines for setting up UNIX, Windows NT, and NetWare® servers to provide PostScript printing services to clients.
- The RIP Station 5100 *Color Printing Guide* provides an introduction to the basics of color theory. It includes practical color printing tips and application-specific instructions.
- Release Notes provide last-minute product information and workarounds for some of the problems you may encounter.

## Using This *Printer Guide*

This guide contains the following information:

**Chapter 1** explains how to install an interface card in the printer, how to connect the printer, and how to install the EPSON drivers.

**Chapter 2** gives instructions for loading roll paper and cut sheets, printing on both EPSON and non-EPSON media, and setting paper configurations.

**Chapter 3** explains how to use the EPSON printer drivers and utilities for Macintosh computers.

**Chapter 4** explains how to use EPSON printer drivers and utilities for Windows computers.

**Chapter 5** describes how to monitor the printer's status and respond to error messages on the control panel.

**Chapter 6** gives instructions for cleaning and aligning the print head, replacing ink cartridges and the cutter blade, and cleaning and transporting the printer.

**Chapter 7** provides troubleshooting tips and solutions for problems involving print quality, printer operation, and paper handling.

**Chapter 8** provides the technical details on your printer, paper requirements, and ink cartridges.

The **Appendix** gives instructions for configuring the printer.

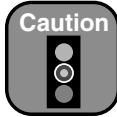
An **Index** is included at the end of the book.

## Warnings, Cautions, Notes, and Tips

You'll find this information throughout this guide:



**Warnings** must be followed carefully to avoid bodily injury.



**Cautions** must be observed to avoid damage to your equipment.



**Notes** contain important information about your printer.



**Tips** provide additional suggestions.

## Where To Get Help

EPSON provides telephone support and information on the installation, configuration, and operation of professional graphics products through the EPSON Preferred<sup>SM</sup> Protection Plan. Dial **(888) 377-6611**, 6 A.M. to 8 P.M., Pacific Time, Monday through Friday, and 7 A.M. to 4 P.M., Pacific Time, Saturday.

**Before you call**, make sure you have your Unit ID number, which is included with the EPSON Preferred Protection Plan information that came with your printer. You'll also need your printer serial number and proof of purchase.

EPSON also provides technical assistance 24 hours a day through the electronic support services and automated telephone services listed in the following table:

Service	Access
World Wide Web	From the Internet, you can reach EPSON's Professional Graphics Home Page at <a href="http://prographics.epson.com">http://prographics.epson.com</a> .
EPSON Internet FTP Site	If you have Internet FTP capability, use your Web browser (or other software for FTP downloading) to log onto <a href="ftp.epson.com">ftp.epson.com</a> with the user name <b>anonymous</b> and your <b>e-mail address</b> as the <b>password</b> .
EPSON E-Mail Technical Support	To receive technical advice through e-mail, go to <a href="http://support.epson.com">http://support.epson.com</a> and complete the form under the troubleshooting tab, as requested.

You can purchase ink cartridges, paper, manuals, and accessories from EPSON Accessories at **(800) 873-7766**. Or visit our web site at: [www.epsonsupplies.com](http://www.epsonsupplies.com) (U.S. sales only). In Canada, please call **(800) 873-7766** for dealer referral.



## ENERGY STAR Compliance

As an ENERGY STAR Partner, EPSON has determined that this product meets the ENERGY STAR guidelines for energy efficiency.

The EPA ENERGY STAR Office Equipment program is a voluntary partnership with the computer and office equipment industry to promote the introduction of energy-efficient personal computers, monitors, printers, fax machines, and copiers in an effort to reduce air pollution caused by power generation.



Always turn the printer off using the **Power** button. When you press this button, the **Operate** light flashes briefly then goes out. Do not unplug the printer or turn off the power to the printer until the **Power** light is off. This ensures that the print head is safely capped.

## Important Safety Instructions

Before using your printer or RIP Station 5100, read the following safety instructions to make sure you use the equipment safely and effectively.

- Turn off and unplug the printer (and RIP Station 5100) before cleaning. Clean with a damp cloth only. Do not spill liquid on the printer (or RIP Station 5100).
  - Do not place the printer (or RIP Station 5100) on an unstable surface or near a radiator, heating vent, or in direct sunlight. Avoid areas subject to rapid changes in temperature and humidity or shock and vibrations.
  - Do not place the printer near a window or in direct sunlight. Bright light can interfere with the paper sensors, causing paper jams and related problems.
  - Keep the entire system away from potential sources of electromagnetic interference, such as loudspeakers or the base units of cordless telephones.
  - Place the printer (and RIP Station 5100) on a flat surface. They will not operate properly if they are tilted or at an angle.
  - Do not block or cover the openings in the printer case (or RIP Station 5100 case) or insert objects through the slots.
  - Use only the type of power source indicated on the label.
  - Connect all equipment to properly grounded power outlets. Avoid using outlets on the same circuit as photocopiers or air control systems that regularly switch on and off. Do not use outlets controlled by wall switches or automatic timers.
  - Place the printer (and RIP Station 5100) near a wall outlet where the plugs can be easily unplugged.
- Placez l'imprimante près d'une prise de contacte où la fiche peut être débranchée facilement.*
- Do not let the power cords become damaged or frayed.

- If you use an extension cord with the printer, make sure the total ampere rating of the devices plugged into the extension cord does not exceed the cord's ampere rating. Also, make sure the total ampere rating of all devices plugged into the wall outlet does not exceed the wall outlet's ampere rating.
- Except as specifically explained in the documentation, do not attempt to service the printer (or RIP Station 5100) yourself.
- Power down the printer from the control panel, unplug the printer (or RIP Station 5100), and refer servicing to qualified service personnel under the following conditions:

If the power cord or plug is damaged; if liquid has entered the printer (or RIP Station 5100); if the equipment has been dropped or the case damaged; if the printer (or RIP Station 5100) does not operate normally or exhibits a distinct change in performance. Adjust only those controls that are covered by the operating instructions.

## **Ink Cartridge Safety Instructions**

- Do not put your hand inside the printer or touch the cartridges during printing.
- To avoid damaging the printer, do not move the print head by hand.
- Under normal circumstances, ink will not come out of the cartridge. If it does get on your skin, wash it off with soap and water. If it gets in your eyes, flush them immediately with water.
- Keep ink cartridges out of the reach of children and do not drink the ink.
- Do not dismantle the ink cartridges or try to refill them. This could result in damage to the print head.
- Once you install an ink cartridge, do not remove the cartridge except to replace it with a new one.
- Install the ink cartridge immediately after you remove it from its package. Leaving the cartridge unpacked for a long time before use may result in reduced print quality.
- Do not use an ink cartridge beyond the date printed on the cartridge package. For best results, use cartridges within six months of installation.

- Do not shake an ink cartridge; this can cause leakage.
- Before transporting the printer, remove the ink cartridges, drain the ink lines, and install the carriage restraint (packing material) See Chapter 6 for complete instructions.

# Chapter 1: Connecting Your Printer and Installing Drivers

Once your printer is set up, you're ready to connect it to your individual computer or network and install the drivers. If you have the RIP Station 5100, you need to connect the printer to the RIP and install the RIP software. See the RIP Station 5100 *Getting Started* for instructions.

For non-PostScript printing using the EPSON driver, you can install the EpsonNet Internal Print Server and connect the printer to your network, or use one of the built-in interfaces to connect to an individual computer. You can also install the EPSON FireWire® interface card for fast connection, if your system supports it. If you connect the printer directly to a networked computer, you can use the Macintosh or Windows printer sharing feature to allow printing over your network.

This chapter provides instructions for the following:

- Installing the EpsonNet Internal Print Server or FireWire interface card
- Connecting to the USB interface
- Connecting to the parallel interface
- Installing the software and setting up printer sharing on a Macintosh
- Installing the software and setting up printer sharing in Windows



You can't use both the USB and Parallel interfaces at the same time.

## Installing the EpsonNet Internal Print Server or FireWire Interface Card

For additional connectivity without a RIP, you can install one of the following cards in your printer:

- EpsonNet Internal Print Server (10 Base T/100 Base TX)—C823632A
- EPSON FireWire Interface Card (Type B IEEE 1394)—C823722

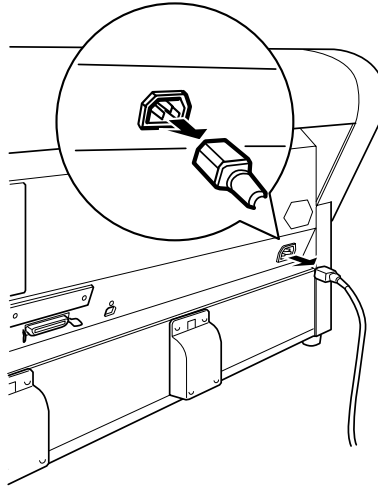
## 1-2 | Connecting Your Printer and Installing Drivers

Before you install the card, see the documentation that came with it for setup information. Then follow these steps:

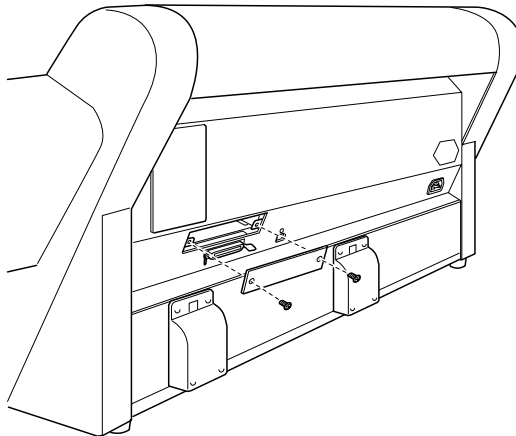


To prevent electric shock and avoid damaging the printer, do not install an interface card when the printer is turned on or connected to an electrical outlet.

1. Make sure the printer is turned off and the power cord is unplugged.



2. Use a Phillips-head screwdriver to remove the two screws securing the shield plate to the optional interface slot. Then lift off the plate.

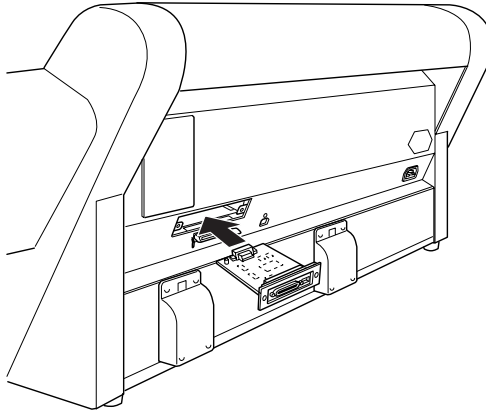


Be sure to keep the screws so you can use them if you re-install the shield plate.

3. Make sure you set any jumpers or DIP switches on the card. See the card's documentation for details.

On the FireWire card, make sure DIP switch 10 is set to **ON** (advanced mode).

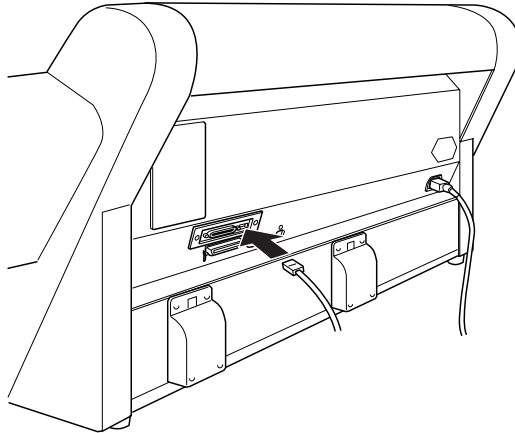
4. Slide the interface card along the slots on both sides of the compartment. Push it in firmly to fully insert the connector into the printer's internal socket.



5. Secure the interface card in the slot with the two screws included with the card.
6. Make sure the printer has been turned off using the **Power** button. Then plug in the power cord.
7. To initialize the EpsonNet Internal Print Server, turn on the printer while holding down the status sheet button on the card for about 5 seconds.

## 1-4 | Connecting Your Printer and Installing Drivers

8. Connect the appropriate cable to the card and to your network hub or computer.



To remove an interface card, turn off the printer, unplug the power cord, and follow the steps in reverse order.

Before you can use the EpsonNet Internal Print Server, you must configure it for your network protocols and operating system. See the *EpsonNet Internal Print Server Administrator's Manual* for instructions.

Before you can print, you must install the printer software, as described on page 1-7 (Macintosh) or page 1-10 (Windows).

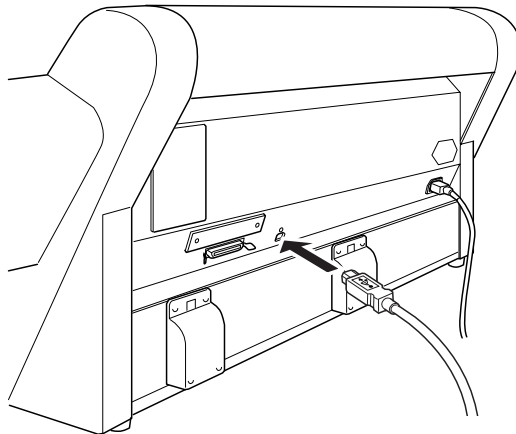
## Connecting to the USB Interface

You'll need a shielded USB "AB" interface cable, not more than 6.5 feet long. Your computer system must be equipped with a USB port.

Windows systems must have a "clean" installation of Windows 98 or Windows 2000 (not installed over Windows 95).

Follow these steps to use the printer's built-in USB interface:

1. Connect one end of the interface cable to the USB port on the back of the printer.



If you use a USB hub, connect the printer to a first tier hub. If the printer doesn't work with the hub, connect it directly to the USB port on your computer.

2. Connect the other end of the interface cable to the computer's USB port.

You can't use both the parallel and USB interfaces at the same time. When you use the USB interface, make sure the printer's parallel interface is set to compatible (the default setting). See the Appendix for more information.

You must install the printer software before using the printer. See page 1-7 for Macintosh instructions or page 1-10 for Windows.

## Connecting to the Parallel Interface

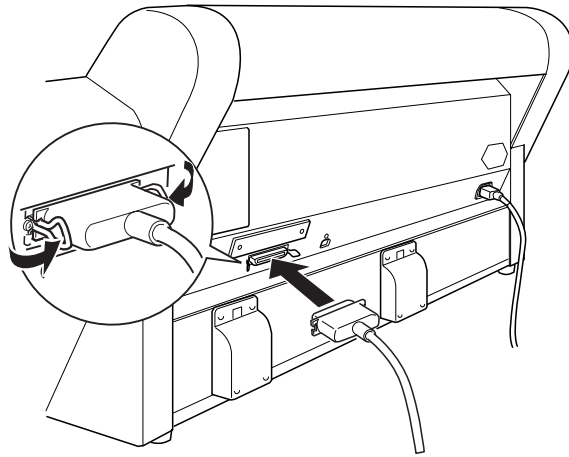
You'll need a high-speed, high-quality, bidirectional, IEEE-1284 parallel cable, not more than 6 feet long. Follow these steps to connect a Windows system to the printer's built-in parallel interface:

1. Make sure both the printer and computer are turned off.
2. Plug the cable connector securely into the printer's interface. Then squeeze the wire clips together until they lock into place on both sides.



### Note

You can't use both the USB and Parallel interfaces at the same time.



3. Plug the other end of the cable into the computer's parallel port.

See page 1-10 for instructions on installing the printer software. You must install the software before using the printer.

## Installing the Software and Setting Up Printer Sharing on a Macintosh

You need to install the drivers and utilities on any Macintosh that will print to the EPSON Stylus Pro 7000. Make sure each Macintosh meets the minimum system requirements. Then follow the procedure for installing the software. Depending on your network configuration, you may also want to set up printer sharing.

### Checking System Requirements

The memory requirements listed in the following table are for printing a 23 × 33-inch full-page color image. Requirements may vary, depending on the size, complexity, and resolution of your images.

#### *System requirements*

Component	Minimum	Recommended
Processor	PowerPC	300 MHz G3 or higher processor
OS	System 8.5.1	System 9 recommended for best USB support
Available memory	14MB (foreground printing) 23MB (background printing)	128MB (total)
Hard drive space	10MB free for installing the software	2GB recommended
CD-ROM	Double-speed CD-ROM drive	Quad-speed or faster

### Installing the Software

Before you start, turn off all virus protection programs. See your anti-virus software documentation for instructions. Then follow these steps to install the printer software:

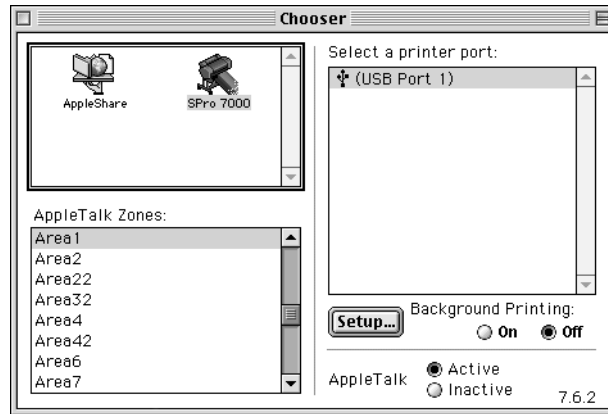
1. Insert the printer software CD-ROM.
2. Open the **Installer** folder and double-click the icon. Then follow the instructions on the screen.
3. When you see the “installation complete” message, click **Restart**.
4. After you restart, make sure you open the Chooser and select the printer.

## Setting Up Printer Sharing

If you want to share the printer, you first need to set it up as a shared printer on the Macintosh to which it is connected. Then, you must specify the network path to the printer from each Macintosh that will use it, and install the printer software on those Macintosh systems.

Follow these steps to share a printer connected directly to a Macintosh with other systems on an AppleTalk® network.

1. Turn on the printer.
2. Open the Chooser and click the printer's icon. Then select the port to which the printer is connected.

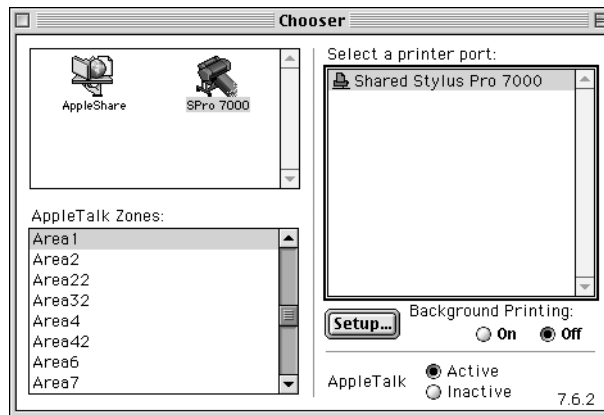


3. Click the **Setup** button. You see the following dialog box:



4. Check **Share this Printer**, then type the printer name and password information as needed.

5. Click **OK**. The name of the shared printer appears in the port list in the Chooser.
6. Close the Chooser.
7. On each computer from which you want to access the printer, open the Chooser, click the printer's icon, and select the printer port. You can only select from the printers connected to your current AppleTalk zone.



8. If you see a message requesting a password, enter the password for the printer, then click **OK**.
9. Select the appropriate Background Printing option, then close the Chooser.

## Installing the Software and Setting Up Printer Sharing in Windows

Make sure all computers meet the minimum system requirements. Then follow the procedures for installing the software and checking the installation. Depending on your network configuration, you may also want to set up printer sharing. Instructions are provided for both Windows 95/98 and Windows NT.

### Checking System Requirements

The memory requirements listed in the following table are for printing a 23 × 33-inch full-page color image. Requirements may vary, depending on the size, complexity, and resolution of your images.

#### *System requirements*

Component	Minimum	Recommended
Processor	i486/25 MHz for Windows 95 and NT 4.0 i486/66 MHz for Windows 98 and 2000	Pentium® II 300 MHz or higher
OS	Windows 95, 98, 2000, or Windows NT 4.0	
Available memory	16MB RAM	128MB RAM or more
Hard disk space	40MB free for installing the software	For printing a file, space equivalent to double the file size
Monitor	VGA	Super VGA or better
CD-ROM	Double-speed CD-ROM drive	Quad-speed or faster

### Installing the Software

Make sure any virus protection programs are turned off before you begin. Then follow these steps to install your printer software:

1. Make sure the printer is connected and turned off, then turn on your computer.
2. Insert your printer software CD-ROM.

The installer starts automatically:



### Note

If the New Hardware Found screen or any other wizard appears, click **Cancel** and follow the steps given here. If the Digital Signature Not found screen appears (in Windows 2000), click **Yes**.



If it doesn't start, double-click **My Computer**. Then double-click your CD-ROM icon.

3. Double-click **Install Printer Driver/Utility**. Then follow the instructions on the screen.
4. If you're using Windows 95 or Windows NT, continue with step 5.

If you're using Windows 98 or Windows 2000, follow the on-screen instructions to turn on your printer. The printer port configuration starts automatically. If you're using the USB interface, the USB device driver installation starts automatically.

If you see an error message, your drivers may not be installed correctly. For more information, see Chapter 7 in this guide or "Troubleshooting" in the electronic *Reference Guide* on your printer software CD-ROM.

5. When you see the "installation complete" message, click **OK**.

## Checking USB Installation (Windows 98)

If you're using a USB connection, it's a good idea to confirm that the driver is set up correctly after you install it. Follow these steps:

1. Click **Start**, point to **Settings**, and click **Printers**. Make sure your EPSON Stylus Pro 7000 icon appears in the Printers window.
2. Right-click the icon, then click **Properties**.
3. Click the **Details** tab and note what is displayed under **Print to the following port**.

You should see EPUSBx: (EPSON Stylus Pro 7000). If you don't see the correct port displayed, see Chapter 7 in this guide or "Troubleshooting" in the electronic *Reference Guide* on your printer software CD-ROM.

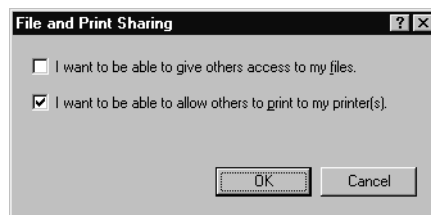
## Setting Up Printer Sharing in Windows 95 and 98

First, you need to set up the printer as a shared printer on the computer to which it is connected. Then, you must specify the network path to the printer from each computer that will use it.

### *Setting up the printer as a shared printer*

Follow these steps to share a printer that is connected directly to your computer with other computers on a network.

1. Click **Start**, point to **Settings**, then click **Control Panel**.
2. Double-click **Network**.
3. Click the **File and Print Sharing** button. You see the following:



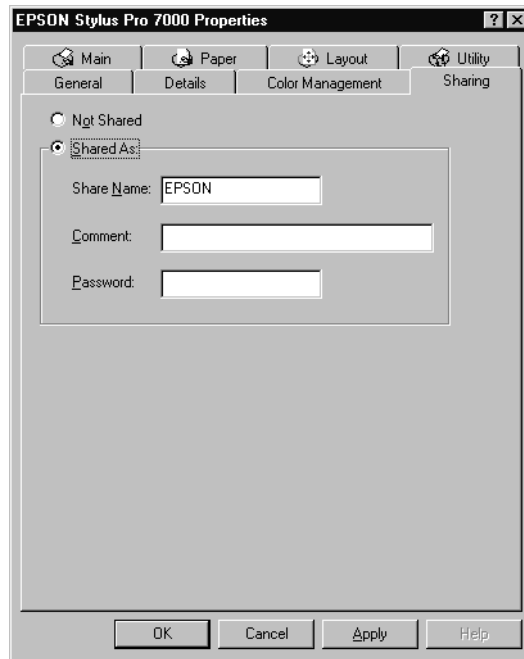
4. Select I want to be able to allow others to print to my printer(s) and click OK.

5. In the Network window, click OK.

6. In the Control Panel, double-click Printers.

If you see a message requesting the Windows 95 or 98 CD-ROM, insert the CD-ROM and follow the messages on the screen. Restart your computer if requested. Then open the Printers folder, and continue from step 7.

7. Select your printer, and choose **Sharing** from the File menu. You see the following:

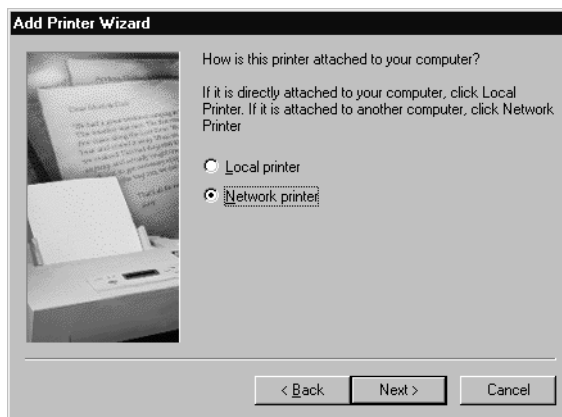


8. Select **Shared As**, enter the printer information as needed, then click OK.

*Accessing the printer through a network*

To access the printer from another computer on your network, follow these steps.

1. On the computer from which you want to access the printer, click **Start**, point to **Settings**, and click **Printers**.
2. Double-click the **Add Printer** icon. You see the Add Printer Wizard.
3. Click **Next**. You see a window like the following:



4. Click **Network printer**, then click **Next**.
5. Click **Browse**. You see a window like the following:



6. Double-click the icon of the computer that is directly connected to the printer. Then click the printer's icon.
7. Click OK and follow the messages on the screen.

## Setting Up Printer Sharing in Windows NT 4.0

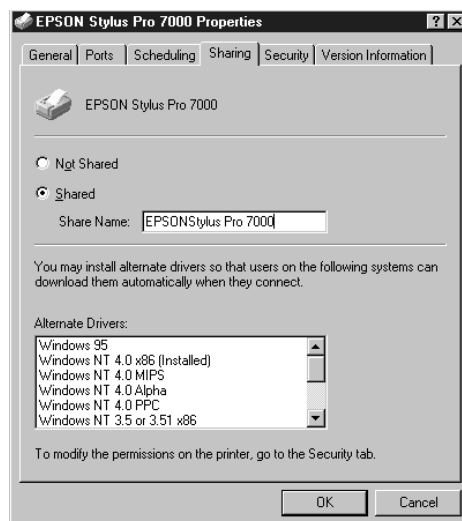
These instructions apply to small network users only. If you are on a large network and would like to share your printer, consult your network administrator.

First, you need to set up the printer as a shared printer on the computer to which it is connected. Then, you must specify the network path to the printer from each computer that will use it, and install the printer software on those computers.

### *Setting up your printer as a shared printer*

Follow these steps to share a printer that is connected directly to your computer with others on a network.

1. Click **Start**, point to **Settings**, and click **Printers**.
2. Select your printer, then click **Sharing** on the File menu. You see a window like the following:

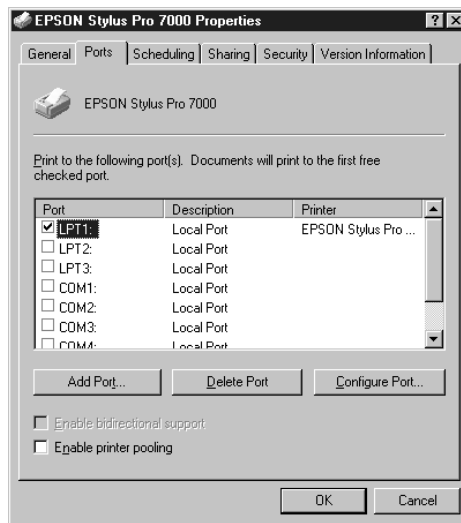


3. Click **Shared** and enter the Share Name. Do not choose any drivers from the Alternate Drivers list. Then click **OK**.

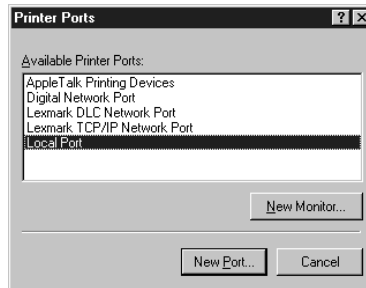
*Accessing the printer through a network*

To access the printer from another computer on your network, follow these steps.

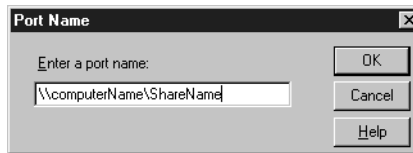
1. Install the printer driver on the client computer from the software CD-ROM.
2. Open the Printer folder from the Control Panel, right-click your printer's icon, then click **Properties**.
3. Click the **Ports** tab to display the following window:



4. Click **Add Port**. You see the Printer Ports dialog box:



5. Select **Local Port**, then click **New Port**. You see the Port Name dialog box:



6. In the text box, type the following information:

*\\name of computer that is connected to the printer\name of the shared printer*

Then click **OK**.

7. Click **Close** to return to the Ports list.
8. Make sure the new port is added and the check box is selected. Then click **OK**.



## Chapter 2: Handling Paper

The EPSON Stylus Pro 7000 prints on a variety of media, including roll paper and cut sheets up to 24 inches wide. The straight-through paper path allows you to use heavy stock, including media up to 1.5 mm thick.

This chapter provides instructions for the following:

- Selecting paper and other media
- Printing on EPSON paper and film
- Using roll paper
- Using cut sheet paper
- Using the paper hammock with the printer stand
- Setting paper configurations

### Selecting Paper and Other Media

You can print on most types of coated, glossy, plain paper, and other media. You can also purchase an optional 3-inch spindle, which allows you to use roll paper with a 3-inch core.

The following table shows the requirements for paper you can use in your printer:

#### *Paper requirements*

	<b>Roll paper</b>	<b>Cut sheets</b>
Size	8.27 to 24 in. wide (210 to 610 mm)	8.5 × 11 in. to 24 × 36 in. (up to 610 × 914 mm)
Maximum roll diameter	5.90 in. (150 mm)	
Thickness	0.08 to 0.5 mm	0.08 to 1.5 mm

Always test samples of paper stock in the printer before purchasing large quantities or printing large jobs. When you use non-EPSON papers or other media, you may need to “profile” their thickness and ink drying time. See page 2-21 for instructions.

## Printing on EPSON Paper and Film

EPSON papers, which are specially formulated for EPSON ink, ensure high-quality results. The name on the package may be different from the name shown in the table; use the product code to identify the paper or other media.

### *EPSON Stylus Pro 7000 cut sheet product codes*

Sizes	Photo Quality Ink Jet Paper	Photo Paper	Photo Quality Glossy Film	Poster Board – Semi-Gloss
A4 (8.25 × 11.7 in.)	S041061 S041026	S041140	S041071	—
Letter (8.5 × 11 in.)	S041062 S041029	S041141	S041072	—
B (11 × 17 in.)	S041070 S041044	S041156	S041075	—
A3 (11.7 × 16.5 in.)	S041068 S041045	S041142	S041073	—
Super A3/B (13 × 19 in.)	S041069 S041043	S041143	S041074	—
A2 (16.5 × 23.4 in.)	S041079	—	—	—
C (17 × 22 in.)	S041171	—	—	—
B2 (20.25 × 28.7 in.)	—	—	—	S041237



Check the EPSON Web site (<http://prographics.epson.com>) or your authorized EPSON dealer for new papers and other media that may be available.

### *EPSON Stylus Pro 7000 roll media product codes*

Paper type	Product code (24-inch rolls)
Presentation Matte Paper	S041295
Glossy Paper - Heavyweight	S041291
Semi-gloss Paper - Heavyweight	S041292
Photo Glossy Paper	SP91021
Backlight Film	SP91023

## Printing Tips for EPSON Media

Follow these tips for using and storing printing materials:

- Avoid touching the printable surface of the paper or other media with bare hands. Fingerprints may affect print quality. Handle media by the edges or use cotton gloves.
- Always choose the correct print mode setting in your print options before you send your job.
- Always select the correct paper source (roll or sheet) from the printer's control panel.
- Keep unused media in its original packaging and store it in a cool, dry place to avoid a decline in quality. Avoid storing media or printouts where they will be exposed to high temperature, humidity, or direct sunlight.

## Using Roll Paper

You can use any roll paper with a 2-inch core, up to 24 inches wide. With the optional 3-inch spindle, you can also use roll paper that has a 3-inch core. Switching paper rolls is a simple process.

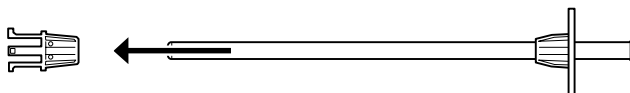
This section covers the following:

- Attaching and removing paper from the spindle
- Inserting the spindle in the printer
- Loading the paper for printing

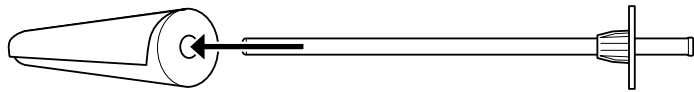
## Attaching Paper to the Spindle

Follow these steps:

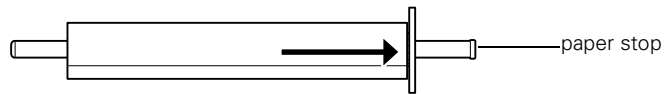
1. Open the roll paper cover and lift out the spindle.
2. Slide the movable paper stop (flange) off the left end of the spindle.



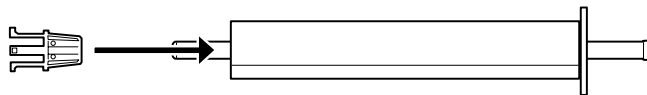
3. Position the roll so the paper unwinds as shown:



4. Slide the roll onto the spindle so it fits securely over the paper stop.



5. Slide the movable paper stop back onto the spindle and insert it firmly into the end of the roll.



## Removing Paper from the Spindle

When you need to change paper, follow these steps to remove the paper roll from the spindle:

1. Open the roll paper cover and lift out the roll and spindle.

If the paper is loaded for printing, first lower the paper set lever and roll up the paper before you remove the spindle.

2. Lay the roll down on a flat surface.
3. Loosen the movable paper stop by tapping it with your hand.
4. Slide the paper stop off the end of the spindle.
5. Remove the roll from the spindle.



6. Attach the new paper roll to the spindle.



To avoid damage, do not tap the end of the spindle on the floor.

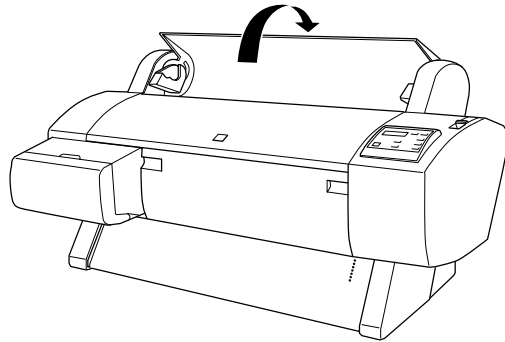


Store unused roll paper in its original package—including the bag, end caps, and box—to protect the paper.

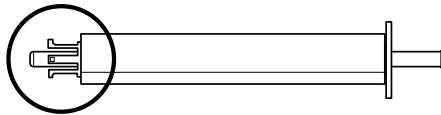
## Inserting the Spindle in the Printer

After you have loaded the paper roll onto the spindle, you need to insert it into the printer, following these steps:

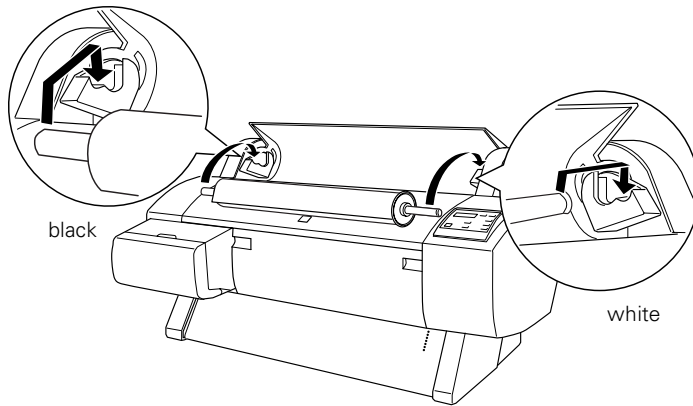
1. Open the roll paper cover.



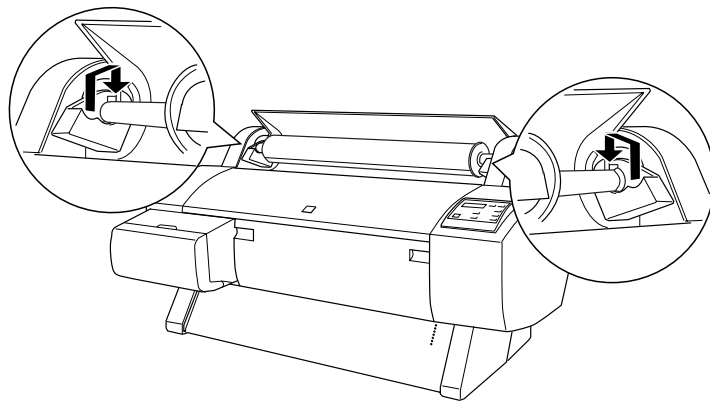
2. Make sure the movable paper stop is firmly fixed into the left end of the paper roll.



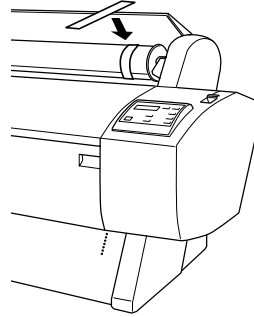
3. Position the spindle so that the white end (with the fixed paper stop) is on the right. Rest the spindle on the groove on top of the printer if necessary.



4. Lift the spindle and place it on the mounting brackets inside the printer.



- To keep the paper wound when you're not printing, use the roll paper belt included with your printer.



- See the next section to load the paper for printing.

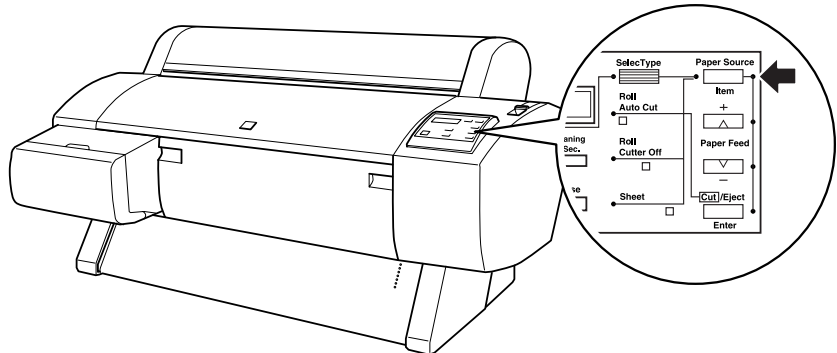
### Loading Roll Paper for Printing

Once the roll paper is attached to the spindle and inserted in the printer, you're ready to load it for printing. Follow these steps:



To avoid feeding excess paper through the printer, make sure you don't select **Sheet** when you're using roll paper.

- Make sure the printer is turned on. Then press the **Paper Source** button until one of the **Roll** lights comes on.





If you're using thick roll paper, choose **Roll Cutter Off**. Paper that is too thick may damage the cutter.

- Choose **Roll Auto Cut** if you want the paper to be cut automatically after each page is printed.
- Choose **Roll Cutter Off** if you don't want the paper cut automatically.

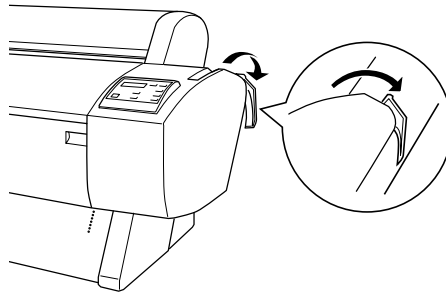
If you're using the Auto Cut setting, you can have a trim line printed on the right edge of your images or pages. If you're not using auto cut, you can have the line printed on the right and bottom edges of your pages. See page 2-12 for instructions.

You can also select roll paper settings through your print options, which will override the control panel settings. See page 3-2 or 4-6 in this manual or the RIP Station 5100 *User Guide* for more information.

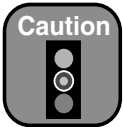
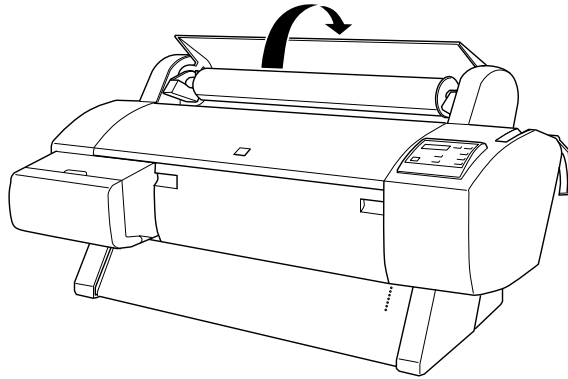


To avoid damaging the printer, never move the paper set lever while the **Operate** or **Pause** light is flashing.

2. Make sure the **Operate** light and **Pause** light are not flashing. Then push the paper set lever all the way down.

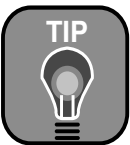
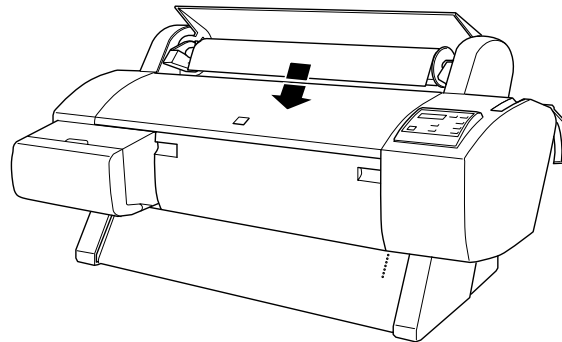


3. If the roll paper cover is closed, open it.



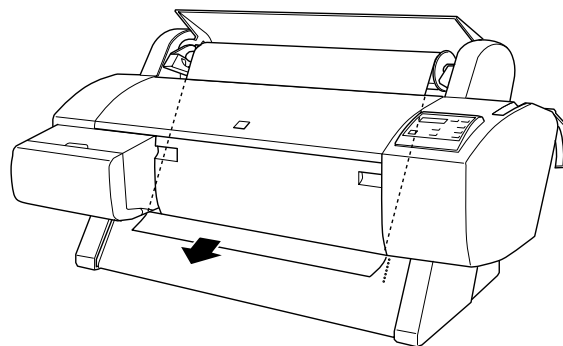
Avoid touching the printable surface of the paper with bare hands. Fingerprints may affect print quality.

4. Feed the paper into the paper slot.

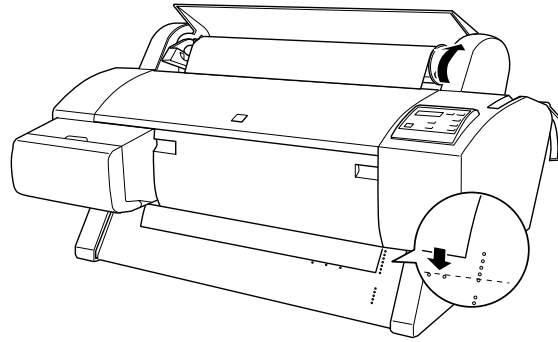


If the bottom edge of the paper doesn't come out, open the lower cover and pull the paper through.

5. Pull the paper down so it extends all the way through the slot.

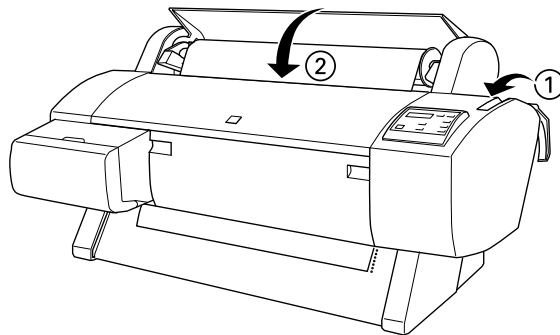


6. Holding the bottom edge of the paper, turn the roll back to remove the slack. Then align the paper with the two rows of holes.



To avoid damaging the printer, never move the paper set lever while the **Operate** or **Pause** light is flashing.

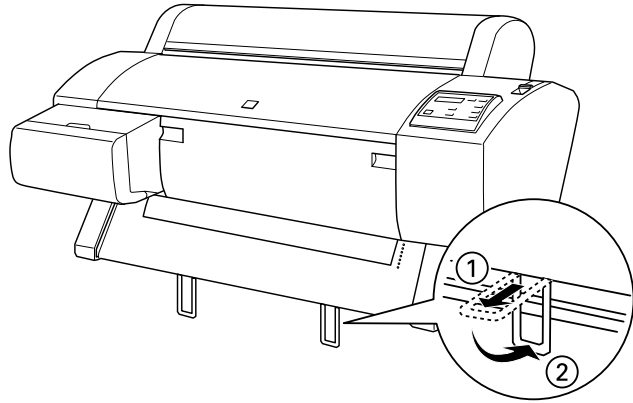
7. Pull the paper set lever all the way up, then close the roll paper cover. **PRESS PAUSE BUTTON** appears on the control panel display.



If you're using Auto Cut and the edge of the paper is uneven, press **Cut/Eject** to recut the edge.

8. Press the **Pause** button. The print head moves and the paper feeds into printing position automatically. **READY** appears on the control panel display. (Even if you don't press **Pause**, the paper and printer will move into printing position automatically after 10 seconds.)

9. To help paper feed out of the printer, pull out the two paper guides at the bottom of the printer.



You can now send your print job.

### **Cutting Roll Paper Manually**

When you're not using the Auto Cut setting, you need to cut the paper manually after your print job is finished. Follow these steps:

1. If the paper is not positioned correctly, press one of the **Paper Feed** buttons to adjust the paper position. Normally, you don't need to do this after a print job is finished.
2. Press the **Paper Source** button until the **Roll Auto Cut** light comes on.
3. Press the **Cut/Eject** button. The paper is cut.

## Turning Off Trim Lines

Trim lines are printed on the right edge of your images or pages (if you're using Auto Cut) or on the right and bottom edge (if you're not using Auto Cut). You can turn off this feature if you don't want to have trim lines printed. Follow these steps:

1. Press the **SelecType** button. **PRINTER SETTING MENU** appears on the display.
2. Press the **Item** button until **PAGE LINE=ON** appears on the display.
3. Press the **+** button. **PAGE LINE=OFF** appears on the display.
4. Press the **Enter** button to save the new setting.
5. Press the **SelecType** button to exit the Printer Setting menu.

You can also turn off trim lines through your print options. See Chapter 3 or 4 (or the RIP Station 5100 *User Guide*) for more information.

## Setting Default Roll Paper Margins

The default margins for roll paper are .12 inch or 3 mm (left and right) and .59 inch or 15 mm (top and bottom). You can set all margins to 3 mm or 15 mm. However, print quality may be affected near the cut edges if you change the top and bottom margins to 3 mm.

Follow these steps change the margins:

1. Press the **SelecType** button. **PRINTER SETTING MENU** appears on the display.
2. Press the **Item** button repeatedly until **ROLL MARG=T/B15MM\*** appears on the display. This is the default setting.
  - Press the **+** button once to set all margins to 3 mm. **ROLL MARG=3MM** appears on the display.
  - Press the **+** button again to set all margins to 15 mm. **ROLL MARG=15MM** appears on the display.

You can use the **+** or **-** button to cycle through all three settings.

3. When you have selected the setting you want, press the **Enter** button to save it.
4. Press the **SelecType** button to exit the Printer Setting menu.

## Using Cut Sheet Paper

You can print on many types of cut sheet paper and other media. The printer accepts sheets ranging from 8.5 × 11 inches to 24 × 36 inches. You can leave your roll paper in the printer when you print on cut sheets; make sure it is rolled up and fastened with the roll paper belt, as described on page 2-7.

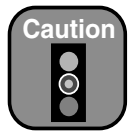
If you're using paper more than 19 inches long or stock more than 0.5 mm thick, see the following sections for additional instructions. You will not be able to follow the "autoload" procedure described in this section.

Before you start, make sure the printer is on and roll paper is not loaded for printing. Then follow these steps:

1. Make sure the roll paper cover is closed.
2. Press the **Paper Source** button repeatedly until the **Sheet** light comes on.
3. Make sure the paper set lever is all the way up.

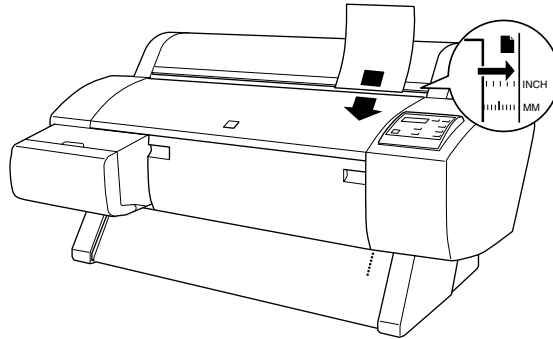


Avoid touching the printable surface of the paper with bare hands. Fingerprints may affect print quality.



To avoid damaging the printer, never move the paper set lever while the **Operate** or **Pause** light is flashing.

4. Feed the sheet into the paper slot until it meets resistance. Make sure the right edge of the paper is straight and aligned with the scale on the roll paper cover. **PRESS PAUSE BUTTON** appears on the control panel display.



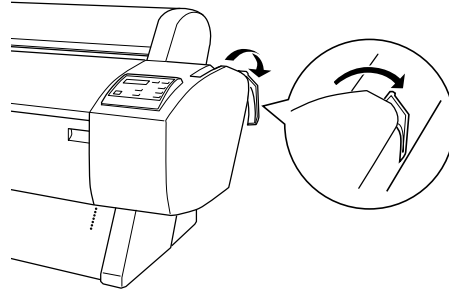
5. Press the **Pause** button. The print head moves and the paper feeds into printing position automatically. **READY** appears on the control panel. (Even if you don't press **Pause**, the paper and printer will move into printing position automatically after 10 seconds.)
6. Print your page. After it is finished, the sheet stays in the printer.
7. To remove your printout, hold the sheet while pressing the **Paper Feed (-)** button.

### Using Cut Sheet Paper Longer Than 19 Inches

Before you start, make sure the printer is on and roll paper is not loaded for printing. Then follow these steps:

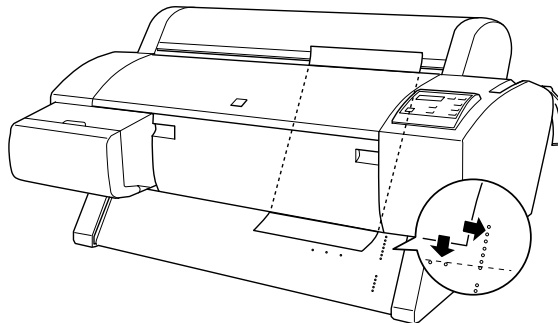
1. Make sure the roll paper cover is closed.
2. Press the **Paper Source** button repeatedly until the **Sheet** light comes on.

3. Make sure the **Operate** light and **Pause** light are not flashing. Then push the paper set lever all the way down.

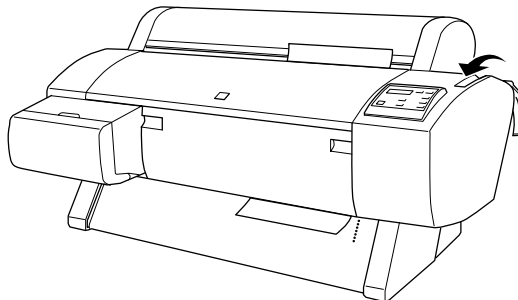


Avoid touching the printable surface of the paper with bare hands. Fingerprints may affect print quality.

4. Feed the sheet into the paper slot until it extends through the slot. Align the paper with the two rows of holes.



5. Pull the paper set lever all the way up. **PRESS PAUSE BUTTON** appears on the control panel display.





To avoid damaging the printer, never move the paper set lever while the **Operate** or **Pause** light is flashing.

6. Press the **Pause** button. The print head moves and the paper feeds into printing position automatically. **READY** appears on the control panel. (Even if you don't press **Pause**, the paper and printer will move into printing position automatically after 10 seconds.)
7. Print your page. After it is finished, the sheet stays in the printer.
8. To remove your printout, hold the sheet while pressing the **Paper Feed (-)** button.

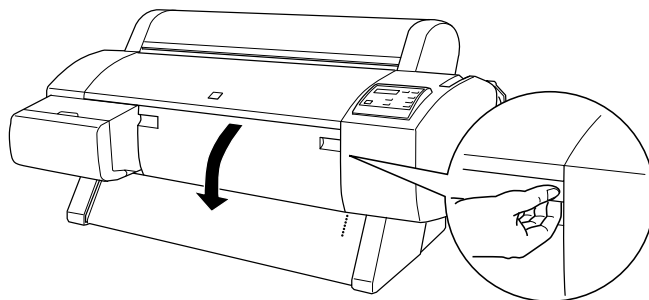


You can't run a cleaning cycle when heavy stock is loaded in the printer.

## Printing on Heavy Stock

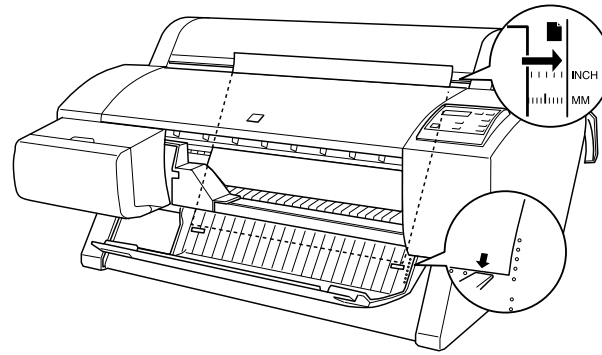
You can print on heavy stock up to B2 size (approximately 20 × 28 inches). Follow these instructions when you print on card stock or other media more than 0.5 mm thick.

1. Pull down the paper hammock to catch your printouts in front of the printer (when you're using the printer stand). Extend the paper guides straight out in front of the printer to keep the stock from bending.
2. Press the **Paper Source** button repeatedly until the **Sheet** light comes on.
3. Make sure the **Operate** light and **Pause** light are not flashing. Then push the paper set lever all the way down.
4. Open the lower cover by pulling down on the handles.

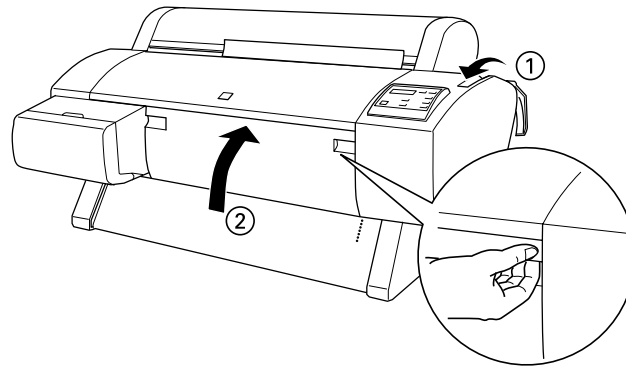


5. Feed the stock into the paper slot until the bottom edge of the stock rests behind the open lower cover.

Make sure the right edge is straight. It should be aligned with the scale on the roll paper cover (at the top) and the two rows of holes (at the bottom).



6. Pull the paper set lever all the way up, then close the lower cover. **PRESS PAUSE BUTTON** appears on the control panel display.



7. Press the **Pause** button. The print head moves and the paper feeds into printing position automatically. **READY** appears on the control panel. (Even if you don't press **Pause**, the paper and printer will move into printing position automatically after 10 seconds.)
8. Print your page. After it is finished, the page stays in the printer.
9. To remove your printout, hold it while pressing the **Paper Feed (-)** button.



To avoid damaging the printer, never move the paper set lever while the **Operate** or **Pause** light is flashing.

## Adjusting the Platen Gap for Heavy Stock

When you print on thick media, you may need to adjust the platen gap setting. Normally, the **AUTO** setting allows the printer to adjust automatically. However, if print quality is not satisfactory when you use heavy stock, change this setting to **WIDE**. Follow these steps:

1. Press the **SelecType** button. **PRINTER SETTING MENU** appears on the display.
2. Press the **Item** button. **PLATEN GAP=AUTO** appears on the display.
3. Press the **+** button. **PLATEN GAP=WIDE** appears on the display.
4. Press the **Enter** button to save the new setting.
5. Press the **SelecType** button to exit the Printer Setting menu.

The letter **W** appears on the right side of the control panel display to remind you of the wide setting. When you switch paper, don't forget to change this setting back to **AUTO**.

## Turning Off Paper Monitoring Features

The printer normally stops and displays an error message if you try to print an image wider than the paper, or if paper is fed at an angle. You can turn off the paper size check and/or paper alignment check if you don't want to use these monitoring features. However, ink may be sprayed on the platen if you print an image that is too wide for the paper. Follow these steps to turn off paper monitoring:

1. Press the **SelecType** button. **PRINTER SETTING MENU** appears on the display.
2. Press the **Item** button repeatedly until **PAPER SIZE CHK=ON** or **PAPER ALIGN CHK=ON** appears on the display.
3. Press the **+** button. **PAPER SIZE CHK=OFF** or **PAPER ALIGN CHK=OFF** appears on the display.
4. Press the **Enter** button to save your new setting.
5. Press the **SelecType** button to exit the Printer Setting menu.

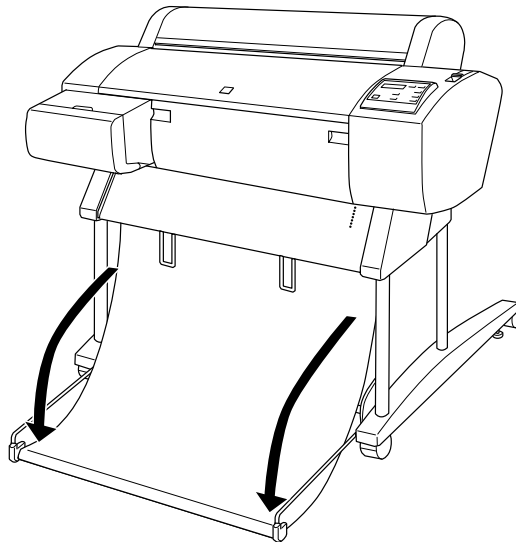
## Using the Paper Hammock with the Printer Stand



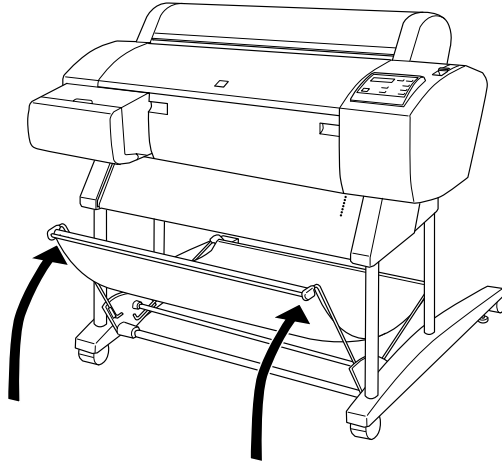
When you print on thick paper, set the hammock to catch printouts in front of the printer.

The paper hammock (also called the paper basket) is a cloth sheet that attaches to the printer stand and catches your printouts as they come out. This keeps the printouts from getting dirty or wrinkled. You can set up the hammock either to catch the paper roll under the printer or let it feed straight out in front of the printer.

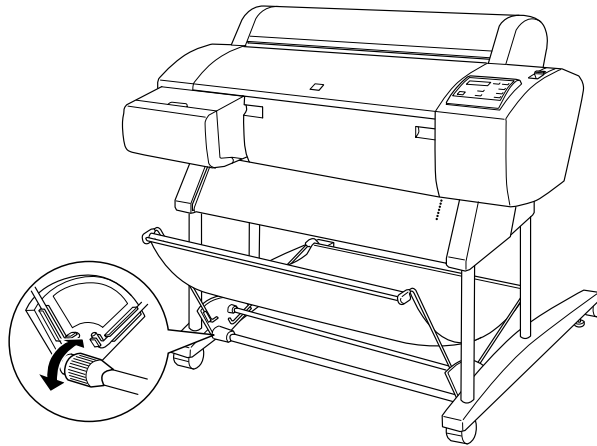
- To catch printouts in front of the printer, pull down the paper hammock rod until it rests on the floor.



- To catch printouts under the printer, lift the hammock rod all the way up.



- If the parts shown below become loose, tighten them by hand.





5. Examine the printed pattern to determine which set of lines is the straightest (shows the smallest gap), and note the corresponding number.

In the sample pattern, the lines under number 4 are the straightest.

6. Press the + or - button to select the number noted in step 5. Then press the **Enter** button.
7. Press the **Item** button. **DRYING TIME=0 MIN** appears on the display. Press the + or - button to select the time in minutes, then press the **Enter** button. Start with one minute. If ink still smears, increase the drying time.

This is how long the printer will pause between pages (or before cutting) to let the ink dry.

8. Press the **Item** button. **SUCTION=NORM\*** appears on the display. If you're registering very thin paper, press the + or - button to select the **LOW** setting. Then press the **Enter** button.
9. Press the **Pause** or **SelecType** button to exit the Paper Configuration menu.

## Selecting Registered Paper Settings

Once you have registered a type of paper or other media, you can select it whenever you print on that paper.

1. Press the **SelecType** button until **PAPER CONFIG. MENU** appears on the display.
2. Press the **Item** button. You see **PAPER NUMBER=1**.
3. Press the + or - button to select the registered number you want to use. Then press the **Enter** button.
4. Press the **Pause** or **SelecType** button to exit the Paper Configuration menu.

When you change media, make sure you select the correct setting.

If you are not sure what media setting is in effect, you can print a status sheet, which shows the current settings. See page 5-4 for instructions.

## Chapter 3: Printing with EPSON Drivers for Macintosh

The EPSON Stylus Pro 7000 comes with drivers that let you use the printer in non-PostScript mode without a RIP and utilities that allow you to manage background printing jobs. ICC profiles for ColorSync® 3.0 are included, so you can use advanced color management features of your applications or the driver itself.

The driver CD-ROM also includes an electronic *Reference Guide* to your printer and EPSON printer software. You can read the guide using a Web browser, such as Netscape Navigator or Microsoft Internet Explorer, versions 3.0 or later.

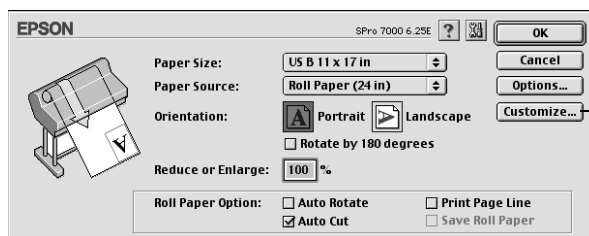
This chapter covers the following information:

- Choosing page setup options
- Choosing basic print options
- Choosing advanced print options
- Managing print jobs

### Choosing Page Setup Options

Many of the Page Setup options correspond to paper handling features that you can also set through the control panel. Software options give you additional settings and override control panel settings. Follow these steps to choose Page Setup options:

1. Choose **Page Setup** from the File menu of your application. You see the Page Setup dialog box:



Click if your paper size is not listed.



#### Note

If you're using roll paper and you choose a paper size that's larger than your image, the image will be centered in the space you selected.

2. From the **Paper Size** list, select your image size (if you're using roll paper) or the size of your sheet. For paper size equivalents in inches, see page 8-2. If your size is not listed, click **Customize**. Then enter the size in hundredths of an inch (or centimeters).

3. Select the type of paper you loaded in the printer from the **Paper Source** list.

If your image is more than 62 inches long, select **Roll Paper (Banner)**. You can also use this setting to print a series of continuous images without any “margin space” between them.

4. When you're using roll paper, set the following options:
  - **Auto Rotate**  
Saves paper if your document length is shorter than the printable width of the paper roll. Your image will be turned automatically by 90 degrees and printed crosswise. This setting is not available for Roll Paper (Banner).
  - **Auto Cut**  
Choose this option if you want the paper to be cut automatically after each page is printed.
  - **Print Page Line**  
Prints trim lines on the right and bottom edges of your pages.
  - **Save Roll Paper**  
Saves paper by not feeding the blank portion of the last page of your document. Applicable in Roll Paper (Banner) mode only.
5. Make the settings you want for **Orientation** and **Reduce or Enlarge**.
6. After making your settings, click **OK**.

## Choosing Basic Print Options



### Note

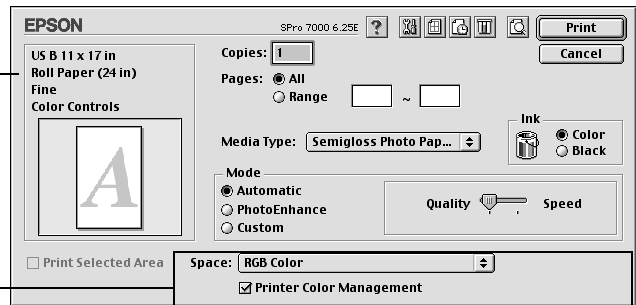
If you need more information about print options, you can click the ? button on any dialog box.

Once you have selected your Page Setup options, you need to set printing options. The EPSON driver offers automatic settings that optimize print quality and speed when you're using EPSON media. You can also choose advanced settings for more control over your printer and color management options. See page 3-6 for instructions on advanced settings. Follow these steps to make basic settings for automatic printer adjustments:

1. Choose **Print** from the File menu of your application. A dialog box like the following appears:

This box shows you the current settings, but you can't change them from here.

These settings appear if you're using Photoshop 5. See page 3-4 for more information.



2. Choose the number of **Copies** and indicate which **Pages** you want to print.
3. Select a **Media Type** setting appropriate for the media you're printing on, as listed in the table on page 3-5.
4. Select **Color** or **Black** ink.
5. Set the **Mode** option as follows:
  - Click **Automatic** to have the printer driver analyze the contents of your image or file and make the appropriate printing adjustments. If a **Quality/Speed** slider appears in the Mode box, set it according to the priorities of your print job. (Depending on the Media Type setting, this slider may not appear.)
  - Click **PhotoEnhance** to choose from a number of settings designed for low-resolution photographs: **Standard**, **People**, **Nature**, **Soft Focus**, and **Sepia**. You can also select **Digital Camera Correction** to correct noise and other flaws common to digital camera images.

- Click **Custom**, then choose one of the print job types from the custom settings list, as described below.



You can also create your own settings and add them to this list. See page 3-8 for more information.






*Custom print job settings*

Setting	Usage
Advanced Photo	Prevents the misprinting of ink dots that may occur because of the movement of the print head and paper. Available only when you choose photo or photo-quality media types.
Text/Graph	Intensifies colors and lightens the midtones and highlights. Best for print jobs with non-photographic images.
ColorSync	Adjusts colors based on your printer's ICC profile, using the perceptual rendering intent.

6. If you're using Photoshop® 5.0.2 or later, you'll see settings for **Space** and **Printer Color Management** in your dialog box.

For standard RGB images, use **RGB Color** for the **Space** setting. Make sure **Printer Color Management** is checked if you're using **ColorSync**. (otherwise, this setting doesn't matter).

For CMYK images, use your printer profile for the **Space** setting and choose **No Color Adjustment** on the **Advanced** window. See page 3-8 for more information.

7. Choose from the following buttons to access additional features:
  - Click  to access the printer monitoring and maintenance utilities. See page 5-7 or Chapter 6 for more information.
  - Click  if you want to reduce your image to fit on the page.
  - Click  to turn on background printing. This lets you use the Monitor3 utility. See page 3-9 for more information.
  - Click  to check your ink levels.
  - Click  and then click the **Preview** button to see a preview of your printed image.
8. When you're finished choosing print options, click **Print**.

## Selecting the Correct Media Type

The following tables list the settings designed to produce the best prints on EPSON media:



Check the EPSON Web site (<http://prographics.epson.com>) or your authorized EPSON dealer for new papers and other media that may be available.

### *EPSON Stylus Pro 7000 cut sheet Media Type settings*

Product name	Product codes	Media Type setting
Photo Quality Ink Jet Paper	S041026, S041029, S041043, S041044, S041045, S041061, S041062, S041068, S041069, S041070, S041071, S041079	Photo Quality Ink Jet Paper
Photo Paper	S041280, S041156, S041140, S041141, S041142, S041143	Photo Paper
Photo Quality Glossy Film	S041075, S041074, S041073, S041072, S041071	Photo Quality Glossy Film
Poster Board—Semi-Gloss	S041237	Semigloss Photo Paper

### *EPSON Stylus Pro 7000 roll Media Type settings*

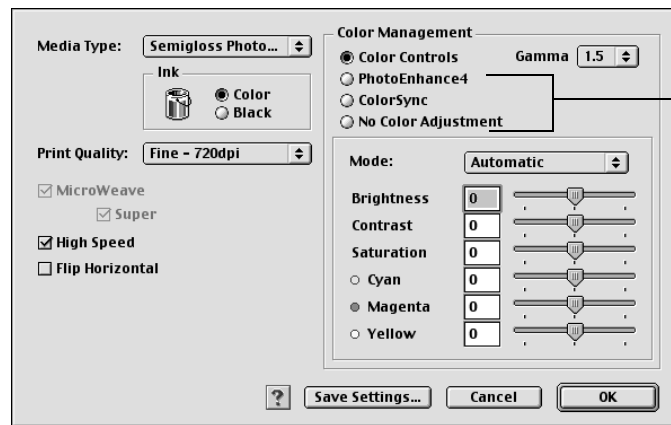
Product name	Product code	Media Type setting
Presentation Matte Paper	S041295	1440 dpi printing: Photo Quality Ink Jet Paper  Lower resolution printing: Presentation Matte Paper
Glossy Paper - Heavyweight	S041291	Photo Paper
Semi-gloss Paper - Heavyweight	S041292	Semigloss Photo Paper
Photo Glossy Paper	SP91021	Photo Quality Glossy Film
Backlight Film	SP91023	Photo Quality Glossy Film

If the paper or other material you're using is not listed in the tables, check the instructions included with the paper. If you're using a non-EPSON printing material, choose the closest setting. You may have to experiment with different settings to determine which one is best for the substrate you're using.

## Choosing Advanced Print Options

The advanced print options give you complete control over your printing environment. Use these settings to experiment or to fine-tune a range of options to meet your individual needs. Follow these steps to print with advanced settings:

1. Follow steps 1 through 4 on page 3-3.
2. Click **Custom** and then click **Advanced**. You see a dialog box like the following:



Each of these three configurations gives you different options on the lower part of the screen.

3. Choose the **Media Type** setting according to the guidelines on page 3-5. Then choose **Color** or **Black** ink.
4. Choose one of the following **Print Quality** settings:
  - Economy
  - Normal - 360dpi
  - Fine - 720dpi
  - Superfine - 1440dpi

The available print quality settings may be limited by the **Media Type** setting. Choose lower quality for faster printing, or **Superfine - 1440dpi** for best quality.

5. Choose any of the following:

- **Super MicroWeave**  
The **MicroWeave** and **Super MicroWeave** settings eliminate unwanted banding effects. These settings are automatically selected for all media types except plain paper.
- **High Speed**  
For fast, bidirectional printing at lower quality. If vertical lines in your printout are misaligned when you use the **High Speed** setting, you may need to turn it off or align the print head (as described on page 6-3).
- **Flip Horizontal**  
For printing a mirror image of your file. Use with backlight film.

6. Choose one of the following Color Management configurations:



Color Controls are most effective with RGB files.

- **Color Controls**  
This configuration lets you specify individual values for adjusting brightness, contrast, saturation, and CMY inks, or choose from the three Color Adjustment modes, as shown in the table on page 3-8. You can also choose from three Gamma settings, which control image contrast by modifying the midtones and midlevel grays. When you print on EPSON backlight film, choose **Vivid mode** and **+10 Saturation**.
- **PhotoEnhance4**  
When you choose this configuration, you see a sample image that reflects the settings you choose. See page 3-8 for a description of the available settings.
- **ColorSync**  
This configuration lets you select the **Epson Standard** profile, created specifically for your printer. Don't select any other printer profile you may have on your system. Then choose from three **Rendering Intent** settings for mapping colors to your printer's profile. See page 3-9 for more information.
- **No Color Adjustment**  
This setting disables color management in the printer driver. Choose this mode if you want to use a standalone color management module.

7. Click **Save Settings** if you want to have your advanced settings available for reuse. Then type a name for the group of settings and click **Save**. The name is added to your list of custom settings.
8. When you're finished setting advanced printer options, click **OK**.

## Color Management Settings

The following tables list the color management settings available when you choose either Color Controls, PhotoEnhance4, or ColorSync.

### *Color adjustment modes*

<b>Automatic</b>	Analyzes the color information in your image and optimizes color correction accordingly.
<b>Photo-realistic</b>	Produces sharper images and more vivid colors by automatically adjusting the contrast, saturation, and brightness. Corrects for overall under- or over-exposure of the original image.
<b>Vivid</b>	Intensifies colors and lightens the midtones and highlights. Best for print jobs with non-photographic images.
<b>1.5 Gamma</b>	Produces the same contrast values as earlier EPSON ink jet printers.
<b>1.8 Gamma</b>	Increases contrast.
<b>2.2 Gamma</b>	Matches image colors with sRGB devices.

### *PhotoEnhance4 settings*

<b>Tone</b>	Lets you choose from <b>Normal</b> for standard tone correction, <b>Hard</b> for high contrast, <b>Vivid</b> for more intense colors (as defined above), <b>Sepia</b> , and <b>Monochrome</b> .
<b>Effect</b>	Lets you choose from 4 special effects (and set the intensity): <b>Sharpness</b> , <b>Soft Focus</b> , <b>Canvas</b> , and <b>Parchment</b> .
<b>Digital Camera Correction</b>	Corrects noise and other flaws common to digital camera images.

*ColorSync Rendering Intent settings*

<b>Perceptual</b>	For photographic images. Maintains the relationship between colors as it scales them to fit within your printer's color gamut.
<b>Saturation</b>	For charts and business graphics. Maintains the relative saturation of colors from one gamut to another.
<b>Colorimetric</b>	For projects with known colors, such as labels and packaging. Maintains colors that fall within the gamut of both your monitor and printer.

## Managing Print Jobs

Your printer comes with several utilities that let you check on your print jobs and schedule, cancel, pause, or restart them. First you need to set up background printing, so you can continue to work on your Macintosh while a file is being printed. Note that background printing is slower and may also slow down your system.




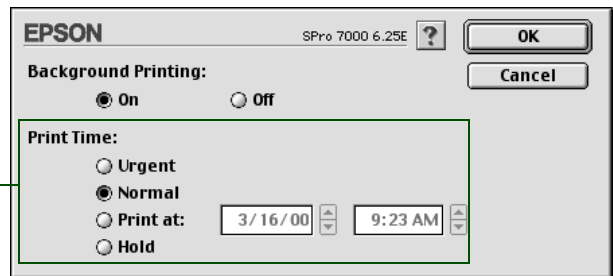
Note

If you experience problems, you may not be able to use background printing.

## Setting Up Background Printing

You can set up background printing from the Chooser or you can use the background printing button on the Print dialog box. Follow these steps to set up background printing:

1. Open the Print dialog box as described on page 3-3.
2. Click the background printing button . You see the following dialog box:



Not available if background printing is turned off

3. To turn background printing on, click the **On** button.

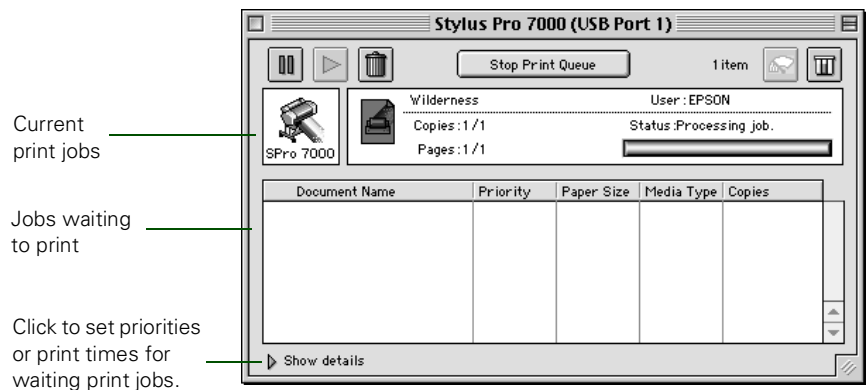
4. To select a priority for your print job in the queue of jobs waiting to print, click one of the following:
  - Urgent to print before any Normal priority job
  - Normal to print in the order the job is received
  - Print at: to print at the specific time you enter in the day and time in the fields to the right
  - Hold to hold the print job in the print queue until you're ready to release it using Monitor3; see the following section for details.
5. Click OK to save your settings and return to the printer settings dialog box.
6. Click Print to print your document.

If you selected **Print at:** or **Hold**, your document is spooled, but held in the print queue until the print time specified or until released using Monitor3, as described in the following section.

## Using Monitor3




The Monitor3 utility lets you prioritize and control your print jobs as well as monitoring their progress.

After you send a print job, click the current application icon at the right end of the menu bar and select **EPSON Monitor3**. You see a window like the following:



The progress bar tracks the current print job.

To cancel, hold, or restart a print job, click the document's name, then click one of the following buttons:

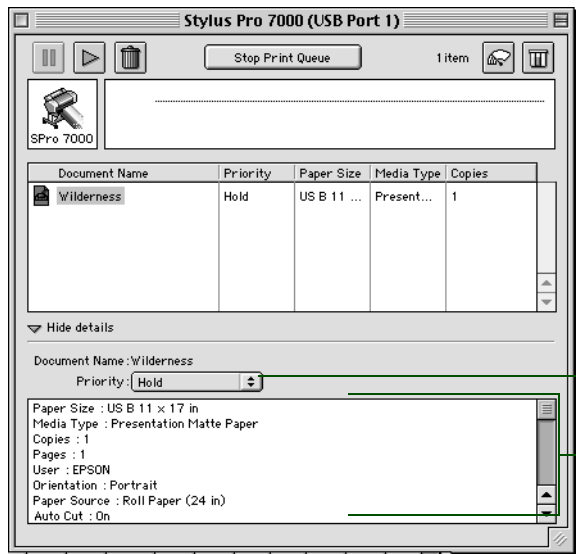
- Click  to delete
- Click  to restart
- Click  to hold

You can also double-click a file in the list to preview it, or double-click **Copies** to change the number of copies to be printed.

If you want to change the printing priority of a print job or set a specific time for it to print, click the **Show details** arrow at the bottom of the window. The **Priority** list becomes active.




If you see a stop sign icon and the message **Print queue on hold** in the EPSON Monitor3 dialog box, select **Start print queue** from the Printer menu to release the queue and resume printing.



Priority list box

Settings selected for the highlighted print job



Click the print job whose priority you want to change. Then click the **Priority** list box and select one of the following settings:

- **Normal** prints the job in the order it is received
- **Urgent** moves the job before Normal priority jobs in the print queue
- **Hold** holds the job in the print queue until you're ready to release it for printing by clicking  restart

- **Print Time** opens the Set Print Time dialog box. Enter the date and time you want to print the document, then click **OK**.





Click **Stop Print Queue** to stop all printing until you click **Start Print Queue**.

You can also click  to check your ink levels or click  to start the print head cleaning utility. See page 6-2 for more information about the cleaning utility.

## Cancelling Printing

If you need to cancel a print job, follow these steps:

1. Press the **Power** button to turn off the printer.
2. Do one of the following, depending on whether you're using background printing:
  - If background printing is turned off, hold down the **⌘** key on your keyboard and press the **(.)** period key to cancel the print job.
  - If background printing is turned on, select **EPSON Monitor3** from the application menu. Click the  button, then click the stop button  to cancel the print job.

## Chapter 4: Printing with EPSON Drivers for Windows

The EPSON Stylus Pro 7000 comes with drivers and utilities that let you print and manage print jobs in non-PostScript mode without a RIP. ICC profiles are included, so you can use advanced color management features of your applications or the driver itself.

The driver CD-ROM also includes an electronic *Reference Guide* to your printer and EPSON printer software. You can read the guide using a Web browser, such as Netscape Navigator or Microsoft Explorer, versions 3.0 or later.

This chapter includes the following information:

- Choosing basic print options
- Choosing paper and layout options
- Choosing advanced print options
- Managing print jobs

### Choosing Basic Print Options

Before you print, you need to set basic printing properties. The EPSON driver offers automatic settings that optimize print quality and speed when you're using EPSON media. You can also choose advanced settings for more control over your printer and color management. See page 4-7 for instructions on advanced settings.

Follow these steps to make basic settings for automatic printer adjustments:

1. Choose **Print** from the File menu of your application. You see the Print dialog box.
2. Make sure your EPSON Stylus Pro 7000 or printer is selected, and then click the **Properties** button. (If you see a **Setup, Printer, or Options** button, click it instead. Then click **Properties** on the next window.)



### Note

If you need more information about print options, you can click the **Help** button on any dialog box.

A dialog box like the following appears:

This box shows you the current settings, but you can't change them from here.



Click if you need more information.

3. Select a **Media Type** setting appropriate for the media you're printing on, as listed in the tables on page 4-4.
4. Select **Color** or **Black** ink.
5. Set the **Mode** option as follows:
  - Click **Automatic** to have the printer driver analyze the contents of your image or file and make the appropriate printing adjustments. If a **Quality/Speed** slider appears in the Mode box, set it according to the priorities of your print job. (Depending on the Media Type setting, this slider may not appear.)
  - Click **PhotoEnhance** to choose from a number of settings designed for low-resolution photographs: **Standard**, **People**, **Nature**, **Soft Focus**, and **Sepia**. You can also select **Digital Camera Correction** to correct noise and other flaws common to digital camera images.



You can also create your own settings and add them to this list. See page 4-9 for more information.

- Click **Custom** and then choose one of the print job types from the custom settings list, as described below:

*Custom print job settings*

Setting	Usage
Text/Graph	Intensifies colors and lightens the midtones and highlights. Best for print jobs with non-photographic images.
ICM	Adjusts colors based on your printer's ICC profile, using the Image Color Matching system (effective in Windows 98/2000 only). If you're using an ICM-compatible monitor, adjusts printed colors to closely match screen colors.
sRGB	Adjusts colors using the small-gamut sRGB (standard red green blue) color space. Best for color matching with other sRGB devices, or for images designed for the Web.

6. When you're finished choosing print options, click the **Paper** tab and follow the instructions on page 4-5 for choosing paper and layout options.

## Selecting the Correct Media Type

The following tables list the settings designed to produce the best prints on EPSON media:



Check the EPSON Web site (<http://prographics.epson.com>) or your authorized EPSON dealer for new papers and other media that may be available.

### *EPSON Stylus Pro 7000 cut sheet Media Type settings*

Product name	Product codes	Media Type setting
Photo Quality Ink Jet Paper	S041026, S041029, S041043, S041044, S041045, S041061, S041062, S041068, S041069, S041070, S041071, S041079	Photo Quality Ink Jet Paper
Photo Paper	S041280, S041156, S041140, S041141, S041142, S041143	Photo Paper
Photo Quality Glossy Film	S041075, S041074, S041073, S041072, S041071	Photo Quality Glossy Film
Poster Board—Semi-Gloss	S041237	Semigloss Photo Paper

### *EPSON Stylus Pro 7000 roll media Type settings*

Product name	Product code	Media Type setting
Presentation Matte Paper	S041295	1440 dpi printing: Photo Quality Ink Jet Paper  Lower resolution printing: Presentation Matte Paper
Glossy Paper - Heavyweight	S041291	Photo Paper
Semi-Gloss Paper - Heavyweight	S041292	Semigloss Photo Paper
Photo Glossy Paper	SP91021	Photo Quality Glossy Film
Backlight Film	SP91023	Photo Quality Glossy Film

If the paper or other material you're using is not listed in the tables, check the instructions included with the paper. If you're using a non-EPSON printing material, choose the closest setting. You may have to experiment with different settings to determine which one is best for the substrate you're using.

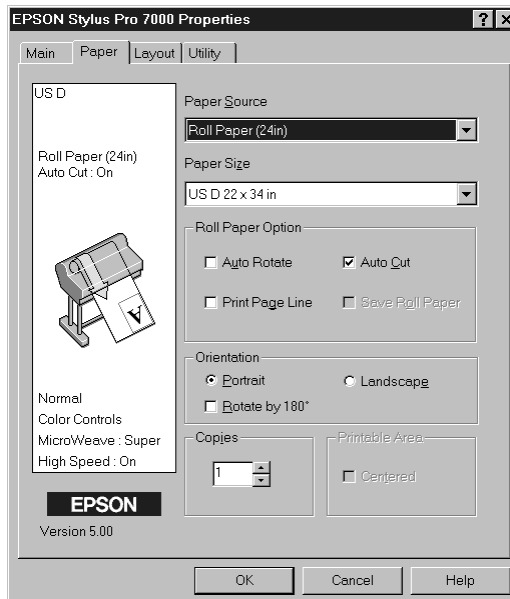


Many application settings override the printer's Paper options. Always verify settings to get the results you expect.

## Choosing Paper and Layout Options

Many of the Paper options correspond to paper handling features that you can also set through the control panel. Software options give you additional settings and override control panel settings. Follow these steps to choose Paper and layout options:

1. From the Main Print Properties dialog box, click the **Paper** tab. You see the Paper dialog box:



2. Select the type of paper you loaded in the printer from the **Paper Source** list.

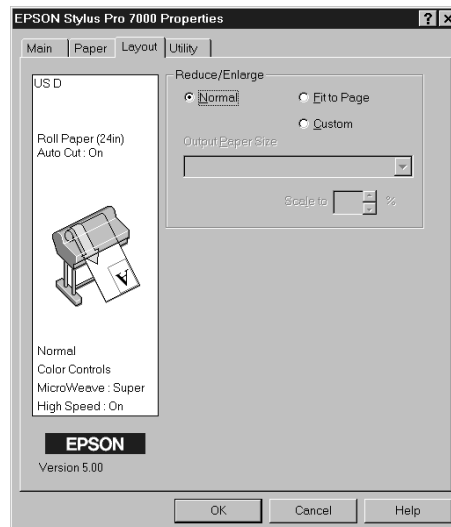
If your image is more than 62 inches long, select **Roll Paper (Banner)**. You can also use this setting to print a series of continuous images without any “margin space” between them.

3. From the **Paper Size** list, select your image size (if you're using roll paper) or the size of your sheet. For paper size equivalents in inches, see page 8-2. If your size is not listed, select **User Defined**. Then enter the size in hundredths of an inch (or centimeters).



If you're using roll paper and you choose a paper size that's larger than your image, the image will be centered in the space you selected.

4. When you're using roll paper, set the following options:
  - **Auto Rotate**  
Saves paper if your document length is shorter than the printable width of the paper roll. The document will be turned automatically by 90 degrees and printed crosswise. This setting is not available for Roll Paper (Banner).
  - **Auto Cut**  
Choose this option if you want the paper to be cut automatically after each page is printed.
  - **Print Page Line**  
Prints trim lines on the right and bottom edges of your pages.
  - **Save Roll Paper**  
Saves paper by not feeding the blank portion of the last page of your document. Applicable in Roll Paper (Banner) mode only.
5. Make the settings you want for **Orientation**, **Copies**, and **Printable Area**.
6. If you want to reduce or enlarge your image, click the **Layout** tab. You see a window like the following:



7. Choose the appropriate settings, then click **OK**.

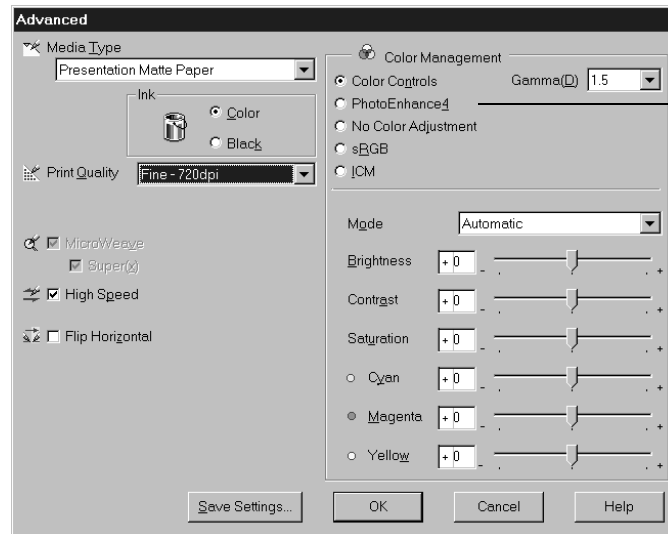
## Choosing Advanced Print Options

The advanced print options give you complete control over your printing environment. Use these settings to experiment or to fine-tune a range of options to meet your individual needs. Follow these steps to print with advanced settings:

1. Follow steps 1 through 4 on pages 4-1 to 4-2.
2. Click **Custom** and then click the **Advanced** button that appears on the screen.

You see a dialog box like the following:

When you choose PhotoEnhance4, you see a different set of options on the lower part of the screen.



3. Choose the **Media Type** setting according to the guidelines on page 4-2. Then choose **Color** or **Black** ink.
4. Choose one of the following **Print Quality** settings:
  - Normal - 360dpi
  - Fine - 720dpi
  - Superfine - 1440dpi

The available print quality settings may be limited by the **Media Type** setting. Choose lower print quality for faster printing, or **Superfine - 1440dpi** for best quality.

5. Choose any of the following:

- **Super MicroWeave**  
The **MicroWeave** and **Super MicroWeave** settings eliminate unwanted banding effects. These settings are automatically selected for all media types except plain paper.
- **High Speed**  
For fast, bidirectional printing at lower quality. If vertical lines in your printout are misaligned when you use the **High Speed** setting, you may need to turn it off or align the print head (as described on page 6-3).
- **Flip Horizontal**  
For printing a mirror image of your file. Use with backlight film.

6. Choose one of the following Color Management configurations:

- **Color Controls**  
This configuration lets you specify individual values for adjusting brightness, contrast, saturation, and CMY inks, or choose from the three Color Adjustment modes, as shown in the table on page 4-9. You can also choose from three gamma settings, which control image contrast by modifying the midtones and midlevel grays. When you print on EPSON backlight film, choose **Vivid** mode and **+10 Saturation**.
- **PhotoEnhance4**  
When you choose this configuration, you see a sample image that reflects the settings you choose. See page 4-9 for a description of the available settings.
- **No Color Adjustment**  
This setting disables color management in the printer driver. Choose this mode if you want to use a standalone color management module.



Color Controls are most effective with RGB files.

- **ICM**  
Adjusts colors based on your printer's ICC profile, using the Image Color Matching system (effective in Windows 98/2000 only). If you're using an ICM-compatible monitor, adjusts printed colors to closely match screen colors.
  - **sRGB**  
Adjusts colors using the small-gamut sRGB (standard red green blue) color space. Best for color matching with other sRGB devices, or for images designed for the Web.
7. Click **Save Settings** if you want to have your advanced settings available for reuse. Then type a name for the group of settings and click **Save**. The name is added to your list of custom settings.
  8. When you're finished setting advanced printer options, click **OK**.

### *Color Management Settings*

The following tables list the color management settings available when you choose either Color Controls or PhotoEnhance4.

#### *Color adjustment modes*

<b>Automatic</b>	Analyzes the color information in your image and optimizes color correction accordingly.
<b>Photo-realistic</b>	Produces sharper images and more vivid colors by automatically adjusting the contrast, saturation, and brightness. Corrects for overall under- or over-exposure of the original image.
<b>Vivid</b>	Intensifies colors and lightens the midtones and highlights. Best for print jobs with non-photographic images.
<b>1.5 Gamma</b>	Produces the same contrast values as earlier EPSON ink jet printers.
<b>1.8 Gamma</b>	Increases contrast.
<b>2.2 Gamma</b>	Matches image colors with sRGB devices.

*PhotoEnhance4 settings*

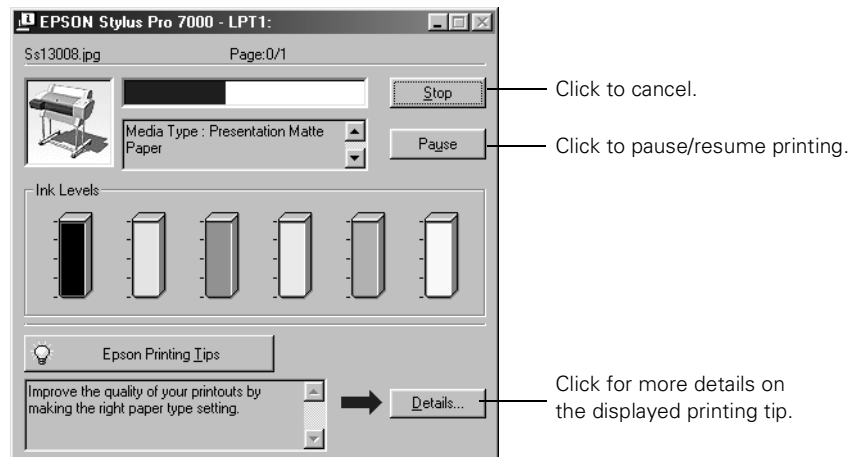
<b>Tone</b>	Lets you choose from <b>Normal</b> for standard tone correction, <b>Hard</b> for high contrast, <b>Vivid</b> for more intense colors (as defined above), <b>Sepia</b> , <b>Monochrome</b> , and <b>None</b> (no tone adjustment).
<b>Effect</b>	Lets you choose from 4 special effects (and set the intensity): <b>Sharpness</b> , <b>Soft Focus</b> , <b>Canvas</b> , <b>Parchment</b> , and <b>None</b> .
<b>Digital Camera Correction</b>	Corrects noise and other flaws common to digital camera images.

## Managing Print Jobs

Your printer comes with several utilities that let you check on your print jobs and schedule, cancel, pause, or restart them. The Progress Meter opens each time you send a print job. The Spool Manager (not available with Windows NT) appears on the taskbar when you print. Status Monitor 3, which also appears on the taskbar, lets you check the printer's status as well as monitoring print jobs. See page 5-10 for information about Status Monitor 3.

## Using the Progress Meter

After you send a print job, the progress meter window appears on your screen:



You can use the buttons to cancel, pause, or restart your print job. You also see the amount of ink remaining in each cartridge and view various printing tips.

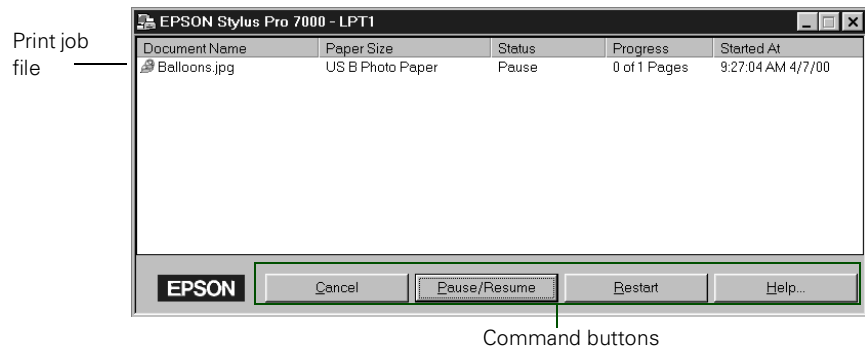
If you don't want the progress meter to appear, you can turn it off. See page 5-11 for instructions.

## Using the Spool Manager

The Spool Manager (not available with Windows NT) displays the status of your print job files and lets you control them.

To open spool manager while you're printing, click the **EPSON Stylus Pro 7000** icon that appears on the taskbar at the bottom of the screen.

You see the Spool Manager window:



To cancel, pause, resume, or restart a print job, click the job to highlight it; then click the corresponding command button on the bottom of the window.



## Chapter 5: Monitoring the Printer

The EPSON Stylus Pro 7000 includes a number of utilities for monitoring the printer. The control panel displays status messages and error messages, and the lights alert you when a problem occurs or your ink runs out. Status monitoring software utilities for both Macintosh and Windows systems are included with the EPSON drivers.

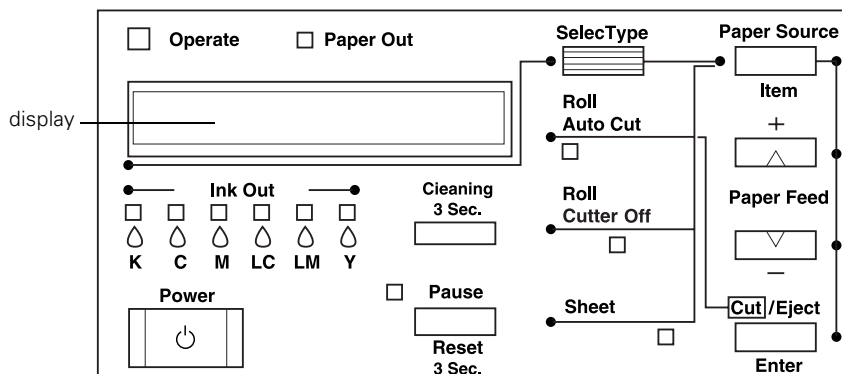
The RIP Station 5100 also displays error messages and provides printer monitoring. See the *RIP Station 5100 User Guide* for more information.

This chapter tells you how to respond to the lights and messages, how to use the status-checking features on the control panel, and how to use the monitoring software. The following information is covered:

- Checking printer status from the control panel
- Responding to control panel lights and messages
- Checking printer status from a Macintosh
- Checking printer status from Windows

### Checking Printer Status from the Control Panel

The printer's control panel includes buttons, lights, and a liquid crystal display (LCD):



You can use the control panel to check the amount of ink remaining, total number of prints, and the status of your cutter blade and other printer parts. You can also print a status check.

In addition to checking the status of various components, you can use the SelecType™ menus on the printer's control panel to configure printer settings and perform maintenance operations. See the Appendix for more information.

## Pausing and Resetting the Printer

If you need to stop the printer during a print job, press the **Pause** button. Press the **Pause** button again to resume printing.

If you decide to cancel a job after the printer has started processing it, you can reset the printer. Press the **Pause** button and hold it down for 3 seconds. This clears all data in the printer's memory.

## Monitoring Normal Printer Operation

Messages appear on the control panel display and lights come on or flash to indicate various phases of printer operation. The following table explains the status messages and lights:

### *Status messages*

Message	Light	Explanation or response
READY	Operate light on	Printer is ready to print.
PRINTING	Operate light flashing	Printer is receiving data.
INK DRY <number> MIN	Pause light flashing	Printer is paused to let ink dry. Wait for the number of minutes shown.
INK CHARGING <number> %	Operate and Pause light flashing	Printer is charging the ink delivery system.
TRANSPORT PREP <number> %	Operate light flashing	Printer is draining the ink to prepare for transport.
RESET	All lights flash briefly	Printer is resetting.
PRESS PAUSE BUTTON	Pause light on	Press the <b>Pause</b> button to continue.
WAIT	Pause light on or flashing	Printer is warming up, initializing or charging ink.
PAUSE	Pause light on	Printer is paused. To resume printing, press the <b>Pause</b> button.

## Checking Ink Levels and Component Life

You can view printer status information on the control panel display, including amount of ink remaining in each cartridge, page count, and the status of various printer parts. Follow these steps:

1. Press the **SelecType** button on the control panel. Press it several times until you see **PRINTER STATUS MENU** on the display.
2. Press the **Item** button. You see **VERSION <number>** on the display. This indicates the firmware version installed in your printer.
3. Continue pressing the **Item** button to display the amount remaining for each of the 6 inks or service life remaining for a number of printer parts.

The indicators read as follows:

E\*\*\*\*\*F = full (or full life remaining)  
 E\*\*\*\* F = 3/4 full (or 3/4 life remaining)  
 E\*\*\* F = 1/2 full (or 1/2 life remaining)  
 E\*\* F = 1/4 full (or 1/4 life remaining)  
 E\* F = nearly empty (or service life near end)  
 <nn>% F = less than 10% of ink (or service life) remaining

Following is a list of the items displayed. Note that all parts on the list (except the ink cartridges and paper cutter) need to be replaced by an authorized EPSON service center.

INK LEFT-K (black)	TOTAL PRINTS
INK LEFT-C (cyan)	WASTE INK (waste ink system)
INK LEFT-M (magenta)	CR MOTOR (carriage motor)
INK LEFT-LC (light cyan)	PF MOTOR (paper feed motor)
INK LEFT-LM (light magenta)	HEAD UNIT (print head)
INK LEFT-Y (yellow)	CLEANER (cleaning unit)
CUTTER LIFE (paper cutter)	

4. Press the **SelecType** button to exit the Printer Status menu.

## Printing a Status Check

The status check shows the current default settings, amount of ink remaining in each cartridge, page count, and component life. Follow these steps to print a status check:

1. Load a sheet of paper in the printer, following the instructions on 2-13. (You can print test pages on roll paper, but you will use more paper.)
2. Press the **SelecType** button on the control panel. Press it repeatedly until you see **TEST PRINT MENU** on the display.
3. Press the **Item** button until you see **STATUS CHECK=PRINT** on the display.
4. Press the **Enter** button. The status check prints. The amount of ink left or component life is indicated as follows:

E\*\*\*\*\*F = full (or full life remaining)  
E\*\*\*\* F = 3/4 full (or 3/4 life remaining)  
E\*\*\* F = 1/2 full (or 1/2 life remaining)  
E\*\* F = 1/4 full (or 1/4 life remaining)  
E\* F = nearly empty (or service life near end)  
E F = empty (or service life ended)

5. Press the **SelecType** button to exit the Test Print menu.

## Responding to Messages and Light Indicators

When your ink or paper runs out or a problem occurs, a message appears on the display. The lights on the control panel come on or flash. The following table lists the messages alphabetically and includes an explanation and instructions for correcting the problem.

### *Error messages*

Message	Light	Explanation	Response
COVER OPEN	Pause light on	Lower cover is open.	Close the lower cover. Make sure both tabs are fastened. Restart print job for best results.
INK LOW	Ink Out light(s) flashing	Ink cartridge(s) are nearly empty (printing continues).	Replace ink cartridge(s) indicated by <b>Ink Out</b> light(s). See page 6-7 for instructions.
INK OUT	Ink Out light(s) on	Ink cartridge(s) are empty (printing stops).	Replace the ink cartridge(s) indicated by <b>Ink Out</b> light(s). See page 6-7 for instructions.
LOAD PAPER	Paper Out light on	Paper set lever is down while loading paper.	Pull the paper set lever up after you load paper.
LOAD ROLL PAPER LOAD SHEET PAPER	Paper Out light on	Paper source setting in print options is different from control panel.	Make sure the right paper is loaded and the paper source setting is the same on the control panel and print options.
MAINTENANCE REQ. <error number>		A printer part will need to be replaced soon.	Note the error number and contact EPSON as described in the Introduction.
MAINTENANCE REQ 0100		The waste ink system is almost full.	Call an authorized EPSON servicer to schedule replacement of the waste ink system.
NO INK CARTRIDGE	Ink Out light(s) on	Ink cartridge(s) not installed.	Install ink cartridges as indicated by the lights. See page 6-7 for instructions. (Message appears when you are replacing the cartridge.)
OPTION I/F ERROR		Wrong interface card installed.	Turn off the printer and remove the card. See page 1-4 for instructions.
PAPER JAM	Paper Out light flashing	Paper has jammed in the printer.	Remove the jammed paper. See page 7-11 for more information.

## 5-6 | Monitoring the Printer

### *Error messages (continued)*

Message	Light	Explanation	Response
PAPER NOT CUT	Paper Out light flashing	Roll paper was not cut completely.	Cut the paper manually, then remove the cut paper from the printer. Reload paper, as described on page 2-7.
		Cut paper did not fall off.	Remove the cut paper from the printer. Reload paper.
PAPER NOT STRAIGHT	Paper Out light flashing	Paper slipped and fed into the printer at an angle.	Reload paper, making sure the edges are straight and aligned with both rows of holes.
PAPER OUT	Paper Out light on	No paper is loaded.	Load paper.
		Paper ran out.	Remove any printouts or paper remaining in the printer and load more paper.  If the message appears during a print job, reset the printer by pressing the <b>Pause</b> button for 3 seconds. Then load paper and resend the job.
RELOAD PAPER	Paper Out light on	Paper could not be reversed into the printing position.	Remove the paper. Reload it so that the right and bottom edges are straight and aligned with both rows of holes.
		Image is too wide for the paper loaded in the printer.	Resize your image or load wider paper.
		Paper is not fully ejected.	Cut the paper at the paper insertion slot, then reload paper.
		<b>PAPER NOT CUT</b> error was cleared.	Reload paper.
REMOVE PAPER	Paper Out light on	Paper is too thick for head cleaning.	Push the paper set lever down to remove the paper. Head cleaning automatically starts. After cleaning, reload paper.
SECURE PAPER LEVER	Paper Out light on	Paper set lever was released during the printing process or another operation.	Pull the paper set lever all the way up. Start printing again from the beginning for best results.
SERVICE REQ. <error number>	All lights flashing	An error has occurred.	Note the error number, and turn the printer off and then on. If the message remains, contact EPSON as described in the Introduction.


*Error messages (continued)*

Message	Light	Explanation	Response
SERVICE REQ 00000100	All lights flashing	The waste ink system is full.	Contact EPSON to have the waste ink system replaced.
TURN PWR OFF AND ON		This message appears after you clear a paper jam.	Turn the printer off and then on again.
UNABLE TO PRINT		You tried to print a test pattern while an error condition was present.	After 3 seconds the message disappears. Press the <b>Pause</b> button to exit SelectType mode. If the message appears again, clear the error before you print.

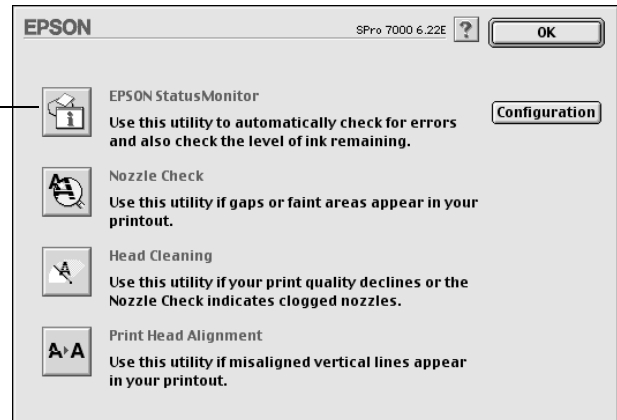
## Checking Printer Status from a Macintosh

The Macintosh Status Monitor utility lets you check the levels of ink in your printer and configure error messages and spooling features.

Follow these steps to check ink levels:

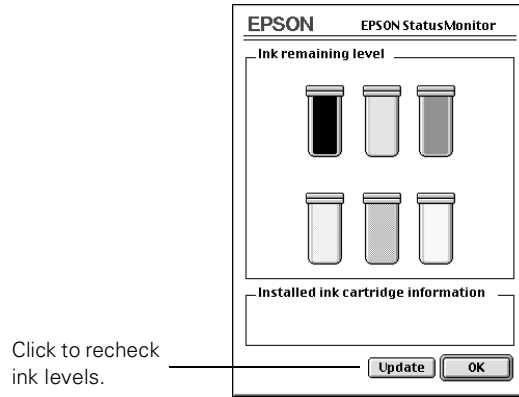
1. Click the utility button  on the Print or Page Setup dialog box. You see the Utility menu:

Click to open the Status Monitor utility.



2. Click the EPSON StatusMonitor icon.


The window opens, displaying the amount of ink remaining in the printer:



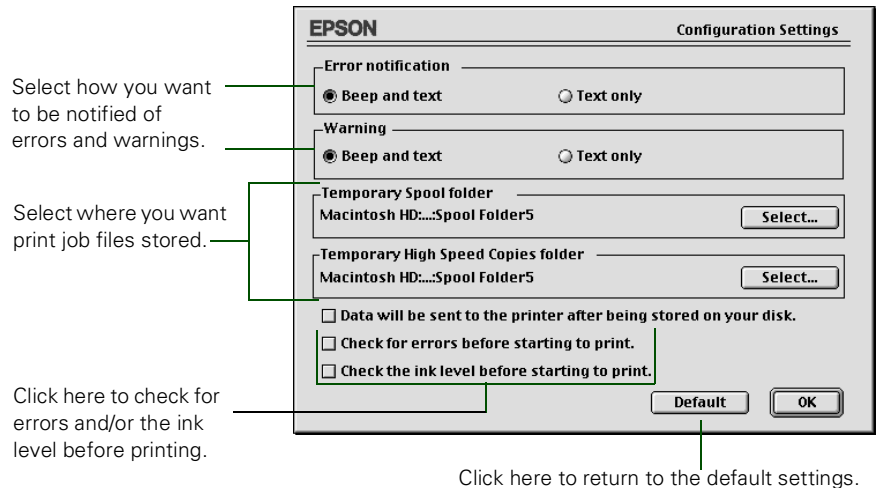
3. To close the Status Monitor, click OK.

## Configuring Printer Monitoring

You can configure the way you want the printer to handle error and warning messages, ink level checks, and print file handling in the Configuration Settings dialog box. Follow these steps:

1. Click the utility button  on the Print or Page Setup dialog box. You see the Utility menu.
2. Click the Configuration button.

You see the Configuration Settings dialog box:



3. Select from the following configuration options:



Warning messages allow printing to continue. Error messages are more serious and cause printing to stop.

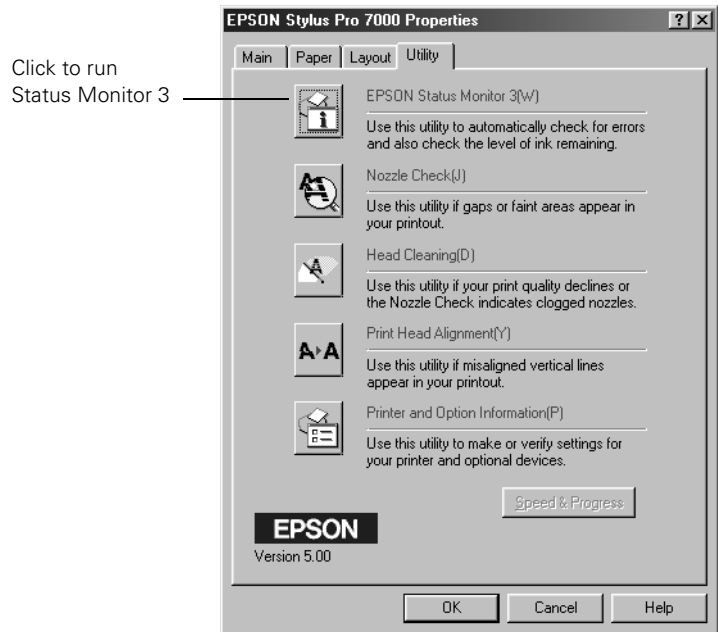
- **Error notification** lets you choose whether you want your system to beep and display error message text or just display text if your printer encounters an error.
- **Warning** lets you choose whether warning messages beep and display text or display text only.
- **Temporary Spool folder** and **Temporary High Speed Copies folder** let you select the folders on your hard disk that store the temporary files created when you send a job to the printer. Click the **Select** button to change the folder from the default folder shown.
- **Data will be sent to the printer after being stored on your disk** prevents print head pausing. Normally, graphics are sent in rectangular bands. When you select this option, your Macintosh stores the entire image on its hard drive and then sends it to the printer as a whole (recommended only for older Macintosh systems).
- The last two check boxes let you choose to have your software check for errors or low ink levels before starting your print job.

4. When you're finishing changing your configuration options, click **OK** to return to the Utility menu.

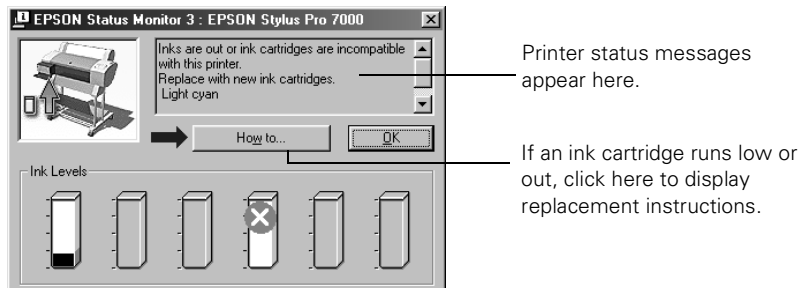
## Checking Printer Status from Windows

The Windows Status Monitor 3 utility lets you check individual levels of ink in your printer, warns you when errors occur, and allows you to control the way printing is monitored. Follow these steps to open the utility:

1. Access the Main Printer Properties dialog box.
2. Click the **Utility** tab. You see the Utility menu:



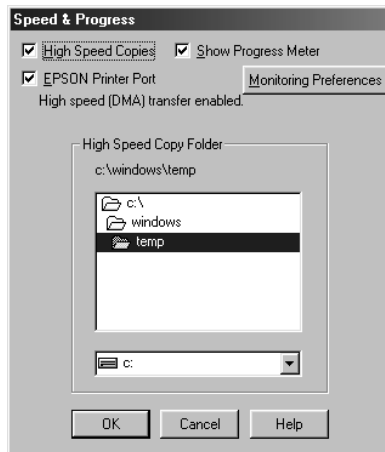
3. Click the **EPSON Status Monitor 3** button. The following window appears. (It also opens automatically when an error occurs.)



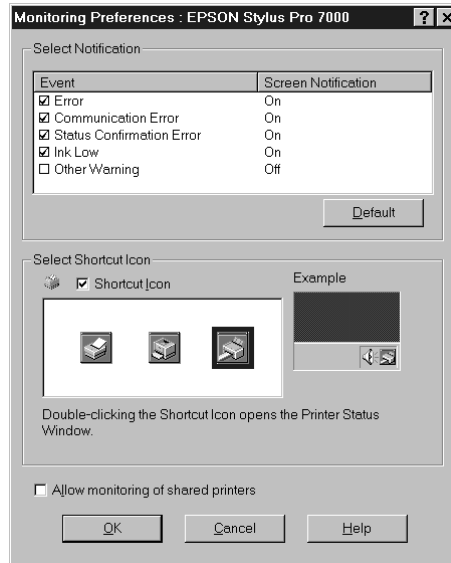
## Setting Monitoring Preferences

You can have Status Monitor 3 alert you to any error conditions while you're working. This lets you know if one of your cartridges runs out of ink or if any other problems occur. Follow these steps to set monitoring preferences:

1. Click **Start**, point to **Settings**, and click **Printers**. Make sure your printer icon appears in the Printers window.
2. Right-click the **Stylus Pro 7000** icon, then click **Properties**.
3. Click the **Utility** tab, then click the **Speed & Progress** button. You see the Speed & Progress dialog box.



4. Click the **Monitoring Preferences** button. You see the Monitoring Preferences window:



5. Select the Notification options you want to use.
6. If you want to have the Status Monitor icon appear in your Windows taskbar, click the **Shortcut Icon** checkbox. Then select the icon you want to use.  
  
After you enable the shortcut, you can simply click the icon to open the Status Monitor window.
7. Select **Allow monitoring of shared printers** if your printer is shared and you want to let other users monitor it.
8. Click **OK** to save your settings.



After you enable the Status Monitor Shortcut Icon, you can right-click the icon to display the Monitoring Preferences dialog box.

## Chapter 6: Maintaining and Transporting the Printer


The EPSON Stylus Pro 7000 requires very little maintenance to keep working at its best. This chapter describes the following routine procedures:

- Running a nozzle check
- Running a cleaning cycle
- Aligning the print head
- Replacing ink cartridges
- Replacing the paper cutter blade
- Running the Speed and Progress utility
- Cleaning the printer
- Transporting the printer
- Replacing the waste ink system

### Running a Nozzle Check

You can run a nozzle check either from the printer's control panel or from a computer with the EPSON utilities.

The nozzle check prints a pattern of dots that lets you see if any print head nozzles are clogged. If any dots are missing, you can run a cleaning cycle to clear the nozzles. Follow these steps to print a nozzle check:

1. Load a sheet of paper in the printer, following the instructions on page 2-13. (You can print a nozzle check on roll paper, but you will use more paper.)
2. To run a nozzle check from a Macintosh, click the utility button  on the Print or Page Setup dialog box. Then click the Nozzle Check button and follow the instructions on the screen.

To run a nozzle check from Windows, access the Main Printer Properties dialog box and click the **Utility** tab. Then click the Nozzle Check button and follow the instructions on the screen.

To run a nozzle check from the printer's control panel, press the **SelectType** button repeatedly until you see **TEST PRINT MENU** on the display.

- Press the **Item** button. You see **NOZZLE CHECK=PRINT** on the display.
- Press the **Enter** button to print the nozzle check.

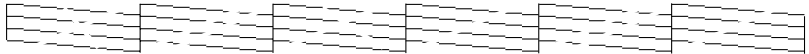


The Ink Pad number under the nozzle check pattern indicates the remaining percentage of the waste ink system. You will need to contact your authorized EPSON servicer when this number is low. The printer will stop and display an error message when the system needs to be replaced.

3. Examine the nozzle check pattern. It should look something like this:



Each line should be complete, with no gaps in the dot pattern. If any dots are missing, as shown below, you need to run a cleaning cycle. See the following section for instructions.




### Running a Cleaning Cycle

If your printed image is unexpectedly light or faint or dots are missing from the image, you may need to run a cleaning cycle. This unclogs the print head nozzles so they can deliver ink properly.

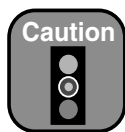
You can run a cleaning cycle either from the printer's control panel or from a computer with the EPSON utilities.

The cleaning process uses ink, so you should run it only if print quality declines. Always run a nozzle check first to confirm that the head needs cleaning; the nozzle check uses only a small amount of ink.

Follow these steps to run a cleaning cycle:

1. Make sure none of the **Ink Out** lights is on or flashing. (If so, you need to replace the indicated ink cartridge before you can run a cleaning cycle.)
2. To run the cleaning cycle from a Macintosh, click the utility button  on the Print or Page Setup dialog box. Then click the **Head Cleaning** button and follow the instructions on the screen.

To run the cleaning cycle from Windows, access the Main Printer Properties dialog box and click the **Utility** tab. Then click the **Head Cleaning** button and follow the instructions on the screen.



To avoid damaging the printer, don't turn it off until the cleaning cycle is finished and the **Pause** light has stopped flashing.

To run the cleaning cycle from the printer's control panel, press the **Cleaning** button and hold it for at least 3 seconds. The **Pause** light flashes as the printer cleans its print head. The cleaning cycle takes about three minutes and does not use any paper.

3. When the **Pause** light goes off, run a test print or a nozzle check to confirm that the head is clean.


You may need to run the cleaning cycle several times to get a clean nozzle check pattern. For effective cleaning, always run a test print or nozzle check between cycles. If the lines on the pattern still appear broken after several cleaning cycles, contact EPSON for assistance.

## Aligning the Print Head

If banding appears on your prints, or vertical lines are not straight, you need to align the print head. You can use the Print Head Alignment utility if you have the EPSON printer driver installed. If not, you can align the print head using the control panel.

For best results, use EPSON 24-inch roll paper. The process takes about 15 minutes (to print 12 patterns of 7 rows each) and aligns the print head for all modes and resolutions.

## Running the Print Head Alignment Utility

1. Load roll paper in the printer, following the instructions on page 2-3.
2. Macintosh: click the utility button  in the Print or Page Setup dialog box.

Windows: access the Main Printer Properties dialog box and click the **Utility** tab.

3. Click the **Print Head Alignment** button.
4. Follow the messages on your screen. The head alignment patterns are printed.

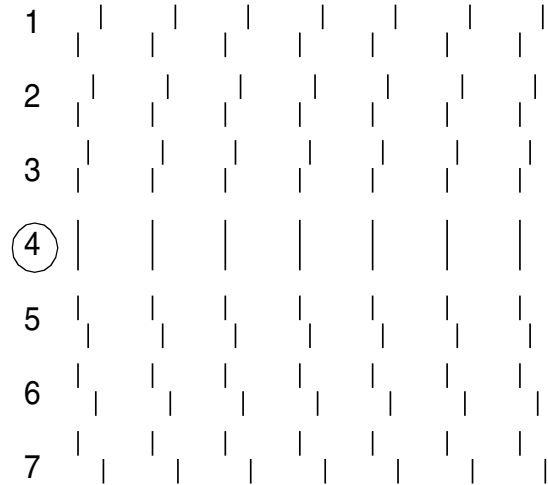
## 6-4 | Maintaining and Transporting the Printer

5. After all the patterns have printed, choose the row number that has the smallest gap in each pattern. In the first example below, row 4 has the smallest gaps. In the second example, row 6 has the smallest gaps.

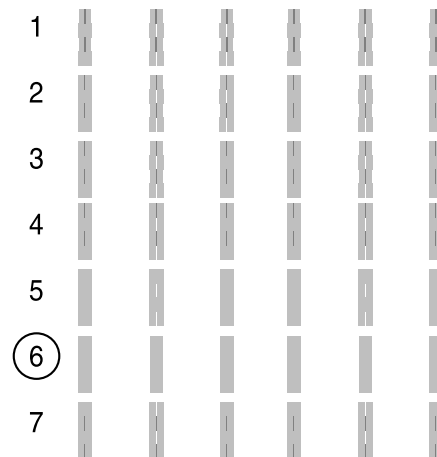


Each pattern consists of seven numbered rows.

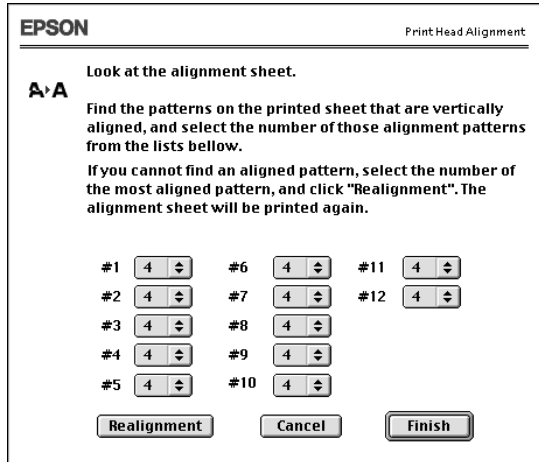
patterns #1-5, #7, #9-12



patterns #6, #8



6. Select the row you chose in step 5 for each pattern (for example, row 4), then click **Finish**.



If the set with the smallest gap is unclear and can't be selected, click the **Realignment** button and repeat from step 5.

## Aligning the Print Head from the Control Panel

If you are using the RIP Station 5100 or a third party driver and you don't have the EPSON printer driver installed, you can align the print head using the control panel.

- First you print a series of alignment or adjustment patterns.
- Then you determine which numbered row of patterns has the best vertical alignment (smallest gaps). You enter the information on the control panel to change the print head alignment.

Follow these steps to align the print head using the control panel:

1. Load roll paper in the printer, following the instructions on page 2-7.
2. Press the **SelecType** button until **HEAD ALIGNMENT MENU** is displayed.
3. Press the **Item** button. **PAPER THICK=STD** appears on the display.

If you're using EPSON paper, leave this setting on **STD**.

## 6-6 | Maintaining and Transporting the Printer

If you're using other media, enter the thickness value of the paper in 0.1-mm increments by pressing the + or – button.

4. Press the **Enter** button to save the setting. **ADJUST. PATT.= ALL** appears on the display.
5. Press the **Enter** button to print the full series of alignment patterns. Each pattern consists of seven numbered rows.

If you want to print a single alignment pattern, press the + or – button until the pattern number appears. Then press the **Enter** button.

After you have printed all the patterns, you need to check them carefully to determine which row in each set has the smallest gaps. Refer to the examples shown on page 6-4, then continue with the following steps to complete the alignment procedure:

6. Examine pattern #1 (or the pattern you printed) and determine which row of lines has the smallest gaps.
7. Check the control panel display. It should show something like **#1 = 4**, indicating that row 4 is selected for pattern #1.
8. Use the + or – button to select the best aligned row for pattern #1. Then press the **Enter** button to register the setting. The control panel display changes to show **#2 = 4**.
9. Repeat steps 6 to 8 for each pattern you printed. If you need to verify any of the settings, press **Enter** repeatedly to cycle through the patterns.

After you have registered all the patterns, press the **Pause** button to exit head alignment mode and return to normal printer operation.



For best results, use genuine EPSON cartridges and do not refill them. Damage to your printer attributable to the use of other consumables is not covered by EPSON's warranty. Color accuracy may vary considerably if you use non-EPSON inks.



Leave the empty cartridge in the printer until you are ready to replace it.

## Replacing Ink Cartridges

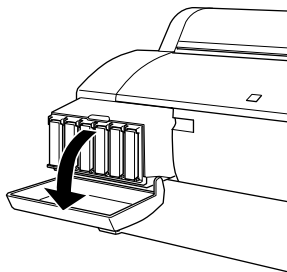
When one of the Ink Out lights is flashing (and INK LOW is displayed on the control panel), the corresponding cartridge is almost out of ink. Make sure you have a replacement cartridge. When the light stays on and INK OUT is displayed, the cartridge is empty. You must replace the cartridge before you can continue printing.

Use the following EPSON ink cartridges:

- |           |         |                 |         |
|-----------|---------|-----------------|---------|
| • Black   | T460011 | • Light cyan    | T465011 |
| • Cyan    | T463011 | • Light magenta | T464011 |
| • Magenta | T462011 | • Yellow        | T461011 |

Before you start, make sure the printer is on. Then follow these steps to replace an ink cartridge:

1. Note the color of the Ink Out light that is on or flashing. This is the cartridge that you need to replace.
2. Open the ink compartment cover.

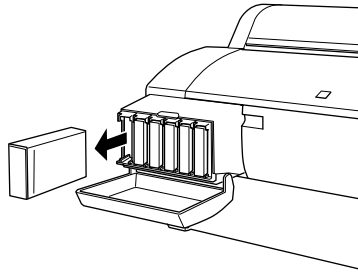


## 6-8 | Maintaining and Transporting the Printer



If ink gets on your hands, wash them thoroughly with soap and water. If ink gets into your eyes, flush them immediately with water.

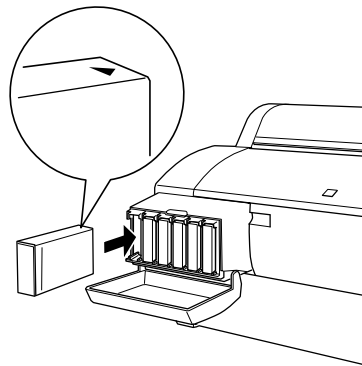
3. Locate the slot containing the empty ink cartridge (corresponding to the **Ink Out** light). Carefully pull the empty cartridge straight out of the printer.



4. Make sure the replacement cartridge is the correct color, and remove it from its package.
5. Hold the ink cartridge with the arrow mark face up and pointing to the rear of the printer. Then insert the ink cartridge into the slot until the corresponding **Ink Out** light goes off.



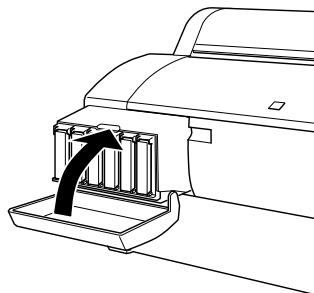
If you can't insert the cartridge smoothly, you may have the wrong cartridge. Check the package and product code.





If the **Ink Out** light remains on, the cartridge may not be installed correctly. Remove the cartridge and then reinsert it as described above.

6. Close the ink compartment cover.



## Replacing the Paper Cutter Blade

If you notice that your paper isn't cut cleanly, the cutter blade may need to be replaced. If you use the blade to cut heavy stock or non-EPSON media, you may need to replace it more often. You can also check the status of your cutter by printing the status check sheet or using the Printer Status menu on the control panel. See page 5-4 or 5-3 for instructions.

To obtain a new cutter blade (part number C815131), contact your dealer.

To replace the cutter blade, you first need to remove the used blade, as described in the following section.



Be careful not to cut yourself while replacing the paper cutter blade.

## Removing the Used Cutter Blade

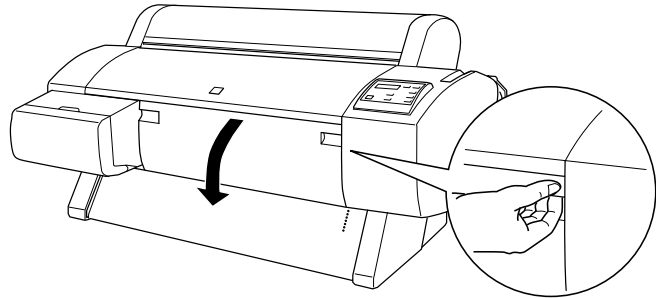
Make sure the printer is on, then follow these steps to remove the blade:

1. Press the **SelecType** button repeatedly until **CUTTER REPLACE MENU** appears on the display.
2. Press the **Item** button. **CUT. REPLACE=EXEC.** appears on the display.
3. Press the **Enter** button. The paper cutter holder moves to the replacement position.

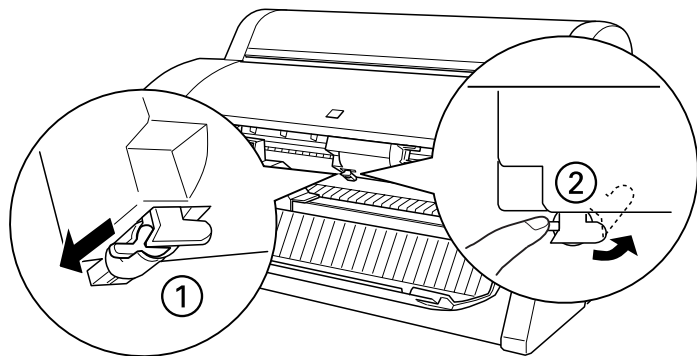


To avoid damaging your printer, never move the paper cutter holder by hand.

4. When the holder stops moving and **OPEN LOWER COVER** appears on the display, open the lower cover by pulling down on the handles.



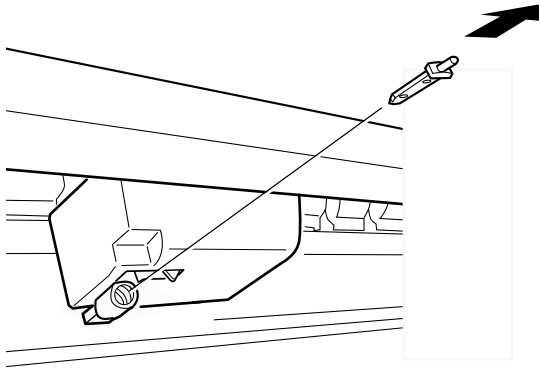
5. When **REPLACE CUTTER** appears on the display, you can open the casing. Push in the side pin while turning the paper cutter cover to the right.



Be careful not to let the cutter or the spring coil pop out of the casing.

6. Slowly take your finger off the side pin. The paper cutter raises so it can be removed.

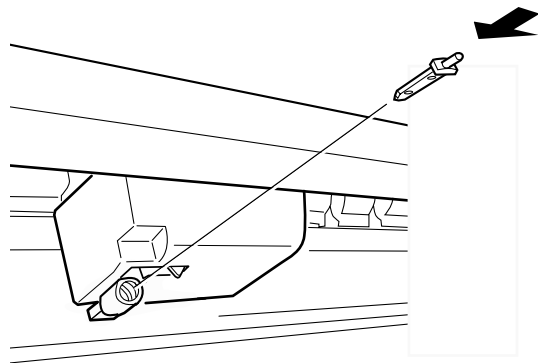
7. Carefully remove the cutter blade from the printer.



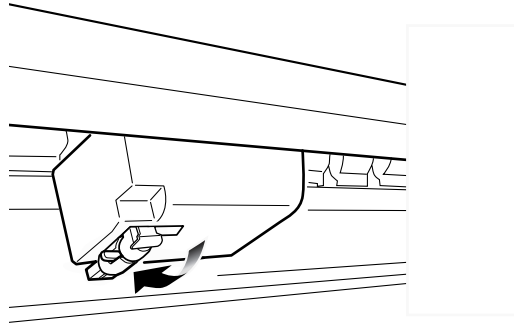
### Installing the New Cutter Blade

After you have removed the used cutter blade, you're ready to install the new one. Follow these steps:

1. Remove the new blade from its package.
2. Make sure the spring coil is inside the cutter holder. If necessary, reinstall the coil.
3. Fully insert the new blade into the paper cutter holder in the direction shown below.



4. Push in the side pin while turning the paper cutter cover to the left to close the casing. **CLOSE LOWER COVER** appears on the display.



5. Close the lower cover. The cutter holder moves to the home (far right) position and **READY** appears on the display.

After you replace the cutter blade, the print head nozzles may be clogged. Run a nozzle check and cleaning cycle if necessary.

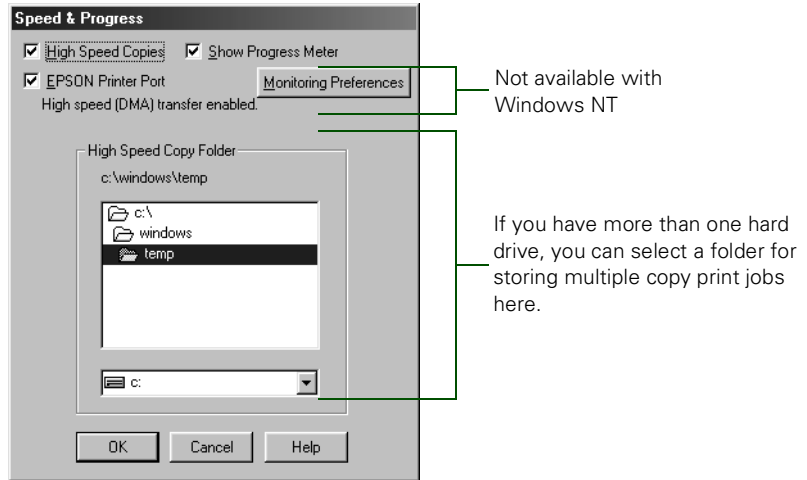
## Running the Speed and Progress Utility for Improved Windows Printing

With this utility, you can speed up the way your printer driver processes multiple-copy print jobs, optimize your printer port for the fastest data transfer rate, and configure the progress meter.

To access the Speed & Progress dialog box, you must open your printer software from the Windows Printers utility as described below.

1. Click **Start**, point to **Settings**, then click **Printers**.
2. Right-click your printer icon and select **Properties** (Windows 95 and 98) or **Document Defaults** (Windows NT) from the menu.
3. Click the **Utility** tab. You see the Utility menu.
4. Click the **Speed & Progress** button.

You see the Speed and Progress dialog box:



5. Select from the following options:

- **High Speed Copies** speeds up printing of multiple copies of the same document using hard disk space as a cache. If you have multiple hard drives, you can select a high speed copy folder for storing copies.
- **Show Progress Meter** lets you control whether or not the Progress Meter is displayed when you send a print job.
- **EPSON Printer Port** (not available with Windows NT 4.0) lets you optimize the transfer rate of your printer port for EPSON printers instead of using the Windows default printer port. You may see one of these messages beneath the **EPSON Printer Port** option:



Note

If you're using Windows NT, you may be able to improve printing speed by configuring your parallel port. For more information, see "Using Port Configuration" in your electronic *Reference Guide*.

**High speed (DMA) transfer enabled** tells you that you're already using fast DMA transfer mode.

**For higher data transfer rates, use DMA transfer** lets you know that you can speed up printing by enabling DMA transfers on your system. See your electronic *Reference Guide* for instructions on using DMA transfers, if your computer supports them. For more information, see your computer documentation or contact your computer manufacturer's technical support.

If you see no message, you cannot enable DMA transfers on your system.



Be careful not to touch the gears inside the printer.

To avoid damaging the components as well as the case, never use alcohol or thinners to clean the printer.

Be careful not to get water on the printer mechanism or electronic components.

Don't use a hard or abrasive brush.

Don't spray the inside of the printer with lubricants; unsuitable oils can damage the mechanism. Contact your dealer or a qualified servicer if your printer needs lubrication.

6. Click OK to close the Speed & Progress dialog box and return to the Utility menu. Then click OK again to exit the Printers utility.

## Cleaning the Printer

To keep your printer working at its best, you should clean it thoroughly several times a year.

1. Make sure the printer is turned off and all the lights on the control panel are off. Then unplug the power cord.
2. Open the roll paper cover and remove the roll paper spindle. Remove any paper or other media from the printer.
3. Make sure the ink cartridge compartment is closed. Then use a soft brush to carefully clean away any dust or dirt.
4. Open the lower cover and use a soft brush to carefully clean away any dust or dirt inside the lower cover. Then close the cover.
5. If you're using the printer stand, first remove the paper hammock. Then clean away any dust or dirt around the stand using a soft brush.
6. If the outer case is dirty, clean it with a soft, clean cloth dampened with mild detergent. Keep the ink cartridge compartment closed to prevent water from getting inside.
7. If the area under the roll paper cover accidentally gets soiled with ink, wipe it off with a damp cloth.
8. To wash the paper hammock, remove the shafts, then machine wash with mild detergent and air dry.

## Transporting the Printer

When you need to ship your printer, you should repack it using the original box and packing materials. Follow these steps to prepare the printer for transport:



To avoid spilling ink inside the printer during transportation, make sure you remove the cartridges and follow these instructions for draining the ink lines.

1. Make sure the printer is turned on. Then remove all ink cartridges as described on page 6-8.

2. Make sure the paper set lever is in the secured position and the lower cover is closed. Then press the **Power** button to turn off the printer.

The print head moves to the home (far right) position. **TRANSPORT PREP <number> %** appears on the display and the **Operate** light flashes for a few minutes while the ink is drained. Then the light goes off and the printer shuts down.

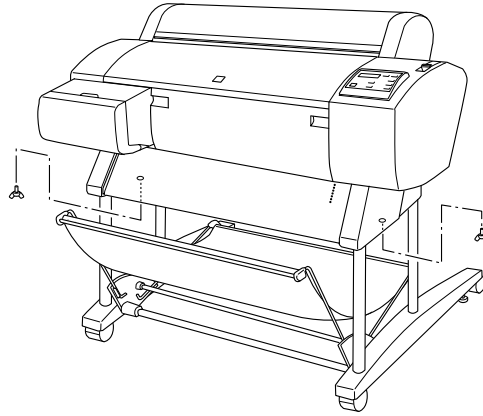
3. Remove the following parts:

- Power cord
- Interface cable
- Roll paper spindle
- All paper or other media

Push in the paper guides if necessary.

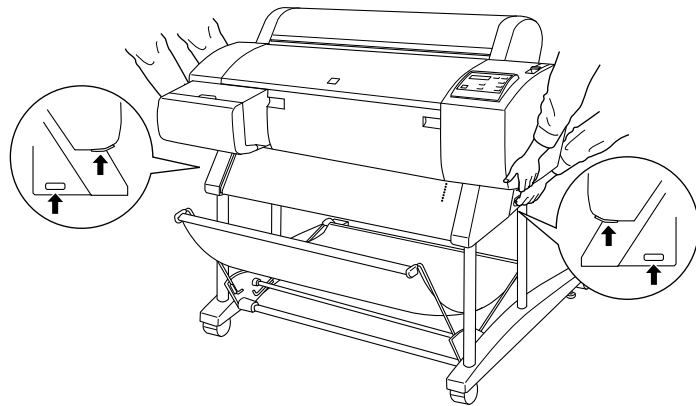
4. Install the carriage shipping restraint (packaging material).

5. If you're using the stand, remove the wing screws and washers from the left and right sides, and keep them in a safe place.



The printer weighs approximately 96 lb (43.5 kg). Always have two or more people lift it, using the hand grip areas as shown.

6. Have two or more people lift the printer off the stand, using the hand grips.



7. Keep the printer level while you move it.

## Setting Up the Printer After Transporting It

Setting up the printer after transporting it is almost identical to setting it up for the first time. Whenever you set up the printer, see the *Assembly and Setup Instructions*.

EPSON recommends installing new cartridges after transporting the printer. Because of the ink charging process, you will not be able to save ink by reinstalling used cartridges.

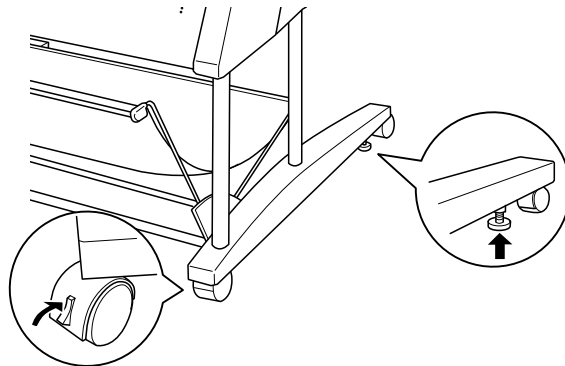
## Moving the Printer on the Stand

If you're using the printer stand and you need to move the printer a short distance, such as within the same building or facility, you can roll the printer on its casters. Follow these steps:



Do not roll the printer on angled or uneven surfaces.

1. Make sure that the power cord, interface cable, roll paper spindle and paper are removed, and the roll paper cover and lower cover are closed. You don't need to remove the ink cartridges.
2. Release the front casters and retract the stabilizer knobs.



3. Carefully roll the printer to its new location. Relock the casters and extend the stabilizer knobs after moving.

The first time you start printing after moving the printer, the print head nozzles may be clogged. You may need to run a cleaning cycle (see page 6-2) and realign the print head (see page 6-3) to ensure good print quality.

## Replacing the Waste Ink System

Approximately every two years (or after 12000 A1-size prints), you must have your authorized EPSON servicer replace the waste ink system. This is necessary to prevent damage to the print head and maintain print quality. Parts and labor for this service are not covered under the terms of the limited warranty.

You can monitor the status of the waste ink system through the control panel (see page 5-3) or through the Ink Pad number displayed on the nozzle check print (see page 6-1).

The printer will display the following message on the control panel when the waste ink system is almost full:

**MAINTENANCE REQ. 0100**

You should call to schedule service at this point. When the waste ink system is at full capacity, the printer will stop and display the following message:

**SERVICE REQ. 00000100**

## Chapter 7: Resolving Problems

As you use your printer, you may occasionally experience a problem. The first thing you should do is diagnose the problem following the guidelines in this chapter. Then try the most likely solutions until the problem is fixed.

This chapter provides instructions for the following:

- Diagnosing problems
- Using hex dump mode
- Improving print quality
- Solving operational problems
- Solving miscellaneous printing problems
- Solving paper problems
- Solving USB problems

### Diagnosing Problems

The EPSON Stylus Pro 7000 includes a number of ways to help you diagnose problems:

- To identify the most common problems, check the messages and lights on the printer's control panel. See page 5-5 for more information.
- If you're using the EPSON printer driver and Monitor3 (Macintosh) or Status Monitor 3 (Windows) utility, check your software for error messages. See page 5-7 or page 5-10 for more information.
- If you have the RIP Station 5100, check for error messages on the RIP control panel and in the Fiery Spooler or Web Spooler utilities. See the RIP Station 5100 *User Guide* for more information. (The RIP Station 5100 *User Guide* also includes troubleshooting guidelines.)
- To determine whether the problem is caused by the printer itself, disconnect the printer from the RIP and run a status check. See page 5-4 for instructions.
- You can use the printer's hex dump mode to pinpoint communication problems. Then you can fax the printout to a technical support representative or interpret it yourself. See the following section for instructions.

- If none of the suggested solutions in this chapter solve your problem, contact EPSON as described under “Where To Get Help” in the Introduction.

### Using Hex Dump Mode

You can use the printer’s hex dump mode to identify problems if you know how to interpret hex code. Or, you can fax the hex printout to a technical support representative.

Make sure the printer has paper loaded and is turned off. Then follow these steps:

1. Press and hold the **Pause** button while you press the **Power** button to turn on the printer. **HEX DUMP=PRINT** appears on the display.
2. Press the **Enter** button.
3. Send your problem file to the printer.

The data in the print buffer is printed with 16-byte hex data in the left column and corresponding ASCII characters in the right column. If the last data is less than 16 bytes, you need to press the **Pause** button to print it.

4. After you’re finished using hex dump mode, press the **Power** button to turn the printer off and exit maintenance mode.

### Improving Print Quality

You can often improve print quality by doing the following:

- Run a nozzle check and cleaning cycle. See page 6-1 for instructions.
- Align the print head. See page 6-3 for instructions.
- When you send a print job, make sure your print options are set correctly. For more information, see Chapter 3 or 4 if you’re using the EPSON printer driver or the RIP Station 5100 *User Guide* (if you have the RIP).

If none of these suggestions help, try the solutions on the following page.

*Print quality problems*

<b>Problem</b>	<b>Possible cause</b>	<b>Solution</b>
Your print has horizontal banding.	Print options are set incorrectly for the media you're using.	Make sure the <b>Print Mode</b> or <b>Media Type</b> setting is correct for the media you're printing on.
	You're printing on the wrong side of the paper or other media.	If you're using roll paper, make sure it's correctly attached to the spindle. See page 2-3 for instructions. If you're using a cut sheet, make sure the printable side is face up.
	Print head nozzles are clogged.	Run a nozzle check and cleaning cycle (page 6-1).
	Your ink supply is low or too old.	Check the <b>Ink Out</b> lights and replace ink cartridges if necessary, as described on page 6-7.
Your print has vertical misalignment or banding.	The print head is out of alignment.	Align the print head, as described on page 6-3.
	If you're using the EPSON driver, the <b>High Speed</b> setting is selected.	Turn off the <b>High Speed</b> setting. See Chapter 3 or 4 for instructions.
Colors are incorrect or missing.	Print options are set incorrectly for the media you're using.	Make sure the <b>Print Mode</b> or <b>Media Type</b> setting is correct for the media you're printing on.
	You're printing on the wrong side of the paper or other media.	If you're using roll paper, make sure it's correctly attached to the spindle. See page 2-3 for instructions. If you're using a cut sheet, make sure the printable side is face up.
	Print head nozzles are clogged.	Run a nozzle check and cleaning cycle (page 6-1).
	The color settings in your application or print options are incorrect.	Make sure your color settings are correct.
Your print has gaps or appears faint.	Your ink is too old.	Check the expiration date printed on each cartridge. If the cartridge is too old, replace it as described on page 6-7.
	Print options are set incorrectly for the media you're using.	Make sure the <b>Print Mode</b> or <b>Media Type</b> setting is correct for the media you're printing on.
	Print head nozzles are clogged.	Run a nozzle check and cleaning cycle (page 6-1).
	Your ink supply is low.	Check the <b>Ink Out</b> lights and replace ink cartridges if necessary, as described on page 6-7.
	The paper configuration setting is too thick.	Use the control panel to select thinner paper. See page 2-21 for instructions.
	The platen gap setting is too wide.	Use the control panel to change the setting from <b>WIDE</b> to <b>AUTO</b> . See page 2-18 for instructions.

## 7-4 | Resolving Problems

### *Print quality problems (continued)*

<b>Problem</b>	<b>Possible cause</b>	<b>Solution</b>
Your print appears blurry or smeared.	Print options are set incorrectly for the media you're using.	Make sure the <b>Print Mode</b> or <b>Media Type</b> setting is correct for the media you're printing on.
	You're using the wrong paper configuration setting (for non-EPSON media).	Use the control panel to register and select your paper thickness and dry time. See page 2-21 for instructions. If you're using the RIP, you can set dry time between passes in seconds.
	Your paper doesn't meet the required specifications or contains too much moisture.	Change your paper.
	You're printing on the wrong side of the paper or other media.	If you're using roll paper, make sure it's correctly attached to the spindle. See page 2-3 for instructions. If you're using a cut sheet, make sure the printable side is face up.
	Ink has leaked in the paper path.	Wipe the paper path area of the printer with a soft, clean cloth. See page 6-14 for cleaning instructions.
	You're using high speed (bi-directional) printing.	Turn off the <b>High Speed</b> or <b>Bi-Directional</b> setting in your Print Options.
	Print head nozzles are clogged.	Run a nozzle check and cleaning cycle (page 6-1).
	The paper configuration setting is too thin.	Use the control panel to select thicker paper. See page 2-21 for instructions.
The platen gap setting is too narrow.	Use the control panel to change the setting from <b>AUTO</b> to <b>WIDE</b> . See page 2-18 for instructions.	

## Solving Operational Problems

If you can't turn the printer on, if it stops printing unexpectedly, or if nothing prints, check the following:

- The printer is turned on and the **Operate** light is on.
- The printer is plugged securely into a working electrical outlet that's not controlled by a switch or timer.
- If you're using the RIP Station 5100, make sure the interface cable is securely connected to the printer and RIP and the RIP is turned on. Check the RIP Station 5100 *User Guide* for additional troubleshooting solutions.

If none of these suggestions help, try the solutions below:

### *Operational problems*

<b>Problem</b>	<b>Possible cause</b>	<b>Solution</b>
The printer stops printing unexpectedly.	If the <b>Pause</b> light is flashing, the printer is performing a maintenance procedure or waiting for ink to dry.	Check the display message and lights on the control panel. Wait until the <b>Pause</b> light stops flashing.
	An error has occurred.	Check the display message and lights on the control panel. Follow the instructions for the message on page 5-5.
The printer sounds like it's printing, but nothing prints.	Print head nozzles are clogged.	Run a nozzle check and cleaning cycle (page 6-1).

## 7-6 | Resolving Problems

### *Operational problems (continued)*

<b>Problem</b>	<b>Possible cause</b>	<b>Solution</b>
Nothing prints.	The printer is not connected correctly.	Turn off the printer and RIP or computer. Make sure the interface cable is securely plugged in.
		Make sure the interface cable meets the required specifications. See Chapter 1 in this guide or the RIP Station 5100 <i>Getting Started</i> guide.
		If you're not using a RIP, make sure the interface cable is directly connected to the computer without passing through a printer switching device, Zip™ drive, or extension cable.
		If you are using Windows NT 4.0, try uninstalling the EPSON printer port. Click <b>Start</b> , point to <b>Programs</b> and <b>EPSON Printers</b> , then click <b>EPSON Printer Port Uninstall</b> . Follow the messages on the screen.
	Your PPD (PostScript printer description) and/or printer driver software are not set up correctly.	Make sure your software is installed correctly and the RIP or printer is selected.
	The printer port setting doesn't match the printer connection port (Windows).	Click <b>Start</b> , point to <b>Settings</b> and select <b>Printers</b> . Right-click <b>your printer icon</b> , then select <b>Properties</b> . Click the <b>Details</b> tab.  Make sure your printer driver is selected in the <b>Print using the following driver</b> list. Then select the port to which your printer is connected in the <b>Print to the following port</b> list.
	The printer driver doesn't have enough available memory (Macintosh).	To increase the available memory in your Macintosh, select <b>Control Panel</b> from the Apple® menu and double-click the <b>Memory</b> icon. You can increase the size of virtual memory to increase total available memory. Also, quit all unnecessary applications.

## Solving Miscellaneous Printing Problems

If your printouts are not what you expected, try the suggestions below:

### *Miscellaneous printing problems*

<b>Problem</b>	<b>Possible cause</b>	<b>Solution</b>
Your print has incorrect or garbled characters.	Your PPD and/or printer driver software are not set up correctly or not selected.	Make sure your software is installed correctly and the RIP or printer is selected.
	You have stalled print jobs.	Clear any stalled print jobs from Monitor3 (Macintosh) or the Progress Meter or Spool Manager (Windows).
	The printer is not connected correctly.	Turn off the printer and RIP or computer. Make sure the interface cable is securely plugged in at both ends.  If you are using Windows NT 4.0, try uninstalling the EPSON printer port. Click <b>Start</b> , point to <b>Programs</b> and <b>EPSON Printers</b> , then click <b>EPSON Printer Port Uninstall</b> . Follow the messages on the screen.
Your print has incorrect margins.	Page size or paper size are not set correctly in your application.	Check the settings in your application. Make sure they are within the printer's printable area.
	Paper size is not set correctly in your print options.	Make sure the <b>Paper Size</b> setting in your print options is correct for the paper you're using.
	Paper is loaded incorrectly.	Reload paper, aligning it correctly with the row of holes in the printer. See Chapter 2 for instructions.
	The <b>ROLL MARG</b> (roll paper margin) setting on the control panel is incorrect.	If you're using roll paper, check the setting for <b>ROLL MARG</b> on the Printer Setting Menu. See page 2-12 for more information.
Your image is inverted.	The <b>Flip Horizontal</b> or <b>Print as a mirror image</b> setting is selected in your print options.	Turn off the setting. See your RIP Station 5100 <i>User Guide</i> or page 3-7 (Macintosh) or 4-8 (Windows) in this manual for instructions.

## 7-8 | Resolving Problems

### *Miscellaneous printing problems (continued)*

<b>Problem</b>	<b>Possible cause</b>	<b>Solution</b>
Blank paper is printed.	Your PPD and/or printer driver software are not set up correctly or not selected.	Make sure your software is installed correctly and the RIP or printer is selected.
	Paper size is not set correctly in your print options.	Make sure the <b>Paper Size</b> setting in your print options is correct for the paper you're using.
	You have selected <b>Sheet</b> , but you're using roll paper.	Make sure your paper settings are correct.
A ruled line on your print appears to shift.	The print head is out of alignment.	Align the print head as described on page 6-5.
The bottom edge of your print is smeared.	The paper is curled toward the printable side.	Flatten the paper or curl it toward the other side.
	Print options are set incorrectly for the media you're using (for EPSON media).	Make sure the <b>Print Mode</b> or <b>Media Type</b> setting is correct for the media you're printing on.
	You're using the wrong paper configuration setting (for non-EPSON media).	Use the control panel to register and select your paper thickness. See page 2-21 for instructions.
	The platen gap setting is too narrow.	Use the control panel to change the setting from <b>AUTO</b> to <b>WIDE</b> . See page 2-18 for instructions.
Color images print in black only.	Your PPD and/or printer driver software are not set up correctly or not selected.	Make sure your software is installed correctly and the RIP or printer is selected.
	Black printing is selected in your print options.	Make sure color printing is selected.
The printer continues to feed paper after you have cancelled a print job.	The printer still has information about the print job in its buffer.	Press the <b>Pause</b> button on the printer. If you're using the RIP, wait until it is idle. Then press and hold the <b>Pause</b> button to reset the printer.

*Miscellaneous printing problems (continued)*

<b>Problem</b>	<b>Possible cause</b>	<b>Solution</b>
Printing is too slow.	The resolution or print quality setting in your print options is too high.	Choose a lower resolution for faster printing.
	Your system doesn't have enough resources.	Clear space on your hard drive or run a defragmentation utility.
		Don't run too many applications at the same time.
		Turn off virtual memory.
You're using background printing on a Macintosh.		Add RAM to your system.
		If you're using the EPSON driver, select EPSON Monitor3 and increase its memory requirements.
You're not using ECP or Enhanced mode and/or DMA transfers (in Windows).		Turn off background printing.
		If your computer supports ECP or Enhanced mode and/or DMA transfers, turn them on to speed up printing. See your computer documentation and page 6-13 for more information.

## Solving Paper Problems

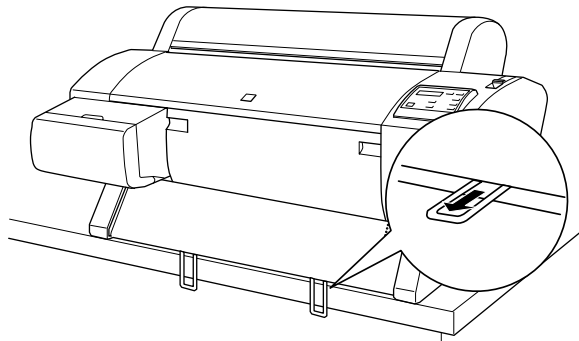
If paper feed or paper jam problems occur frequently, try one or more of the following solutions:

- When you're loading roll paper, make sure you line up the edge with the row of holes on the printer. Always turn the roll back to remove the slack. See page 2-10 for more information.
- If you're not using a roll of paper that's installed in the printer, secure it with the roll paper belt. See page 2-7 for more information.
- Make sure the paper is not folded, wrinkled, or damp.
- Make sure the printer's environment falls within the required temperature and humidity range.
- Make sure the paper is not too thick or too thin. See pages 2-1 and 8-2 for paper specifications.
- Make sure no foreign objects are inside the printer.

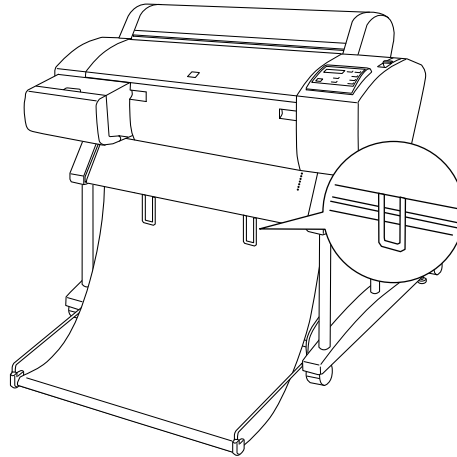
- Make sure the printer is not located in a brightly lit area. The paper sensor may not be able to operate correctly.
- Make sure the **Print Mode** or **Media Type** setting is correct for the media you're printing on.
- Make sure the platen gap setting is correct for the paper or media you're printing on. See page 2-18 for more information.
- If you're not using EPSON media, make sure you register and select your paper's thickness. See page 2-21 for more information.

### **Solving Roll Paper Ejection Problems**

If you are using the printer without the stand, tightly wound roll paper may feed out with a curl. Extend the paper guides as shown below:



If you're using the printer stand, set the paper hammock in front of the printer and extend the paper guides as shown:

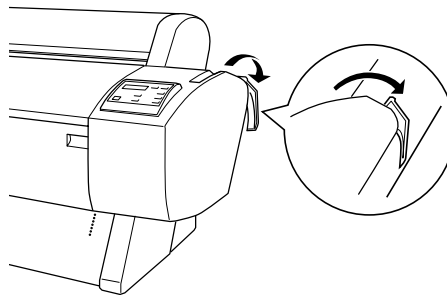


## Clearing Paper Jams

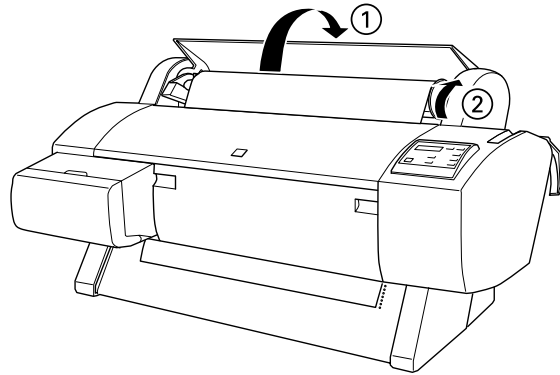
When paper gets jammed in the printer, printing stops and you see a **PAPER JAM** message on the control panel display. Follow these steps to clear paper jams:

1. If roll paper is jammed, cut it by hand at the paper slot.
2. Make sure the **Operate** light and **Pause** light are not flashing, then push the paper set lever all the way down to release the jammed paper.

Pull down the jammed paper.



3. Open the roll paper cover and rewind the paper using the paper stop on the right. Carefully pull down the jammed paper.



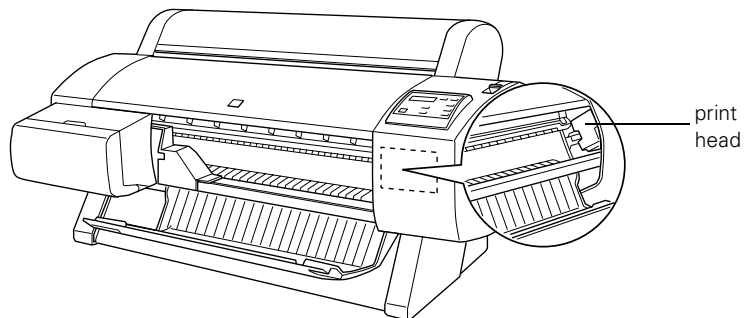
4. When **TURN PWR OFF AND ON** is displayed on the control panel, close the lower cover, if necessary, then press the **Power** button to turn the printer off. Press it again to turn the printer back on.
5. Make sure the **Paper Out** light is on and **LOAD PAPER** is displayed on the control panel. Then reload your paper.

When you're not printing on roll paper, make sure you secure the roll with the roll paper belt. See page 2-7 for more information.



If the print head is not left in the home position, print quality may decline.

6. If you're not going to continue printing, make sure the print head is in the home (far right) position, as shown below. If it's not, turn the printer on, wait until the print head moves to the home position, then turn off the printer.



## Solving Windows USB Problems

A Windows system connected directly to the printer's USB port must have a "clean" installation of Windows 98 or Windows 2000. You may not be able to install or run the USB printer driver on a computer that has been upgraded from Windows 95.

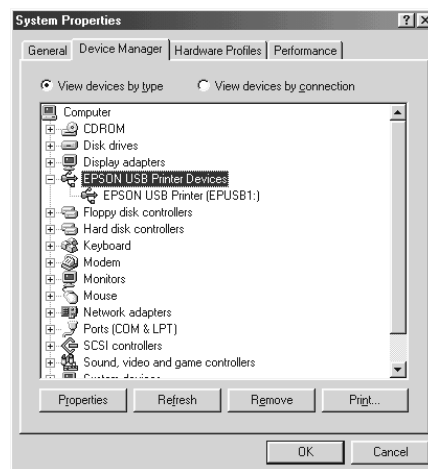
For details about your computer, contact your dealer.

## Checking Your USB Driver Installation

If you cancelled the plug-and-play driver installation before the procedure was completed, either the USB printer device driver or the printer driver may be installed incorrectly. Follow these steps to check the installation and reinstall the drivers if necessary:

1. Turn the printer on. Plug the USB cable into the printer and the computer.
2. Right-click the **My Computer** icon on your desktop, then click **Properties**.
3. Click the **Device Manager** tab.

If your drivers are correctly installed, **EPSON USB Printer Devices** should appear in the Device Manager list.

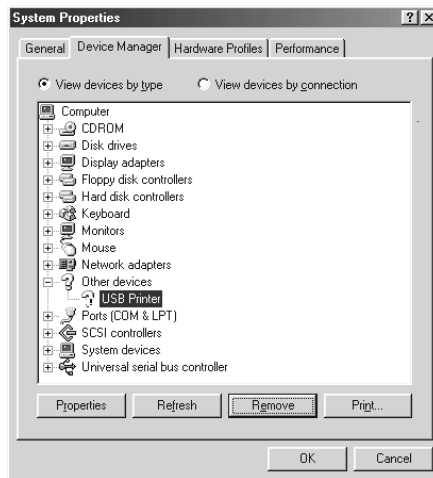


If **EPSON USB Printer Devices** does not appear in the Device Manager, click the plus (+) sign beside **Other devices** to view the installed devices.

If **USB Printer** appears under **Other devices**, the USB printer device driver is not installed correctly. If **EPSON Stylus Pro 7000** appears, the printer driver is not installed correctly.

If neither **USB Printer** nor your printer model appears under **Other devices**, click **Refresh** or unplug the USB cable from the printer, then plug it in again.

4. Under **Other devices**, select **USB Printer** or your printer model, then click **Remove** and click **OK**.



5. When the following dialog box appears, click **OK**. Then click **OK** to close the Properties window.



6. Unplug the USB cable from the printer, then follow the instructions on page 1-10 to reinstall the printer driver.

## Solving USB Cable Problems

If your printer does not work correctly with a USB cable, try one or more of these solutions:

- Make sure you are using the recommended USB cable as described on page 1-5.
- Make sure the **PARA. I/F** setting is **COMPAT**. You can change this setting using the printer's control panel, as described on page A-3. If this problem still occurs, turn the printer off and back on.
- If you're using a USB hub, connect the printer to the first tier of the hub, or connect the printer to the computer's USB port directly.
- For Windows systems, try reinstalling the USB printer device driver and the printer software. First, uninstall **EPSON Printer Software** using the Add/Remove Programs utility in the Windows Control Panel, then uninstall **EPSON USB Printer Devices**. Next, reinstall the software, following the steps on page 1-10. If **EPSON USB Printer Devices** is not registered in the Add/Remove Programs list, access the CD-ROM and double-click **Win 9X\epusbun.exe**. Then follow the on-screen instructions.
- For Macintosh, you may need to upgrade to System 9.



## Chapter 8: Specifications

### Printing

<b>Printing method</b>	On-demand ink jet
<b>Nozzle configuration</b>	Black: 64 nozzles Color: 64 nozzles for each color (cyan, magenta, yellow, light cyan, light magenta)
<b>Printable columns</b>	
Character mode	10 characters per inch, 237 columns
Raster graphics mode	360 dpi: 8,561 available dots 720 dpi: 17,123 available dots 1440 dpi: 34,246 available dots
<b>Maximum printable width</b>	23.78 inches on 24-inch paper
<b>Maximum resolution</b>	1440 dpi × 720 dpi
<b>Engine reliability</b>	
Engine life	20,000 A1 images, 30% coverage (or 5 years)
Print head life	Two billion dots per nozzle
Periodic maintenance	Waste ink system requires replacement after approximately 12,000 sheets (parts and labor not covered under warranty)
Cutter blade life	Approximately 2000 A1 sheets (EPSON media up to 0.11 mm thick)
<b>Print direction</b>	Bidirectional or unidirectional (user-selectable)
<b>Control code</b>	ESC/P® Raster
<b>Line spacing</b>	1/6 inch or programmable in 1/360-inch increments
<b>Paper feed speed</b>	200 ± 10 milliseconds per 1/6-inch line
<b>RAM</b>	10MB
<b>Character sets</b>	EPSON Courier 10 characters per inch

## Paper

### *Cut sheet paper specifications*

Size	Dimensions in inches (approximate)	Dimensions in millimeters	Thickness
Super A1	24 × 36	610 × 914	0.08 to 0.5 mm
US D	22 × 34	559 × 864	
A1	23.4 × 33	594 × 841	
B2	20.25 × 28.7	515 × 728	0.08 to 1.5 mm
A2	16.5 × 23.4	420 × 594	
Super A3/B	13 × 19	329 × 483	
US C	17 × 22	432 × 559	
B3	13.9 × 20.25	364 × 515	
US B (ledger)	11 × 17	279 × 432	
A3	11.7 × 16.5	297 × 420	
B4	9.8 × 13.9	250 × 353	
A4	8.25 × 11.7	210 × 297	
Letter	8.5 × 11	216 × 279	
B5	6.9 × 9.8	176 × 250	

### *Roll paper specifications*

	Maximum roll diameter	Width	Thickness
With standard 2-inch spindle or optional 3-inch spindle	5.90 in. (150 mm)	8.27 to 24 in. (210 to 610 mm)	0.08 to 0.5 mm

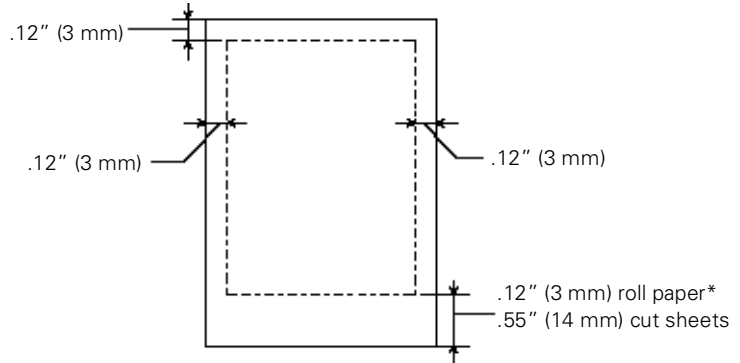
Depending on the media, best feed and print quality are guaranteed on EPSON paper with thicknesses of 0.08 to 0.11 mm.

Poor quality paper may reduce print quality and cause paper jams or other problems. If you encounter problems, switch to a higher grade of paper.

Do not load curled, folded, or deckle-edge paper.

## Printable Area

Maximum width 23.78 inches. Minimum margins for roll paper and sheets:



\* Default roll paper top and bottom margins are .59 inches (15 mm). You can set all margins to .12 inches (3 mm) or .59 inches (15 mm) using the control panel. See page 2-12 for instructions.

## Environmental

	Operation	Storage	Transit (stored in shipping container)
Temperature	50 to 95 °F (10 to 35 °C)	-4 to 104 °F (-20 to 40 °C) (1 month at 104 °F)	-4 to 140 °F (-20 to 60 °C) (120 hours at 140 °F)
Humidity (without condensation)	20 to 80% RH	20 to 85% RH	5 to 85% RH

## Mechanical

Height	22.05 inches (560 mm)
Width	43.31 inches (1100 mm)
Depth	22.52 inches (572 mm)
Weight	95.8 lb (43.5 kg), without ink cartridges or stand
Paper feed method	Friction feed (roll paper and cut sheets)
Paper path	Roll paper or cut sheets with manual insertion

## Electrical

	120 V model	220/240 V model
Input voltage range	90 to 132 V	198 to 264 V
Rated frequency range	50 to 60 Hz	50 to 60 Hz
Input frequency range	49 to 61 Hz	49 to 61 Hz
Rated current	1.0 A	0.5 A
Power consumption	Approx. 100 W (ISO 10561 letter pattern) 15W or less in standby mode	

Check the label on the back of the printer for voltage information.

## Initialization

Hardware initialization at power on:

- The printer mechanism is set to its initial state.
- The input data buffer and print buffer are cleared.
- The printer returns to the last default settings.

Software initialization when the ESC@ (initialize the printer) command is received:

- The print buffer is cleared.
- The printer returns to the last default settings.

Panel button initialization by pressing the **Pause** button on the control panel for 3 seconds or more:

- The print head is capped.
- Any paper in the printer is ejected.
- The input data buffer and print buffer are cleared.
- The printer returns to the last default settings.

## Safety Approvals

**Safety standards**      UL 1950, CSA 22.2 No. 950

**EMC**                      FCC part 15 subpart B class B, CSA C108.8 class B

## Ink Cartridges

<b>Print capacity</b>	Approx. 28 pages/A1 (720 dpi, 40% duty) Approx. 3,800 pages/A4 (360 dpi, 5% duty)
<b>Cartridge life</b>	2 years from production date
<b>Temperature</b>	
Storage (uninstalled)	-22 to 104 °F (-30 to 40 °C) 1 month at 104 °F
Storage (installed)	-4 to 104 °F (-20 to 40 °C) 1 month at 104 °F
Transit	-22 to 140 °F (-30 to 60 °C) 1 month at 104 °F, 120 hours at 140 °F
Freezing	14 °F (-10 °C); ink thaws and is usable after at least 3 hours at 77°F (25 °C)
<b>Dimensions</b>	
Width	0.99 in. (25.1 mm)
Depth	5.6 in. (141.1 mm)
Height	4.15 in. (105.3 mm)
<b>Weight</b>	Approximately 0.44 lb (200 g)
<b>Capacity</b>	3.7 oz (110 ml)

Print yield may vary, depending on how often you run print head cleaning cycles and how much you use the printer. Yield of the initial cartridge set is reduced because of ink charging.

## Parallel Interface

### Forward Channel

Data format	8-bit parallel, IEEE-1284 compatibility mode
Synchronization	$\overline{\text{STROBE}}$ pulse
Handshake timing	BUSY and $\overline{\text{ACKNLG}}$ signals
Signal level	TTL compatible
Connector	57-30360 Amphenol connector or equivalent

### Reverse Channel

Transmission mode	IEEE-1284 Nibble mode
Adaptable connector	57-30360 Amphenol connector or equivalent
Synchronization	Refer to the IEEE-1284 specification
Handshaking	Refer to the IEEE-1284 specification
Signal level	IEEE-1284 Level 1 device
Data transmission timing	Refer to the IEEE-1284 specification

### ECP Mode

Transmission mode	IEEE-1284 ECP mode
Adaptable connector	57-30360 Amphenol connector or equivalent
Synchronization	Refer to the IEEE-1284 specification
Handshaking	Refer to the IEEE-1284 specification
Signal level	IEEE-1284 Level 1 device
Data transmission timing	Refer to the IEEE-1284 specification

## USB Interface

Standard	Based on Universal Serial Bus Specifications Revision 1.0, Universal Serial Bus Device Class Definition for Printing Devices Version 1.0
Bit rate	12 Mbps (full speed device)
Data encoding	NRZI
Adaptable connector	USB Series B
Recommended cable length	6 feet (2 meters)



## Appendix A: Configuring the Printer

You can use the SelecType menus on the printer's control panel to configure printer settings (as well as check the printer and perform maintenance operations.) The following table lists the menus, their functions, and where to find additional information:

### *SelecType menus*

<b>Menu</b>	<b>Description</b>	<b>For more information, see page</b>
Printer Setting	Configure the printer	2-12, 2-18
Test Print	Print a nozzle check or status check	6-1, 5-4
Printer Status	Check ink levels and component life	5-3
Paper Configuration	Register paper thickness and drying time, and select registered configurations	2-21
Cutter Replacement	Replace the paper cutter blade	6-9
Head Alignment	Align the print head	6-5

This chapter describes the following configuration settings:

- Selecting the printer's interface
- Configuring the parallel interface
- Changing the printer's code page setting
- Setting the control panel language
- Restoring default settings

## Selecting the Printer's Interface

The printer includes both a parallel and USB interface. You can also install an optional interface board for networking or additional connectivity. By default, the printer automatically switches to whichever interface is receiving data.

You can use the control panel to select an individual interface for sending data to the printer. Follow these steps:

1. Press the **SelecType** button. **PRINTER SETTING MENU** appears on the display.
2. Press the **Item** button repeatedly until **INTERFACE=AUTO\*** appears on the display. This is the default setting.
  - Press the **+** button once to select the parallel interface. **INTERFACE=PARA./USB** appears on the display.
  - Continue pressing the **+** button to select the **OPTION** (optional) interface.

You can use the **+** or **-** button to cycle through all three settings.

3. When you have selected the setting you want, press the **Enter** button to save it.
4. Press the **SelecType** button to exit the Printer Setting menu.

## Configuring the Parallel Interface

You can use the control panel to change the parallel interface to ECP mode for faster printing. To use this mode, you must connect a computer directly to the printer's parallel interface (without a RIP), and the computer must support ECP mode. See your computer's documentation for more information.



If you experience any problems using ECP mode, switch back to compatible mode. For USB connection, use compatible mode.

Follow these steps to configure the parallel interface:

1. Press the **SelecType** button. **PRINTER SETTING MENU** appears on the display.
2. Press the **Item** button repeatedly until **PARA. I/F=COMPAT\*** appears on the display. This indicates that compatible mode (the default) is selected.
3. Press the **+** button. **PARA. I/F=ECP** appears on the display. This sets the parallel interface to ECP mode.
4. Press the **Enter** button to save your setting.
5. Press the **SelecType** button to exit the Printer Setting menu.

## Changing the Printer's Code Page Setting

The printer uses the PC437 code page (U.S. and standard European character sets) by default. You can use the control panel to change it to the PC850 code page (multilingual character sets) if necessary. Follow these steps:

1. Press the **SelecType** button. **PRINTER SETTING MENU** appears on the display.
2. Press the **Item** button repeatedly until **CODE PAGE=PC437\*** appears on the display.
3. Press the **+** button. **CODE PAGE=PC850** appears on the display.
4. Press the **Enter** button to save your setting.
5. Press the **SelecType** button to exit the Printer Setting menu.

## Setting the Control Panel Language

All control panel messages are displayed in English. However, you can use a special printer maintenance mode to change to any of the following languages:

- French
- Italian
- German
- Spanish
- Portuguese

Make sure the printer is turned off, then follow these steps to change the language for control panel messages:

1. Press and hold the **Pause** button while you press the **Power** button to turn on the printer. **HEX DUMP=PRINT** appears on the display.
2. Press the **Item** button until **LANGUAGE=ENGLISH\*** is displayed.
3. Press the **+** or **-** button until the language you want is displayed.
4. Press the **Enter** button to select the language.
5. Press the **Power** button to turn the printer off and exit maintenance mode.

## Restoring Default Settings

You can erase all **SelecType** settings you have made and restore them to their default values. Follow these steps:

1. Press the **SelecType** button. **PRINTER SETTING MENU** appears on the display.
2. Press the **Item** button repeatedly until **INIT. PANEL=EXEC.** appears.
3. Press the **Enter** button to erase all settings and restore the defaults.
4. Press the **SelecType** button to exit the Printer Setting menu.

# Index

## A

Accessories, purchasing, 5  
Aligning print head, 6-3 to 6-6  
AppleTalk setting, 1-7 to 1-9  
Auto Cut setting, 2-8, 3-2, 4-6  
Auto Rotate setting, 3-2, 4-6

## B

Background printing, Macintosh,  
3-9 to 3-12  
Backlight Film, 2-2, 3-5, 3-7, 4-4, 4-8  
Banding, 7-3  
Basic printing  
Macintosh, 3-3 to 3-5  
Windows, 4-1 to 4-3  
Basket, paper, *see* Hammock, paper  
Belt, roll paper, 2-7  
Blank pages, 7-8  
Blurry prints, 7-4  
Buttons, control panel, 2-10,  
5-1 to 5-4, A-1 to A-4

## C

Cable problems, 7-6, 7-7, 7-15  
Canceling print jobs  
control panel, 5-2  
Macintosh, 3-11, 3-12  
Windows, 4-11  
Cartridges, *see* Ink cartridges  
Casters, 6-17  
Checking, 1-12  
Chooser, selecting printer, 1-7  
Cleaner (cleaning unit), 5-3  
Cleaning  
paper hammock, 6-14  
print head, 6-2 to 6-3  
printer, 6-14  
Cleaning button, 6-2, 6-3  
Cleaning cycle, running, 6-2 to 6-3  
Code page setting, A-3

## Color management

Macintosh, 3-4, 3-7 to 3-9  
Windows, 4-8 to 4-10  
Color problems, 7-3, 7-8  
ColorSync settings, 3-7 to 3-9  
Configuration settings, Macintosh,  
5-9  
Configuring printer, A-1 to A-4  
Contrast, 3-8  
Control panel  
buttons, 2-10, 5-1 to 5-4,  
A-1 to A-4  
configuring printer, A-1 to A-4  
default settings, 2-12, A-1 to A-4  
language, setting, A-4  
lights, 5-2, 5-5 to 5-7  
menus, A-1  
messages, 5-2, 5-5 to 5-7  
monitoring printer, 5-1 to 5-7  
CR motor (carriage motor), 5-3  
Cut sheet paper  
heavy stock, 2-16 to 2-18  
loading, 2-13 to 2-16  
printable area, 8-3  
Cut/Eject button, 2-11  
Cutter Replace menu, 6-9  
Cutter, replacing blade, 6-9 to 6-12

## D

Data transfer, optimizing,  
6-12 to 6-14  
Declaration of Conformity, iii  
Default settings, 2-12, A-1 to A-4  
Deleting print jobs  
Macintosh, 3-11, 3-12  
Windows, 4-11  
Diagnosing problems, 7-1 to 7-2  
Dimensions of printer, 8-3  
DMA transfers, 6-13  
Documentation, how to use, 2 to 4

## Drivers

- Macintosh, 1-7 to 1-9, 3-1 to 3-9
- Windows, 1-10 to 1-12,  
4-1 to 4-10

Drying time setting, 2-21 to 2-22

## E

- ECP mode, 8-6, A-3
- Electrical specifications, 8-4
- Energy consumption, 8-4
- ENERGY STAR, 5
- Engine reliability, 8-1
- Environmental specifications, 8-3

## EPSON

- Accessories, 5
  - help, 4 to 5
  - Internet FTP Site, 5
  - paper and film, 2-1 to 2-3, 3-5, 4-4
  - Preferred Protection Plan, 4
  - printer port, 6-13, 7-7
  - Web site, 5
- EpsonNet Internal Print Server,  
installing, 1-1 to 1-4
- Error messages, 5-5 to 5-7
- Error notification, 5-9
- Ethernet card, installing, 1-1 to 1-4

## F

- Faint prints, 7-3
- Film, 2-2, 3-5, 4-4
- FireWire card, installing, 1-1 to 1-4
- Firmware version, 5-3
- Flip Horizontal setting, 3-7, 4-8, 7-7
- FTP site, EPSON, 5

## G

- Gamma setting, 3-8, 4-9
- Graph setting, 3-4, 4-3

## H

- Hammock, paper, 2-19 to 2-20
- Head Alignment menu, 6-5 to 6-6
- Head alignment, *see* Print head,  
aligning
- Head unit (print head), 5-3
- Heavy stock, 2-16 to 2-18
- Height of printer, 8-3
- Help, EPSON, 4 to 5
- Hex dump mode, 7-2
- High Speed copies, 5-9, 6-13
- High Speed setting, 3-7, 4-8
- Humidity requirements, 8-3

## I

- ICM setting, 4-3, 4-9
- Initialization, 8-4
- Ink
  - absorbing pad, 5-3
  - monitoring level, 5-3, 5-7 to 5-12
  - valve locks, 7-5
- Ink cartridges
  - ordering, 6-7
  - removing for transportation, 6-15
  - replacing, 6-7 to 6-9
  - safety instructions, 7 to 8
  - specifications, 8-5
- Ink Out light(s), 5-5 to 5-6
- Interface card, installing, 1-1 to 1-4
- Interface, *see* Parallel interface, USB  
interface
- Internet, 5
- Item button, 5-3

## L

- Language, control panel, A-4
- Lights, control panel, 5-2, 5-5 to 5-7

**M**

## Macintosh

- advanced print options, 3-6 to 3-9
- background printing, 3-9 to 3-12
- basic print options, 3-3
- color management, 3-7 to 3-9
- ColorSync settings, 3-7 to 3-9
- configuration settings, 5-9
- connecting printer, 1-5
- custom print job settings, 3-4
- drivers, 3-1 to 3-9
- installing software, 1-7 to 1-9
- managing print jobs, 3-9 to 3-12
- Monitor3, 3-10 to 3-12
- monitoring printer, 5-7 to 5-9
- page setup options, 3-1
- selecting printer in chooser, 1-7
- sharing printer, 1-8 to 1-9
- Status Monitor, 5-7 to 5-9
- system requirements, 1-7
- Utility menu, 5-7, 6-1 to 6-3

## Maintenance, 6-1 to 6-14

## Maintenance mode, 7-2, A-4

## Manuals, how to use, 2 to 4

## Margins

- incorrect, 7-7
- minimum, 8-3
- setting default, 2-12

## Mechanical specifications, 8-3

## Media Type setting, 3-5, 4-4

## Memory

- problems, 7-6
- specifications, 8-1

## Menus, SelecType, A-1

Menus, SelecType, *see also* SelecType menus

## Messages

- error, 5-5 to 5-7
- status, 5-2

## MicroWeave setting, 3-7, 4-8

## Monitor3, 3-10 to 3-12

## Monitoring printer

- control panel, 5-1 to 5-7
- Macintosh, 5-7 to 5-9
- Windows, 5-10 to 5-12

## Motors, 5-3

## Moving printer, 6-15 to 6-17

**N**

## Network, sharing printer on

- Macintosh, 1-8 to 1-9
- Windows, 1-12 to 1-17

## Nozzle check, 6-1 to 6-2

**O**

## Operate light, 2-8, 2-15, 5-2

## Optimizing data transfer, 6-12 to 6-14

**P**

## Page count, 5-3, 8-1

## Page Line setting, 2-8, 2-12, 3-2, 4-6

## Paper

- attaching to spindle, 2-3 to 2-4
- configurations settings, 2-21 to 2-22, 7-3
- cut sheet, 2-13 to 2-18
- cutting manually, 2-11
- drying time setting, 2-21 to 2-22
- EPSON, 2-1 to 2-3, 3-5, 4-4
- hammock, 2-19 to 2-20
- handling, 2-1 to 2-22
- heavy stock, 2-16 to 2-18
- inserting the spindle, 2-5 to 2-7
- jams, 7-11 to 7-12
- loading for printing, 2-7 to 2-11
- loading sheets, 2-13 to 2-16
- non-EPSON, 2-21 to 2-22
- options, Macintosh, 3-1
- options, Windows, 4-5 to 4-6
- printable area, 8-3

- Paper (*continued*)
  - problems, 7-9 to 7-12
  - registering, 2-21 to 2-22
  - removing from spindle, 2-4
  - roll, 2-3 to 2-12
  - selecting registered, 2-22
  - setting default margins, 2-12
  - sizes, 2-1, 8-2
  - specifications, 8-2
  - spindle, 2-3 to 2-7
  - suction setting, 2-21 to 2-22
  - thickness setting, 2-21 to 2-22
  - trim lines, 2-12, 3-2, 4-6
  - uneven edge, 2-10
- Paper basket, *see* Paper hammock
- Paper Config. menu, 2-21, 2-22
- Paper cutter, replacing blade,
  - 6-9 to 6-12
- Paper Feed buttons, 2-11
- Paper feed speed, 8-1
- Paper guides, 7-10 to 7-11
- Paper hammock, 2-19 to 2-20
- Paper Out light, 5-5 to 5-6
- Paper set lever, 2-8, 2-10, 2-13 to 2-16
- Paper Size setting, 3-1, 4-5, 7-7
- Paper Source setting, 3-2, 4-5
- Parallel interface
  - configuring, A-2 to A-3
  - connecting to, 1-6
  - problems, 7-6, 7-7
  - specifications, 8-6
- Pause button, 2-10, 2-14, 2-16, 2-17
- Pause light, 5-2, 5-5
- Pausing print jobs
  - control panel, 5-2
  - Macintosh, 3-11
  - Windows, 4-11
- PF motor (paper feed motor), 5-3
- Photoshop color management setting,
  - 3-4, 4-9
- Platen gap setting, 2-18, 7-3
- Poster board, 2-2, 2-16 to 2-18, 3-5,
  - 4-4
- Power consumption, 8-4
- Print head
  - aligning, 6-3 to 6-6
  - checking status, 5-3, 6-1 to 6-3
  - cleaning, 6-2 to 6-3
  - service life, 8-1
- Print jobs
  - canceling, 3-11, 3-12, 4-11, 5-2
  - custom settings, 3-4, 4-3
  - managing, 3-9 to 3-12,
    - 4-10 to 4-11
  - pausing, 3-11, 4-11, 5-2
  - stalled, 7-7
- Print quality, 7-2 to 7-4
- Print server, installing internal,
  - 1-1 to 1-4
- Print time, setting, 3-9 to 3-12
- Printer
  - checking status, 5-1 to 5-12
  - cleaning, 6-14
  - code page setting, A-3
  - configuring, A-1 to A-4
  - connecting to Macintosh, 1-5
  - connecting to Windows computer,
    - 1-5 to 1-6
  - control panel language, A-4
  - default settings, A-4
  - dimensions, 8-3
  - firmware version, 5-3
  - initialization, 8-4
  - interface, selecting, A-2
  - maintaining, 6-1 to 6-14
  - maintenance mode, 7-2, A-4
  - monitoring, 5-1 to 5-12
  - motors, 5-3
  - moving, 6-15 to 6-17
  - page count, 5-3
  - parallel interface, configuring, A-3
  - pausing, 5-2
  - port, EPSON, 6-13, 7-6, 7-7
  - removing from stand, 6-16
  - resetting, 5-2
  - sharing, 1-8 to 1-9, 1-12 to 1-17
  - specifications, 8-1
  - total engine life, 8-1

Printer (*continued*)  
 transporting, 6-15 to 6-17  
 turning off, 6  
 weight, 8-3  
 Printer Color Management setting,  
 3-4  
 Printer port problems, 7-6, 7-7  
 Printer Setting menu, 2-12, 2-18,  
 A-1 to A-4  
 Printer Status menu, 5-3  
 Printing specifications, 8-1  
 Problems  
 banding, 7-3  
 blank paper, 7-8  
 blurry prints, 7-4  
 cable, 7-6, 7-7  
 color, 7-3, 7-8  
 diagnosing, 7-1 to 7-2  
 faint prints, 7-3  
 garbled characters, 7-7  
 inverted image, 7-7  
 margins, 7-7  
 memory, 7-6  
 misalignment, 7-3  
 nothing prints, 7-6  
 operational, 7-5 to 7-6  
 paper, 7-9 to 7-12  
 PPD, 7-6 to 7-8  
 print quality, 7-2 to 7-4  
 printer driver, 7-6 to 7-8  
 printer port, 7-6, 7-7  
 printer stops printing, 7-5  
 slow printing, 7-9  
 smeared prints, 7-8  
 USB, 7-13 to 7-15  
 Progress Meter, 4-10 to 4-11, 6-13

## R

RAM, *see* Memory  
 Registering non-EPSON media,  
 2-21 to 2-22  
 Resetting printer, 5-2

Resolution  
 Macintosh, 3-6  
 specifications, 8-1  
 Windows, 4-7  
 Roll Marg setting, 2-12, 7-7  
 Roll paper  
 attaching to spindle, 2-3 to 2-4  
 Auto Cut, 2-8, 3-2, 4-6  
 Auto Rotate, 3-2, 4-6  
 belt, 2-7  
 Cutter Off, 2-8  
 cutting manually, 2-11  
 feed problems, 7-9 to 7-12  
 inserting the spindle, 2-5 to 2-7  
 loading for printing, 2-7 to 2-11  
 Page Line setting, 2-8, 2-12, 3-2,  
 4-6  
 printable area, 8-3  
 removing from spindle, 2-4  
 Save Roll Paper setting, 3-2  
 setting default margins, 2-12  
 settings, Macintosh, 3-2  
 settings, Windows, 4-6  
 spindle, 2-3 to 2-7  
 trim lines, 2-8, 2-12, 3-2, 4-6

## S

Safety  
 approvals, 8-4  
 instructions, 6 to 8  
 Saturation setting, 3-9  
 Save Roll Paper setting, 3-2, 4-6  
 SelecType menus  
 Cutter Replace, 6-9  
 Head Alignment, 6-5 to 6-6  
 Paper Configuration, 2-21 to 2-22  
 Printer Setting, 2-12, 2-18,  
 A-1 to A-4  
 Printer Status, 5-3  
 Test Print, 5-4  
 Sharing printer  
 Macintosh, 1-8 to 1-9  
 Windows, 1-12 to 1-17

Slow printing, 7-9

Specifications

- electrical, 8-4
- environmental, 8-3
- initialization, 8-4
- ink cartridges, 8-5
- mechanical, 8-3
- paper, 8-2
- parallel interface, 8-6
- printable area, 8-3
- printing, 8-1
- USB interface, 8-7

Speed and Progress configuration

- utility, 6-12 to 6-14

Spindle, roll paper, 2-3 to 2-7

Spool folder, 5-9

Spool folders, 6-13

Spool Manager, 4-11

SRGB setting, 4-3, 4-9

Stabilizer knobs, 6-17

Stand, removing printer from, 6-16

Status check, 5-4

Status Monitor

- Macintosh, 5-7 to 5-9
- Windows, 5-10 to 5-12

Suction setting, 2-21 to 2-22

Support, EPSON, 4 to 5

System requirements

- Macintosh, 1-7
- Windows, 1-10

## T

Technical support, 4 to 5

Temperature requirements, 8-3

Test Print menu, 5-4, 6-1

Text/Graph setting, 3-4, 4-3

Thickness setting, 2-21 to 2-22

Transporting printer, 6-15 to 6-17

Trim lines, printing

- control panel, 2-8, 2-12
- Macintosh, 3-2
- Windows, 4-6

Troubleshooting, 7-1 to 7-15

## U

Unit ID number, 4

USB interface

- connecting to, 1-5
- problems, 1-12, 7-13 to 7-15
- specifications, 8-7

Utility menu

- Macintosh, 5-7, 6-1 to 6-3
- Windows, 5-10, 6-1 to 6-3

## W

Waste ink (waste ink system), 5-3, 8-1

Web site, EPSON, 5

Weight of printer, 8-3

Width of printer, 8-3

Windows

- advanced print options, 4-7 to 4-10
- basic print options, 4-1 to 4-3
- color management, 4-8 to 4-10
- connecting printer, 1-5 to 1-6
- custom print job settings, 4-3
- drivers, 4-1 to 4-10
- installing software, 1-10 to 1-12
- managing print jobs, 4-10 to 4-11
- monitoring printer, 5-10 to 5-12
- paper options, 4-5 to 4-6
- printer status, checking, 5-10 to 5-12
- sharing printer, 1-12 to 1-17
- Speed and Progress configuration utility, 6-12 to 6-14
- status alerts, 5-12
- Status Monitor 3, 5-10 to 5-12
- system requirements, 1-10
- Utility menu, 6-1 to 6-3



