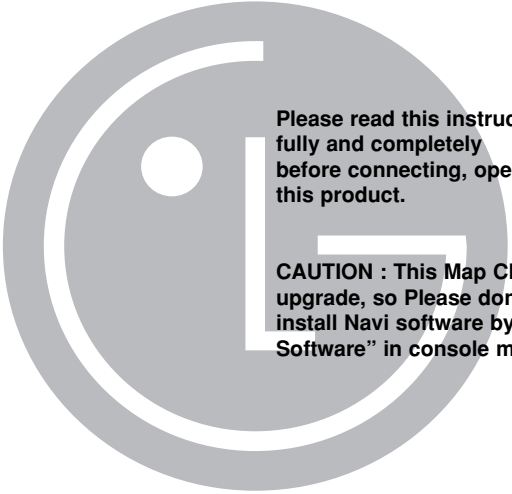




OWNER'S MANUAL

**MODEL: LND71ISSD
LND71PESD
LND71PECD
LND71WESD
LND71WECD
LND71ISCD
LND71SWCD**



Please read this instruction booklet carefully and completely before connecting, operating or adjusting this product.

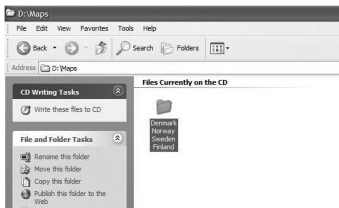
CAUTION : This Map CD is only for map upgrade, so Please don't use this CD to install Navi software by using "Install Software" in console menu.

This is available for LN700 Series and LN500 Series.

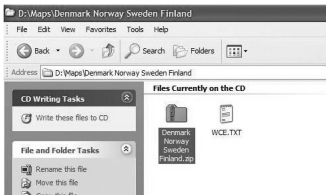
1. Insert a Map CD to a CD-ROM Drive.
2. Select a “Maps” folder in a CD file.



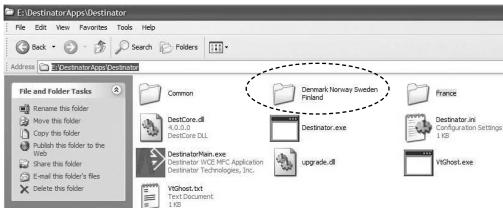
3. Select the map folder in the “Map” folder.
(Ex. : Demark Norway Sweden Finland)



4. Copy the same name of Zip file in the map folder at PC.



5. Unzip the folder first.
6. Copy the unzipped folder at the following location of SD card.



SD : DestinatorApps\Destinator

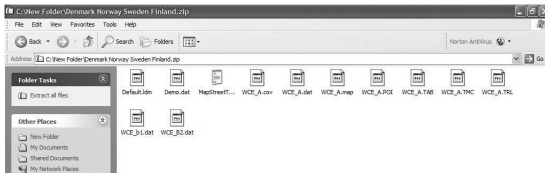
Note :


In order to change the same map that is currently using, delete the map you are using first.

Copy the Map from the CD at the SD card if you want to add the new map.

“Maps” folder is at the number 1, 2 and 3 CD if the CD is consisted in 3 CDs.

For your reference, contents of folder is as following.





This is available for LN700 Series and LN500 Series.

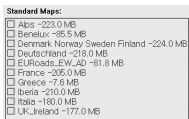
Installing the Console

1. Insert the Navigation Disc into the PC's CD-ROM drive. The Navigation Console Installation Wizard prompts you to select the language used for the installation process. When you have selected a language, click **OK**.
2. Please read the Welcome message and click Next.
3. From the Select Directory screen, either accept the recommended default directory or browse to a different directory to install the Navigation Console. Click **Next**.
4. From the Language screen, select the default language. Click **Next**.
5. The Installation Confirmation screen displays your installation choices. If you are ready to install, click **Next**. The Installation Status box displays the progress of the installation process.
by clicking LGE>Destinator Console from the Windows Programs menu.

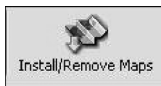
6. If you want to change the language selection or the directory location before installing, click **Back**, make your changes, and return to the Installation Confirmation screen, and click **Next**.
7. When the installation is complete, click the Finish button to close the wizard. You can open the console by clicking LGE>Destinator Console from the Windows Programs menu.

Transferring a Map onto the SD Memory Card

1. Connect the Card Reader to your PC using a USB cable.
2. Insert your SD card into the Card Reader.
3. Select the required maps (be aware of the size of your memory card). Click Change (bottom right) and select Removable Disk.



4. Click **Install/Remove Maps** on the toolbar.



5. Remove the SD card from the Card Reader and insert the SD card into the navigation device.

Note :

Although you can transfer a map directly to the SD card by connecting the navigation device to the PC via a USB cord, it is much faster to copy the map to the SD card by using the Card Reader. Transferring a map directly to the device should only be considered for extremely small map files.



P/NO : MFL37340852