



Color Video Camera Instruction Manual

Models: **LV300N-B**
LV300P-B



Before installing, operating or adjusting this product,
please read this instruction booklet carefully and completely.



CAUTION
RISK OF ELECTRIC SHOCK
DO NOT OPEN



**CAUTION: TO REDUCE THE RISK OF ELECTRIC SHOCK
DO NOT REMOVE COVER (OR BACK)
NO USER-SERVICEABLE PARTS INSIDE
REFER SERVICING TO QUALIFIED SERVICE PERSONNEL.**



This lightning flash with arrowhead symbol within an equilateral triangle is intended to alert the user to the presence of uninsulated dangerous voltage within the product's enclosure that may be of sufficient magnitude to constitute a risk of electric shock to persons.



The exclamation point within an equilateral triangle is intended to alert the user to the presence of important operating and maintenance (servicing) instructions in the literature accompanying the product.

WARNING: Do not install this equipment in a confined space such as a bookcase or similar unit.

WARNING: This is a class A product. In a domestic environment this product may cause radio interference in which case the user may be required to take adequate measures.

WARNING: Wiring methods shall be in accordance with the National Electric Code, ANSI/NFPA 70.

WARNING: To reduce a risk of fire or electric shock, do not expose this product to rain or moisture.

CAUTION: The apparatus should not be exposed to water (dripping or splashing) and no objects filled with liquids, such as vases, should be placed on the apparatus.

CAUTION: This installation should be made by a qualified service person and should conform to all local codes.

CAUTION: To avoid electrical shock, do not open the cabinet. Refer servicing to qualified personnel only.



Disposal of your old appliance

1. When this crossed-out wheeled bin symbol is attached to a product it means the product is covered by the European Directive 2002/96/EC.
2. All electrical and electronic products should be disposed of separately from the municipal waste stream via designated collection facilities appointed by the government or the local authorities.
3. The correct disposal of your old appliance will help prevent potential negative consequences for the environment and human health.
4. For more detailed information about disposal of your old appliance, please contact your city office, waste disposal service or the shop where you purchased the product.

FCC WARNING: This equipment may generate or use radio frequency energy. Changes or modifications to this equipment may cause harmful interference unless the modifications are expressly approved in the instruction manual. The user could lose the authority to operate this equipment if an unauthorized change or modification is made.

REGULATORY INFORMATION: FCC Part 15

This equipment has been tested and found to comply with the limits for a Class A digital device, pursuant to Part 15 of the FCC Rules. These limits are designed to provide reasonable protection against harmful interference when the equipment is operated in a commercial environment. This equipment generates, uses, and can radiate radio frequency energy and, if not installed and used in accordance with the instruction manual, may cause harmful interference to radio communications. Operation of this equipment in a residential area is likely to cause harmful interference in which case the user will be required to correct the interference at his own expense.

- A suitable conduit entries, knock-outs or glands shall be provided in the cable entries of this product in the end user.

- Caution: Danger of explosion if battery is incorrectly replaced. Replaced only with the same or equivalent type recommended by the manufacturer. Dispose of used batteries according to the manufacturer's instructions.
- Holes in metal, through which insulated wires pass, shall have smooth well rounded surfaces or shall be provided with brushings.

CE This product is manufactured to comply with the radio interference requirements of EEC DIRECTIVE 2004/108/EC and 2006/95/EC.

Important Safety Instructions

- 1. Read these instructions.** - All these safety and operating instructions should be read before the product is operated.
- 2. Keep these instructions.** - The safety, operating and use instructions should be retained for future reference.
- 3. Heed all warnings.** - All warnings on the product and in the operating instructions should be adhered to.
- 4. Follow all instructions.** - All operating and use instructions should be followed.
- 5. Do not use this apparatus near water.** - For example: near a bath tub, wash bowl, kitchen sink, laundry tub, in a wet basement; near a swimming pool; etc.
- 6. Clean only with dry cloth.** - Unplug this product from the wall outlet before cleaning. Do not use liquid cleaners.
- 7. Do not block any ventilation openings. Install in accordance with the manufacturer's instructions.** - Slots and openings in the cabinet are provided for ventilation, to ensure reliable operation of the product, and to protect it from over- heating. The openings should never be blocked by placing the product on a bed, sofa, rug or other similar surface. This product should not be placed in a built-in installation such as a book-case or rack unless proper ventilation is provided and the manufacturer's instructions have been adhered to.
- 8. Do not install near any heat sources such as radiators, heat registers, stoves, or other apparatus (including amplifiers) that produce heat.**

Important Safety Instructions

9. Do not defeat the safety purpose of the polarized or grounding-type plug. A polarized plug has two blades with one wider than the other. A grounding type plug has two blades and a third grounding prong. The wide blade or the third prong are provided for your safety. If the provided plug does not fit into your outlet, consult an electrician for replacement of the obsolete outlet.
10. Protect the power cord from being walked on or pinched particularly at plugs, convenience receptacles, and the point where they exit from the apparatus.
11. Only use attachments/accessories specified by the manufacturer.
12. Use only the cart, stand, tripod, bracket, or table specified by the manufacturer, or sold with apparatus. When a cart is used, use caution when moving the cart/apparatus combination to avoid injury from tip-over.



13. Unplug this apparatus during lightning storms or when unused for long periods of time.
14. Refer all servicing to qualified service personnel. Servicing is required when the apparatus has been damaged in any way, such as power-supply cord or plug is damaged, liquid has been spilled or objects have fallen into the apparatus, the apparatus has been exposed to rain or moisture, does not operate normally, or has been dropped.

Safety Precautions

Do not attempt to disassemble the camera

To prevent electric shock, do not remove screws or covers. There are no user serviceable parts inside. Ask a qualified service personnel for servicing.

Do not use strong solvents or detergents

Use a dry cloth to the camera when it is dirty. If it is hard to remove the dirt on the camera, use a mild detergent and wipe it gently.

Before operating, please check proper temperature, humidity and power source ratings.

Use the camera under conditions where temperature is between -10 °C to +50 °C.

Do not expose the camera in such conditions as shown below.

Use in a room or area filled with cigarette smoke, dust or gas.

Avoid the camera with direct sunlight

Do not aim the camera at bright objects. Never face it with direct sunlight or other extremely bright objects. Otherwise blooming or smear may be caused.

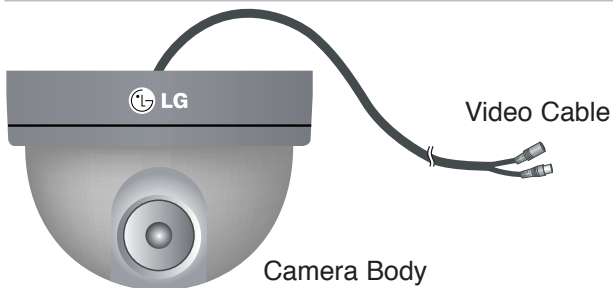
Handle the camera with care

Do not abuse the camera. Avoid striking, shaking, etc. The camera could be damaged by improper handling or storage.

Do not expose the camera to rain or moisture

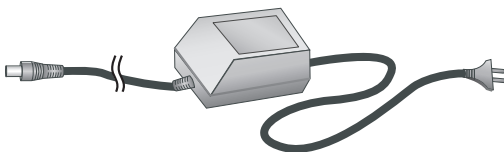
This product is designed for indoor use or location where it is protected from rain and moisture. When exposed to moisture, turn the power off immediately and ask a qualified service personnel for servicing. Moisture can damage the camera and also create the danger of electric shock.

What's in the box



M4 Tapping Screws (2 EA)
(Pan Lock Screw)

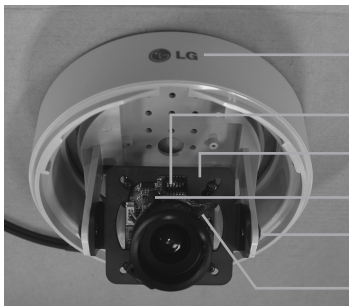
Optional



Adapter (DC 12 V, 300 mA)

Construction

Front View



Pan Base

6-pin Dip Switch

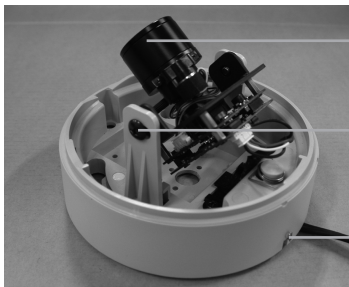
Tilt Base

Zoom Lever

Tilting Lock Screw

Focus Lever

Side View



Lens

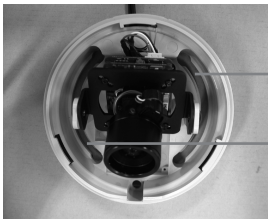
Tilting Lock Screw

Dome Cover Separatory Spring

Installation

Camera Installation

1. Aim the LG logo of the Dome Camera to face the place that you wish to watch.
2. Tighten the M4 Tapping Screws to fix the Dome Camera on the ceiling, then adjust the Pan (Left/Right) by moving the Pan Base. Tighten the M4 Tapping Screws after adjustment.
3. Loosen the Tilting Lock Screw. Adjust the Tilt (Up/Down) by moving the Tilt Base then tighten Tilting Lock Screw.
4. Set the Zoom Lever to a point between "Tele" and "Wide" to choose the desired angular field of view.
Set the Focus Lever to a point between "Near" and "Far" to choose the desired focus of view.
5. Install the Dome Cover to the main body by turning it counterclockwise to the end.



Hole for Fixing

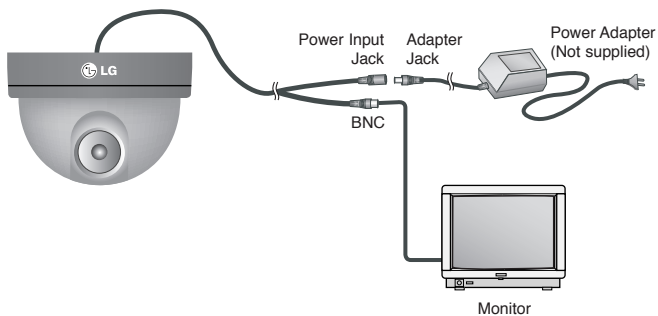
Notes

- When you install the camera, handle with care. The camera could be damaged by improper handling or storage.
- If this camera is mounted on the other places except ceiling, you need an extra bracket for mounting. (not supplied)

Installation

Camera Connection

Connect the Power Adapter (12 V, 300 mA; optional) to the Power Input Jack of the camera as shown below.



Installation

NOTES:

- When you disassemble the Dome Cover, lift the Dome Cover Separatory Spring on the opposite side of LG Logo and turn the Dome Cover clockwise simultaneously.

Dome Cover
Separatory Spring

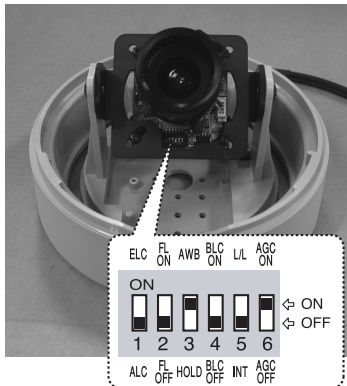


- When you install the camera, handle with care. The camera could be damaged by improper handling or storage.
- If this camera is mounted on the other places except ceiling, you need an extra bracket for mounting.(not supplied)

Setup

6-pin Dip Switch Setting

This camera has the 6-pin Dip Switch for setting.



- 1. ELC / ALC**
ELC (Electronic IRIS), ALC (Auto IRIS)
The default setting is ALC.
- 2. FL (Flickerless)**
Use for removing the flicker of picture.
The default setting is OFF.

- 3. AWB/HOLD**
AWB (Auto White Balance), HOLD (White Balance Hold).
The default setting is AWB.
- 4. BLC**
Backlight compensation eliminates strong background light which makes the camera picture dark such as a spotlight.
You can select the mode for adjusting the iris lens.
The default setting is OFF.
- 5. L/L**
Line-Lock mode, Internal Mode.
Line-Lock when using AC 24 V power.
The default setting is INT.
- 6. AGC (Auto Gain Control)**
If the image are too dark, change the maximum value to make the image lighter. The D&N function is activated automatically AGC ON mode.
The default setting is ON.

Troubleshooting

Check the following guide for the possible cause of a problem before contacting service.

The picture is poor

Does the Dome Cover have lots of dust on the surface?

- Use a dry cloth to clean the camera when it is dirty.

Smear may be caused to the screen of night than daytime.

- Adjust the Focus by moving the Focus Lens.

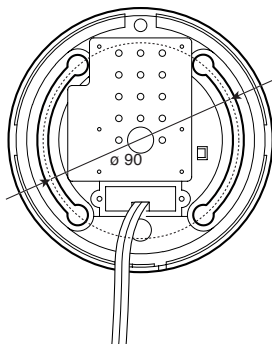
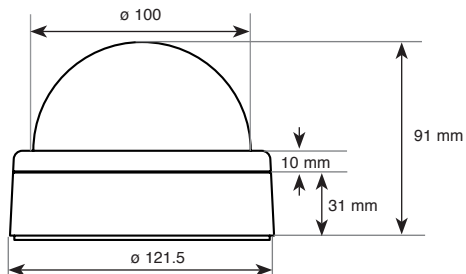
Contrast of the screen is not clear.

Check the condition of the monitor. A light source such as a spot light causes burn-in on the display screen. Adjust position or angle of the camera to eliminate strong background light.

Background screen appears white extremely.

You can set the background compensation to OFF.

Dimension



Specifications

Model	LV300N-B	LV300P-B
Signal System	NTSC	PAL
Total / Effective Pixels	410 K / 380 K	470 K / 440 K
Pick-Up Device	6 mm Interline Color CCD (Super HAD)	
Lens	Vari-Focal Lens (f=4.0 to 9.0 mm/F=1.6)	
Iris	DC Iris	
Signal Process	Digital Signal Process (SS11X)	
Scanning System	2 : 1 Interlace	
Sync. System	Internal	
Scanning Frequency	59.94 Hz(VD)	50 Hz(VD)
Resolution	520 TV Lines	
S/N Ratio	More than 48 dB	
Standard Illuminance	2 000 lx (3 200 K)	
Sensitivity (1/3 output)	0.5 lx (F1.2)	
Video Output Signal	1 Vp-p Composite (75 Ω)	
Gain Control	Auto	
Exposure	Automatic control with DC Iris motor	
Shutter Speed	1/60 to 1/100 000 s	1/50 to 1/100 000 s
White Balance	Auto	
Back Light	Compensation Auto / OFF	
Power Source	DC 12 V	
Power Consumption	Less than 2.3 W	
Operating Temp.	-10 °C to 50 °C (Humidity : 0 % RH to 80 % RH)	
Storage Temp.	-20 °C to 60 °C (Humidity : 0 % RH to 85 % RH)	
Net Weight	270 g	
Dimensions	ø 121.5 (Diameter) x 91 mm(H)	



P/NO: MFL40426626