



How to use SYNC® AppLink™



SYNC AppLink is an exclusive SYNC feature that provides you with voice control, steering wheel control or touchscreen control of some of your favorite mobile applications available through your smartphone. You can download the SYNC-compatible app to your phone, connect your phone to SYNC and enjoy the experience through your vehicle's audio system, anywhere you drive.

HOW TO GET STARTED

- Make sure you download and install the latest version of the app from your phone's app store.
- Some apps require you to register them before using them with AppLink.
- Make sure you start the app on your phone to understand how it functions.

PAIR YOUR PHONE BEFORE USING SYNC® APPLINK

Your smartphone must be connected (paired) to SYNC in order to use the AppLink service. Make sure the vehicle's ignition and radio are turned on and the transmission is in Park (automatic transmission) or neutral (manual transmission).

1. Press the phone button; when the display indicates no phone is paired, press OK.
2. When Add Bluetooth Device appears in the display, press OK.
3. When Find SYNC appears in the display, press OK.
4. Put your phone into Bluetooth discovery mode. Refer to your phone's user guide if necessary.
5. When prompted on your phone's display, enter the six-digit PIN provided by SYNC in the radio display.
6. The display indicates when the pairing is successful.
7. Depending on your phone's capability and your market, the system may prompt you with questions such as setting the current phone as primary phone (the phone SYNC automatically tries to connect with first upon vehicle start-up), downloading your phone book, etc.

Please see the **Tips For Using AppLink** section for system requirements



How to use Pandora® with SYNC® AppLink™

Currently for, Android™, BlackBerry® and iPhone®

Starting Pandora Using Voice Commands

1. Press the voice button on your audio system or steering wheel, and then say "Mobile apps". When SYNC is ready, it says "Mobile apps, please say a command".
2. Say "Pandora".
3. Music begins playing once the data arrives on your device.

Note: You may need to log into Pandora before you can listen to streaming music.

Starting Pandora Using the Radio Controls

1. Press the phone button on your audio system or steering wheel.
2. Browse to Mobile Applications, and then press OK. If your vehicle is equipped with a navigation system, you need to press the SYNC Apps tab, then Mobile Applications.
3. Select Pandora.

iPhone users

must also do the following:

1. Make sure the phone is connected via Bluetooth and the Apple-specific USB cable.
2. Pandora must be running on the phone.
3. Once Pandora is running, lock your phone by pressing the Sleep/Wake button.

Action	Voice Command	Radio or Steering Wheel Control
Pause the audio	Pause	Play/Pause (▶/) or OK
Resume play of paused audio	Resume	Play/Pause (▶/) or OK
Skip the current track	Skip	SEEK forward button (▶)
Display and read the current track information	Track Info	_____
List all of your saved stations	List My Stations	_____
'Thumbs Up' the current track	Thumbs Up	Hold SEEK forward (▶)
'Thumbs Down' the current track	Thumbs Down	Hold SEEK backward (◀)
Bookmark the current track	Bookmark	_____
Create a new station from the current track	Create Station from Track	_____
Create a new station from the current artist	Create Station from Artist	_____
Play a particular saved station	Play Station <Station Name>	_____
Play a station assigned to a preset	_____	Press the preset
Receive help with all available commands	Help	_____

Note

- Pandora automatically assigns your favorite radio stations to the radio presets in the order they appear in the station list in the phone app.
- You can only change the presets by changing the order of the station list in the phone app.



How to use Stitcher™ with SYNC® AppLink™

Currently for Android™ and iPhone®

Starting Stitcher Using Voice Commands

1. Press the voice button on your audio system or steering wheel, and then say "Mobile apps". When SYNC is ready, it says "Mobile apps, please say a command".
2. Say "Stitcher".
3. Music begins playing once the data arrives on your device.

Note: You may need to log into Stitcher before you can listen to streaming music.

Starting Stitcher Using the Radio Controls

1. Press the phone button on your audio system or steering wheel.
2. Browse to Mobile Applications, and then press OK. If your vehicle is equipped with a navigation system, you need to press the SYNC Apps tab, then Mobile Applications.
3. Select Stitcher.

iPhone users

must also do the following:

1. Make sure the phone is connected via Bluetooth and the Apple-specific USB cable.
2. Stitcher must be running on the phone.
3. Once Stitcher is running, lock your phone by pressing the Sleep/Wake button.

Action	Voice Command	Radio or Steering Wheel Control
Pause the audio	Pause	Play/Pause (▶/⏸) or OK
Play the audio	Play	Play/Pause (▶/⏸) or OK
Skip the current track	Skip or Next Show	SEEK forward (▶⏪)
Resume play of paused audio	Resume	Play/Pause (▶/⏸) or OK
Stop play of the audio	Stop	—————
'Thumbs Up' the current track	Thumbs Up	Hold the SEEK forward (▶⏪)
'Thumbs Down' the current track	Thumbs Down	Hold the SEEK backward (⏩◀)
Add station to your favorites	Add To Favorites	Hold one of the presets
Play podcasts from a particular station	Play Station <Station Name>	—————
Play your favorite station	Play Station Favorites	Press the preset
Save the current station as a preset	—————	Hold a preset
Receive help with all available commands	Help	—————

Note

- Only one station can be listed as a Favorite. Each time you mark a podcast as a favorite, it's added to your "Favorites" station. You can listen to your favorite podcasts by scrolling through your "Favorites" station.
- Stitcher automatically assigns your favorite stations to the radio presets in the order they appear in the station list in the phone app.
- You can press and hold the radio presets (except preset 1) to assign specific stations.



Stitcher Stations

For use with the voice command "Play Station <Station Name>"

General

Most Popular
 Nominees
 Recently Added
 Stitcher Tips for Android
 Stitcher's Picks
 Updated Hourly
 Weekend Favorites

Video Games

Magic: The Gathering
 Nintendo
 World of Warcraft
 Xbox

Genres

Alternative
 Blues
 Classical
 Electronica
 Heavy Metal
 Hip Hop
 Indie
 Jazz
 Punk
 Reggae

Country/City

Australia
 Boston
 Brazil
 Canada
 Chicago
 Chinese
 Czech Republic
 French
 German
 Ireland
 Italian
 Japanese
 Los Angeles
 Mexico

New York
 New Zealand
 Philadelphia
 San Francisco
 Spain
 United Kingdom

Sports

Baseball
 Basketball
 Big 10
 Big 12
 Big East
 Boxing
 Cycling
 Fantasy Football
 Fitness
 Football
 Golf
 Hockey
 Motor Sports
 Mountain West
 Pac 10
 Rugby
 Soccer
 Tennis
 Yoga

Mobile Technology

Android News
 Apple
 App Reviews
 Gadgets
 Media
 Open Source
 Software Development
 Tech Advice
 Technology News
 Virtualization

News

Art
 Astronomy
 Atheist
 Automotive Industry
 Aviation
 Baptist
 Beer
 Buddhism
 Business News
 Career Helper
 Catholicism
 Celebrities
 Christian News
 Christianity
 Comedy
 Comedy News
 Comic Books
 Conference USA
 Conservative
 Dating
 Educational
 Entrepreneurship
 Environmental News
 Food
 Food, Fall
 and Thanksgiving
 Fresh Air Station
 Gardening
 Geekazine Choice
 Podcasts
 Health
 History
 Holiday Station
 Holistic Health
 Horoscopes
 Investing
 Islam
 IT Professional
 Judaism
 Kid shows
 LGBT
 Liberal
 Literature

Lutheran
 Marketing
 Medical Professionals
 Methodist
 More Comedy
 Mormonism
 Movies
 Outdoors
 Paranormal
 Parenting
 Pets
 Photography
 Poetry
 Poker
 Presbyterian
 Public Radio
 Public Radio Comedy
 Reality TV
 Science
 Science Fiction
 SEC
 Stand-up
 Stock Market
 Storytelling
 TED
 Theatre
 Travel
 Vegetarian
 Wine
 Women
 World News



How to use iHeartRadio with SYNC® AppLink™

Currently for BlackBerry®

- **Make sure your phone is paired with SYNC. If not already paired, refer to your SYNC supplement for details on how to pair your phone to SYNC.**

Using iHeartRadio with SYNC AppLink

1. Press the **VOICE** button on your audio system and say **Mobile Apps**.
 - SYNC will respond with **Mobile Apps, please say a command**.
2. Say **iHeartRadio**.
3. Your music should begin playing once data arrives to your device.

Alternatively, you can also open iHeartRadio by using the radio controls.

1. Press the **PHONE** button.
2. Browse to **Mobile Applications** and press **OK**.
 - Navigation users will press the **SYNC Apps** tab, then **Mobile Applications**.
3. Select **iHeartRadio**.

Action	Voice Command	Radio or Steering Wheel Control
Pause the audio output	Pause	Play/Pause or OK button ►
Play the audio	Play	Play/Pause or OK button ►
Provides information on current songs, artist and station	What's Playing	_____
Change station within the current selection choice	Next Station	Hold the SEEK forward button ►►
Change station within the current selection choice	Previous Station	Hold the SEEK backward button ◀◀
Change station within the current selection choice	_____	Turn the TUNE knob
Add station to your favorites	Save Station or Add to Favorites	Hold one of the preset buttons
Play a station from your favorites list	Favorites	Press one of the preset buttons
Saves the song in your list of bookmarks	Bookmark Song or Bookmark	_____
Plays local stations based on your phone's GPS	Local	_____
Will prompt you to select a genre of music to listen to	Genre or Genres	_____
Will prompt you to select a city you want to listen to	City or Cities	_____
Loads and plays nationally syndicated stations	National	_____
Loads and plays celebrity-hosted stations	Personalities	_____
Traffic reports based on your phone's GPS - traffic reports may not exist in all regions	Traffic	_____
Receive help with all available commands	iHeartRadio Help	_____

Note

- iHeartRadio automatically assigns your favorite stations to the presets, in the order they appear in the app on the phone.
- However, users can override a pre-assigned preset by pressing and holding a preset button while listening to a different station than was assigned to that preset.



How to use iHeartRadio with SYNC® AppLink™

Currently for Android™ and iPhone®

Starting iHeartRadio Using Voice Commands

1. Press the voice button on your audio system or steering wheel, and then say "Mobile apps". When SYNC is ready, it says "Mobile apps, please say a command".
2. Say "iHeartRadio".
3. Music begins playing once the data arrives on your device.

Starting iHeartRadio Using the Radio Controls

1. Press the phone button on your audio system or steering wheel.
2. Browse to Mobile Applications, and then press OK. If your vehicle is equipped with a navigation system, you need to press the SYNC Apps tab, then Mobile Applications.
3. Select iHeartRadio.

iPhone users

must also do the following:

1. Make sure the phone is connected via Bluetooth and the Apple-specific USB cable.
2. iHeartRadio must be running on the phone.
3. Once iHeartRadio is running, lock your phone by pressing the Sleep/Wake button.

Action	Voice Command	Radio or Steering Wheel Control
Load and play local radio stations	Local Stations /Local	_____
Prompts to select one of your stations	My Stations	_____
Select personalities, commercial free, or genres	Music/Entertainment/ Music/ Entertainment	_____
Select news & talk, public radio, or sports	Talk Radio / Talk Stations	_____
Select state, then city	Station by City / By City / Cities	_____
Provides the current artist and song information	Now Playing	_____
Play station assigned to that preset	_____	Press a preset button
Save the currently playing station to a preset	_____	Hold a preset button

While Playing Custom Radio:		
Resume audio	Play	Play/Pause (▶/) or OK
Pause audio	Pause	Play/Pause (▶/) or OK
Play less familiar artists and songs	More Discovery	_____
Play more familiar artists and songs	Less Discovery	_____
Create a new station based on the currently playing song	Create Station	_____
Add the current station to "My stations"	Save Station	_____
Play the next song	Next / Next Song / Skip Song / Skip	Press SEEK forward (▶)
"Thumb Up" the current song	Thumb Up / Thumbs Up / Like	Hold SEEK forward (▶)
"Thumb down" the current song	Thumb Down / Thumbs Down / Don't Like	Hold SEEK backward (◀)
Change the currently playing station	_____	Tune



How to use iHeartRadio with SYNC® AppLink™

Currently for Android™ and iPhone®

While Playing Live Radio:		
Action	Voice Command	Radio or Steering Wheel Control
Mute audio	Stop	_____
Listen to a new set of stations based on the current playing station	Recommend Station	_____
Add the current station to "My stations"	Save Station	_____
Change the currently playing station	_____	Tune
Skip to the next station within the current category	_____	Press SEEK forward (▶▶)
Skip to the previous station within the current category	_____	Press SEEK backward (◀◀)

Note

- iHeartRadio automatically assigns your "My Stations" choices to the radio presets.
- You can override a preset station by pressing and holding the preset button while listening to the station that was assigned that preset.

iHeartRadio Stations

Genres

80s & 90s Hits	Christian & Gospel	Dance	Mix & Variety	Soft Rock
Alternative	Classic Rock	Hip Hop and R&B	Oldies	Spanish
Artist-Hosted Stations	Classical	Holiday	Personalities	Top 40 & Pop
	Comedy	Jazz	Reggae & Island	
	Country		Rock	

States

Alabama	Florida	Maryland	New Jersey	Rhode Island
Alaska	Georgia	Massachusetts	New Mexico	South Carolina
Arizona	Hawaii	Michigan	New York	Tennessee
Arkansas	Illinois	Minnesota	North Carolina	Texas
California	Indiana	Mississippi	North Dakota	Utah
Colorado	Iowa	Missouri	Ohio	Virginia
Connecticut	Kansas	Nebraska	Oklahoma	Washington
Delaware	Kentucky	Nevada	Oregon	West Virginia
District of Columbia	Louisiana	New Hampshire	Pennsylvania	Wisconsin

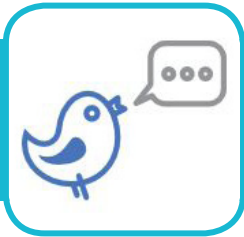


iHeartRadio Stations

Continued

Cities

Akron, OH	Charlotte, NC	Fayetteville, AR	Lancaster, CA	Monterey, CA
Albany, GA	Chattanooga, TN	Florida Keys, FL	Las Vegas, NV	Montgomery, AL
Albany, NY	Chicago, IL	Fort Collins, CO	Laurel, MS	Nashville, TN
Albuquerque, NM	Chillicothe, OH	Fort Myers, FL	Lexington, KY	New Haven, CT
Allentown, PA	Cincinnati, OH	Fort Smith, AR	Lima, OH	New Orleans, LA
Anchorage, AK	Cleveland, OH	Frederick, MD	Little Rock, AR	New York, NY
Asheville, NC	Colorado Springs, CO	Fresno, CA	Long Island, NY	Norfolk, VA
Atlanta, GA	Columbia, SC	Gadsden, AL	Los Angeles, CA	Ogallala, NE
Augusta, GA	Columbus, GA	Gallup, NM	Louisville, KY	Oklahoma City, OK
Austin, TX	Columbus, OH	Grand Forks, ND	Macon, GA	Omaha, NE
Bakersfield, CA	Corpus Christi, TX	Grand Rapids, MI	Madison, WI	Orlando, FL
Baltimore, MD	Dallas, TX	Greensboro, NC	Manchester, NH	Panama City, FL
Baton Rouge, LA	Davenport, IA	Greenville, SC	Mansfield, OH	Parkersburg, WV
Beaumont, TX	Dayton, OH	Harrisburg, PA	Marion, OH	Philadelphia, PA
Biloxi, MS	Defiance, OH	Harrisonburg, VA	McAllen, TX	Phoenix, AZ
Binghamton, NY	Denver, CO	Hartford, CT	Melbourne, FL	Pittsburgh, PA
Birmingham, AL	Des Moines, IA	Honolulu, HI	Memphis, TN	Portland, OR
Bismarck, ND	Detroit, MI	Houston, TX	Miami, FL	Portsmouth, NH
Boston, MA	Dickinson, ND	Huntington, WV	Milwaukee, WI	Poughkeepsie, NY
Bryan, TX	Eau Claire, WI	Huntsville, AL	Minneapolis, MN	
Cedar Rapids- Iowa City, IA	El Paso, TX	Indianapolis, IN	Minot, ND	
Charleston, SC	Fairbanks, AK	Jackson, MS	Mobile, AL	
	Farmington, NM	Jacksonville, FL	Modesto, CA	



How to use OpenBeak with SYNC® AppLink™

Currently for BlackBerry®

Starting OpenBeak Using Voice Commands

1. Press the voice button on your audio system or steering wheel, and then say "Mobile apps". When SYNC is ready, it says "Mobile apps, please say a command".
2. Say "OpenBeak".
3. OpenBeak provides you with the number of new direct messages and replies

Starting OpenBeak Using the Radio Controls

1. Press the phone button on your audio system or steering wheel.
2. Browse to Mobile Applications, and then press OK. If your vehicle is equipped with a navigation system, you need to press the SYNC Apps tab, then Mobile Applications.
3. Select OpenBeak.

Action	Voice Command	Radio or Steering Wheel Control
Read your friends timeline	Read Timeline	_____
Read any @ or at replies	Read Replies	_____
Read your direct message feed	Read Direct Messages	_____
Refresh all of your timelines	Refresh All	_____
Skip to the next tweet in the feed while listening to a feed	Next Tweet or Next Message	SEEK forward (▶▶)
Go back to the previous tweet while listening to a feed	Previous Tweet or Previous Message	SEEK backward (◀◀)
Re-tweet a tweet to your followers while listening to a feed	Re Tweet	_____
Add a tweet to your favorite tweets while listening to a feed	Favorites	_____

Note

You must have a Twitter account and be logged in through OpenBeak before using it with AppLink.

Starting NPR News Using Voice Commands

1. Press the voice button on your audio system or steering wheel, and then say "Mobile apps". When SYNC is ready, it says "Mobile apps, please say a command".
2. Say "NPR".
3. Audio begins playing once the data arrives on your device.

Starting NPR News Using the Radio Controls

1. Press the phone button on your audio system or steering wheel.
2. Browse to Mobile Applications, and then press OK. If your vehicle is equipped with a navigation system, you need to press the SYNC Apps tab, then Mobile Applications.
3. Select NPR.

iPhone users

must also do the following:

1. Make sure the phone is connected via Bluetooth and the Apple-specific USB cable.
2. NPR News must be running on the phone.
3. Once NPR News is running, lock your phone by pressing the Sleep/Wake button.

Action	Voice Command	Radio or Steering Wheel Control
Select an NPR Station	Stations	_____
Select an NPR Program	Programs	_____
Select an NPR Topic	Topics	_____
Play stories saved in your playlist	Playlist	_____
Play the latest recorded hourly news	Hourly News	_____
Play a station assigned to a preset button	_____	Press a preset
Save the currently playing station to a preset	_____	Press and hold a preset button
Play the next station	_____	Press SEEK forward (▶▶)
Play the previous station	_____	Press SEEK backward (◀◀)
Play the next segment within a Program or Topic set	_____	Press SEEK forward (▶▶)
Play the previous segment within a Program or Topic set	_____	Press SEEK backward (◀◀)
Play the next station stream (if available)	_____	Press TUNE up
Play the previous station stream (if available)	_____	Press TUNE down

Note

- Local stations are automatically assigned to the radio preset buttons.
- Stations available through voice commands include top 25 stations from across the country as well as at least one local station.
- If a desired station is not within the top 25 or local stations, you need to add it to your Favorites list from within the app and set it to a preset to have it available on SYNC.
- After selecting a program, NPR automatically plays a local live stream, if available.
- Former NPR newscaster, Carl Kassel, helps you find your way through NPR News programs by providing informational tips.



NPR Stations

Available Programs

All Songs Considered
All Things Considered
Car Talk
Diane Rehm (WAMU)
Fresh Air from WHY
Intelligence Squared US
It's All Politics

Latino USA (KUT)
Marian McPartland's
Piano Jazz
Morning Edition
On Point (WBUR)
On the Media (WNYC)
Only A Game (WBUR)

Planet Money
Radiolab (WNYC)
Science Friday
Snap Judgement
State of the Re:Union
Talk of the Nation
Tell Me More

Thistle & Shamrock
Wait Wait... Don't Tell Me!
Weekend Edition Saturday
Weekend Edition Sunday
Weekend on All
Things Considered
World Café (WXPB)

Available Topics

News
U.S.
World
Politics
Business

Science
Health
Opinion
Technology
Sports

Arts & Life
Books
Movies
Food
Music News

Rock/Pop/Folk
Jazz & Blues
Classical
Hip Hop/R&B



How to use Slacker with SYNC® AppLink™

Currently for Android™, BlackBerry® and iPhone®

Starting Slacker Using Voice Commands

1. Press the voice button on your audio system or steering wheel, and then say "Mobile apps". When SYNC is ready, it says "Mobile apps, please say a command".
2. Say "Slacker".
3. Music begins playing once the data arrives on your device.

Starting Slacker Using the Radio Controls

1. Press the phone button on your audio system or steering wheel.
2. Browse to Mobile Applications, and then press OK. If your vehicle is equipped with a navigation system, you need to press the SYNC Apps tab, then Mobile Applications.
3. Select Slacker.

iPhone users

must also do the following:

1. Make sure the phone is connected via Bluetooth and the Apple-specific USB cable.
2. Slacker must be running on the phone.
3. Once Slacker is running, lock your phone by pressing the Sleep/Wake button.

Action	Voice Command	Radio or Steering Wheel Control
Play the next song	Skip	SEEK forward (▶)
Play the previous song	Skip Back	SEEK backward (◀)
Play a pre-made or custom station	Play Station <Station Name>	_____
Play one of your playlists	Play Playlist <Playlist Name>	_____
Play a playlist cached on your device	Play cached playlist <Playlist Name>	_____
Play a cached station on your device	Play cached station <Station Name>	_____
"Heart" the current song	Heart Song -OR- I Love This -OR- This Rocks	Hold SEEK forward (▶)
Ban the current song from your station	Ban Song	Hold SEEK backward (◀)
Ban the current artist from your station	Ban Artist	Hold SEEK backward (◀)
Hear the next song	Skip	_____
Provide the current artist and song information	What's Playing	_____
Provide the artist and song information of the upcoming song	What's Next	_____
Provide the artist and song information of the last song	What Was the Last Song	_____
Hear the stations you recently played	List Recently Played	_____
Hear Slacker's Top Stations	List Top Stations	_____
Hear a list of your favorite stations	List Favorite Stations	_____
Hear a list of your playlists	List My Playlists	_____



How to use Slacker with SYNC® AppLink™

Currently for, Android™, BlackBerry® and iPhone®

Action	Voice Command	Radio or Steering Wheel Control
Hear stations in Slacker's Spotlight	List Slacker Spotlight	_____
Hear a list of your cached content	List Cached Content	_____
Turn shuffle on or off while playing a playlist	Toggle Shuffle Mode	_____
Play a random station	Surprise Me -OR- I'm Bored	_____
Play the station assigned to a preset button	_____	Press a preset button
Save the currently playing station to a preset	_____	Hold preset button
Play, pause or resume audio	_____	Play/Pause (▶/) or OK

Note

- Slacker automatically assigns your favorite stations first, then recently played stations, then the top stations to the radio presets.
- You can override a preset station by pressing and holding the preset button while listening to the station that was assigned that preset.

Slacker Radio Stations

For use with the voice command "Play Station <Station Name>"

40s Hits	Alternative Hits	Comedy [Explicit]	Graduation Party
50s Hits	Americana	Contemporary Holiday	Great Songs You Forgot
60s Hits	Big Band/Swing	Contemporary Jazz	Halloween
60s Rock	Bluegrass	Country	Hard Rock
70s Hits	Blues	Country Hits	Hello Music Artists
70s Rock	Broadway Music	Country Holiday	to Watch
80s Alternative	Broken Heart	Country Love	Hip Hop
80s Hits	Chill	Dance Pop	Hip Hop Hits
80s Rock	Christian	Disco	Hip Hop/R&B
80s, '90s & Today	Christian Rock	Dubstep / Breaks / DnB	Hip Hop/R&B Hits
90s Alternative	Classic Country	Dysfunctional Holiday	Hits
90s Country	Classic Jazz	Easy Listening	Hits of the 2000s
90s Hip Hop	Classic Metal	Electronic	Holiday Classics
90s Hits	Classic Punk	Electronic Hits	Holiday Hits
90s Rock	Classic Rock	Electronic/Dance	Holiday Party
ABC News	Classic Soul	ESPN Radio	Hot Topic
Acid Jazz	Classical	Far East	House
Adult Alternative	Classical Hits	Movement Showcase	Indie
Alternative Country	Classical Hits Light	FILTER Magazine	Indie Chill
Alternative Hard Rock	Classical Holiday	Folk	Indie Electronic
Alternative	Club Hits	Funk	Indie Hits
Alternative Chill	Comedy	Gospel	Jam Bands



Slacker Radio Stations

Slacker Radio Stations continued

For use with the voice command "Play Station <Station Name>"

Jazz	Oldies	Regional Mexican	The New 40
Jazz Holiday	One-Hit Wonders	Rock	The Source
Kids	Outlaw Country	Rock Alternativo	Today's Hits
Latin	Party Alternative	Rock Ballads	Toddlers
Love Songs	Party Country	Rock Hits	Traditional Blues
Metal	Party Hip Hop/R&B	Rock/Alt. Holiday	Trance
Metropolitan Mood	Party Hits	Slow Jamz	Tropical
Modern Blues	Party Metal	Smooth Jazz	TV Commercials
Modern Jazz	Party Rock	Soft Hits	UK Hits
Mother's Day	Prog Rock	Soft Rock	UK Indie
Movie Music	Punk	Southern Rock	Underground Hip Hop
Navidad Latina	R&B	Spa	Vocal Standards
New Age	R&B Hits	Spanish	World
New Country	R&B/Soul Holiday	Spanish Pop	
News	Reggae	Spiritual	
Old School Rap	Reggaeton/Hip Hop	Teen Pop	



How to use TuneIn Radio® with SYNC® AppLink™

Currently for iPhone®

Starting TuneIn Radio Using Voice Commands

1. Press the voice button on your audio system or steering wheel, and then say "Mobile apps". When SYNC is ready, it says "Mobile apps, please say a command".
2. Say "TuneIn Radio".
3. Music begins playing once the data arrives on your device.

Starting TuneIn Radio Using the Radio Controls

1. Press the phone button on your audio system or steering wheel.
2. Browse to Mobile Applications, and then press OK. If your vehicle is equipped with a navigation system, you need to press the SYNC Apps tab, then Mobile Applications.
3. Select TuneIn radio.

iPhone users

must also do the following:

1. Make sure the phone is connected via Bluetooth and the Apple-specific USB cable.
2. TuneIn must be running on the phone.
3. Once TuneIn Radio is running, lock your phone by pressing the Sleep/Wake button.

Action	Voice Command	Radio or Steering Wheel
Play audio	Play	Play/Pause (▶/) or OK
Pause audio	Pause	Play/Pause (▶/) or OK
Play the next station	Next/Skip/Seek	SEEK forward (▶)
Play the previous station	Previous/Back	SEEK backward (◀)
Add current station to presets list	Add Preset	_____
Provides the current station information	What's Playing	_____
Play stations similar to current station	Play Related	_____
Play the first station in presets list	Presets	_____
Play the most recent station you listened to	Recents	_____
Play recommended stations based on your listening	Recommended	_____
Play the station based on your current location	Local Radio	_____
Select a city/country	Explore Location	_____
Select a genre	Explore Genre	_____
Play the station assigned to a preset button	_____	Press a preset button

Note

TuneIn Radio automatically assigns your favorite radio stations to the presets in the order they appear in the station list in the phone app.



TuneIn Radio® Stations

Available Genres

00s, two thousands	Chinese	House Music	Rock
40s	Chinese Talk	Indie Rock	R and B
50s	Christian Contemporary	Industrial	Reggae
60s	Christian Rock	Irish Talk	Reggaeton
70s	Christian Spanish	Islam	Religious
80s	Christian Talk	Italian Talk	Religious Talk
90s	Christmas	Japanese Talk	Rock
Adult Contemporary	Classic Country	Jazz	Rugby
Adult Rock	Classic Hits	Jewish	Rumba
African Music	Classical	Latin Jazz	Salsa
Alternative	College	Lounge	Scanner
Ambient	Country	Love Songs	Sikh
Americana	Creole	Metal	Smooth Jazz
Arabic	Cricket	Mixed Martial Arts	Soccer
Arabic Talk	Cumbia	Modern Rock	Soul, Soul Music
Asian	Decades	Motorsports	Soundtracks
Asian Talk	Disco	Motown	Spanish Talk
Bachata	Drum 'N' Bass	New Age	Sports Talk
Balada	Dubstep	News	Symphony
Banda	Duranguense	Old School	Talk
Baroque	Dutch	Oldies	Tamil Talk
Baseball	Easy Listening	Opera, Opera Music	Techno
Basketball	Eclectic	Police, Police Scanner	Tennis
Bluegrass	Electronic Garage	Polish Music	Top 40, Pop
Blues	Electronic	Polish Talk	Traffic
Bolero	Electronica	Politics, Political Radio	Trance
Breakbeats	Folk	Polka, Polka Music	Turkish Music
Bulgarian	Golf	Pop Latino	Turkish Talk
Business	Gospel	Portuguese	Vietnamese Music
Caribbean	Gothic	Portuguese Talk	Vietnamese Talk
Catalan	Hip Hop	Progressive	Weather
Celtic	Hockey	Public	Wrestling
Chill	Horse Racing	Punk, Punk Music, Punk	



TuneIn Radio® Stations

Continued

Available Locations

Albany	Cape Cod	Great Falls	Jordan
Albuquerque	Cape Town	Greece	Kalamazoo
Allentown	Cedar Rapids	Greenland	Kansas City
Amsterdam	Champaign	Guadeloupe	Kenya
Anchorage	Charleston-Charleston	Guangdong	Knoxville
Ann Arbor	South Carolina	Guatemala	Lafayette
Antarctica	Charleston-West Virginia	Ha Noi	Lancaster
Argentina	Charlotte-Rock Hill	Hamburg	Lansing
Asheville	Chicago	Hampsons	Las Vegas
Aspen	Chile	Hanford	LaSalle
Atlanta	Chongqing	Hannover	Lebanon
Atlantic City	Cincinnati	Harrisburg	Lexington
Augusta	Cleveland	Harrisonburg	Lima
Austin	Colorado Springs	Hartford-Middletown	Little Rock
Australia	Columbus	Hattiesburg	Liverpool
Austria	Concord	Hawaii	London
Baghdad	Copenhagen	Hilton Head	Loreto
Bakersfield	Costa Rica	Honduras	Los Angeles
Baltimore	Dallas	Hong Kong	Louisville
Barcelona	Daytona Beach	Honolulu	Madagascar
Bayrut	Delhi	Hot Springs	Madison
Beaumont-Port Arthur	Denmark	Houston	Madrid
Beijing	Denver	Hudson Valley	Maldives
Belgium	Des Moines	Hungary	Manchester
Belize	Detroit	Huntington	Maryland
Berlin	Dominican Republic	Huntsville	Marystown
Bermuda	Dubai	Iceland	Mason City
Binghamton	Dublin	Idaho	Massachusetts
Birmingham	Ecuador	India	Maui
Bloomington	Edinburgh	Iraq	Melbourne
Boca Raton-West Palm	Egypt	Ireland	Memphis
Beach	El Salvador	Israel	Mexico City
Bogota	Europe	Istanbul	Miami
Boise	Fiji	Italy	Milan
Boston	Finland	Jackson	Milwaukee-Racine
Brussels	Florence	Jamaica	Minneapolis
Budapest	Frankfurt	Japan	Monaco
Buenos Aires	Fujian	Jerusalem	Mongolia
Calgary	Geneve	Jiangsu	Monmouth-Ocean
Cambridge	Genova	Johnson City	Monroe
Cancun	Ghana	Johnstown	Monterey



TuneIn Radio® Stations

Continued

Available Locations continued

Montgomery	Oklahoma City	Riverside	Sweden
Montreal	Omaha	Rochester	Switzerland
Moorhead-Fargo	Ontario	Rockford	Sydney
Morocco	Orlando	Romania	Syracuse
Morristown	Pakistan	Rome	Tampa
Moscow	Palestine	Russia	Tel Aviv
Mumbai	Palm Springs	Rwanda	Thailand
Munich	Panama	Sacramento	Tokyo
Myrtle Beach	Paraguay	Saint Petersburg	Toledo
Nags Head-Elizabeth City	Paris	Saint Tropez-San Tropea	Topeka
Napoli	Pasadena	Salem	Toronto
Nashville	Pensacola	Salisbury	Trenton
Nassau, Suffolk	Peru	Salt Lake	Tucson
Nepal	Philadelphia	Salvador	Tulsa
Netherlands	Philippines	San Antonio	Turkey
New Bedford	Phoenix	San Diego	Turks and Caicos
New Brunswick	Pittsburgh	San Francisco	Uganda
New Haven	Plymouth	San Jose	United Arab Emirates
New London	Poland	San Juan	Vancouver
New Orleans	Portland	Santa Barbara	Vatican City
New Plymouth	Portugal	Santa Cruz	Venezuela
New York City-New York	Poughkeepsie	Santa Fe	Victoria
New Zealand	Prauge	Santa Rosa	Waco
Newbury	Prince Edward Island	Saudi Arabia	Washington
Newfoundland	Providence	Savannah	Washington, DC
Norfolk-Virginia Beach-Newport	Puerto Rico	Seattle	Waterloo
Niagara Falls-Buffalo	Quebec	Shanghai	Watertown
Nicaragua	Queensland	Singapore	Waterville
Norway	Queenstown	South Bend	Wellington
Nottingham	Raleigh	Springfield	Wilmington
Nova Scotia	Richmond	Sri Lanka	
	Rio de Janeiro	Stockholm	



How to use SYNC® Destinations with SYNC® AppLink™

Currently for, Android™, BlackBerry® and iPhone®

Starting SYNC Destinations Radio Using Voice Commands

1. Press the voice button on your audio system or steering wheel, and then say "Mobile apps". When SYNC is ready, it says "Mobile apps, please say a command".
2. Say "SYNC Destinations".
3. Audio begins playing once the data arrives on your device.

Starting SYNC Destinations Using the Radio Controls

1. Press the phone button on your audio system or steering wheel.
2. Browse to Mobile Applications, and then press OK. If your vehicle is equipped with a navigation system, you need to press the SYNC Apps tab, then Mobile Applications.
3. Select SYNC Destinations.

iPhone users

must also do the following:

- 1 Make sure the phone is connected via Bluetooth and the Apple-specific USB cable.
- 2 SYNC Destinations must be running on the phone.
- 3 Once TuneIn Radio is running, lock your phone by pressing the Sleep/Wake button.

Action	Voice Command	Radio or Steering Wheel Control
Get directions to one of your "My Points"	Directions	_____
Get directions to particular "My Point"	Directions To <My Point>	_____
Get traffic to one of your "My Points"	Traffic	_____
Get traffic to particular "My Point"	Traffic To <My Point>	_____
Report an accident on the road to the driving community	Report Accident	_____
Report a police situation on the road to the driving community	Report Police Situation	_____
Get directions to a web point that was sent to your vehicle	Retrieve Web Point	_____
Get a traffic/incident report (around your current location)	Incidents Around Me	_____
List all of your "My Points"	List My Points	_____
Access the "My Point" assigned to a preset button	_____	Press a preset

Note

SYNC Destinations automatically assigns your My Points to the radio presets.



Tips For Using AppLink™

General

- While running an app on SYNC, you can switch to another app by pressing the voice button and saying the name of the app (such as "Stitcher").
- To close a currently running app, press the voice button and say "Exit". If your vehicle is equipped with a touchscreen, say "Quit <app name>". This does not close the app on your phone, just on SYNC.
- If an app is running on SYNC and you quit or shut down the app on your phone, you need to use the voice command "Find mobile apps" before the app can run on SYNC again.
- You can make a phone call while running an app by pressing the voice button and saying "Call <name of the contact>" or "Dial", then the number.
- If you own a 2011 Ford Fiesta, visit www.SYNCMYride.com to download the AppLink update on your vehicle. (If you have not registered, you need to create an account in order to get the instructions for updating AppLink.) When the update is complete, turn off the vehicle, then your phone. Turn your phone back on, then the vehicle.

BlackBerry®

- In order for an app to appear in the SYNC mobile apps menu, it must be running on your phone while the phone's Bluetooth is running. If the app is running on your phone, but does not appear in the menu (after selecting "Find New Applications"):
 1. Shut down the app on the phone.
 2. Restart it while Bluetooth is running on the phone.
 3. Select "Find New Applications" in the SYNC mobile apps menu.
 4. If the app still does not appear, remove, and then reinstall, the battery from your phone.
 5. Once the phone restarts, turn its Bluetooth feature on, and then start the app on the phone
 6. Pair the phone to SYNC and look for the app in the mobile apps menu.
- If an app seems to be running properly on SYNC, but there is either no sound or it is very low, try increasing the volume by using the phone's volume control.

Android™

- If an app seems to be running properly on SYNC, but there is either no sound or it is very low, try increasing the volume by using the phone's volume control.

SYSTEM REQUIREMENTS

SYNC AppLink works best with the following device models:

- Android with OS 2.1 (or higher). OS 2.3 (or higher) improves stability.
- Blackberry phones should be running the latest OS.
- iPhone 3GS (or newer) with OS 4.2.1 (or higher)

IMPORTANT: If you experience a slow data connection on your phone when using applications away from your vehicle, or if the applications function poorly when away from your vehicle, you can expect the same performance when using AppLink. AppLink is just a gateway for compatible applications to connect to your vehicle; it does not improve or degrade performance or operation on your phone.