



Bedienungsanleitung
Operating Instructions



CAFFEO[®]
BARISTA **T**

DEUTSCH

ENGLISH

FRANÇAIS

NEDERLANDS

ITALIANO

Table of contents

1	For your safety	53
1.1	Symbols used	54
1.2	Proper use.....	54
1.3	Danger due to electrical current	54
1.4	Risk of burning and scalding	55
1.5	General safety.....	55
2	Overview of the appliance	56
2.1	Overview of the appliance	56
2.2	Overview of the control panel	58
3	First steps	59
3.1	Unpacking the appliance.....	59
3.2	Checking the delivery contents.....	59
3.3	Positioning the appliance	60
3.4	Connecting the appliance	60
3.5	Switching the appliance on for the first time	60
4	Basic operation	61
4.1	Switching the appliance on and off	61
4.2	Using the control panel	62
4.3	Navigating in the menu.....	63
4.4	Filling with coffee beans and using Bean Select	65
4.5	Using ground coffee	66
4.6	Filling in water.....	67
4.7	Adjusting the outlet.....	68
4.8	Using milk.....	68
4.9	Emptying the drip tray and coffee grounds container.....	70
5	Preparing beverages	71
5.1	Preparing espresso and café crème	71
5.2	Preparing cappuccino	71
5.3	Preparing latte macchiato	72
5.4	Preparing milk froth and warm milk	72
5.5	Preparing hot water	73
5.6	Changing beverage settings before and during preparation	73
5.7	Stopping beverage preparation.....	74
5.8	Preparing two beverages simultaneously	74
6	Permanently changing beverage settings	75
6.1	Selecting recipes.....	75
6.2	Changing default settings	76

7	Personal settings – "My Coffee"	77
7.1	Editing personal user profiles	77
7.2	Selecting/changing personal settings	78
7.3	Preparing beverages with personal settings	79
8	Changing basic settings	80
8.1	Setting the language	80
8.2	Setting the time	80
8.3	Setting Auto OFF.....	81
8.4	Setting energy save mode.....	82
8.5	Resetting the appliance to the factory settings.....	82
8.6	Displays in the System menu.....	83
8.7	Setting the grinding fineness	83
8.8	Converting the connection for the milk hose	84
9	Care and maintenance	85
9.1	General cleaning	85
9.2	Rinsing the coffee system	85
9.3	Cleaning the brewing unit.....	86
9.4	"Easy Cleaning" programme	87
9.5	"Cleaning milk system" programme	87
9.6	"Cleaning coffee system" programme.....	88
9.7	"Descaling" programme	89
9.8	Setting the water hardness	90
9.9	Using a water filter.....	91
10	Problems	93
11	Transport, storage and disposal	94
11.1	Venting the appliance	94
11.2	Transporting the appliance.....	94
11.3	Disposing of the appliance.....	95
12	Technical data	95

Dear Customer,

Thank you for purchasing the CaffèO Barista fully automatic coffee maker.

The operating instructions will help you to discover the diverse options offered by the appliance and enjoy your coffee to the full.

Read the operating instructions through carefully. This will help to avoid personal injury and material damage. Store the operating instructions carefully. If you pass the appliance on, enclose the operating instructions with it.

Melitta accepts no liability for damage caused by failure to observe the operating instructions.

If you require further information or have any questions on the appliance, contact Melitta or visit our website at:
www.melitta.de

We hope you enjoy using your appliance.

1 For your safety

- CE** The appliance conforms to the following European directives:
- 2006/95/EC (low voltage),
 - 2004/108/EC (electromagnetic compatibility),
 - 2011/65/EU (RoHS),
 - 2009/125/EC (eco-design/ErP).

The appliance has been built using the latest technology. Residual dangers nevertheless exist.

You must observe the safety instructions to avoid dangers. Melitta accepts no liability for damage caused by failure to observe the safety instructions.

1.1 Symbols used

The following symbols indicate particular risks in using the appliance or provide useful tips.

CAUTION

The signal word CAUTION indicates possible injuries.

ATTENTION

The signal word ATTENTION indicates possible damage to the appliance.

Information

The signal word "Information" indicates additional notes and tips on using the appliance.

1.2 Proper use

The appliance is used to prepare beverages consisting of coffee beans or ground coffee and to heat milk and water.

The appliance is intended for use in private households.

Any other use is regarded as improper and may lead to personal injury and material damage. Melitta accepts no liability for damage which arises due to improper use of the appliance.

1.3 Danger due to electrical current

If the appliance or the power cable is damaged, the risk of a fatal electric shock is run.

Observe the following safety instructions to avoid dangers due to electrical current:

- Do not use a damaged power cable.
- A damaged power cable may only be replaced by the manufacturer, its customer service or a similarly qualified person.
- Do not open any covers firmly screwed onto the appliance housing.
- Only use the appliance when it is in a technically flawless condition.

- A defective appliance may only be repaired by an authorised workshop. Do not repair the appliance yourself.
- Do not undertake any changes to the appliance, its components or its accessories.
- Do not immerse the appliance in water.

1.4 Risk of burning and scalding

Escaping fluids and steam may be very hot. Parts of the appliance also become very hot.

Observe the following safety instructions to avoid scalds and burns:

- Prevent skin from coming into contact with escaping fluids and steam.
- Do not touch any nozzles on the outlet during operation.

1.5 General safety

Observe the following safety instructions to avoid personal injury and material damage:

- Do not reach into the interior of the appliance during operation.
- The appliance and its power cable must be kept out of the reach of children under 8 years of age.
- This appliance may be used by children over 8 years of age and by persons with reduced physical, sensory or mental capabilities or a lack of experience and knowledge if they are supervised or have been instructed in using the appliance safely and understand the resulting risks.
- Children must not play with the appliance. Cleaning and maintenance must not be undertaken by children younger than 8 years of age. Children over 8 years of age must be supervised during cleaning and maintenance.
- Disconnect the appliance from the power supply when it is left unsupervised for a long time.

2 Overview of the appliance

2.1 Overview of the appliance

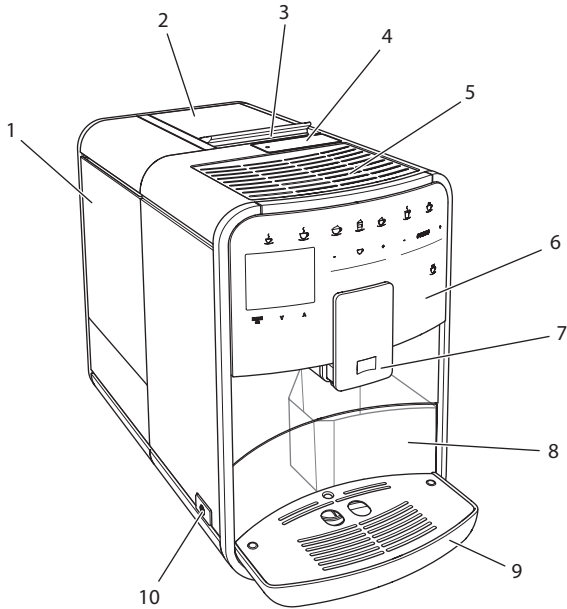


Fig. 1: Front left of the appliance

- 1 Water tank
- 2 2-chamber bean container
- 3 "BEAN SELECT" slider
- 4 Ground coffee chute
- 5 Cup rest
- 6 Control panel
- 7 Height-adjustable outlet with 2 coffee nozzles, 2 milk nozzles, 1 hot water nozzle
- 8 Coffee grounds container (inner)
- 9 Drip tray
- 10 ON/OFF button

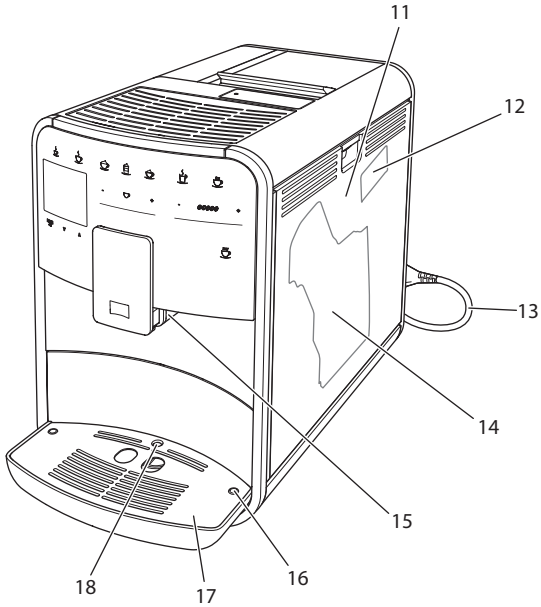


Fig. 2: Front right of the appliance

- 11 Cover
- 12 "Grinding fineness adjustment" lever (behind the cover)
- 13 Power cable with cable insert compartment
- 14 Brewing unit (behind the cover)
- 15 Milk hose connection at the outlet (can be converted to left side)
- 16 Milk hose connection at the drip tray (possible on both sides)
- 17 Cup plate
- 18 Float

2.2 Overview of the control panel

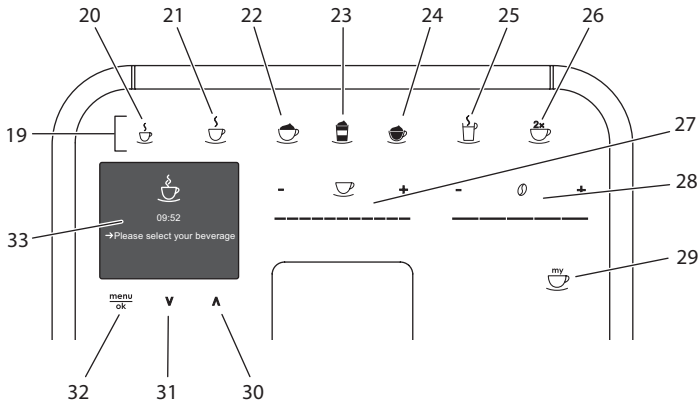


Fig. 3: Control panel

Item	Designation	Function
19	Direct keys	Preparing beverages
20	Espresso	Preparing espresso
21	Café crème	Preparing café crème
22	Cappuccino	Preparing cappuccino
23	Latte macchiato	Preparing latte macchiato
24	Milk froth/warm milk	Preparing milk froth or warm milk
25	Hot water	Preparing hot water
26	2 cups	Two-cup dispensing
27	Beverage amount slider	Setting the beverage amount
28	Coffee strength slider	Setting the coffee strength
29	My Coffee	Selecting personal settings for beverages
30	Up arrow button	Navigating up in the menu
31	Down arrow button	Navigating down in the menu
32	menu/ok	Calling up the menu or confirming inputs
33	Display	Display of current menus and messages Example: ready symbol

3 First steps

This chapter describes how to prepare your appliance for use.

3.1 Unpacking the appliance

CAUTION

Contact with cleaning agents may lead to eye and skin irritation.

- Store the enclosed cleaning agents out of the reach of children.
- Unpack the appliance. Remove the packaging material, the adhesive strips and the protective films from the appliance.
- Keep the packaging material for transport and possible return shipments.

Information

The appliance may contain traces of coffee and water. The appliance has been tested in the factory to ensure that it functions perfectly.

3.2 Checking the delivery contents

Check the completeness of delivery using the following list. If parts are missing, contact your retailer.

- Coffee spoon with screw-in aid for the water filter,
- Milk hose or milk container including milk hose (depending on model),
- Cleaning brush,
- Coffee system cleaning agent,
- Milk system cleaning agent,
- Descaling agent,
- Water filter,
- Test strip for determining the water hardness.

3.3 Positioning the appliance

Observe the following instructions:

- Do not position the appliance in damp rooms.
- Position the appliance on a stable, flat and dry surface.
- Do not position the appliance in the vicinity of sinks or the like.
- Do not position the appliance on hot surfaces.
- Position the appliance a sufficient distance, approx. 10 cm, away from the wall and other objects. The space above the appliance should be at least 20 cm.
- Route the power cable so that it cannot be damaged by edges or hot surfaces.

3.4 Connecting the appliance

Observe the following instructions:

- Check that the supply voltage matches the operating voltage specified in the technical data (see table *Technical data* on page 95).
- Only connect the appliance to a properly installed earthing contact socket. If in doubt, consult a specialist electrician.
- The socket must be fused with at least a 10 A fuse.

3.5 Switching the appliance on for the first time

During initial starting up, you can set the language, the time and the water hardness. The settings can be changed at a later point in time (see chapter 8 *Changing basic settings* on page 80 and chapter 9.8 *Setting the water hardness* on page 90).

Use the enclosed test strip to determine the water hardness. Observe the instructions on the test strip packaging and in table *Water hardness range* on page 95.

Information

We recommend pouring away the first two cups of coffee after initially starting up.

Requirement: The appliance has been positioned and connected.

1. Place a vessel beneath the outlet.
2. Switch the appliance on with the ON/OFF button.
 - » The welcome display appears on the display.
 - » The request to carry out set-up appears on the display: *Please set up the machine.*
 - » The "menu/ok" button flashes.
3. Confirm with "menu/ok".
 - » The *Language* menu appears.
4. Select your language with the arrow buttons. Confirm with "menu/ok".
 - » The *Clock* menu appears.
5. Select the hour and minutes with the arrow buttons. Confirm each setting with "menu/ok".
 - » The *Water hardness* menu appears.
6. Select the determined water hardness range with the arrow buttons or confirm the default value with "menu/ok".
 - » The request *Please refill and insert water tank* appears.
7. Remove the water tank. Rinse the water tank out with clean water. Fill the water tank with fresh water and insert it.
 - » The appliance heats up and performs automatic rinsing.
 - » The ready symbol and the request *Fill beans* appear in the display
8. Fill coffee beans into the bean container. To do this, read chapter *Filling with coffee beans and using Bean Select* on page 65.

4 Basic operation

This chapter describes basic operating steps for using the appliance on a daily basis.

4.1 Switching the appliance on and off

Before switching on when initially starting up the appliance, read chapter 3.5 *Switching the appliance on for the first time* on page 60.

Information

- The appliance performs automatic rinsing when switching on and off.
- During rinsing, rinsing water is also conducted into the drip tray.

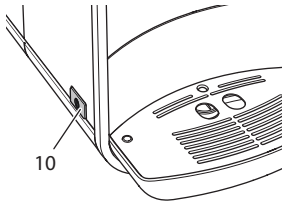


Fig. 4: ON/OFF button



Fig. 5: Welcome display

Switching the appliance on

1. Place a vessel beneath the outlet.
2. Press the ON/OFF button (10).
 - » The welcome display appears on the display (see Fig. 5).
 - » The appliance heats up and performs automatic rinsing.
 - » The ready symbol appears on the display.

Switching the appliance off

1. Place a vessel beneath the outlet.
2. Press the ON/OFF button (10).
 - » The appliance performs automatic rinsing.
 - » The appliance switches off.

Information

- The appliance switches off automatically when it is not operated for a long time. Automatic rinsing is also carried out in this case.
- The off time can be set in the *Auto OFF* menu, see chapter 8.3 *Setting Auto OFF* on page 81.
- If no beverage has been prepared since switching on or if the water tank is empty, no rinsing takes place.

4.2 Using the control panel

The essential functions can be accessed using the control panel.

Press the button with a fingertip. The control panel does not react when touched with a pen or other objects.

Only those buttons which can be used in the appliance's current status light up.

Use the following actions to operate the control panel:



Brief press

Press a button briefly to select a function.



Long press

Press a button for longer than 2 seconds to select a second function which may be available.



Press "+" or "-"

Press "+" or "-" to increase or reduce the current value.
Hold a button down to change the value continuously.



Press the slider

Press on the slider to select a value.



Pull the slider

Press and pull the slider to increase or reduce the current value.

4.3 Navigating in the menu

To set individual beverages and for maintenance and care, you must call up the menu in the display and navigate in the menu.

Observe the instructions on the display.

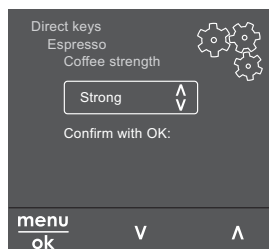


Fig. 6: Example: display with buttons

Use the following options to navigate in the menu:

Calling up the menu and confirming the selection



Press the "menu/ok" button for longer than 2 seconds to call up the menu.

Press the "menu/ok" button briefly to confirm your selection.

Navigating in the menu



Press the arrow buttons to navigate down or up in the menu. Hold an arrow button down to quickly switch to the menu options.

Exiting a menu



Select the command *Exit* with the arrow buttons and confirm with "menu/ok" to exit a menu.

Exit sub-menus, which only display information and in which you do not carry out any settings, with "menu/ok".

Calling up sub-menus

Certain of the appliance's functions are reached by calling up several sub-menus in succession.

Sub-menus are always called up in a similar manner. Navigation to the *Descaling* programme is described here as an example.

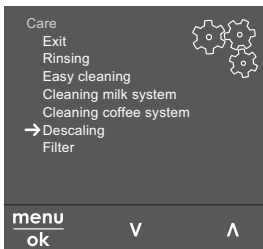


Fig. 7: Navigating to the *Descaling* programme

1. Press the "menu/ok" button for 2 seconds.
 - » The menu appears on the display.
2. Use the arrow buttons to select *Care* and confirm with "menu/ok".
3. Use the arrow buttons to select *Descaling* and confirm with "menu/ok".

The selection of functions is always shown in shortened form in these operating instructions:

- Navigate to the *Care > Descaling* menu.

4.4 Filling with coffee beans and using Bean Select

Roasted coffee beans lose their aroma. Only fill the bean container with as many coffee beans as you will consume over the next 3–4 days.

ATTENTION

Using unsuitable types of coffee may lead to clogging of the grinder.

- Do not use freeze-dried or caramelised coffee beans.
- Do not pour ground coffee into the bean container.

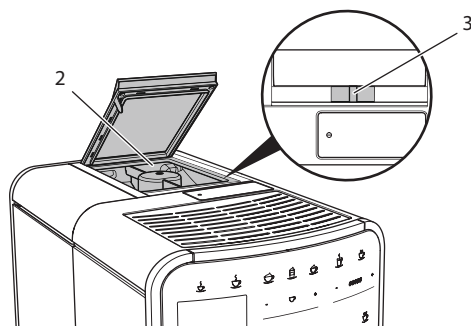


Fig. 8: 2-chamber bean container

The 2-chamber bean container (2) enables you to use two different types of coffee. For example, fill one chamber with espresso beans and the other with café crème beans. You can switch between chambers using the "BEAN SELECT" slider (3).

CAUTION

When switching bean chambers, a residual amount of coffee beans remains in the grinder. The first two coffee beverages after switching to decaffeinated beans may still contain caffeinated coffee. This may affect the health of people with caffeine intolerance.

- People with caffeine intolerance should only consume the third coffee beverage after switching over.

1. Open the lid of the 2-chamber bean container (2).
2. Fill coffee beans into the bean container.
3. Close the lid of the 2-chamber bean container.
4. Select a chamber using the "BEAN SELECT" (3) slider.

Information

When the slider is in the centre position, no coffee beans enter the grinder.

4.5 Using ground coffee

You may also use ground coffee to prepare coffee beverages.

ATTENTION

The use of unsuitable types of coffee may lead to brewing unit clogging.

- Do not use any instant products.
- Fill a maximum of one coffee spoon of ground coffee into the ground coffee chute.

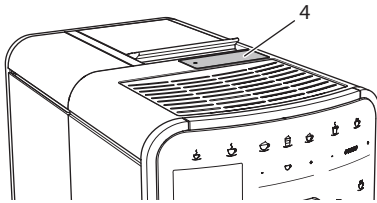


Fig. 9: Ground coffee chute

1. Open the lid of the ground coffee chute (4).
2. Use the enclosed coffee spoon for dosing.
Fill a maximum of one coffee spoon of ground coffee into the ground coffee chute.
3. Close the lid of the ground coffee chute.
4. Proceed as described in chapters 5 to 7.

Information

- Two-cup dispensing is not possible when using ground coffee.
- If you do not prepare any coffee within 3 minutes of opening the ground coffee chute, the appliance switches to operation with coffee beans and the ground coffee is discharged into the coffee grounds container.

4.6 Filling in water

Use only fresh, cold water without carbon dioxide for optimum coffee enjoyment. Change the water daily.

Information

The quality of the water extensively determines the taste of the coffee. Therefore, use a water filter (see chapter 9.8 *Setting the water hardness* on page 90 and chapter 9.9 *Using a water filter* on page 91).

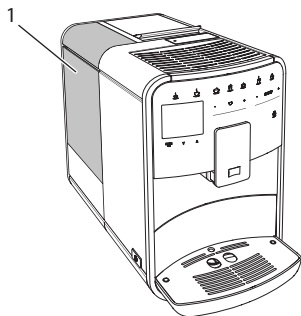


Fig. 10: Water tank

1. Open the lid of the water tank and pull the water tank (1) upwards out of the appliance using the handle.
2. Fill the water tank with water.
Note the maximum capacity of 1.8 litres.
3. Insert the water tank into the appliance from above and close the lid.

4.7 Adjusting the outlet

The outlet (7) is height-adjustable. Set the greatest possible distance between the outlet and the vessel. Depending on vessel, push the outlet up or down.

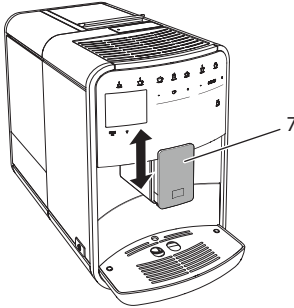


Fig. 11: Height-adjustable outlet

4.8 Using milk

Use cooled milk for optimum coffee enjoyment.

Depending on model, you can use the enclosed milk container or the milk hose and conventional milk packs.

Information

The connection for the milk hose is installed on the right of the outlet in the factory. If you require the connection on the left side, read chapter 8.8 *Converting the connection for the milk hose* on page 84.

Connecting the milk container (depending on model)

Only fill as much milk as you will use immediately into the milk container.

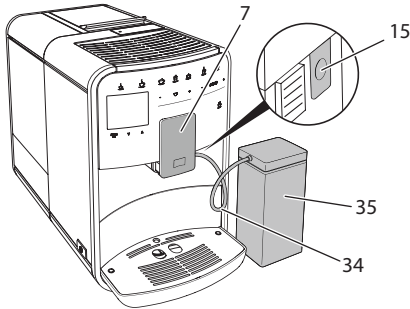


Fig. 12: Connecting the milk container to the appliance

1. Fill the desired amount of milk into the milk container (35).
2. Push the outlet (7) down.
3. Connect the milk hose (34) to the milk container and the connection (15) at the outlet.

Information

Store the filled milk container in the refrigerator.

Connecting the milk hose (depending on model)

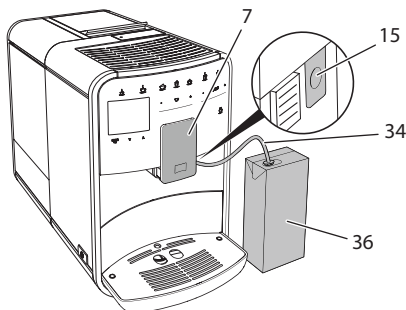


Fig. 13: Connecting the milk hose to the appliance

1. Push the outlet (7) down.
2. Connect the milk hose (34) to the connection (15) at the outlet.
3. Insert the milk hose into a conventional milk pack (36).

4.9 Emptying the drip tray and coffee grounds container

When the drip tray (9) and the coffee grounds container (8) are full, the appliance requests you to empty them. The projecting float (18) also indicates that the drip tray is full. Always empty both containers.

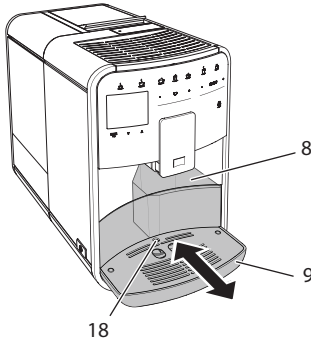


Fig. 14: Drip tray, coffee grounds container and float

1. Pull the drip tray (9) forwards out of the appliance.
2. Remove the coffee grounds container (8) and empty it.
3. Empty the drip tray.
4. Insert the coffee grounds container.
5. Push the drip tray into the appliance to stop.

Information

The appliance requests you to empty the drip tray and the coffee grounds container after a defined number of beverages have been dispensed. If you empty the containers whilst the appliance is switched off, it does not register this process. It may therefore occur that you are requested to empty the containers even though the drip tray and the coffee grounds container are still full.

5 Preparing beverages

There are three options for preparing beverages:

- Standard dispensing,
- Preparation with recipes (see chapter 6.1 *Selecting recipes* on page 75),
- Use of the "My Coffee" function (see chapter 7 *Personal settings – "My Coffee"* on page 77).

Standard dispensing is described in this chapter.

Note:

- The storage containers should contain sufficient amounts of coffee and water. If the filling level is too low, the appliance requests you to refill it.
- The appliance does not indicate a lack of milk.
- The vessels for the beverages should be sufficiently large (see table *Factory settings* on page 95).

5.1 Preparing espresso and café crème



Requirement: The ready symbol appears on the display.



1. Place a vessel beneath the outlet.
2. Press the "Espresso" or "Café crème" button.
 - » The grinding process and beverage dispensing start.
 - » Beverage dispensing is ended automatically.
3. Remove the vessel.
 - » The ready symbol appears on the display.

5.2 Preparing cappuccino



Requirement: The ready symbol appears on the display and milk is connected.

1. Place a vessel beneath the outlet.
2. Press the "Cappuccino" button.
 - » The grinding process and coffee dispensing start.
 - » Coffee dispensing is ended automatically.
 - » Milk dispensing begins.
 - » Beverage dispensing is ended automatically.
3. Remove the vessel.
 - » *Easy Cleaning?* (OK for start) appears in the display.

4. You can execute the Easy Cleaning programme or prepare further beverages.
 - a) Execute the Easy Cleaning programme. Follow the instructions on the display. Information on this is available in chapter 9.4 "Easy Cleaning" programme on page 87.
 - b) Prepare further beverages.
- » The ready symbol appears on the display.

5.3 Preparing latte macchiato



Requirement: The ready symbol appears on the display and milk is connected.

1. Place a vessel beneath the outlet.
 2. Press the "Latte macchiato" button.
 - » Milk dispensing begins.
 - » Milk dispensing is ended automatically.
 - » The grinding process and coffee dispensing start.
 - » Beverage dispensing is ended automatically.
 3. Remove the vessel.
 - » *Easy Cleaning?* (OK for start) appears in the display.
 4. You can execute the Easy Cleaning programme or prepare further beverages.
 - a) Execute the Easy Cleaning programme. Follow the instructions on the display. Information on this is available in chapter 9.4 "Easy Cleaning" programme on page 87.
 - b) Prepare further beverages.
- » The ready symbol appears on the display.

5.4 Preparing milk froth and warm milk

The preparation of milk froth and warm milk is similar.



Requirement: The ready symbol appears on the display and milk is connected.

1. Place a vessel beneath the outlet.
2. Press the "Milk froth/milk" button.
 - a) Milk froth = press button briefly
 - b) Warm milk = press button for longer (2 seconds)
 - » Milk dispensing begins.
 - » Beverage dispensing is ended automatically.
3. Remove the vessel.
 - » *Easy Cleaning?* (OK for start) appears in the display.

4. You can execute the Easy Cleaning programme or prepare further beverages.
 - a) Execute the Easy Cleaning programme. Follow the instructions on the display. Information on this is available in chapter 9.4 "Easy Cleaning" programme on page 87.
 - b) Prepare further beverages.
- » The ready symbol appears on the display.

5.5 Preparing hot water



Requirement: The ready symbol appears on the display.

1. Place a vessel beneath the outlet.
 2. Press the "Hot water" button.
 - » Hot water dispensing begins.
 - » Beverage dispensing is ended automatically.
 3. Remove the vessel.
- » The ready symbol appears on the display.

5.6 Changing beverage settings before and during preparation

You can change beverage settings before and during beverage preparation.

Information

These settings only apply to current beverage preparation.

Changing beverage settings before preparation

You can change the bean type, the total beverage amount and the coffee strength before selecting a beverage.



- Before selecting a beverage, select a bean type with the "BEAN SELECT" slider (3).
- Before selecting a beverage, use the "Beverage amount" slider to set a beverage amount.
- Before selecting a beverage, use the "Coffee strength" slider to set the coffee strength.

Information

- When preparing latte macchiato and cappuccino, the total beverage amount is subdivided into a coffee and a milk amount according to a specified ratio.
- If you do not prepare a beverage within 1 minute, the appliance switches to the default settings.

Changing beverage settings during preparation

You can change the beverage amount and the coffee strength during beverage preparation.



- During beverage dispensing (coffee or milk), use the "Beverage amount" slider to set the relevant beverage amount.
- During the grinding process, use the "Coffee strength" slider to set the coffee strength.

5.7 Stopping beverage preparation

If you want to stop beverage preparation prematurely, press the selected direct key again.

5.8 Preparing two beverages simultaneously



The "2 cups" button is used to prepare two beverages simultaneously. Two-cup dispensing is possible for espresso, cappuccino, café crème and latte macchiato. Two-cup dispensing is not possible for any other type of beverage.

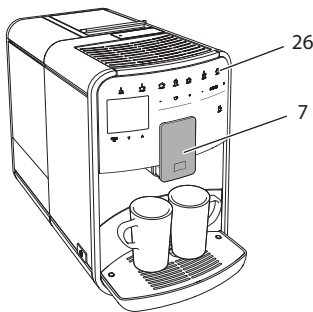


Fig. 15: Two-cup dispensing

1. Place two vessels beneath the outlet (7).
2. Press the "2 cups" button (26).
3. Continue as described for preparation of the relevant beverage.

Information

- The setting only applies to the next beverage which is prepared.
- If you do not prepare a beverage within 1 minute, the appliance switches to single-cup dispensing.

6 Permanently changing beverage settings

The appliance offers further options for preparing coffee specialities. You can use default recipes or permanently change the beverage settings.

6.1 Selecting recipes

The following coffee specialities are available:

- **Espresso:** Espresso (standard), ristretto, lungo, double espresso, double ristretto.
- **Café crème:** Café crème (standard), double café crème, americano, americano extra shot, long black.
- **Cappuccino:** Cappuccino (standard), espresso macchiato, café latte, café au lait.
- **Latte macchiato:** Latte macchiato (standard), latte macchiato extra shot, latte macchiato triple shot, flat white.

Information

The recipe selection remains valid until it is changed again.

Recipe selection is similar for all beverages. The selection of a ristretto is described as an example here.

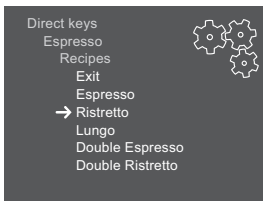


Fig. 16: Recipe selection for ristretto

Requirement: The ready symbol appears on the display.

1. Press the "menu/ok" button for 2 seconds.
 - » The menu appears on the display.
2. Navigate to the *Direct keys > Espresso > Recipes* menu.
3. Use the arrow buttons to select *Ristretto* and confirm with "menu/ok".
4. Repeatedly select the *Exit* command to exit the menu.
 - » The ready symbol appears on the display.
 - » When an espresso is next prepared, the ristretto recipe will be used.

6.2 Changing default settings

You can change the following default settings depending on beverage:

- **Coffee amount:** in millilitres,
- **Froth amount:** in millilitres,
- **Milk amount:** in millilitres,
- **Hot water amount:** in millilitres,
- **Coffee strength:** very mild, mild, normal, strong, very strong,
- **Temperature:** low, normal, high.

Information

The default settings remain valid until they are changed again.

Changing the beverage settings is similar for all beverages. Changing the coffee strength for an espresso is described here as an example.

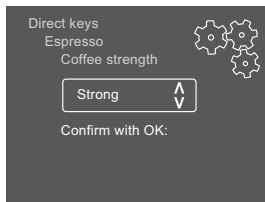


Fig. 17: Setting the coffee strength

Requirement: The ready symbol appears on the display.

1. Press the "menu/ok" button for 2 seconds.
 - » The menu appears on the display.
2. Navigate to the *Direct keys > Espresso > Coffee strength* menu.
3. Use the arrow buttons to select the desired coffee strength and confirm with "menu/ok".

4. Repeatedly select the *Exit* command to exit the menu.
 - » The ready symbol appears on the display.
 - » The selected coffee strength is used the next time an espresso is prepared.

7 Personal settings – "My Coffee"

The "My Coffee" function enables you to save personal beverage settings and assign them to a user.

7.1 Editing personal user profiles

Up to four user profiles can be used.

Changing the name of a user profile

You can change the names of the user profiles.

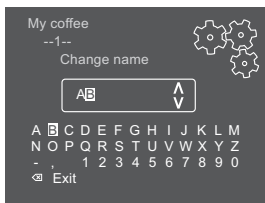


Fig. 18: Changing the name of a user profile

Requirement: The ready symbol appears on the display.

1. Press the "menu/ok" button for 2 seconds.
 - » The menu appears on the display.
2. Navigate to the *My Coffee* menu.
3. Use the arrow buttons to select a user and confirm with "menu/ok".
4. Use the arrow buttons to select *Change name* and confirm with "menu/ok".
 - » The menu for selecting individual characters appears.
5. Use the arrow buttons to select individual characters and confirm each with "menu/ok" (see Fig. 18).
6. Repeatedly select the *Exit* command to exit the menu.
 - » The ready symbol appears on the display.

Activating/deactivating a user profile

You may only use users whose profile is activated.

Requirement: The ready symbol appears on the display.

1. Press the "menu/ok" button for 2 seconds.
 - » The menu appears on the display.
2. Navigate to the *My Coffee* menu.
3. Use the arrow buttons to select a user and confirm with "menu/ok".
4. Use the arrow buttons to select *Enabled/disabled* and confirm with "menu/ok".
5. Use the arrow buttons to select *Enabled* or *Disabled* and confirm with "menu/ok".
6. Repeatedly select the *Exit* command to exit the menu.
 - » The ready symbol appears on the display.

7.2 Selecting/changing personal settings

Depending on beverage, you can assign the following settings to a user:

- **Coffee amount:** in millilitres,
- **Froth amount:** in millilitres,
- **Milk amount:** in millilitres,
- **Hot water amount:** in millilitres,
- **Coffee strength:** very mild, mild, normal, strong, very strong,
- **Temperature:** low, normal, high.

The assignment of personal settings to a user is always similar. Setting the coffee amount for a cappuccino is described here as an example.

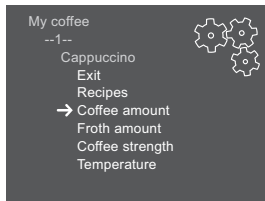


Fig. 19: Changing personal settings

Requirement: The ready symbol appears on the display.

1. Press the "menu/ok" button for 2 seconds.
 - » The menu appears on the display.
2. Navigate to the *My Coffee* menu.
3. Use the arrow buttons to select a user and confirm with "menu/ok".
4. Navigate to the *Cappuccino > Coffee amount* menu.

5. Use the arrow buttons to select an amount and confirm with "menu/ok"
6. Repeatedly select the *Exit* command to exit the menu.
 - » The ready symbol appears on the display.
 - » The next time a cappuccino is prepared by the user, the selected coffee amount is used.

7.3 Preparing beverages with personal settings



The preparation of beverages using the "My Coffee" function is similar for all beverages. The preparation of a cappuccino is described here as an example.

Requirement: The ready symbol appears on the display and milk is connected.

1. Place a vessel beneath the outlet.
2. Press the "My Coffee" button until the desired user is shown on the display.
3. Press the "Cappuccino" button.
 - » The grinding process and coffee dispensing start.
 - » Coffee dispensing is ended automatically.
 - » Milk dispensing begins.
 - » Beverage dispensing is ended automatically.
4. Remove the vessel.
 - » *Easy Cleaning?* (OK for start) appears in the display.
5. You can execute the Easy Cleaning programme or prepare further beverages.
 - a) Execute the Easy Cleaning programme. Follow the instructions on the display. Information on this is available in chapter 9.4 "*Easy Cleaning*" programme on page 87.
 - b) Prepare further beverages.
 - » The ready symbol appears on the display.

Information

- To exit the "My Coffee" function, press the "My Coffee" button until the ready symbol appears.
- If you do not prepare a beverage within 3 minutes, the appliance automatically switches to the ready symbol.

8 Changing basic settings

Operating steps which change the appliance's basic settings are described in the following chapter.

8.1 Setting the language

You can set the display text language.

Requirement: The ready symbol appears on the display.

1. Press the "menu/ok" button for 2 seconds.
 - » The menu appears on the display.
2. Navigate to the *Language* menu.
3. Use the arrow buttons to select a language and confirm with "menu/ok".
4. Exit the menu with the command *Exit*.
 - » The ready symbol appears on the display.

8.2 Setting the time

You can set the time shown on the display.

Requirement: The ready symbol appears on the display.

1. Press the "menu/ok" button for 2 seconds.
 - » The menu appears on the display.
2. Navigate to the *Clock* menu.
3. Use the arrow buttons to select the hours and minutes. Confirm each setting with "menu/ok".
4. Exit the menu with the command *Exit*.
 - » The ready symbol appears on the display.

Information

If you want to prevent the time from being shown on the display, set the time to 00:00.

8.3 Setting Auto OFF

If you do not operate the appliance for a long time, it switches off automatically after a specified time. Set the duration until the appliance switches off in the *Auto OFF* menu. You can also define a specific point in time.

Information

If the duration and point in time are activated simultaneously, the appliance switches off after the event which occurs first.

Setting the duration for Auto OFF

Requirement: The ready symbol appears on the display.

1. Press the "menu/ok" button for 2 seconds.
 - » The menu appears on the display.
2. Navigate to the *Auto OFF > OFF after..* menu.
3. Use the arrow buttons to select a time and confirm with "menu/ok".
4. Repeatedly select the *Exit* command to exit the menu.
 - » The ready symbol appears on the display.

Information

Auto OFF cannot be deactivated completely. After 8 hours without being operated, at the latest, the appliance switches off.

Setting the point in time for Auto OFF

The OFF time point is deactivated as default in the factory.

Requirement: The ready symbol appears on the display.

1. Press the "menu/ok" button for 2 seconds.
 - » The menu appears on the display.
2. Navigate to the *Auto OFF > OFF at..* menu.
3. Use the arrow buttons to select the hours and minutes. Confirm each setting with "menu/ok"
4. Repeatedly select the *Exit* command to exit the menu.
 - » The ready symbol appears on the display.

Information

If you want to deactivate Auto OFF, set the OFF time point to 00:00.

8.4 Setting energy save mode

Energy save mode lowers the heating temperature and switches off the illumination in the control panel. The "menu/ok" button remains lit.

If you do not operate the appliance for a long time, it automatically switches to energy save mode after a specified time. The period of time until energy save mode is activated is set in the *Energy save mode* menu.

Requirement: The ready symbol appears on the display.

1. Press the "menu/ok" button for 2 seconds.
 - » The menu appears on the display.
2. Navigate to the *Energy save mode* menu
3. Use the arrow buttons to select a period of time and confirm with "menu/ok".
4. Exit the menu with the command *Exit*.
 - » The ready symbol appears on the display.

Information

- Energy save mode is ended by pressing the "menu/ok" button.
- Energy save mode cannot be deactivated completely. After 4 hours without being operated, at the latest, the appliance switches to energy save mode.

8.5 Resetting the appliance to the factory settings

The appliance can be reset to the factory settings.

Information

If you reset the appliance to the factory settings, all personal settings are lost, including the settings in the *My Coffee* menu.

Requirement: The ready symbol appears on the display.

1. Press the "menu/ok" button for 2 seconds.
 - » The menu appears on the display.
2. Navigate to the *System > Factory settings* menu.
3. Use the arrow buttons to select *Reset* and confirm with "menu/ok".
4. Repeatedly select the *Exit* command to exit the menu.
 - » The ready symbol appears on the display.

8.6 Displays in the System menu

The *System* menu provides information on the status of the appliance.

The information can be accessed via the *System* > *Statistics* menu and the *System* > *SW version* menu. Press the "menu/ok" button to exit the menus.

The following table provides an overview of the information content.

Menu	Information
<i>Statistics</i>	
<i>Beverages</i>	Number of beverages prepared since starting up.
<i>Brewing unit cleaning</i>	Number of cleaning processes performed.
<i>Descaling</i>	Number of descaling processes performed.
Progress bars	These show the number of beverages which can still be prepared until the appliance requests you to perform cleaning or descaling.
<i>SW version</i>	
MAIN XXXXXXXXXXXX	Installed software version.

8.7 Setting the grinding fineness

The grinding fineness of the coffee beans influences the taste of the coffee. The grinding fineness has been optimally set prior to delivery. We recommend adjusting the grinding fineness after around 1,000 beverages have been dispensed (around 1 year) at the earliest.

ATTENTION

Setting the grinding fineness whilst the grinder is stationary may cause damage to the grinder.

- Only set the grinding fineness whilst the grinder is running.

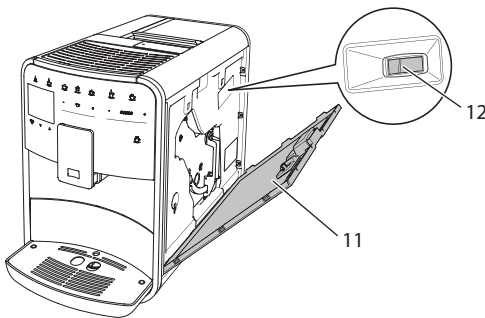


Fig. 20: Setting the grinding fineness

Requirement: The ready symbol appears on the display.

1. Open the cover (11). To do this, reach into the recess on the right of the appliance and pull the cover off upwards.
 2. Prepare any coffee beverage.
 3. Move the lever (12) forwards or backwards whilst the grinder is running.
 - Backwards = grinding fineness coarser
 - Forwards = grinding fineness finer
 4. Close the cover. To do this, insert the bottom of the cover into the appliance and swing it up until it engages.
- » The ready symbol appears on the display.

Information

The grinding fineness is optimally set when the coffee flows evenly out of the outlet and a fine, dense crema appears.

8.8 Converting the connection for the milk hose

The milk hose can be connected on the left or right side of the outlet.

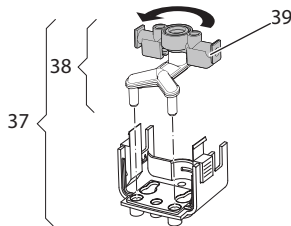


Fig.21: Turning the inlet

Proceed as follows to convert the outlet:

1. Pull the milk hose from the appliance.
2. Push the outlet down as far as it will go.
3. Release the milk unit (37) using two fingers and pull the milk unit downwards off the outlet.
4. Pull the milk distributor (38) upwards out of the milk unit.
5. Turn the inlet (39) 180°.

Installation is carried out similarly in reverse order.

9 Care and maintenance

Regular cleaning and maintenance ensure the consistently high quality of your beverages.

9.1 General cleaning

Clean the appliance regularly. Immediately remove external soiling caused by milk and coffee.

ATTENTION

The use of unsuitable cleaning agents may lead to scratched surfaces.

- Do not use any abrasive cloths, sponges or cleaning agents.
-

Requirement: The appliance is switched off.

- Clean the outside of the appliance using a soft, damp cloth and normal washing up liquid.
- Rinse the drip tray and the coffee grounds container using a soft, damp cloth and normal washing up liquid.
- Clean the bean container using a soft, dry cloth.

9.2 Rinsing the coffee system

During rinsing, the nozzles at the outlet and the internal parts of the coffee system are rinsed. As a result, rinsing water from the interior enters the drip tray.

When switching on and off, the appliance rinses the coffee system.

Rinsing can also be carried out manually.

Requirement: The ready symbol appears on the display.

1. Place a vessel beneath the outlet.
2. Press the "menu/ok" button for 2 seconds.
 - » The menu appears on the display.
3. Navigate to the *Care > Rinsing* menu.
4. Use the arrow buttons to select *Start* and confirm with "menu/ok".
 - » The coffee system is rinsed.
 - » The ready symbol appears on the display.

9.3 Cleaning the brewing unit

To avoid damage to the appliance, we recommend cleaning the brewing unit once a week.

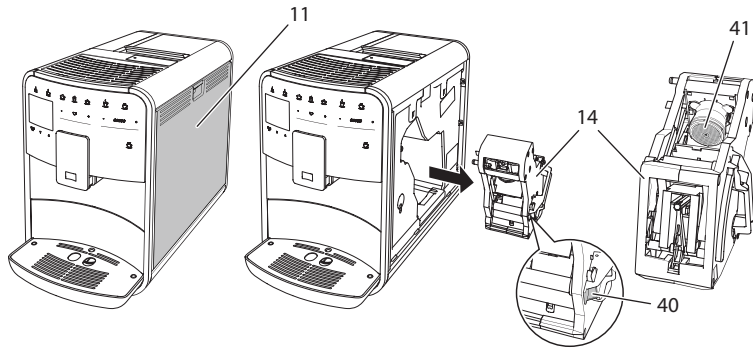


Fig. 22: Removing the brewing unit

Requirement: The appliance is switched off.

1. Open the cover (11). To do this, reach into the recess on the right of the appliance and pull the cover off upwards.
2. Press and hold the red lever (40) on the brewing unit handle (14) and turn the handle clockwise until it engages at the stop.
3. Pull the brewing unit out of the appliance using the handle.
4. Rinse the entire brewing unit thoroughly from all sides under running water. Make particularly sure that coffee residues are removed from the sieve (41).
5. Allow the brewing unit to drip dry.
6. Use a soft, dry cloth to remove coffee residues from the surfaces inside the appliance.
7. Insert the brewing unit into the appliance. Press and hold the red lever on the brewing unit handle and turn the handle counter clockwise until it engages at the stop.
8. Close the cover. To do this, insert the bottom of the cover into the appliance and swing it up until it engages.

9.4 "Easy Cleaning" programme

The milk system is rinsed using the "Easy Cleaning" programme.

Each time after preparing a beverage with milk, the appliance requests you to execute the "Easy Cleaning" programme.

You can also run the "Easy Cleaning" programme manually.

Requirement: The ready symbol appears on the display.

1. Place a vessel beneath the outlet.
2. Press the "menu/ok" button for 2 seconds.
 - » The menu appears on the display.
3. Navigate to the *Care > Easy Cleaning* menu.
4. Use the arrow buttons to select *Start* and confirm with "menu/ok".
5. Follow the further instructions on the display up to the end of the "Easy Cleaning" programme.
 - » The ready symbol appears on the display.

9.5 "Cleaning milk system" programme

With this programme, the milk system is cleaned using a milk system cleaning agent.

To maintain hygiene and avoid damage to the appliance, we recommend carrying out the cleaning programme once a week.

The cleaning programme takes approximately 3 minutes and should not be interrupted.

ATTENTION

Use of unsuitable milk system cleaning agents may cause damage to the appliance.

- Use Melitta® PERFECT CLEAN Espresso Machines milk system cleaning agent exclusively.

Requirement: The ready symbol appears on the display.

1. Place a vessel with a capacity of at least 0.7 litres beneath the outlet.
2. Press the "menu/ok" button for 2 seconds.
 - » The menu appears on the display.
3. Navigate to the *Care > Cleaning milk system* menu.
4. Use the arrow buttons to select *Start* and confirm with "menu/ok".
5. Follow the further instructions on the display up to the end of the intensive cleaning programme.
 - » The ready symbol appears on the display.

Cleaning the milk unit

We additionally recommend regularly cleaning the milk unit, the milk hose and the milk container (depending on model).

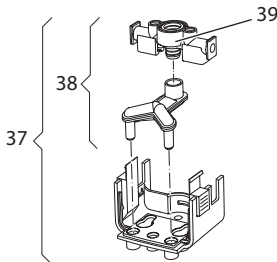


Fig. 23: Removing the milk unit

Proceed as follows to remove the milk unit:

1. Pull the milk hose from the appliance.
2. Push the outlet down as far as it will go.
3. Release the milk unit (37) using two fingers and pull the milk unit downwards off the outlet.
4. Pull the milk distributor (38) upwards out of the milk unit.
5. Pull the inlet (39) out upwards.
6. Clean the individual parts with warm water. Use the enclosed cleaning brush, a soft, damp cloth and normal washing up liquid.

Installation is carried out similarly in reverse order.

Information

The milk container (depending on model) is dishwasher-safe.

9.6 "Cleaning coffee system" programme

This cleaning programme is used to remove residues and coffee oil residues using coffee machine cleaning agents.

To avoid damage to the appliance, we recommend carrying out the cleaning programme every 2 months or as requested by the appliance.

The cleaning programme takes approximately 15 minutes and should not be interrupted.

⚠ CAUTION

Contact with coffee machine cleaning agent may lead to eye and skin irritation.

- Observe the processing instructions on the coffee machine cleaning agent packaging.

ATTENTION

Use of unsuitable coffee machine cleaning agents may damage the appliance.

- Use Melitta® PERFECT CLEAN Espresso Machines cleaning tablets exclusively.

Requirement: The ready symbol appears on the display.

1. Press the "menu/ok" button for 2 seconds.
 - » The menu appears on the display.
2. Navigate to the *Care > Cleaning* menu.
3. Use the arrow buttons to select *Start* and confirm with "menu/ok".
4. Follow the further instructions on the display up to the end of the cleaning programme.
 - » The ready symbol appears on the display.

9.7 "Descaling" programme

The descaling programme is used to remove limescale deposits in the interior of the appliance using coffee machine descaling agents.

To avoid damage to the appliance, we recommend carrying out the descaling programme every 3 months or as requested by the appliance.

The descaling programme takes approximately 25 minutes and should not be interrupted.

⚠ CAUTION

Contact with descaling agent may lead to eye and skin irritation.

- Observe the processing instructions on the descaling agent packaging.

ATTENTION

Use of unsuitable descaling agents may damage the appliance.

- Use Melitta® ANTI CALC Espresso Machines liquid descaling agent exclusively.

ATTENTION

A water filter may be damaged if it is screwed in during the descaling programme.

- Remove the water filter before starting the descaling programme (see chapter 9.9 *Using a water filter* on page 91).
- Place the water filter into a vessel filled with tap water during the descaling programme.
- The water filter can be reinserted and reused on completion of the descaling programme.

Requirement: The ready symbol appears on the display.

1. Press the "menu/ok" button for 2 seconds.
 - » The menu appears on the display.
2. Navigate to the *Care > Descaling* menu.
3. Use the arrow buttons to select *Start* and confirm with "menu/ok".
4. Follow the further instructions on the display up to the end of the descaling programme.
 - » The ready symbol appears on the display.

9.8 Setting the water hardness

The set water hardness influences the frequency of descaling. The harder the water, the more frequently the appliance has to be descaled.

Information

The water hardness cannot be set if you use a water filter (see chapter 9.9 *Using a water filter* on page 91).

Determine the water hardness with the enclosed test strip. Observe the instructions on the test strip packaging and in table *Water hardness range* on page 95.

Requirement: The ready symbol appears on the display.

1. Press the "menu/ok" button for 2 seconds.
 - » The menu appears on the display.
2. Navigate to the *Water hardness* menu using the arrow buttons
3. Use the arrow buttons to select the water hardness range and confirm with "menu/ok".
4. Exit the menu with the command *Exit*.
 - » The ready symbol appears on the display.

9.9 Using a water filter

Use of a water filter extends the service life of the appliance and the appliance has to be descaled less frequently. The water filter contained in the scope of delivery filters calcium and other pollutants out of the water.

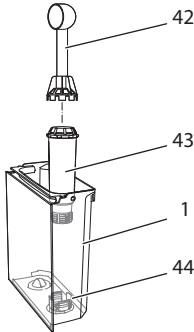


Fig. 24: Screwing/unscrewing the water filter

The water filter (43) is screwed into and unscrewed from the thread (44) on the base of the water tank (1) using the screwing aid at the end of the enclosed coffee spoon (42).

Inserting the water filter

Information

Place the water filter into a vessel filled with fresh tap water for a few minutes before inserting it.

Requirement: The ready symbol appears on the display.

1. Press the "menu/ok" button for 2 seconds.
 - » The menu appears on the display.
2. Navigate to the *Care > Filter > Insert filter* menu.
3. Use the arrow buttons to select *Start* and confirm with "menu/ok".
4. Follow the further instructions on the display.
 - » The water hardness is automatically set to *Soft*.
 - » The ready symbol appears on the display.

Changing the water filter

Change the water filter when the appliance requests you to do so.

Requirement: The ready symbol appears on the display.

1. Press the "menu/ok" button for 2 seconds.
 - » The menu appears on the display.
2. Navigate to the *Care > Filter > Change filter* menu.
3. Use the arrow buttons to select *Start* and confirm with "menu/ok".
4. Follow the further instructions on the display.
 - » The ready symbol appears on the display.

Removing the water filter

The water filter should not be left standing dry for a long period of time. When it is not used for a long time, we recommend storing the water filter in a vessel filled with tap water in the refrigerator.

Requirement: The ready symbol appears on the display.

1. Press the "menu/ok" button for 2 seconds.
 - » The menu appears on the display.
2. Navigate to the *Care > Filter > Remove filter* menu.
3. Use the arrow buttons to select *Start* and confirm with "menu/ok".
4. Follow the further instructions on the display.
 - » The water hardness is automatically reset to the previous setting.
 - » The ready symbol appears on the display.

10 Problems

If the actions listed below fail to rectify the problems or other problems not listed here occur, contact our hotline (local rate).

Germany: +49 (0)571/ 861 900

Problem	Cause	Action
Coffee only emerges from the outlet in drips.	Grinding fineness too fine.	<ul style="list-style-type: none"> Set a coarser grinding fineness (see chapter 8.7 on page 83).
	Appliance soiled.	<ul style="list-style-type: none"> Clean the brewing unit (see chapter 9.3 on page 86). Run the cleaning programme (see chapter 9.6 on page 88).
	Appliance calcified.	<ul style="list-style-type: none"> Descalcify the appliance (see chapter 9.7 on page 89).
Coffee does not flow.	Water tank not filled or inserted incorrectly.	<ul style="list-style-type: none"> Fill the water tank and ensure it is positioned correctly (see chapter 4.6 on page 67).
	Brewing unit clogged.	<ul style="list-style-type: none"> Clean the brewing unit (see chapter 9.3 on page 86).
<i>Fill beans</i> appears on the display although the bean container is filled.	Beans do not drop into the grinder.	<ul style="list-style-type: none"> Tap lightly on the bean container. Clean the bean container. Coffee beans too oily. Use different coffee beans.
	"BEAN SELECT" slider is in the centre position.	<ul style="list-style-type: none"> Move the "BEAN SELECT" slider to the right or left.
Loud grinder noise.	Foreign object in the grinder.	<ul style="list-style-type: none"> Contact the hotline.
Brewing unit cannot be inserted after removing.	Brewing unit is not locked correctly.	<ul style="list-style-type: none"> Check whether the handle for the brewing unit locking mechanism is correctly engaged (see chapter 9.3 on page 86).
	Drive is not in the correct position.	<ul style="list-style-type: none"> Press and hold the "My Coffee" button. Also press the ON/OFF button. The appliance initialises. Release the buttons again.
<i>System error</i> appears on the display.	Software problem	<ul style="list-style-type: none"> Switch the appliance off and on again (see chapter 4.1 on page 61). Contact the hotline.

11 Transport, storage and disposal

11.1 Venting the appliance

We recommend venting the appliance when it is not used for a long while, prior to transport and when there is a risk of frost.

During venting, remaining water is removed from the appliance.

Requirement: The ready symbol appears on the display.

1. Press the "menu/ok" button for 2 seconds.
 - » The menu appears on the display.
2. Navigate to the *System > Venting* menu.
3. Select *Start* using the arrow buttons and confirm with "menu/ok".
4. Follow the further instructions on the display.
 - » The appliance switches off.

11.2 Transporting the appliance

ATTENTION

Freezing remaining water may damage the appliance.

- Prevent the appliance from being exposed to temperatures below 0°C.

Information

Transport the appliance in the original packaging. This avoids damage in transit.

Before transporting the appliance, carry out the following activities:

1. Vent the appliance (see chapter 11.1 *Venting the appliance* on page 94).
2. Empty the drip tray and the coffee grounds container.
3. Empty the water tank.
4. Empty the bean container.
5. Clean the appliance (see chapter 9.1 *General cleaning* on page 85).
6. Secure loose parts (cup plate, etc.) with suitable adhesive tape.
7. Package the appliance.

11.3 Disposing of the appliance



Appliances marked with this symbol are subject to European Directive 2002/96/EC for WEEE (Waste Electrical and Electronic Equipment).

Electrical appliances do not belong in domestic waste.

- Dispose of the appliance in an environmentally friendly manner via suitable collection systems.

12 Technical data

Technical data	
Operating voltage	220 V to 240 V, 50 Hz
Power consumption	Max. 1450 W
Pump pressure	Static, max. 15 bar
Dimensions	
Width	255 mm
Height	365 mm
Depth	465 mm
Capacity	
Bean container	2 × 135 g
Water tank	1.8 l
Weight (empty)	10.1 kg
Ambient conditions	
Temperature	10°C to 32°C
Relative humidity	30% to 80% (non-condensing)

Water hardness range	°dH	°f
Soft	0 to 7.2	0 to 13
Medium	7.2 to 14	13 to 25
Hard	14 to 21.2	25 to 38
Very hard	> 21.2	>38

Factory settings		
Espresso	Beverage amount	40 ml
	Coffee strength	Strong
	Brewing temperature	Normal
Café crème	Beverage amount	120 ml
	Coffee strength	Strong
	Brewing temperature	Normal

Factory settings		
Cappuccino	Beverage amount	130 ml
	Coffee strength	Strong
	Brewing temperature	Normal
Latte macchiato	Beverage amount	190 ml
	Coffee strength	Strong
	Brewing temperature	Normal
Milk	Froth amount	120 ml
	Milk amount	120 ml
Hot water	Beverage amount	120 ml



Melitta Europa GmbH & Co. KG
Division Household Products
Ringstr. 99
D-32427 Minden
Germany
www.melitta.de

Editorial department:
ZINDEL AG
www.zindel.de