

# INSTALLATION MANUAL PROTECTIVE GLASS FOR MULTISYNC<sup>®</sup> LCD4020, LCD4620 AND LCD5220



Product used for demonstration in this manual: LCD4020

**NECESSARY COMPONENTS:**

- 1 piece protective glass (supplied)
- brackets (supplied) (40"-11pcs, 46"-13pcs, 52"-12 pcs)
- tape, "3M VHB tape 9473" or equivalent (not supplied)
- tape, "Scotchfoam 4718 3,2/12,7mm" or equivalent (not supplied)

1.1) Lay LCD on a mat as in Fig.1 (in order not to damage LCD).

1.2) Remove STAND (if used) and BEZEL (Number of screws that hold the STAND is 2 pieces. Number of screws that hold the BEZEL is 12 pieces.)



Figure 1

2.1) Remove the part of the rear cover indicated in figure 2.1 and the BRACKET PWB IR. (Number of the screws that hold the rear cover is 3 pieces.)

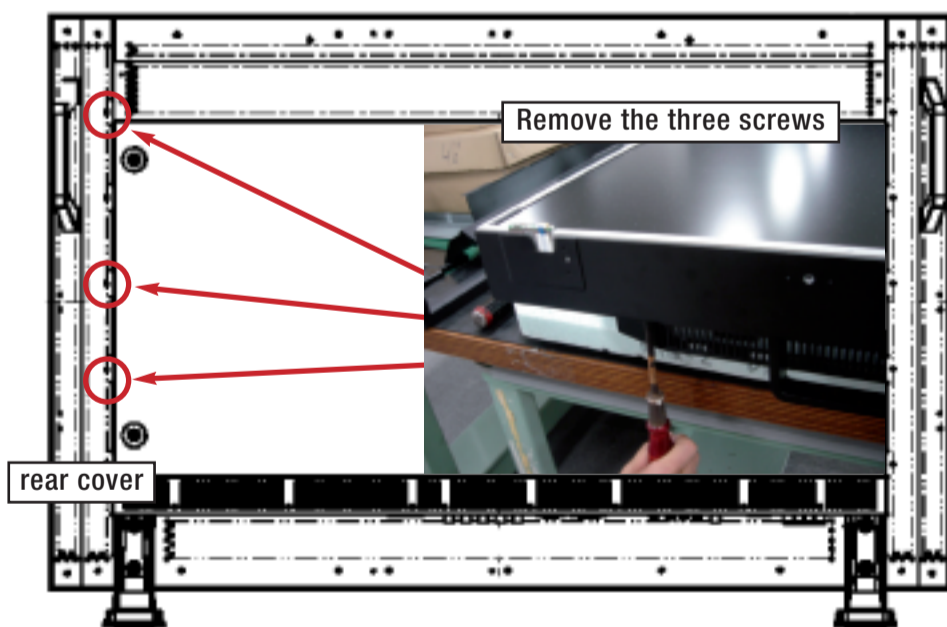


Figure 2.1

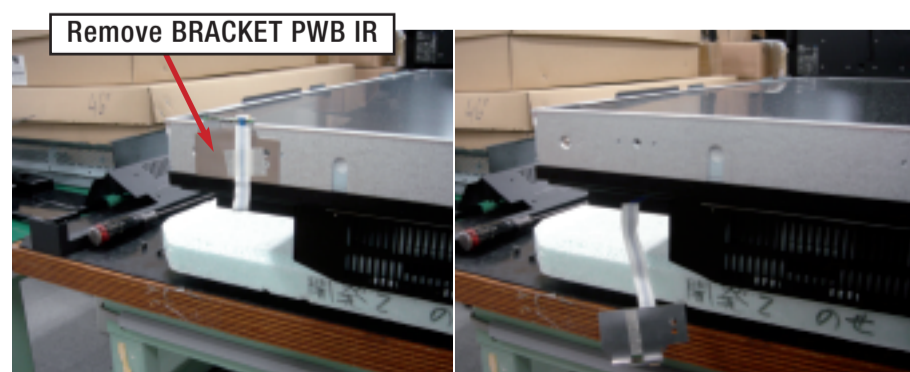


Figure 2.2

3.1) Paste TAPE-1 (DOUBLE sided ADHESIVE TAPE) and peel the paper off. Specification of TAPE-1 should be equivalent to "3M VHB tape 9473".

- NOTE:** 1. Do not paste TAPE-1 on panel's active area.  
2. Do not paste TAPE-1 on the area in Fig. 3.2.

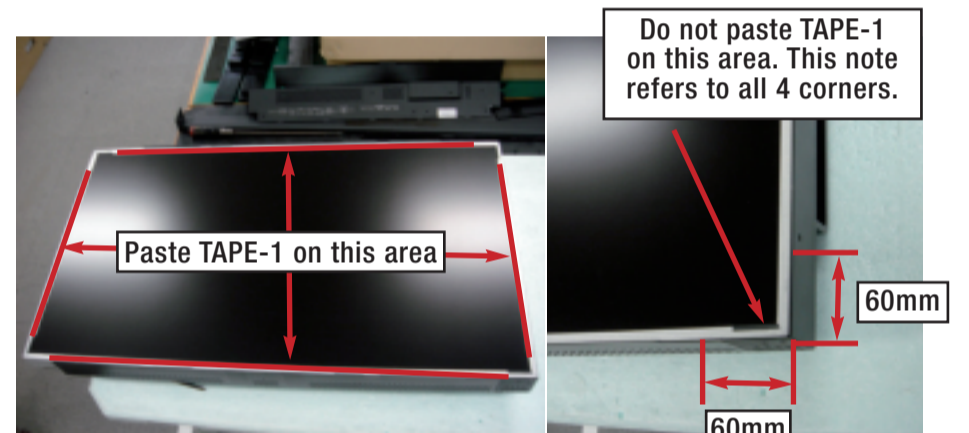


Figure 3.1

Figure 3.2

3.2) Put protective glass on the panel.

- NOTE:** Align edge (refer to Fig. 3.4).



Figure 3.3

Figure 3.4

3.3) Reinstall the BRACKET PWB IR and rear cover.

- (Number of screws that hold the rear cover is 3 pieces.)

- NOTE:** Adjust the position of BRACKET PWB IR to the lower hole.

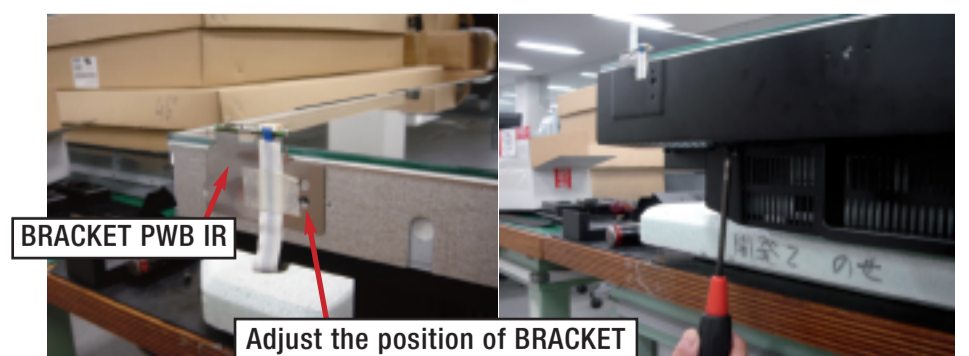


Figure 3.5

4.1) Paste TAPE-2 (DOUBLE sided ADHESIVE TAPE) on BRACKET-4 and peel off the paper.  
 (Number of BRACKET-4 is 11 pieces.) Specification of TAPE-2 should be equivalent to "3M VHB tape 9473".  
 NOTE: Do not paste TAPE-2 on the holes.

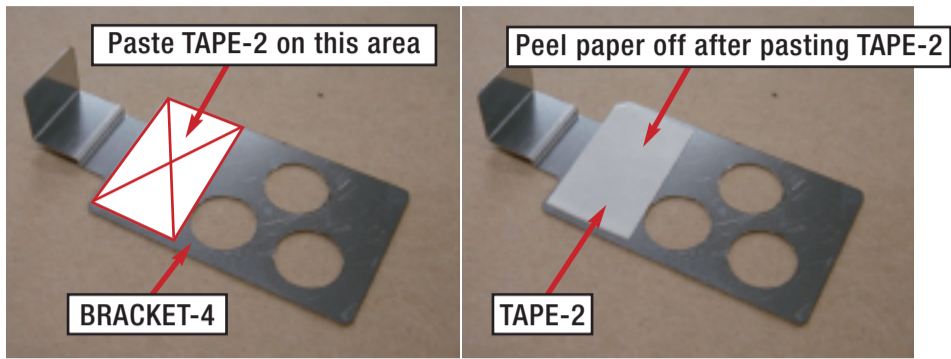


Figure 4.1

4.2) Paste 11 pieces of BRACKET-4 to panel.  
 NOTE: 1. Adjust the position of BRACKET-4 to the upper hole in case of POSITION A.  
 2. Adjust the position of BRACKET-4 to the lower hole in case of POSITION B.

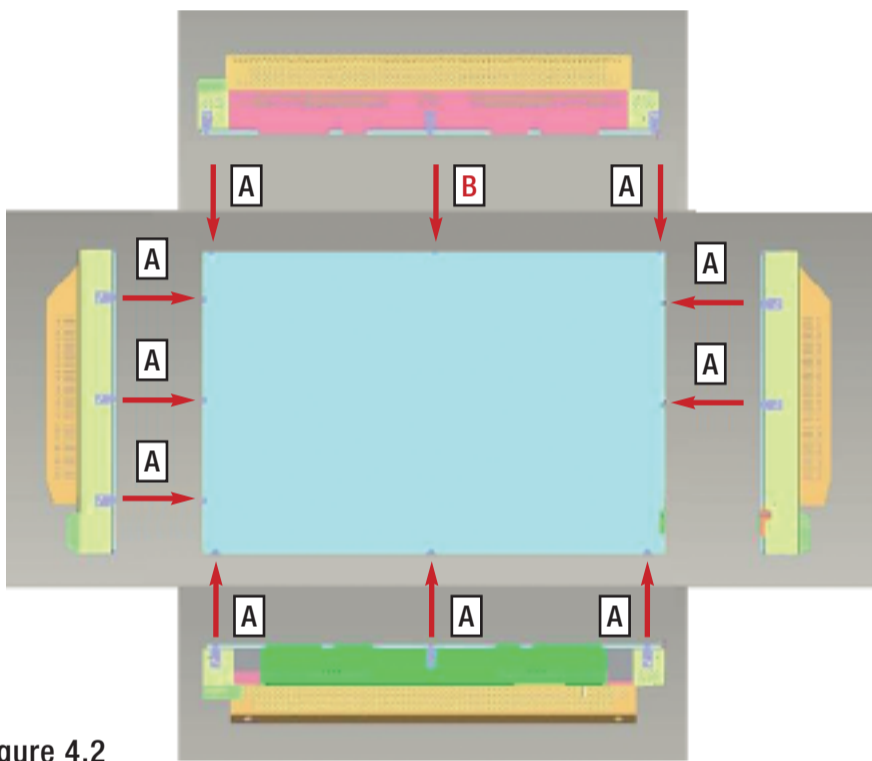


Figure 4.2

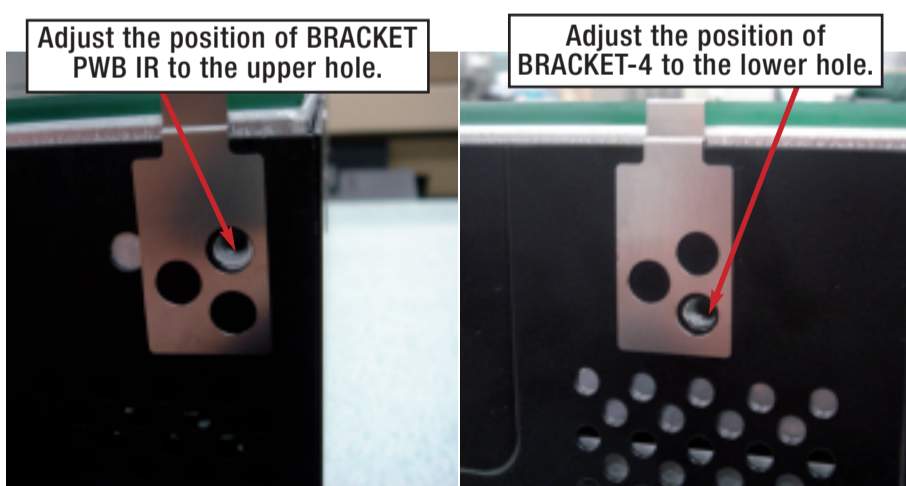


Figure 4.3 Position A

Position B



Figure 4.4

5.1) Paste TAPE-3. Specification of TAPE-3 should be equivalent to "Scotchfoam 4718 3,2/12,7mm". Ideal Size: 5mm (H) X 10mm (W) (Fig. 5.2) NOTE: Align the edges of the panel and the glass (refer to Fig.5.1). 2. Carefully move the BRACKET PWB IR as in Fig. 5.3, when pasting TAPE-3.

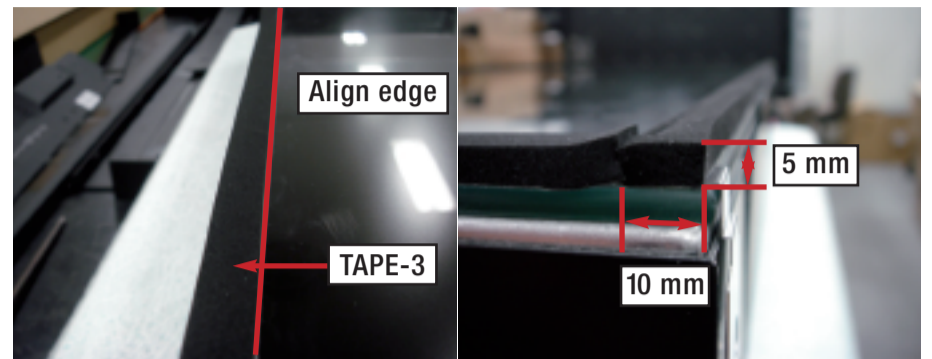


Figure 5.1

Figure 5.2



Figure 5.3



Figure 5.4

6.1) Install screws and put screw labels back on.  
 (Number of screws that hold BEZEL is 12 pieces.  
 Number of labels is 12 pieces.)

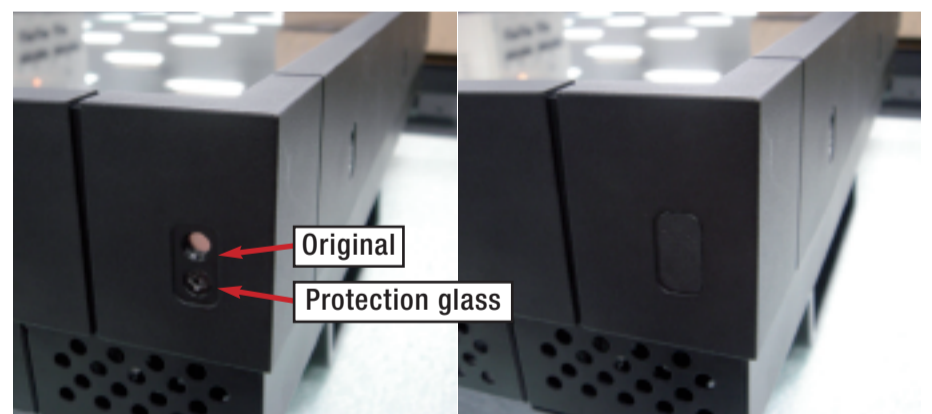


Figure 6.1

Figure 6.2

6.2) Finish



Figure 6.3