

# Мы всегда готовы помочь!

Зарегистрируйте свое устройство и получите поддержку на  
[www.philips.com/welcome](http://www.philips.com/welcome)

AW5000

Возник вопрос?  
Обратитесь в  
Philips



## Руководство пользователя

# PHILIPS



# Содержание

<b>1 Важная информация!</b>	2
Техника безопасности	2
Уведомление	3
<b>2 Беспроводная AC Hi-Fi</b>	4
Введение	4
Комплектация	4
Что вам потребуется	4
Описание основного устройства	5
<b>3 Подготовка к работе</b>	6
Загрузка приложения Philips AirStudio на смартфон или планшетный ПК	6
Подключение питания и включение	7
<b>4 Подключение AW5000 к домашней сети Wi-Fi</b>	9
Вариант 1. Настройка беспроводного подключения к маршрутизатору без WPS с помощью устройства на платформе iOS	9
Вариант 2. Настройка с помощью устройства на платформе Android и маршрутизатора Wi-Fi без WPS	12
Вариант 3. Настройка беспроводного подключения на маршрутизаторе WPS	14
Вариант 4. Настройка проводного подключения с помощью кабеля Ethernet	16
<b>5 Воспроизведение</b>	17
Потоковая передача звука на AW5000	17
Прослушивание интернет-радио на AW5000	20
Воспроизведение с внешнего устройства	24
<b>6 Обновление ПО</b>	25
<b>7 Сведения об изделии</b>	27
Характеристики	27
<b>8 Устранение неисправностей</b>	28
<b>9 Приложение 1. Настенный монтаж устройства</b>	30
<b>10 Приложение 2. Значения светодиодных индикаторов</b>	31

# 1 Важная информация!

## Техника безопасности

Информация для стран Европы  
Ознакомьтесь с приведенными  
обозначениями безопасности.



Наличие символа "восклицательный знак" указывает на необходимость подробного изучения прилагаемой документации, что в дальнейшем поможет избежать проблем с работой или обслуживанием устройства. Символ "молния" указывает на наличие в изделии неизолированных компонентов, контакт с которыми может привести к поражению электрическим током. Во избежание пожара или поражения электрическим током не допускайте попадания внутрь устройства воды или влаги. Запрещается ставить на устройство сосуды с жидкостью, например вазы.

- 1 Ознакомьтесь с данными инструкциями.
- 2 Сохраните данные инструкции.
- 3 Обратите внимание на все предупреждения.
- 4 Следуйте всем указаниям.
- 5 Запрещается использовать данное устройство вблизи воды.

- 6 Очищайте устройство только сухой тканью.
- 7 Запрещается блокировать вентиляционные отверстия устройства. Устанавливайте устройство в соответствии с инструкциями производителя.
- 8 Запрещается снимать корпус устройства.
- 9 Не допускайте попадания на поверхность устройства капель/брызг. Запрещается использовать изделие под дождем и в условиях высокой влажности.
- 10 Не подвергайте устройство воздействию прямых солнечных лучей, открытых источников огня и высоких температур.
- 11 Запрещается устанавливать устройство вблизи источников тепла, таких как батареи отопления, обогреватели, кухонные плиты и другие нагревательные электроприборы (включая усилители).
- 12 Запрещается устанавливать на устройство другие электрические устройства.
- 13 Не помещайте на устройство потенциально опасные предметы (например, сосуды с жидкостями, зажженные свечи).
- 14 Если шнур питания или штепсель используются для отключения устройства, доступ к ним должен оставаться свободным.

### Предупреждение

- Запрещается снимать корпус устройства.
- Запрещается смазывать детали устройства.
- Запрещается устанавливать устройство на другие электрические устройства.
- Не подвергайте устройство воздействию прямых солнечных лучей, открытых источников огня и высоких температур.
- Убедитесь, что обеспечен легкий доступ к сетевому шнуру, вилке или адаптеру для отключения устройства от электросети.

Риск перегрева! Никогда не устанавливайте устройство в ограниченном пространстве. Оставьте не менее 10 см свободного пространства вокруг устройства для обеспечения вентиляции. Убедитесь, что занавески или другие объекты не закрывают вентиляционные отверстия устройства.

## Уведомление

# CE 0560

Данное изделие соответствует требованиям Европейского Союза по радиопомехам. Данный продукт соответствует требованиям директивы 1999/5/EC.

### Модификации

Модификации, внесенные без согласия производителя, могут привести к утрате пользователем права на использование этого устройства.



Изделие разработано и изготовлено с применением высококачественных деталей и компонентов, которые подлежат переработке и повторному использованию.



Маркировка символом перечеркнутого мусорного бака означает, что данное изделие попадает под действие директивы Европейского совета 2002/96/EC. Узнайте о раздельной утилизации электротехнических и электронных изделий согласно местному законодательству. Действуйте в соответствии с местными правилами и не выбрасывайте отработавшее изделие вместе с бытовыми отходами.

Правильная утилизация отработавшего изделия поможет предотвратить возможные негативные последствия для окружающей среды и здоровья человека.

### Информация о влиянии на окружающую среду

Продукт не имеет лишней упаковки. Мы попытались сделать так, чтобы упаковочные материалы легко разделялись на три типа: картон (коробка), пенополистерол (буфер) и полиэтилен (мешки, защитный пенопластовый лист).

Материалы, из которых изготовлена система, могут быть переработаны и вторично использованы специализированными предприятиями. Соблюдайте местные нормативы по утилизации упаковочных материалов, выработавших ресурс батареек и отслужившего оборудования. Android является товарным знаком компании Google. Использование этого товарного знака допускается с разрешения компании Google.

### Символ оборудования Class II:



Приборы КЛАССА II с двойной изоляцией и без защитного заземления.



#### Примечание

- Табличка с обозначениями расположена на нижней панели устройства.

## 2 Беспроводная АС Hi-Fi

Поздравляем с покупкой, и добро пожаловать в клуб Philips! Чтобы воспользоваться всеми преимуществами поддержки Philips, зарегистрируйте устройство на веб-сайте [www.philips.com/welcome](http://www.philips.com/welcome).

При обращении в представительство компании Philips необходимо назвать номер модели и серийный номер устройства.

Серийный номер и номер модели указаны на нижней панели устройства. Впишите эти номера здесь:

Номер модели \_\_\_\_\_

Серийный номер \_\_\_\_\_

---

### Введение

При помощи этой беспроводной акустической системы Hi-Fi вы сможете:

- выполнять потоковую передачу звука с устройств на базе iOS или Android;
- прослушивать интернет-радиостанции и получать доступ к музыкальным онлайн-сервисам.
- выполнять потоковую передачу звука с ПК/Mac с установленным ПО Media Manager (доступно для загрузки по адресу: [www.philips.com/mediamanager](http://www.philips.com/mediamanager));
- воспроизводить музыку с других аудиоустройств через разъем **MP3-LINK**.

---

### Комплектация

Проверьте комплектацию устройства.

- Беспроводная АС Hi-Fi со встроенным модулем Wi-Fi
- Адаптер питания переменного тока - 1 шт.
- Краткое руководство
- Паспорт безопасности

---

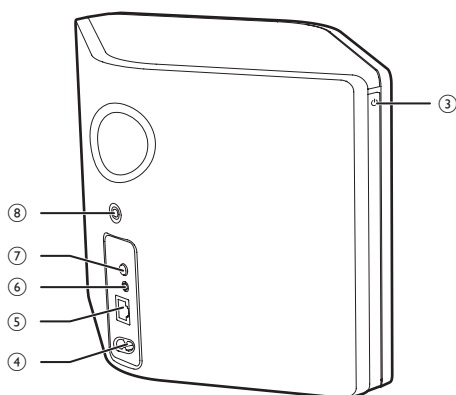
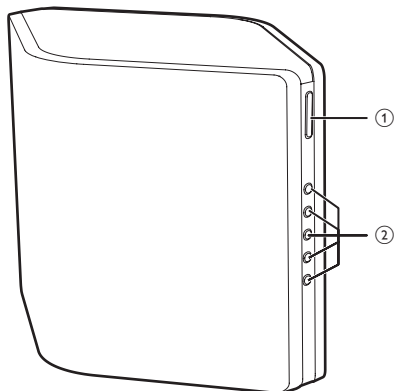
### Что вам потребуется

Для беспроводной потоковой передачи звука на AW5000 вам потребуется:

- сертифицированный маршрутизатор Wi-Fi;
- устройство с iOS или ОС Android, например iPod touch/iPhone/iPad либо смартфон или планшетный ПК Android; или ПК/Mac с поддержкой Wi-Fi;
- приложение **Philips AirStudio**, доступное для загрузки в Apple **App Store** (для устройств с iOS) или в Google **Play Store** (для устройств на базе Android).

AW5000 необходимо подключить через маршрутизатор Wi-Fi к той же локальной сети, что и устройство iOS/Android или ПК/Mac.

## Описание основного устройства



- ① +/-
  - Регулировка громкости.
- ② Клавиши с цифрами (от 1 до 5)
  - Выбор интернет-станции.
- ③ Индикатор/кнопка питания  $\phi$ 
  - Отображение текущего состояния устройства.
  - Переключение устройства в обычный режим ожидания/режим ожидания Eco.
- ④ AC IN ~
  - Подключение шнура питания.

- ⑤ ETHERNET
  - Необязательно: подключение к беспроводному маршрутизатору с помощью кабеля Ethernet (не входит в комплект).
- ⑥ MP3-LINK
  - Подключение внешнего аудиоплеера через кабель MP3 link (кабель не входит в комплект).
- ⑦ Кнопка WI-FI SETUP
  - Подключение устройства к сети Wi-Fi.
- ⑧ Отверстие для винта для настенного монтажа



### Совет

- Подробную информацию о настенном монтаже см. в Приложении 1 (см. 'Приложение 1. Настенный монтаж устройства' на стр. 30).

# 3 Подготовка к работе

Всегда следуйте инструкциям, приведенным в данной главе.

## Загрузка приложения Philips AirStudio на смартфон или планшетный ПК

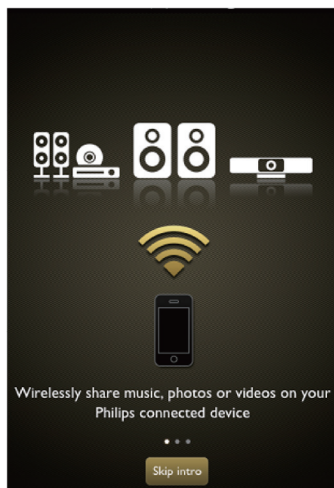
- 1 Для пользователей iPod touch/iPhone/iPad: установите приложение **Philips AirStudio** (доступно в интернет-магазине Apple App Store) и запустите его.



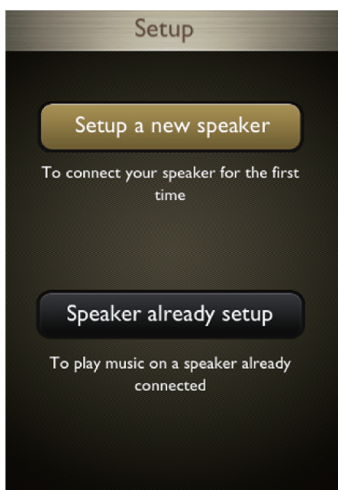
Для пользователей смартфонов и планшетных ПК на платформе Android: установите приложение **Philips AirStudio** (доступно в интернет-магазине Google Play) и запустите его.



- 2 Для просмотра введения прокрутите вправо, затем перейдите на главную страницу настройки **Setup** (Настройка). Для перехода непосредственно на главную страницу настройки **Setup** (Настройка) выберите пункт **Skip intro** (Пропустить заставку).



- 3 На главной странице настройки **Setup** (Настройка) выберите пункт **Setup a new speaker** (Настроить новую АС).



- 4 Ознакомьтесь с основными инструкциями по настройке и нажмите **Next** (Далее).



## Подключение питания и включение

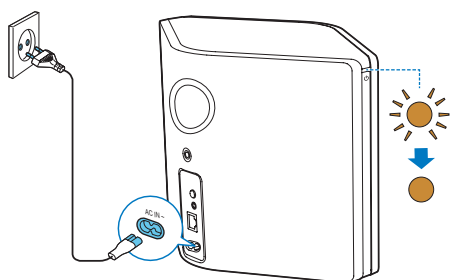
### ! Внимание

- Риск повреждения устройства! Убедитесь, что напряжение электросети соответствует напряжению, указанному на нижней панели устройства.
- Риск поражения электрическим током! При отключении шнура питания переменного тока от электросети тяните только за вилку. Не тяните за шнур питания.
- Перед подключением шнура питания переменного тока убедитесь, что все остальные подключения выполнены.

- 1 Ознакомьтесь с инструкциями по подключению к источнику питания в приложении.



- 2 Подключите шнур питания к:
- разьему **AC IN** ~ на задней панели устройства;
  - розетке электросети.
- ↳ Устройство включится автоматически.
- ↳ Индикатор питания/состояния во время загрузки будет мигать оранжевым светом.
- ↳ Через некоторое время при первоначальной настройке индикатор питания/состояния загорится оранжевым светом.



- Для выхода из обычного режима ожидания или режима ожидания Eco и включения устройства снова нажмите и быстро отпустите кнопку/индикатор питания над значком  $\Phi$ .

	Действие	Состояние индикатора
Устройство включено -> Обычный режим ожидания	Нажмите кнопку/индикатор питания над значком $\Phi$ .	Желтый/белый -> Зеленый
Устройство включено/обычный режим ожидания <-> Режим ожидания Eco	Нажмите и удерживайте кнопку/индикатор питания над значком $\Phi$ не более 3 секунд.	Желтый/белый или зеленый -> Выкл.
Обычный режим ожидания Eco -> Включение устройства	Нажмите кнопку/индикатор питания над значком $\Phi$ .	Зеленый/выкл. -> Желтый/белый

- 3 Чтобы продолжить, в окне приложения нажмите **Next** (Далее).

#### Переключение между обычным режимом ожидания и режимом ожидания Eco

- Чтобы переключить устройство в обычный режим ожидания, нажмите и быстро отпустите кнопку/индикатор питания над значком  $\Phi$ .
  - ↳ Индикатор питания/состояния загорится зеленым светом.
- Чтобы переключить устройство в режим ожидания Eco, нажмите и удерживайте кнопку/индикатор питания над значком  $\Phi$  не более 3 секунд.
  - ↳ Индикатор питания/состояния сначала загорится желтым светом, а затем выключится.

## 4 Подключение AW5000 к домашней сети Wi-Fi

Чтобы подключить устройство AW5000 к существующей домашней сети Wi-Fi, необходимо применить настройки домашней сети Wi-Fi к AW5000. Выберите наиболее подходящий способ настройки в зависимости от ваших условий.

ОС мобильного устройства	Тип маршрутизатора Wi-Fi	Другие требования	Метод настройки
iOS	Без WPS	Нет	Выберите вариант 1.
Android	Без WPS	Нет	Выберите вариант 2.
Или iOS или Android	WPS	Нет	Выберите вариант 3.
Или iOS или Android	Без WPS или с WPS	У вас есть кабель Ethernet.	Выберите вариант 4.

Перед подключением системы AW5000 к домашней сети Wi-Fi проверьте соблюдение следующих условий:

- 1 маршрутизатор Wi-Fi подключен к электросети и работает должным образом;
- 2 система AW5000 подключена к электросети, и ее загрузка выполнена успешно.
- 3 вы записали пароль Wi-Fi.

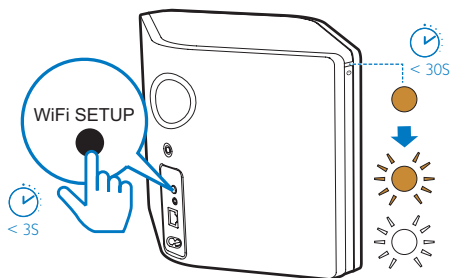
После успешного подключения AW5000 запомнит настройки домашней сети Wi-Fi. Теперь вы можете прослушивать музыку или интернет-радиостанции с помощью приложения **Philips AirStudio**, если устройство AW5000 включено и подключается к сети Wi-Fi автоматически.

### Вариант 1. Настройка беспроводного подключения к маршрутизатору без WPS с помощью устройства на платформе iOS

- 1 Перед началом настройки убедитесь, что устройство iOS подключено к домашней сети Wi-Fi.
- 2 Ознакомьтесь с инструкциями по настройке сети Wi-Fi в приложении.



- 3 Следуя указаниям, нажмите и быстро отпустите кнопку **WI-FI SETUP** на задней панели устройства AW5000.
- ↳ Индикатор питания/состояния начнет попеременно мигать оранжевым и белым светом.
  - ↳ Отобразится созданная устройством AW5000 сеть Wi-Fi с сетевым именем (SSID) **Philips\_Install**.



- 4 Выберите пункт **Next** (Далее) в верхнем окне приложения и ознакомьтесь с этапами настройки сети.



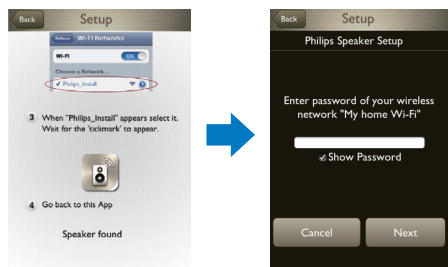
- 5 Следуя указаниям, выйдите из приложения и выберите **Philips\_Install** из списка доступных сетей Wi-Fi.



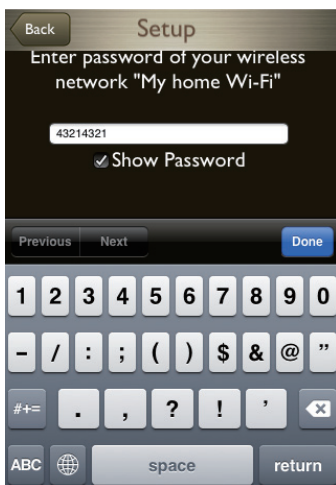
- 6 Убедитесь, что устройство iOS подключено к сети **Philips\_Install**, а затем вернитесь в приложение **Philips AirStudio**.

- 7 Дождитесь появления сообщения **Speaker found** (АС найдена) в нижней части верхнего окна приложения.

- ↳ Через некоторое время появится поле ввода пароля.

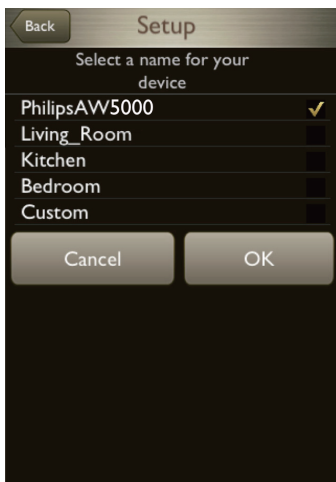


- 8 Введите пароль для доступа к домашней сети Wi-Fi, нажмите **Done** (Готово) по завершении ввода, а затем нажмите **Next** (Далее).

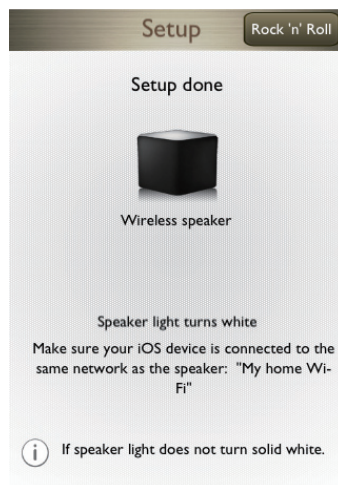


\* Если пароль для сети Wi-Fi содержит специальные символы, такие как #/:;/', его необходимо изменить.

- 9 Укажите имя акустической системы (на выбор) и нажмите **OK**, чтобы подключить устройство AW5000 к домашней сети Wi-Fi.



- 10 Дождитесь, когда индикатор питания/состояния на устройстве AW5000 загорится белым светом.
- ↳ Появятся следующие окна приложения.
  - ↳ Устройство AW5000 успешно подключено к домашней сети Wi-Fi.



#### Совет

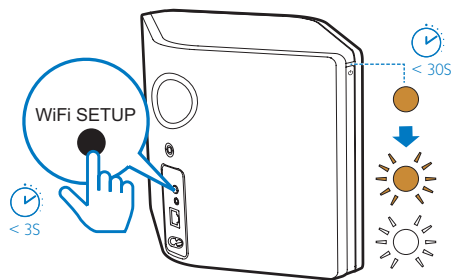
- После успешной настройки сети в верхнем окне приложения можно выбрать пункт **Rock n' Roll** (Рок-н-ролл) для воспроизведения музыки. Для получения дополнительной информации перейдите в раздел "Воспроизведение" (см. "Воспроизведение" на стр. 17).

## Вариант 2. Настройка с помощью устройства на платформе Android и маршрутизатора Wi-Fi без WPS

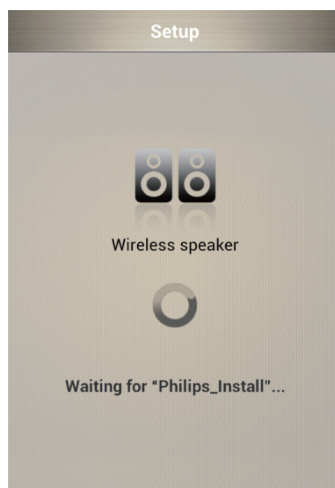
- 1 Перед началом настройки убедитесь, что устройство Android подключено к домашней сети Wi-Fi.
- 2 Ознакомьтесь с инструкциями по настройке сети Wi-Fi в приложении.



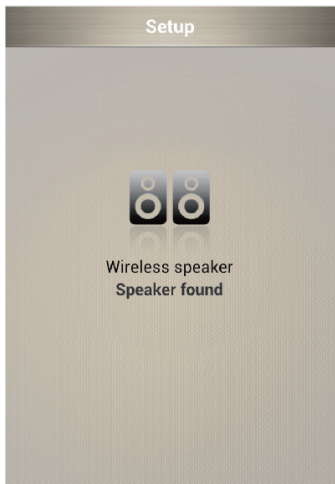
- 3 Следуя указаниям, нажмите и быстро отпустите кнопку **WI-FI SETUP** на задней панели устройства AW5000.
  - ↳ Индикатор питания/состояния начнет попеременно мигать оранжевым и белым светом.
  - ↳ Отобразится созданная устройством AW5000 сеть Wi-Fi с сетевым именем (SSID) **Philips\_Install**.



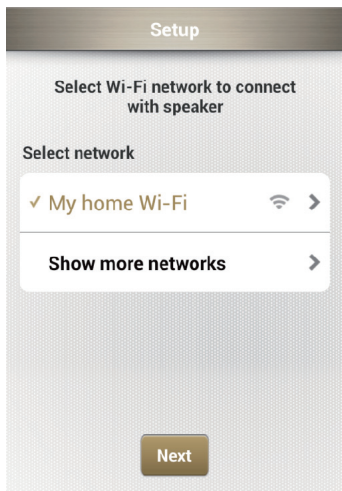
- 4 В верхнем окне приложения нажмите **Next** (Далее).
  - ↳ Подключение устройства Android к новой сети Wi-Fi, созданной при помощи устройства AW5000, будет выполнено автоматически.



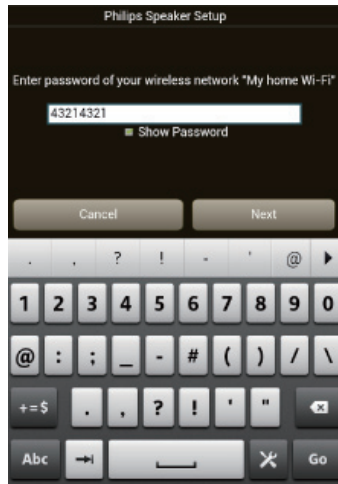
- 5 Дождитесь, когда будет обнаружена акустическая система.



- 6 Выберите домашнюю сеть Wi-Fi и нажмите **Next** (Далее).

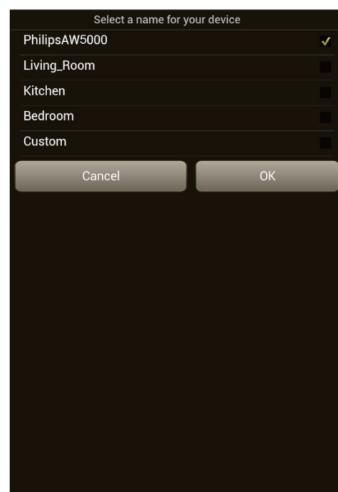


- 7 Введите пароль домашней сети Wi-Fi и нажмите **Next** (Далее).

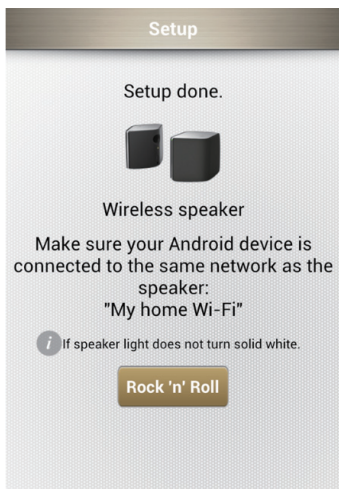


- \* Если пароль для сети Wi-Fi содержит специальные символы, такие как #/:/!", его необходимо изменить.

- 8 Укажите имя акустической системы (на выбор) и нажмите **OK**, чтобы подключить устройство AW5000 к домашней сети Wi-Fi.



- 9 Дождитесь, когда индикатор питания/состояния на устройстве AW5000 загорится белым светом.
- ↳ Появятся следующие окна приложения.
  - ↳ Устройство AW5000 успешно подключено к домашней сети Wi-Fi.



### Примечание

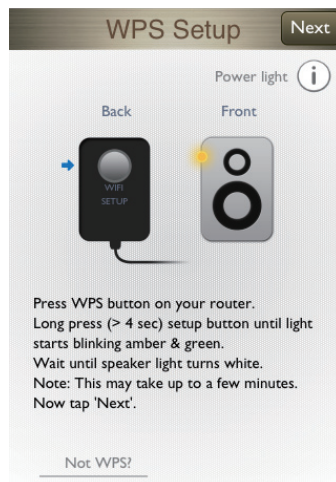
- После успешной настройки сети можно запустить воспроизведение музыки; для этого в верхнем окне приложения выберите, например, **Rock n' Roll** (Рок-н-ролл). Для получения дополнительной информации перейдите в раздел "Воспроизведение" (см. 'Воспроизведение' на стр. 17).

## Вариант 3. Настройка беспроводного подключения на маршрутизаторе WPS

- 1 Выберите пункт **WPS Setup?** (Настройка WPS?) в окне приложения.

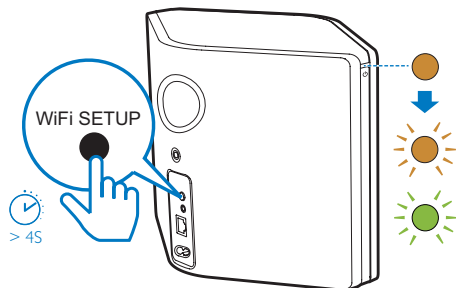


- 2 Ознакомьтесь с инструкциями по настройке с помощью технологии WPS.

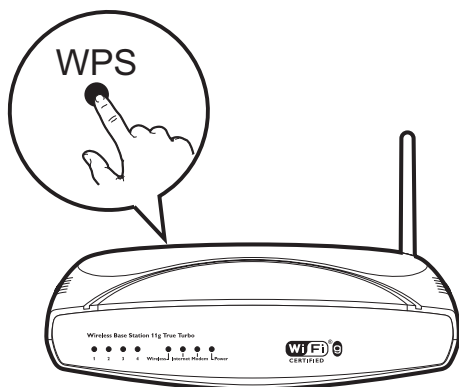


- 3 Следуя указаниям, нажмите и удерживайте кнопку **WI-FI SETUP** на задней панели устройства AW5000.

↳ Индикатор питания/состояния начнет попеременно мигать оранжевым и зеленым светом.



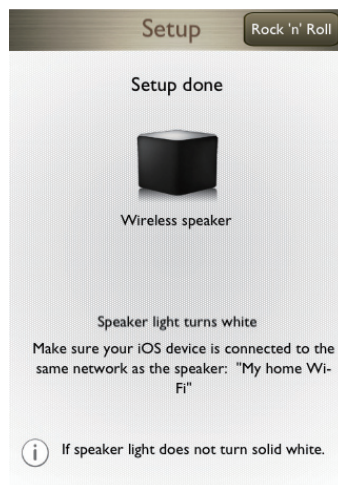
- 4 Нажмите на маршрутизаторе Wi-Fi кнопку WPS.



- 5 Дождитесь, пока индикатор питания/состояния на устройстве AW5000 загорится белым светом, а затем нажмите **Next** (Далее) в окне приложения.

↳ Появятся следующие окна приложения.

↳ Устройство AW5000 успешно подключено к домашней сети Wi-Fi.



#### Совет

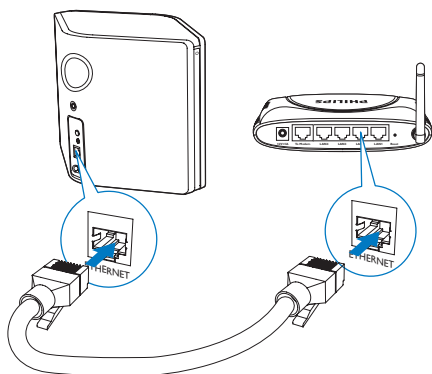
- При использовании некоторых маршрутизаторов Wi-Fi может потребоваться удержание кнопки WPS для подключения Wi-Fi или включение функции WPS PBC со страниц конфигурации маршрутизатора. Более подробную информацию см. в руководстве по эксплуатации маршрутизатора.
- После успешной настройки сети можно запустить воспроизведение музыки; для этого в верхнем окне приложения выберите, например, **Rock n' Roll** (Рок-н-ролл). Для получения дополнительной информации перейдите в раздел "Воспроизведение" (см. "Воспроизведение" на стр. 17).

## Вариант 4. Настройка проводного подключения с помощью кабеля Ethernet

### Примечание

- Если используется проводное подключение, нужно просто выбрать пункт *Speaker already setup* (АС уже настроена) на странице первоначальной настройки (см. 'Загрузка приложения Philips AirStudio на смартфон или планшетный ПК' на стр. 6).

- 1 Если перед настройкой проводного подключения использовалось беспроводное подключение, необходимо перезагрузить беспроводную акустическую систему Hi-Fi (см. 'Устранение неисправностей' на стр. 28).
- 2 Подключите кабель Ethernet (не входит в комплект) к:
  - разъему **ETHERNET** на задней панели устройства;
  - одному из Ethernet-портов на домашнем маршрутизаторе Wi-Fi.



- 3 Дождитесь, когда индикатор питания/состояния загорится белым светом.  
↳ Устройство AW5000 успешно подключено к домашней сети Wi-Fi.

## 5 Воспроизведе- ние

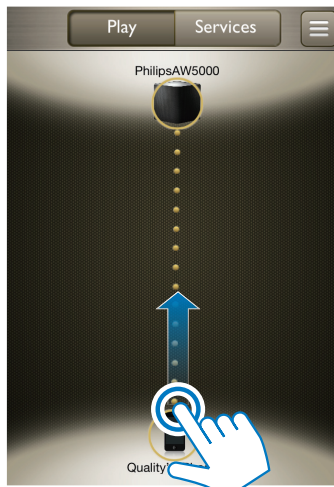
### Потоковая передача звука на AW5000

#### Потоковая передача со смартфона или планшетного ПК iOS или Android

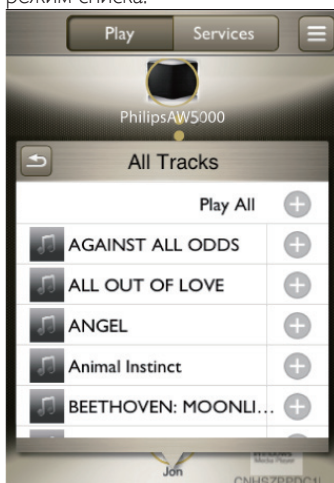
- 1 Убедитесь, что устройство iOS/Android подключено к той же сети Wi-Fi, что и AW5000.
- 2 На смартфоне или планшетном ПК iOS или Android запустите приложение **Philips AirStudio**.
- 3 Если указанное окно не появилось, выберите пункт **Speaker already setup** (АС уже настроена) на странице первоначальной **настройки**.
  - ↳ На смартфоне или планшетном ПК начнется поиск акустической системы в той же сети Wi-Fi.



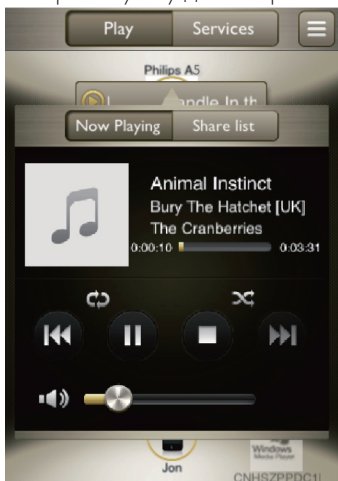
- 4 После появления значков устройства и акустической системы перетащите значок устройства к АС для установления соединения между ними.



- 5 Для отображения музыки, доступной для потоковой передачи, выберите режим списка.



6 Выберите музыку для воспроизведения.



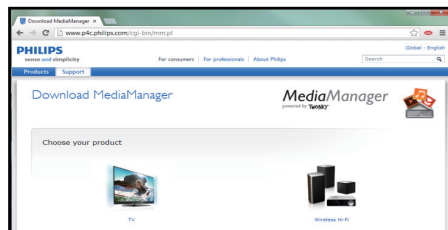
### Совет

- Если индикатор питания/состояния мигает белым светом, значит, звук на акустической системе отключен. Для возобновления передачи звука настройте уровень громкости на акустической системе или на устройстве (OS/Android).
- Если на этапе 3 значок устройства или акустической системы не появился, для обновления экрана нажмите **☰** -> **↻ Refresh** (Обновить).

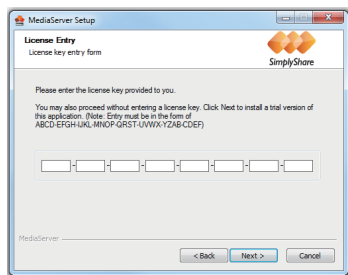
## Потоковая передача с ПК/Мас

Для передачи музыки с ПК/Мас на устройство AW5000 в потоковом режиме на ПК/Мас сначала необходимо установить программу передачи медиаданных с сертификатом DLNA (например, Media Manager на веб-сайте [www.philips.com/mediamanager](http://www.philips.com/mediamanager) или медиаплеер Windows Media 11+). После этого ПК/Мас будет работать в качестве медиасервера, передавая музыку на беспроводную акустическую систему Hi-Fi.

1 Загрузите Media Manager с веб-сайта [www.philips.com/mediamanager](http://www.philips.com/mediamanager):



2 Установите Media Manager на ПК/Мас, указав лицензионный ключ, имеющийся в кратком руководстве.



3 Убедитесь, что AW5000 и ПК/Мас подключены к одной сети Wi-Fi.

4 Запустите Media Manager на ПК/Мас.

5 Выберите источник музыки.



- 6 Выберите AW5000 в качестве медиаплеера.



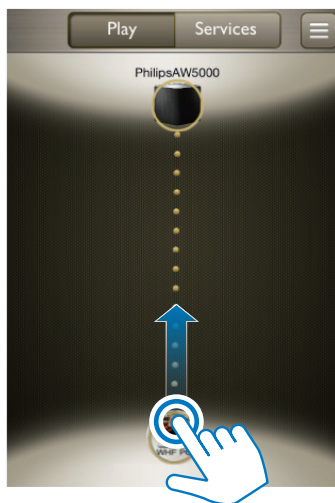
- 7 Выберите композицию из списка, чтобы начать воспроизведение.



Управлять воспроизведением музыки можно также с устройства iOS/Android.

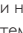
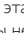
- 1 Убедитесь, что устройство iOS/Android и ПК/Мас подключены к той же сети Wi-Fi, что и AW5000.
- 2 Запустите **Philips AirStudio** на устройстве iOS или Android.

- 3 Для установки соединения Wi-Fi, удерживая значок Media Manager на экране устройства, переместите его в направлении АС.



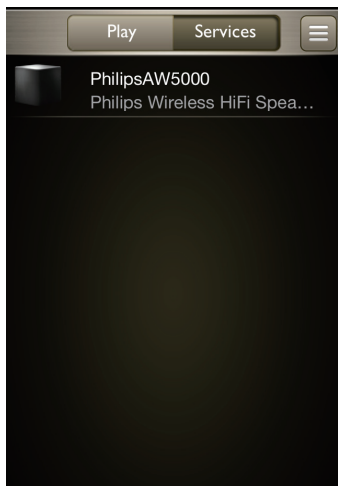
- 4 Для отображения музыки, доступной для потоковой передачи, нажмите значок Media Manager.
- 5 Выберите композицию из списка, чтобы начать воспроизведение.

#### Совет

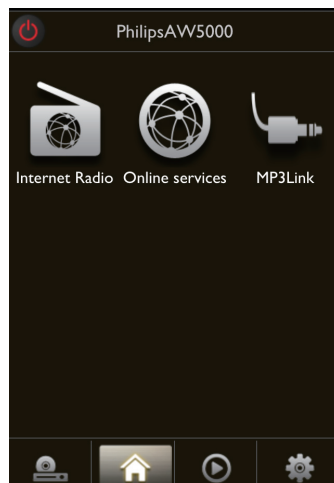
- Для отображения музыки с ПК/Мас на устройстве iOS/Android может потребоваться больше времени.
- Если на этапе 3 значок устройства или акустической системы не появился, для обновления экрана нажмите  ->  Refresh (Обновить).

## Прослушивание интернет-радио на AW5000

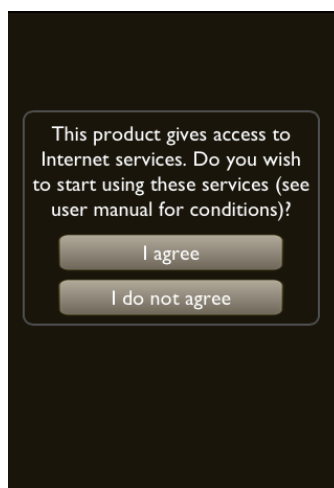
- 1 На смартфоне или планшете ПК iOS или Android запустите приложение **Philips AirStudio**.
- 2 Для перехода на домашнюю страницу выберите **Services** (Службы) ->**Philips AW5000**.



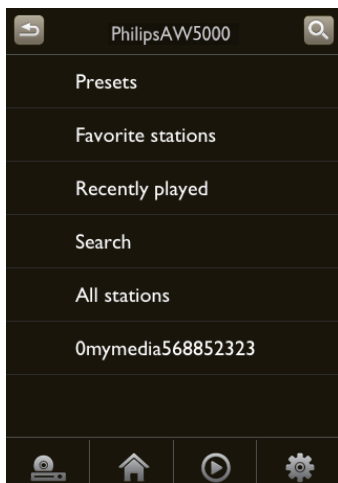
- 3 Для выбора интернет-радио в качестве источника на домашней странице нажмите **Internet radio** (Интернет-радио).



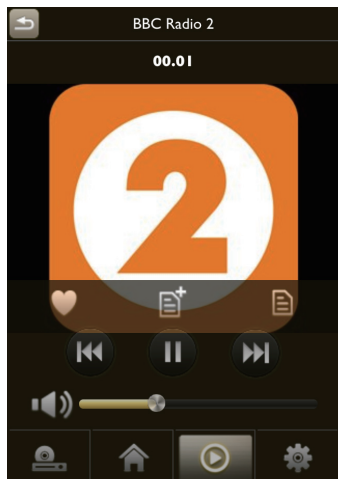
- 4 Чтобы разрешить подключение к Интернету, при появлении следующего сообщения нажмите **I agree** (Принимаю).




- 5 Найдите интернет-радиостанцию (поиск по названию, местоположению, языку и пр).

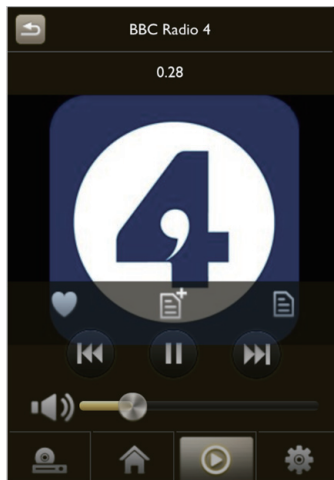


- 6 Чтобы включить радиостанцию, выберите ее название в результатах поиска.



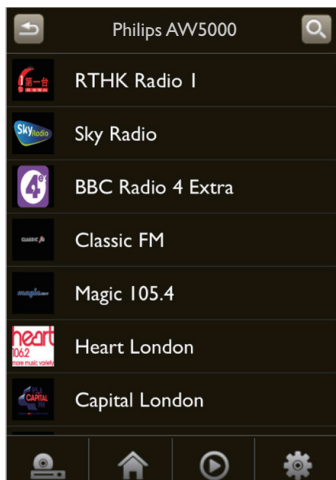
## Предустановленные интернет-радиостанции

- 1 Включите интернет-радиостанцию и нажмите .
- ↳ Появится список предустановленных радиостанций.



- 2 Выберите в списке ряд, в который необходимо добавить предустановленную станцию. Например, если вы хотите присвоить станции номер 2, выберите второй ряд.

↳ Появится сообщение с названием станции и номером предустановленной станции.



- 3 Для подтверждения нажмите **OK** в окне сообщения.

↳ Станция будет добавлена в список предустановленных радиостанций.



- 4 Чтобы добавить другие предустановленные станции, повторите шаги, описанные выше.

#### Совет

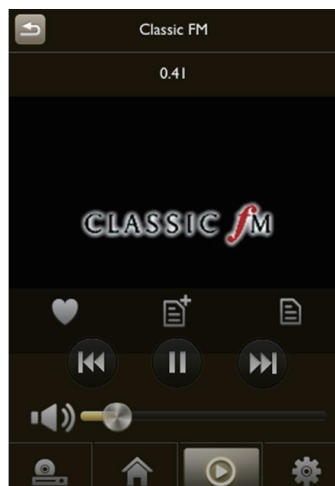
- Удалить предустановленную радиостанцию нельзя, но ее можно заменить другой станцией. Например, чтобы удалить радиостанцию, сохраненную под номером 3, необходимо выбрать другую радиостанцию, нажать **OK**, а затем нажать на третий ряд, чтобы заменить предыдущую станцию.

#### Выбор предустановленной радиостанции

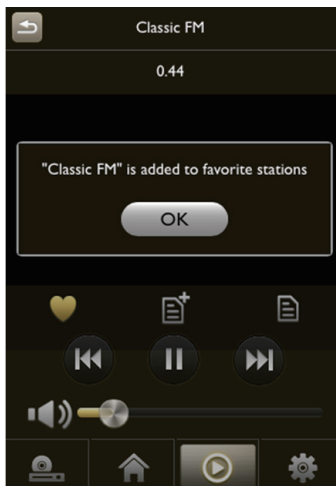
- Для быстрого выбора первых пяти радиостанций используйте **кнопки с цифрами (от 1 до 5)** на устройстве AW5000.
- Вы также можете выбрать предустановленную станцию в окне приложения в разделе **Presets** (Предустановленные станции).

#### Создание списка избранных радиостанций

- 1 Выберите интернет-радиостанцию.



- 2 Чтобы добавить радиостанцию в список избранных, нажмите ♥.



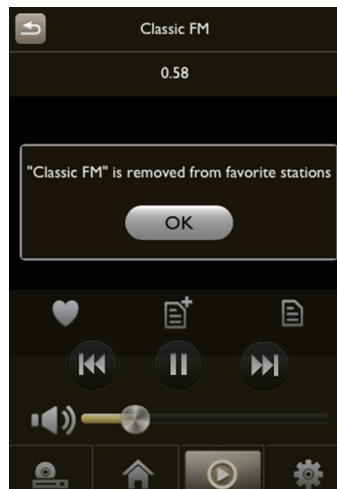
- 3 Чтобы добавить другие станции в список избранных, повторите шаги, описанные выше.

#### Выбор радиостанции в списке избранных

- На экране приложения выберите **Favorite stations** (Избранные радиостанции), коснитесь радиостанции из списка избранного для начала воспроизведения.

#### Удаление радиостанции из списка избранных

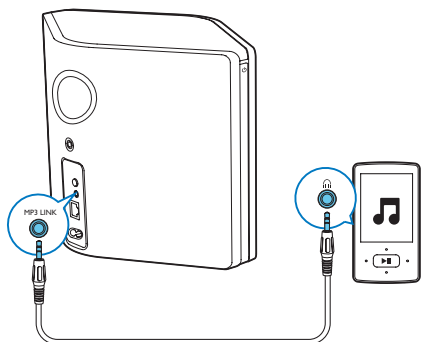
- 1 Включите интернет-радиостанцию и нажмите ♥.
- ↳ Радиостанция будет удалена из списка избранных.



## Воспроизведение с внешнего устройства

На устройстве можно также воспроизводить звук с внешнего аудиоплеера.

- 1 Подключите кабель MP3 link (не входит в комплект) к:
  - разъему **MP3-LINK** на задней панели устройства;
  - разъему для наушников на внешнем аудиоплеере.

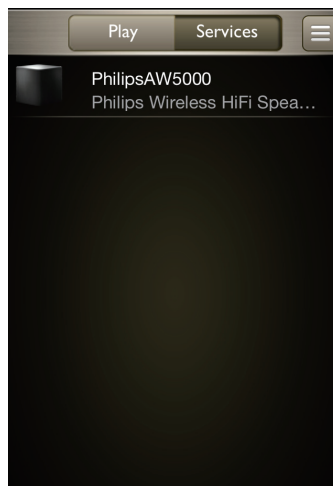


- 2 Включите воспроизведение на внешнем аудиоплеере и настройте громкость.
  - ↳ На беспроводной акустической системе Hi-Fi начнется воспроизведение музыки.
- 3 Для управления воспроизведением используйте элементы управления аудиоплеера.

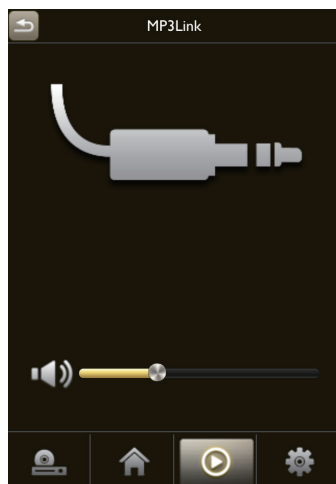
### Выбор источника MP3 link вручную

- 1 На смартфоне или планшетном ПК iOS или Android запустите приложение **Philips AirStudio**.

- 2 Для перехода на домашнюю страницу выберите **Services** (Службы) -> **Philips AW5000**.



- 3 Для выбора источника MP3 link на домашней странице нажмите **MP3 link**.



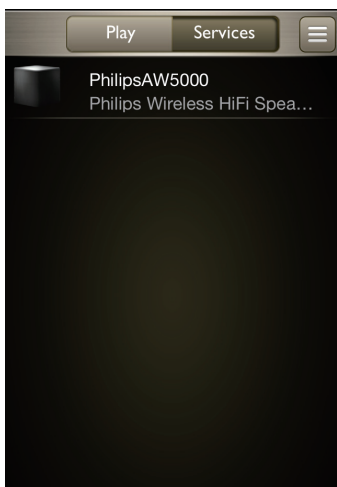
## 6 Обновление ПО

Чтобы повысить качество работы AW5000, компания Philips может предложить новое ПО для обновления AW5000.

### Предупреждение

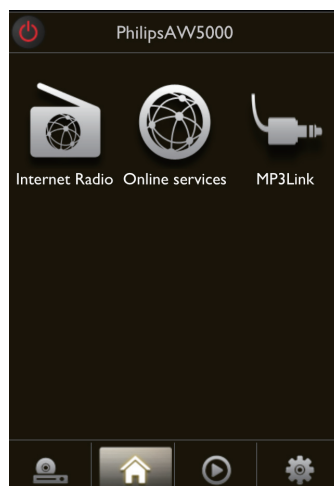
- Для обновления ПО всегда подключайте AW5000 к источнику переменного тока. Не отключайте питание во время обновления ПО AW5000.

- 1 Убедитесь, что AW5000 включен и подключен к той же сети Wi-Fi, что и смартфон или планшетный ПК.
- 2 Убедитесь, что домашняя сеть Wi-Fi подключена к Интернету.
- 3 На смартфоне или планшетном ПК iOS или Android запустите приложение **Philips AirStudio**.
- 4 Для перехода на домашнюю страницу выберите **Services** (Службы) -> **Philips AW5000**.



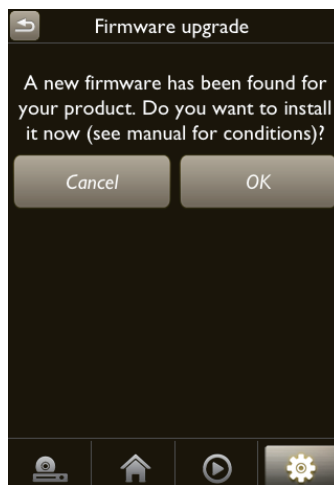
- 5 На главной странице выберите **Internet Radio** (Интернет-радио).

↳ При наличии обновления встроенной программы на экране появится запрос на обновление.

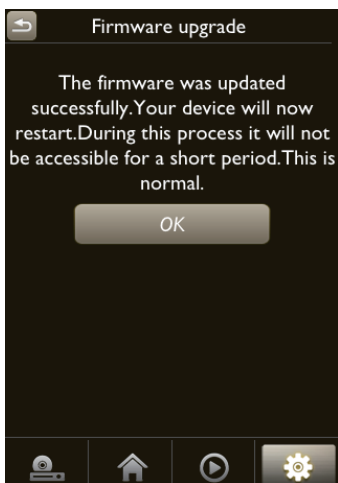


- 6 Для запуска процесса обновления нажмите **OK** в окне запроса.

↳ Индикатор питания/состояния на устройстве AW5000 будет мигать желтым светом.



- 7 Дождитесь окончания установки обновления и нажмите **OK** в окне запроса на перезагрузку устройства.



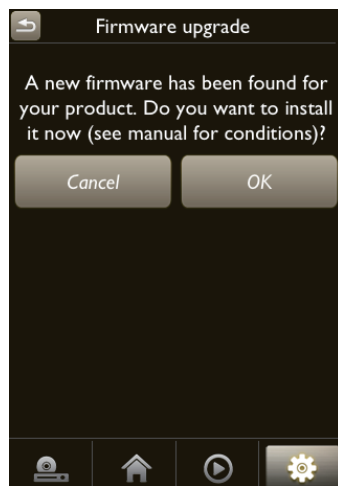
Обновление встроенной программы устройства можно также выполнять вручную.

- 1 Чтобы проверить наличие обновлений встроенной программы, на главной станции выберите **⚙** -> **Firmware upgrade** (Обновление встроенной программы) -> **Check Online** (Проверить онлайн).

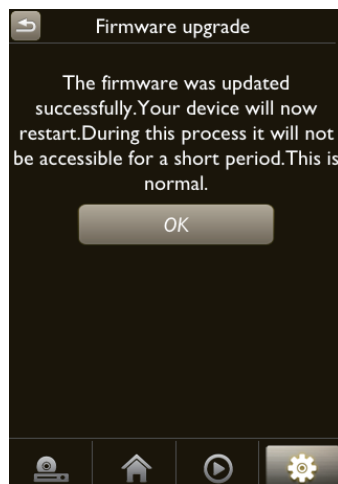


- 2 При наличии новой версии встроенной программы нажмите **OK** в окне запроса на обновление.

↳ Индикатор питания/состояния на устройстве AW5000 будет мигать желтым светом.



- 3 Дождитесь окончания установки обновления и нажмите **OK** в окне запроса на перезагрузку устройства.



# 7 Сведения об изделии

## Примечание

- Информация о продукте может быть изменена без предварительного уведомления.

## Характеристики

### Усилитель

Номинальная выходная мощность 2 x 50 Вт (среднеквадр.) @ КНИ 10%

Частотный отклик 80 Гц — 18 кГц, ±3 дБ

Отношение сигнал/шум > 86 дБ

MP3 Link 1000 мВ (среднеквадр.), 20 кОм

### Акустические системы

Сопrotивление АС 8 Ом

Акустический преобразователь 2 x купольный ВЧ-динамик, 2 x НЧ-динамик 4,5"

Чувствительность 82 дБ/м/Вт

### Беспроводные

Стандарт беспроводных сетей 802.11b/g

Безопасность беспроводной сети WEP, 10- или 26-значные цифровые ключи WPA (TKIP) или WPA2 (TKIP/AES) с ключом формата ASCII длиной 8—40 печатных символов

Диапазон частот 2412—2462 МГц (K1 — K11) (для /79, /37, /55, /97)  
2412—2472 МГц (K1 — K13) (для /12, /10, /05)

PBC (нажатие одной кнопки) Да

### Общая информация

Сеть переменного тока 100—240 В; 50/60 Гц

Энергопотребление во время работы 25 Вт

Потребление электроэнергии в режиме ожидания < 0,5 Вт

Размеры  
- Основное устройство (Ш x Г x В) 140 x 145 x 45 мм

Вес  
- С упаковкой 6,72 кг  
- Основное устройство 5,46 кг

# 8 Устранение неисправностей



## Предупреждение

- Запрещается снимать корпус устройства.

Для сохранения действия условий гарантии запрещается самостоятельно ремонтировать систему.

При возникновении неполадок в процессе использования данной системы перед обращением в сервисную службу проверьте следующие пункты. Если не удастся решить проблему, посетите веб-сайт Philips ([www.philips.com/welcome](http://www.philips.com/welcome)). При обращении в компанию Philips устройство должно находиться поблизости, номер модели и серийный номер должны быть известны.

### Отсутствует питание

- Проверьте правильность подключения сетевой вилки устройства.
- Проверьте наличие электропитания в сетевой розетке.
- Возможно, устройство находится в режиме ожидания Eco.

### Нет звука

- Возможно, звук на устройстве выключен. Если звук на устройстве отключен, индикатор питания/состояния мигает белым светом. Измените громкость в приложении Philips AirStudio или непосредственно на AW5000.
- Если используется проводное подключение, проверьте правильность и плотность подключения кабеля Ethernet.
- Проверьте подключение к сети Wi-Fi. При необходимости снова настройте сеть (см. 'Подключение AW5000 к домашней сети Wi-Fi' на стр. 9).

- Если в качестве аудиоисточника используется внешний аудиоплеер, отрегулируйте громкость непосредственно на этом плеере.

### Устройство не реагирует на нажатие кнопки

- Отключите и вновь включите систему AW5000, а затем повторно настройте сеть Wi-Fi для системы AW5000.
- Отключите вилку питания от сети и подключите повторно, а затем снова включите устройство.

### Сбой подключения к сети Wi-Fi

- Данное устройство не поддерживает метод WPS-PIN.
- Включите в маршрутизаторе Wi-Fi передачу SSID.
- Не размещайте устройство рядом с возможными источниками помех, которые могут снижать качество сигнала Wi-Fi, например с микроволновыми печами.
- Убедитесь, что имя SSID маршрутизатора состоит только из буквенно-цифровых символов и не содержит пробелы или специальные символы, такие как %/#/\*'. В пароле доступа к сети не должны содержаться символы #/:;'!.
- Если вы вручную изменяете имя AW5000 в приложении **Philips AirStudio**, не используйте специальные знаки и символы.
- Для некоторых маршрутизаторов Wi-Fi новых типов, если для подключения используется режим WPS, имя сети (SSID) может быть создано автоматически. Всегда заменяйте имя сети (SSID) по умолчанию на простое имя, состоящее из буквенно-цифровых символов, а также изменяйте режим безопасности Wi-Fi, чтобы защитить сеть.

### Сбой проводного подключения к сети

- Если перед настройкой проводного подключения использовалось беспроводное подключение, необходимо перезагрузить беспроводную акустическую систему Hi-Fi. Чтобы выполнить перезагрузку устройства, следуйте указаниям ниже.

- 1 Отключите кабель питания.
- 2 Удерживая кнопку с цифрой 1, подключите кабель питания.
  - ↳ Индикатор питания/состояния сначала начнет мигать оранжевым светом, затем загорится постоянным оранжевым светом, а затем снова начнет мигать.
- 3 Отпустите кнопку с цифрой 1.



#### Примечание

- Не отпускайте кнопку с цифрой 1, пока индикатор питания/состояния снова не начнет мигать оранжевым светом.

### Периодическое прерывание потокового воспроизведения музыки

Выполните одно или все перечисленные ниже действия.

- Переместите AW5000 ближе к маршрутизатору Wi-Fi.
- Устраните препятствия между AW5000 и маршрутизатором Wi-Fi.
- Постарайтесь не использовать канал Wi-Fi, который перекрывается другими сетями Wi-Fi поблизости от устройства.
- Проверьте, достаточную ли скорость передачи данных обеспечивает сеть (если к одному и тому же маршрутизатору подключено несколько устройств, качество беспроводной связи может снизиться). Отключите остальные устройства, подключенные к маршрутизатору.
- Если на маршрутизаторе Wi-Fi доступен параметр Quality of Service (QoS)

(Качество обслуживания (QoS)), включите его.

- Выключите остальные маршрутизаторы Wi-Fi.

### Сбой потоковой передачи музыки с ПК/ Mac

- Временно отключите брандмауэр и ПО безопасности, чтобы проверить, не блокируют ли они порты, используемые программой передачи медиаданных (Media Manager) для потоковой передачи. Сведения по снятию блокировки портов, используемых программой беспроводной передачи медиаданных, см. в документации к брандмауэру и ПО безопасности.
- Если для потоковой передачи музыки используется iPod Touch/iPhone/iPad/ ПК/Mac, и воспроизведение музыки прерывается или останавливается, попробуйте перезапустить iPod Touch/iPhone/iPad, программу передачи медиаданных или AW5000.
- В результате передачи видео или загрузки с FTP маршрутизатор может быть перегружен, что может привести к прерываниям передаваемого потока. Попробуйте уменьшить нагрузку на маршрутизатор.

### Индикатор питания/состояния горит красным светом. Что делать?

- Необходимо провести восстановление устройства с использованием кабеля Ethernet.

- 1 Убедитесь, что маршрутизатор подключен к Интернету.
- 2 Подключите устройство к маршрутизатору при помощи кабеля Ethernet.
- 3 Дождитесь окончания автоматического восстановления устройства (может занять до 10 минут).

# 9 Приложение

## 1. Настенный монтаж устройства



### Внимание

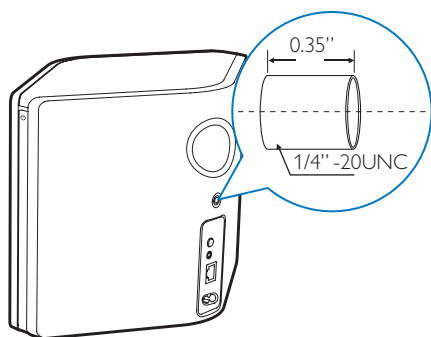
- Риск повреждения устройства! Перед выполнением настенного монтажа устройства обязательно проконсультируйтесь со специалистом.



### Предупреждение

- Опасность получения травмы! Соблюдайте осторожность во время сверления отверстий: не повредите трубы, проводящие газ и воду, или электрические кабели.

На задней панели устройства AW5000 есть отверстие для крепления с резьбой 1/4" – 20 (глубина: 0,35").



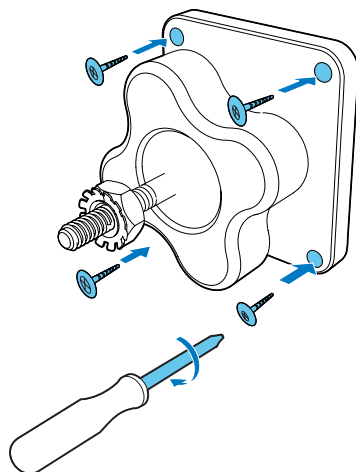
Это отверстие предназначено для крепления устройства с помощью соответствующего настенного кронштейна. Настенный кронштейн не входит в комплект устройства и приобретается отдельно. Следуйте инструкциям к приобретенному настенному кронштейну.



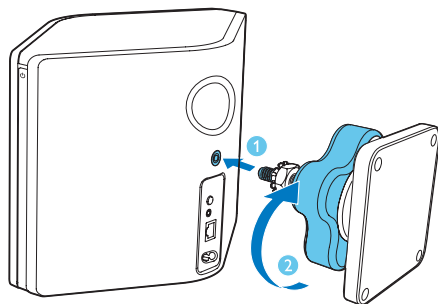
### Примечание

- Настенный кронштейн, описанный ниже, изображен в качестве примера.
- Убедитесь, что винт из комплекта настенного кронштейна по размеру подходит для отверстия на задней панели устройства AW5000 (6,75 мм).
- Настенный кронштейн должен выдерживать вес не менее 11,3 кг.

- 1 Выберите подходящее место на стене и с помощью карандаша отметьте выбранное местоположение, используя настенный кронштейн.
- 2 Перед сверлением отверстий ознакомьтесь с инструкциями к настенному кронштейну.



- 3 Вставьте винт на кронштейне в отверстие на задней панели AW5000 и поверните ручку, чтобы затянуть винт.



# 10 Приложение

## 2. Значения светодиодных индикаторов

Горит красным      Акустическая система работает со сбоями. Необходимо выполнить восстановление акустической системы (см. 'Устранение неисправностей' на стр. 28).

Цвет индикатора	Значение
Мигает оранжевым светом	Акустическая система загружается, или выполняется обновление встроенной программы.
Горит оранжевым светом	Акустическая система не подключена к сети.
Мигает попеременно белым и оранжевым светом	Акустическая система находится в режиме настройки беспроводного подключения (через приложение AirStudio). Следуйте инструкциям по настройке в приложении.
Попеременно мигает зеленым и оранжевым светом	Настройка беспроводного подключения с помощью WPS запущена или выполняется в данный момент.
Горит белым светом	Акустическая система подключена к сети Wi-Fi, можно использовать беспроводную потоковую передачу музыки.
Мигает белым светом	На акустической системе выключен звук.
Горит зеленым светом	Акустическая система находится в обычном режиме ожидания.

# Terms and conditions

## **Terms and Conditions of Use of your Philips Network-enabled Device**

Congratulations on your purchase of a Philips **Network-enabled Device** ("Device"). These Terms and Conditions of Use give you the rights to use certain features on your Device relating to the streaming of content. You must agree to these Terms and Conditions of Use before using the Device. Your use of the Device constitutes your agreement to be bound by these Terms and Conditions of Use and will give you the right to access these features. If you do not agree to these Terms and Conditions of Use, you may return your Device to the point of purchase. These Terms and Conditions of Use supplement, and do not replace, any terms, conditions or disclaimers which were provided with your purchase of the Device. All such terms, conditions and disclaimers remain in full force and effect.

## **Eligibility for Registration.**

You must be at least 14 years of age to assume the responsibilities of these Terms and Conditions of Use. If you are under 14 years of age, you may not use the Device unless one of your parents or legal guardians assumes the responsibilities of these Terms and Conditions of Use. Your use of the Device constitutes your representation that you are either 14 years of age or, if you are under 14 years of age, that your parent or legal guardian has assumed the responsibilities of these Terms and Conditions of Use.

## **Restrictions on Modification of your Device**

Your Device provides access to certain streams of content. As a condition of obtaining access to those streams through the Device, you agree not to tamper with or otherwise modify or attempt to modify the Device in any way (including through the use of software or by making physical alterations to the Device). You agree that you will not circumvent or attempt to circumvent technological measures employed to control access to, or the rights in, any content. You agree that you will not circumvent or attempt to circumvent any copy management system by any means. You agree that you will not decipher or attempt to decipher cryptographic keys or otherwise defeat or attempt to defeat any security features implemented in the Device or in the content streams. You agree that you will not use the Device for any unauthorized purpose or in contravention of any law or regulation.

## **Disclaimers Regarding Content**

The streams of content which are accessible through your Device are not controlled or programmed by Philips. Rather, they are provided by third parties. Think of your Device (in addition to its other features) as a form of "tuner" which allows you to receive the content broadcast by many others outside of your local area. Since the content is provided by others, PHILIPS HAS NO EDITORIAL CONTROL OVER ANY OF THAT CONTENT RECEIVED THROUGH YOUR DEVICE AND, THEREFORE IS NOT LIABLE FOR CONTENT OR ITS NATURE OR DELIVERY. PHILIPS DOES NOT ENDORSE ANY OPINIONS EXPRESSED IN ANY CONTENT RECEIVED THROUGH YOUR DEVICE. PHILIPS DOES NOT GUARANTEE THE TRUTHFULNESS, ACCURACY, RELIABILITY, COMPLETENESS OR TIMELINESS OF CONTENT. YOU AGREE THAT ANY RELIANCE ON CONTENT IS AT YOUR OWN RISK.

## **Limitations on Access to Streams.**

Philips does not guarantee access to any particular stream or to the content contained in any stream. Philips may, in its discretion, add or remove access to any specific stream or content at any time. Some streams are accessible through arrangements with online service providers which determine which streams are listed on their directories. Although Philips will strive to provide a good selection of online service providers, Philips does not guarantee continued access to any specific online service provider. Philips may, in its discretion, add or remove access to any specific online service provider.

## **Rights in Content**

Content may be protected by copyright laws or other intellectual property or proprietary laws. In some situations, such as use of the Device in a commercial environment, it may be necessary for you to obtain, at your own risk, a license or other authorization to use such content. You agree that, in the event such a license or

authorization is necessary, it is your responsibility to obtain any such license or authorization. You agree that you are solely liable for any damages you may incur resulting from your failure to obtain the proper license or authorization for use of the content accessible through the Device. You agree that Philips will have no liability to you with regard to your use of the content.

### **Changes in Features**

Philips may, in its discretion, change the features of the Device, including adding features to, or removing features from, the Device. Some new features may require changes to these Terms and Conditions of Use. Your use of those new features will constitute your agreement to the revised Terms and Conditions of Use.

### **Software and Intellectual Property Rights**

You may need to use certain software programs to use or have full access to certain features of the Device. You received certain software with the purchase of the Device and may receive other software from time to time in the future. Most of that software is contained in the Device and is not accessible to you. Some of that software is owned by Philips and some is owned by others. Your use of software owned by Philips is subject to these Terms and Conditions of Use and any applicable license agreement. Your use of software owned by others is governed by their applicable license agreements. Your use of software does not transfer any title or ownership rights in the software to you. Philips retains all its rights in software and other intellectual property, including copyrights, patent rights, and rights in its trademarks and trade names. You agree that you will not disassemble, decompile, create derivative works of, reverse engineer, modify, sublicense, distribute the software or use the software for any unauthorized purpose or in contravention of any law or regulation.

### **Warranty Disclaimer**

PHILIPS MAKES NO REPRESENTATION OR WARRANTY, EXPRESS OR IMPLIED, THAT THE DEVICE WILL MEET YOUR REQUIREMENTS OR THAT THE USE OF THE DEVICE WILL BE UNINTERRUPTED, TIMELY, SECURE OR FREE FROM ERRORS. PHILIPS MAKES NO WARRANTY AS TO THE CONTENT CARRIED IN ANY STREAM. PHILIPS MAKES NO REPRESENTATION OR WARRANTY, EXPRESS OR IMPLIED, AS TO THE INFORMATION OR CONTENT ACCESSED THROUGH YOUR DEVICE OR TO YOUR RELIANCE ON, OR USE OF, ANY INFORMATION OR CONTENT ACCESSED THROUGH YOUR DEVICE. SPECIFIC WARRANTIES WERE PROVIDED WITH YOUR PURCHASE OF YOUR DEVICE AND THOSE WARRANTIES, INCLUDING ANY DISCLAIMERS TO THOSE WARRANTIES, CONTINUE TO APPLY. Because some jurisdictions do not permit the disclaimer of implied warranties, such disclaimers may not apply to you.

### **Limitation of Liability**

PHILIPS WILL NOT BE LIABLE TO YOU OR TO ANY OTHER PARTY FOR ANY INDIRECT, INCIDENTAL, PUNITIVE, SPECIAL OR CONSEQUENTIAL DAMAGES (INCLUDING LOST PROFITS OR LOST SAVINGS) OR FOR LOSS OF DATA OR BUSINESS INTERRUPTION ARISING OUT OF OR RELATING TO YOUR USE OF THE DEVICE WHETHER OR NOT SUCH DAMAGES ARE BASED ON TORT, WARRANTY, CONTRACT OR ANY OTHER LEGAL THEORY - EVEN IF PHILIPS HAS BEEN ADVISED, OR IS AWARE, OF THE POSSIBILITY OF SUCH DAMAGES. IN NO EVENT WILL PHILIPS CUMULATIVE LIABILITY FOR DAMAGE (FROM ANY CAUSE WHATSOEVER) EXCEED THE AMOUNT YOU PAID FOR YOUR DEVICE.

### **Miscellaneous**

"This agreement will be governed by the laws of the jurisdiction in which the Device was sold and you hereby consent to the non-exclusive jurisdiction of courts in the relevant country. If any provision of this agreement is invalid or unenforceable under applicable law, such provision will be deemed modified to the extent necessary to render such provision valid and enforceable and the other provisions of this agreement will remain in full force and effect. These Terms and Conditions of Use will not be governed by the United Nations Convention of Contracts for the International Sale of Goods, the application of which is hereby expressly waived."

BY USING YOUR DEVICE, YOU REPRESENT THAT YOU HAVE READ AND UNDERSTOOD THESE TERMS AND CONDITIONS OF USE AND THAT YOU ACCEPT THEM.

# NOTICE

## SOFTWARE END USER LICENSE AGREEMENT

THIS SOFTWARE END USER LICENSE AGREEMENT ("THIS AGREEMENT") IS A LEGAL AND BINDING AGREEMENT BETWEEN YOU (EITHER AN INDIVIDUAL OR ENTITY) AND PHILIPS CONSUMER ELECTRONICS B.V.A DUTCH LIMITED LIABILITY COMPANY, WITH ITS PRINCIPAL OFFICE AT GLASLAAN 2, 5616 LW EINDHOVEN, THE NETHERLANDS AND ITS SUBSIDIARY COMPANIES (INDIVIDUALLY AND COLLECTIVELY "PHILIPS"). THIS AGREEMENT GIVES YOU THE RIGHT TO USE CERTAIN SOFTWARE (THE "SOFTWARE") INCLUDING USER DOCUMENTATION IN ELECTRONIC FORM WHICH MAY HAVE BEEN PROVIDED SEPARATELY OR TOGETHER WITH A PHILIPS PRODUCT (THE "DEVICE") OR A PC. BY DOWNLOADING, INSTALLING OR OTHERWISE USING THE SOFTWARE, YOU ACCEPT AND AGREE TO BE BOUND BY ALL OF THE TERMS AND CONDITIONS OF THIS AGREEMENT. IF YOU DO NOT AGREE TO THESE TERMS AND CONDITIONS, DO NOT DOWNLOAD, INSTALL OR OTHERWISE USE THE SOFTWARE. IF YOU ACQUIRED THE SOFTWARE IN TANGIBLE MEDIA E.G. CD WITHOUT THE OPPORTUNITY TO REVIEW THIS LICENSE AND DO NOT ACCEPT THESE TERMS, YOU MAY RECEIVE A FULL REFUND OF THE AMOUNT, IF ANY, THAT YOU PAID FOR THE SOFTWARE IF YOU RETURN THE SOFTWARE UNUSED WITH PROOF OF PAYMENT WITHIN 30 DAYS FROM THE DATE OF PURCHASE.

**1. Grant of License.** This Agreement grants you a non-exclusive, nontransferable, non-sub licensable license to install and use, on the Device or a PC, as applicable, one (1) copy of the specified version of the Software in object code format as set out in the user documentation solely for your personal use. The Software is "in use" when it is loaded into the temporary or permanent memory (i.e. RAM, hard disk, etc.) of the PC or the Device.

**2. Ownership.** The Software is licensed and not sold to you. This Agreement grants you only the right to use the Software, but you do not acquire any rights, express or implied, in the Software other than those specified in this Agreement. Philips and its licensors retain all right, title, and interest in and to the Software, including all patents, copyrights, trade secrets, and other intellectual property rights incorporated therein. The Software is protected by copyright laws, international treaty provisions, and other intellectual property laws. Therefore, other than as expressly set forth herein, you may not copy the Software without prior written authorization of Philips, except that you may make one (1) copy of the Software for your back-up purposes only. You may not copy any printed materials accompanying the Software, nor print more than one (1) copy of any user documentation provided in electronic form, except that you may make one (1) copy of such printed materials for your back-up purposes only.

**3. License Restrictions.** Except as provided otherwise herein, you shall not rent, lease, sublicense, sell, assign, loan, or otherwise transfer the Software. You shall not, and you shall not permit any third party, to reverse engineer, decompile, or disassemble the Software, except to the extent that applicable law expressly prohibits the foregoing restriction. You may not remove or destroy any product identification, copyright notices, or other proprietary markings or restrictions from the Software. All titles, trademarks, and copyright and restricted rights notices shall be reproduced on your back up copy of the Software. You may not modify or adapt the Software, merge the Software into another program or create derivative works based upon the Software.

**4. Termination of certain functionality.** The Software may contain components of certain licensed software including software licensed from Microsoft Corporation ("Microsoft") which implements Microsoft's digital rights management technology for Windows Media. Content providers are using the digital rights management technology for Windows Media ("WM-DRM") to protect the integrity of their content ("Secure Content") so that their intellectual property, including copyright, in such content is not misappropriated. Your Device may also use WM-DRM software to transfer or play Secure Content ("WM-DRM Software"). If the security of such WM-DRM Software is compromised, Microsoft may revoke (either on its own or upon the request of the owners of Secure Content ("Secure Content Owners")) the WM-DRM Software's right to acquire new licenses to copy, store, transfer, display and/or play Secure Content. Revocation does not alter the WM-DRM Software's

ability to play unprotected content. A list of revoked WM-DRM Software is sent to your PC and/or your Device whenever you download a license for Secure Content. Microsoft may, in conjunction with such license, also download revocation lists onto your Device on behalf of Secure Content Owners, which may disable your Device's ability to copy, store, display, transfer, and/or play Secure Content. Secure Content Owners may also require you to upgrade some of the WM-DRM components distributed with this Software ("WM-DRM Upgrades") before accessing their content. When you attempt to play Secure Content, WM-DRM Software built by Microsoft will notify you that a WM-DRM Upgrade is required and then ask for your consent before the WM-DRM Upgrade is downloaded. WM-DRM Software built by Philips may do the same. If you decline the upgrade, you will not be able to access Secure Content that requires the WM-DRM Upgrade; however, you will still be able to access unprotected content and Secure Content that does not require the upgrade. WM-DRM features that access the Internet, such as acquiring new licenses and/or performing a required WM-DRM Upgrade, can be switched off. When these features are switched off, you will still be able to play Secure Content if you have a valid license for such content already stored on your Device. However, you will not be able to use certain of the WM-DRM Software features that require Internet access such as the ability to download content that requires the WM-DRM Upgrade. All title and intellectual property rights in and to the Secure Content is the property of the respective Secure Content owners and may be protected by applicable copyright or other intellectual property laws and treaties. This Agreement grants you no rights to use such Secure Content. **To summarize, if the Software contains Microsoft WM-DRM components – Secure Content you desire to download, copy, store, display, transfer, and/or play is protected by the Microsoft WM-DRM components of the Software. Microsoft, Secure Content Owners, or Secure Content distributors may deny you access, or restrict your access, to Secure Content even after you have paid for, and/or obtained, it. Neither your consent nor the consent or approval of Philips is necessary for any of them to deny, withhold or otherwise restrict your access to Secure Content. Philips does not guaranty that you will be able to download, copy, store, display, transfer, and/or play Secure Content.**

**5. Open Source Software.** (a) This software may contain components that are subject to open-source terms, as stated in the documentation accompanying the Device. This Agreement does not apply to this software as such. (b) Your license rights under this Agreement do not include any right or license to use, distribute or create derivative works of the Software in any manner that would subject the Software to Open Source Terms. "Open Source Terms" means the terms of any license that directly or indirectly (1) create, or purport to create, obligations for Philips with respect to the Software and/or derivative works thereof; or (2) grant, or purport to grant, to any third party any rights or immunities under intellectual property or proprietary rights in the Software or derivative works thereof.

**6. Termination.** This Agreement shall be effective upon installation or first use of the Software and shall terminate (i) at the discretion of Philips, due to your failure to comply with any term of this Agreement; or (ii) upon destruction of all copies of the Software and related materials provided to you by Philips hereunder. Philips's rights and your obligations shall survive the termination of this Agreement.

**7. Upgrades.** Philips may, at its sole option, make upgrades to the Software available by general posting on a website or by any other means or methods. Such upgrades may be made available pursuant to the terms of this Agreement or the release of such upgrades to you may be subject to your acceptance of another agreement.

**8. Support Services.** Philips is not obligated to provide technical or other support ("Support Services") for the Software. If Philips does provide you with Support Services, these will be governed by separate terms to be agreed between you and Philips.

**9. Limited Software Warranty.** Philips provides the Software 'as is' and without any warranty except that the Software will perform substantially in accordance with the documentation accompanying the Software for a period of one year after your first download, installation or use of the Software, whichever occurs first. Philips' entire liability and your exclusive remedy for breach of this warranty shall be, at Philips' option, either (i) return of the price paid by you for the Software (if any); or (b) repair or replacement of the Software that does not

meet the warranty set forth herein and that is returned to Philips with a copy of your receipt. This limited warranty shall be void if failure of the Software has resulted from any accident, abuse, misuse or wrongful application. Any replacement Software will be warranted for the remainder of the original warranty period or thirty (30) days, whichever is longer. This limited warranty shall not apply to you if the Software was provided to you free of charge on an evaluation only basis.

**10. NO OTHER WARRANTIES.** EXCEPT AS SET FORTH ABOVE, PHILIPS AND ITS LICENSORS DO NOT WARRANT THAT THE SOFTWARE WILL OPERATE ERROR FREE OR UNINTERRUPTED, OR WILL MEET YOUR REQUIREMENTS. YOU ASSUME ALL RESPONSIBILITIES FOR SELECTION OF THE SOFTWARE TO ACHIEVE YOUR INTENDED RESULTS, AND FOR THE INSTALLATION OF, USE OF, AND RESULTS OBTAINED FROM THE SOFTWARE. TO THE MAXIMUM EXTENT PERMITTED BY APPLICABLE LAW, PHILIPS AND ITS LICENSORS DISCLAIM ALL WARRANTIES AND CONDITIONS, WHETHER EXPRESS OR IMPLIED, INCLUDING BUT NOT LIMITED TO THE IMPLIED WARRANTIES OF MERCHANTABILITY, FITNESS FOR A PARTICULAR PURPOSE, AND ACCURACY OR COMPLETENESS OF RESULTS WITH RESPECT TO THE SOFTWARE AND THE ACCOMPANYING MATERIALS. THERE IS NO WARRANTY AGAINST INFRINGEMENT. PHILIPS DOES NOT WARRANT THAT YOU WILL BE ABLE TO DOWNLOAD, COPY, STORE, DISPLAY, TRANSFER, AND/OR PLAY SECURE CONTENT.

**11. LIMITATION OF LIABILITY.** UNDER NO CIRCUMSTANCES WILL PHILIPS OR ITS LICENSORS BE LIABLE FOR ANY CONSEQUENTIAL, SPECIAL, INDIRECT, INCIDENTAL OR PUNITIVE DAMAGES WHATSOEVER, INCLUDING, WITHOUT LIMITATION, DAMAGES FOR LOSS OF PROFITS OR REVENUES, BUSINESS INTERRUPTION, LOSS OF BUSINESS INFORMATION, LOSS OF DATA, LOSS OF USE OR OTHER PECUNIARY LOSS, EVEN IF PHILIPS OR ITS LICENSORS HAVE BEEN ADVISED OF THE POSSIBILITY OF SUCH DAMAGES. IN NO EVENT SHALL PHILIPS' OR ITS LICENSORS' AGGREGATE LIABILITY FOR DAMAGES ARISING OUT OF THIS AGREEMENT EXCEED THE GREATER OF THE PRICE ACTUALLY PAID BY YOU FOR THE SOFTWARE OR FIVE TEN POUNDS STERLINGUS DOLLARS (\$10.00).

**12. Trademarks.** Certain of the product and Philips names used in this Agreement, the Software, and the printed user documentation may constitute trademarks of the Philips, its licensors or other third parties. You are not authorized to use any such trademarks.

**13. Export Administration.** You agree that you will not directly or indirectly, export or re-export the Software to any country for which the United States Export Administration Act, or any similar United States law or regulation requires an export license or other U.S. Government approval, unless the appropriate export license or approval has first been obtained. By downloading or installing the Software you agree to abide by this Export provision.

**14. Governing law.** This Agreement is governed by the laws of your country of residence, without reference to its conflict of laws principles. Any dispute between you and Philips regarding this Agreement shall be subject to the non-exclusive jurisdiction of the courts of your country of residence.

**15. General.** This Agreement contains the entire agreement between you and Philips and supersedes any prior representation, undertaking or other communication or advertising with respect to the Software and user documentation. If any part of this Agreement is held invalid, the remainder of this Agreement will continue in full force and effect. This Agreement shall not prejudice the statutory rights of any party dealing as a consumer.

This product uses the following open source software:

uClinux for Blackfin 2009R1 Release <http://blackfin.uclinux.org/>, licensed under GPL V2.

BusyBox R1.13.4 <http://www.busybox.net/>, licensed under GPL V2.

Wireless Tools for Linux v29 <http://www.wpl.hp.com/personal/jean\_Tournihes/Linux/Tools.html>, licensed under GPLV2.

-----

Das U-Boot r1.1.6 <http://www.denx.de/wiki/U-Boot>, with exclusions for user programs.

NOTE! This copyright does \*not\* cover the so-called "standalone" applications that use U-Boot services by means of the jump table provided by U-Boot exactly for this purpose - this is merely considered normal use of U-Boot, and does \*not\* fall under the heading of "derived work".

The header files "include/image.h" and "include/asm-\*/u-boot.h" define interfaces to U-Boot. Including these (unmodified) header files in another file is considered normal use of U-Boot, and does \*not\* fall under the heading of "derived work".

Also note that the GPL below is copyrighted by the Free Software Foundation, but the instance of code that it refers to (the U-Boot source code) is copyrighted by me and others who actually wrote it. -- Wolfgang Denk

-----

Linux kernel release 2.6.xx <http://kernel.org/>, licensed under GPL V2 with exclusions for user programs.

NOTE! This copyright does \*not\* cover user programs that use kernel services by normal system calls - this is merely considered normal use of the kernel, and does \*not\* fall under the heading of "derived work". Also note that the GPL below is copyrighted by the Free Software Foundation, but the instance of code that it refers to (the Linux kernel) is copyrighted by me and others who actually wrote it.

Also note that the only valid version of the GPL as far as the kernel is concerned is \_this\_ particular version of the license (ie v2, not v2.2 or v3.x or whatever), unless explicitly otherwise stated.

Linus Torvalds

-----

GPLV2 GNU GENERAL PUBLIC LICENSE

Version 2, June 1991

Copyright (C) 1989, 1991 Free Software Foundation, Inc.  
51 Franklin St, Fifth Floor, Boston, MA  
02110-1301 USA

Everyone is permitted to copy and distribute verbatim copies of this license document, but changing it is not allowed.

Preamble

The licenses for most software are designed to take away your freedom to share and change it. By contrast, the GNU General Public License is intended to guarantee your freedom to share and change free software--to make sure the software is free for all its users. This General Public License applies to most of the Free Software Foundation's software and to any other program whose authors commit to using it. (Some other Free Software Foundation software is covered by the GNU Library General Public License instead.) You can apply it to your programs, too.

When we speak of free software, we are referring to freedom, not price. Our General Public Licenses are designed to make sure that you have the freedom to distribute copies of free software (and charge for this service if you wish), that you receive source code or can get it if you want it, that you can change the software or use pieces of it in new free programs; and that you know you can do these things.

To protect your rights, we need to make restrictions that forbid anyone to deny you these rights or to ask you to surrender the rights. These restrictions translate to certain responsibilities for you if you distribute copies of the software, or if you modify it.

For example, if you distribute copies of such a program, whether gratis or for a fee, you must give the recipients all the rights that you have. You must make sure that they, too, receive or can get the

source code. And you must show them these terms so they know their rights.

We protect your rights with two steps: (1) copyright the software, and (2) offer you this license which gives you legal permission to copy, distribute and/or modify the software.

Also, for each author's protection and ours, we want to make certain that everyone understands that there is no warranty for this free software. If the software is modified by someone else and passed on, we want its recipients to know that what they have is not the original, so that any problems introduced by others will not reflect on the original authors' reputations.

Finally, any free program is threatened constantly by software patents. We wish to avoid the danger that redistributors of a free program will individually obtain patent licenses, in effect making the program proprietary. To prevent this, we have made it clear that any patent must be licensed for everyone's free use or not licensed at all.

The precise terms and conditions for copying, distribution and modification follow.

GNU GENERAL PUBLIC LICENSE  
TERMS AND CONDITIONS FOR COPYING, DISTRIBUTION  
AND MODIFICATION

0. This License applies to any program or other work which contains a notice placed by the copyright holder saying it may be distributed under the terms of this General Public License. The "Program", below, refers to any such program or work, and a "work based on the Program" means either the Program or any derivative work under copyright law; that is to say, a work containing the Program or a portion of it, either verbatim or with modifications and/or translated into another language. (Hereinafter, translation is included without limitation in the term "modification".) Each licensee is addressed as "you".

Activities other than copying, distribution and modification are not covered by this License; they are outside its scope. The act of running the Program is not restricted, and the output from the Program is covered only if its contents constitute a work based on the Program (independent of having been made by running the Program). Whether that is true depends on what the Program does.

1. You may copy and distribute verbatim copies of the Program's source code as you receive it, in any medium, provided that you conspicuously and appropriately publish on each copy an appropriate copyright notice and disclaimer of warranty; keep intact all the notices that refer to this License and to the absence of any warranty; and give any other recipients of the Program a copy of this License along with the Program.

You may charge a fee for the physical act of transferring a copy, and you may at your option offer warranty protection in exchange for a fee.

2. You may modify your copy or copies of the Program or any portion of it, thus forming a work based on the Program, and copy and distribute such modifications or works under the terms of Section 1 above, provided that you also meet all of these conditions:

a) You must cause the modified files to carry prominent notices stating that you changed the files and the date of any change.

b) You must cause any work that you distribute or publish, that in whole or in part contains or is derived from the Program or any part thereof, to be licensed as a whole at no charge to all third parties under the terms of this License.

c) If the modified program normally reads commands interactively when run, you must cause it, when started running for such interactive use in the most ordinary way, to print or display an announcement including an appropriate copyright notice and a notice that there is no warranty (or else, saying that you provide a warranty) and that users may redistribute the program under these conditions, and telling the user how to view a copy of this License. (Exception: if the Program itself is interactive but does not normally print such an announcement, your work based on the Program is not required to print an announcement.)

These requirements apply to the modified work as a whole. If identifiable sections of that work are not derived from the Program, and can be reasonably considered independent and separate works in themselves, then this License, and its terms, do not apply to those sections when you distribute them as separate works. But when you distribute the same sections as part of a whole which is a work based on the Program, the distribution of the whole must be on the terms of this License, whose permissions for other licensees extend to the entire whole, and thus to each and every part regardless of who wrote it.

Thus, it is not the intent of this section to claim rights or contest your rights to work written entirely by you; rather, the intent is to exercise the right to control the distribution of derivative or collective works based on the Program.

In addition, mere aggregation of another work not based on the Program with the Program (or with a work based on the Program) on a volume of a storage or distribution medium does not bring the other work under the scope of this License.

3. You may copy and distribute the Program (or a work based on it, under Section 2) in object code or executable form under the terms of Sections 1 and 2 above provided that you also do one of the following:

a) Accompany it with the complete corresponding machine-readable source code, which must be distributed under the terms of Sections 1 and 2 above on a medium customarily used for software interchange; or,

b) Accompany it with a written offer, valid for at least three years, to give any third party, for a charge no more than your cost of physically performing source distribution, a complete machine-readable copy of the corresponding source code, to be distributed under the terms of Sections 1 and 2 above on a medium customarily used for software interchange; or,

c) Accompany it with the information you received as to the offer to distribute corresponding source code. (This alternative is allowed only for noncommercial distribution and only if you received the program in object code or executable form with such an offer; in accord with Subsection b above.)

The source code for a work means the preferred form of the work for making modifications to it. For an executable work, complete source code means all the source code for all modules it contains, plus any associated interface definition files, plus the scripts used to control compilation and installation of the executable. However, as a special exception, the source code distributed need not include anything that is normally distributed (in either source or binary form) with the major components (compiler, kernel, and so on) of the operating system on which the executable runs, unless that component itself accompanies the executable.

If distribution of executable or object code is made by offering access to copy from a designated place, then offering equivalent access to copy the source code from the same place counts as distribution of the source code, even though third parties are not compelled to copy the source along with the object code.

4. You may not copy, modify, sublicense, or distribute the Program except as expressly provided under this License. Any attempt otherwise to copy, modify, sublicense or distribute the Program is void, and will automatically terminate your rights under this License. However, parties who have received copies, or rights, from you under this License will not have their licenses terminated so long as such parties remain in full compliance.

5. You are not required to accept this License, since you have not signed it. However, nothing else grants you permission to modify or distribute the Program or its derivative works. These actions are prohibited by law if you do not accept this License. Therefore, by modifying or distributing the Program (or any work based on the Program), you indicate your acceptance of this License to do so, and all its terms and conditions for copying, distributing or modifying the Program or works based on it.

6. Each time you redistribute the Program (or any work based on the Program), the recipient automatically receives a license from the original licensor to copy, distribute or modify the Program subject to these terms and conditions. You may not impose any further restrictions on the recipients' exercise of the rights granted herein. You are not responsible for enforcing compliance by third parties to this License.

7. If, as a consequence of a court judgment or allegation of patent infringement or for any other reason (not limited to patent issues), conditions are imposed on you (whether by court order, agreement or otherwise) that contradict the conditions of this License, they do not excuse you from the conditions of this License. If you cannot distribute so as to satisfy simultaneously your obligations under this License and any other pertinent obligations, then as a consequence you may not distribute the Program at all. For example, if a patent licensee would not permit royalty-free redistribution of the Program by all those who receive copies directly or indirectly through you, then the only way you could satisfy both it and this License would be to refrain entirely from distribution of the Program.

8. If the distribution and/or use of the Program is restricted in certain countries either by patents or by copyrighted interfaces, the original copyright holder who places the Program under this License may add an explicit geographical distribution limitation excluding those countries, so that distribution is permitted only in or among countries not thus excluded. In such case, this License incorporates the limitation as if written in the body of this License.

9. The Free Software Foundation may publish revised and/or new versions of the General Public License from time to time. Such new versions will be similar in spirit to the present version, but may differ in detail to address new problems or concerns.

Each version is given a distinguishing version number. If the Program specifies a version number of this License which applies to it and "any later version", you have the option of following the terms and conditions either of that version or of any later version published by the Free Software Foundation.

This program is free software; you can redistribute it and/or modify it under the terms of the GNU General Public License as published by the Free Software Foundation; either version 2 of the License, or (at your option) any later version.

It is not the purpose of this section to induce you to infringe any patents or other property right claims or to contest validity of any such claims; this section has the sole purpose of protecting the integrity of the free software distribution system, which is implemented by the GNU General Public License. Many people have made generous contributions to the wide range of software distributed through that system in reliance on consistent application of that system; it is up to the author/donor to decide if he or she is willing to distribute software through any other system and a licensee cannot impose that choice.

You should have received a copy of the GNU General Public License along with this program; if not, write to the Free Software Foundation, Inc., 51 Franklin St, Fifth Floor, Boston, MA 02110-1301 USA

This section is intended to make thoroughly clear what is believed to be a consequence of the rest of this License.

8. If the distribution and/or use of the Program is restricted in certain countries either by patents or by copyrighted interfaces, the original copyright holder who places the Program under this License may add an explicit geographical distribution limitation excluding those countries, so that distribution is permitted only in or among countries not thus excluded. In such case, this License incorporates the limitation as if written in the body of this License.

9. The Free Software Foundation may publish revised and/or new versions of the General Public License from time to time. Such new versions will be similar in spirit to the present version, but may differ in detail to address new problems or concerns.

Each version is given a distinguishing version number. If the Program specifies a version number of this License which applies to it and "any later version", you have the option of following the terms and conditions either of that version or of any later version published by the Free Software Foundation. If the Program does not specify a version number of this License, you may choose any version ever published by the Free Software Foundation.

The source code for a work means the preferred form of the work for making modifications to it. For an executable work, complete source code means all the source code for all modules it contains, plus any associated interface definition files, plus the scripts used to control compilation and installation of the executable. However, as a special exception, the source code distributed need not include anything that is normally distributed (in either source or binary form) with the major components (compiler, kernel, and so on) of the operating system on which the executable runs, unless that component itself accompanies the executable.

If distribution of executable or object code is made by offering access to copy from a designated place, then offering equivalent access to copy the source code from the same place counts as distribution of the source code, even though third parties are not compelled to copy the source along with the object code.

4. You may not copy, modify, sublicense, or distribute the Program except as expressly provided under this License. Any attempt otherwise to copy, modify, sublicense or distribute the Program is void, and will automatically terminate your rights under this License. However, parties who have received copies, or rights, from you under this License will not have their licenses terminated so long as such parties remain in full compliance.

11. BECAUSE THE PROGRAM IS LICENSED FREE OF CHARGE, THERE IS NO WARRANTY FOR THE PROGRAM, TO THE EXTENT PERMITTED BY APPLICABLE LAW. EXCEPT WHEN OTHERWISE STATED IN WRITING THE COPYRIGHT HOLDERS AND/OR OTHER PARTIES PROVIDE THE PROGRAM "AS IS" WITHOUT WARRANTY OF ANY KIND, EITHER EXPRESSED OR IMPLIED, INCLUDING, BUT NOT LIMITED TO, THE IMPLIED WARRANTIES OF MERCHANTABILITY AND FITNESS FOR A PARTICULAR PURPOSE. THE ENTIRE RISK AS TO THE QUALITY AND PERFORMANCE OF THE PROGRAM IS WITH YOU. SHOULD THE PROGRAM PROVE DEFECTIVE, YOU ASSUME THE COST OF ALL NECESSARY SERVICING, REPAIR OR CORRECTION.

12. IN NO EVENT UNLESS REQUIRED BY APPLICABLE LAW OR AGREED TO IN WRITING WILL ANY COPYRIGHT HOLDER, OR ANY OTHER PARTY WHO MAY MODIFY AND/OR REDISTRIBUTE THE PROGRAM AS PERMITTED ABOVE, BE LIABLE TO YOU FOR DAMAGES, INCLUDING ANY GENERAL, SPECIAL, INCIDENTAL OR CONSEQUENTIAL DAMAGES ARISING OUT OF THE USE OR INABILITY TO USE THE PROGRAM (INCLUDING BUT NOT LIMITED TO LOSS OF DATA OR DATA BEING RENDERED INACCURATE OR LOSSES SUSTAINED BY YOU OR THIRD PARTIES OR A FAILURE OF THE PROGRAM TO OPERATE WITH ANY OTHER PROGRAMS), EVEN IF SUCH HOLDER OR OTHER PARTY HAS BEEN ADVISED OF THE POSSIBILITY OF SUCH DAMAGES.

END OF TERMS AND CONDITIONS

How to Apply These Terms to Your New Programs

If you develop a new program, and you want it to be of the greatest possible use to the public, the best way to achieve this is to make it free software which everyone can redistribute and change under these terms.

To do so, attach the following notices to the program. It is safest to attach them to the start of each source file to most effectively convey the exclusion of warranty; and each file should have at least the "copyright" line and a pointer to where the full notice is found.

<one line to give the program's name and a brief idea of what it does.> Copyright (C) <year> <name of author>

This program is free software; you can redistribute it and/or modify it under the terms of the GNU General Public License as published by the Free Software Foundation; either version 2 of the License, or (at your option) any later version.

This program is distributed in the hope that it will be useful, but WITHOUT ANY WARRANTY; without even the implied warranty of MERCHANTABILITY or FITNESS FOR A PARTICULAR PURPOSE. See the GNU General Public License for more details.

You should have received a copy of the GNU General Public License along with this program; if not, write to the Free Software Foundation, Inc., 51 Franklin St, Fifth Floor, Boston, MA 02110-1301 USA

This section is intended to make thoroughly clear what is believed to be a consequence of the rest of this License.

Also add information on how to contact you by electronic and paper mail.

If the program is interactive, make it output a short notice like this when it starts in an interactive mode:

Gnomovision version 69, Copyright (C) year name of author Gnomovision comes with ABSOLUTELY NO WARRANTY; for details type `show w'. This is free software, and you are welcome to redistribute it under certain conditions; type `show c' for details.

The hypothetical commands 'show w' and 'show c' should show the appropriate parts of the General Public License. Of course, the commands you use may be called something other than 'show w' and 'show c'; they could even be mouse-clicks or menu items--whatever suits your program.

You should also get your employer (if you work as a programmer) or your school, if any, to sign a "copyright disclaimer" for the program, if necessary. Here is a sample; alter the names:

Yoodyne, Inc., hereby disclaims all copyright interest in the program "Gnomovision" (which makes passes at compilers) written by James Hacker.

<signature of Ty Coon>, 1 April 1989 Ty Coon, President of Vice

This General Public License does not permit incorporating your program into proprietary programs. If your program is a subroutine library, you may consider it more useful to permit linking proprietary applications with the library. If this is what you want to do, use the GNU Library General Public License instead of this License.

NO WARRANTY

uClibc r0.9 <http://www.uclibc.org/>, licensed under LGPLV2.

-----

GPLV2 GNU LIBRARY GENERAL PUBLIC LICENSE

Version 2, June 1991

Copyright (C) 1991 Free Software Foundation, Inc.  
675 Mass Ave, Cambridge, MA 02139, USA  
Everyone is permitted to copy and distribute verbatim copies of this license document, but changing it is not allowed.

[This is the first released version of the library GPL. It is numbered 2 because it goes with version 2 of the ordinary GPL.]

Preamble

The licenses for most software are designed to take away your freedom to share and change it. By contrast, the GNU General Public Licenses are intended to guarantee your freedom to share and change free software--to make sure the software is free for all its users.

This license, the Library General Public License, applies to some specially designated Free Software Foundation software, and to any other libraries whose authors decide to use it. You can use it for your libraries, too.

When we speak of free software, we are referring to freedom, not price. Our General Public Licenses are designed to make sure that you have the freedom to distribute copies of free software (and charge for this service if you wish), that you receive source code or can get it if you want it, that you can change the software or use pieces of it in new free programs; and that you know you can do these things.

To protect your rights, we need to make restrictions that forbid anyone to deny you these rights or to ask you to surrender the rights. These restrictions translate to certain responsibilities for you if you distribute copies of the library, or if you modify it.

This program is free software; you can redistribute it and/or modify it under the terms of the GNU General Public License as published by the Free Software Foundation; either version 2 of the License, or (at your option) any later version.

For example, if you distribute copies of the library, whether gratis or for a fee, you must give the recipients all the rights that we gave you. You must make sure that they, too, receive or can get the source code. If you link a program with the library, you must provide complete object files to the recipients so that they can relink them with the library; after making changes to the library and recompiling it. And you must show them these terms so they know their rights.

Our method of protecting your rights has two steps: (1) copyright the library, and (2) offer you this license which gives you legal permission to copy, distribute and/or modify the library.

Also, for each distributor's protection, we want to make certain that everyone understands that there is no warranty for this free library. If the library is modified by someone else and passed on, we want its recipients to know that what they have is not the original version, so that any problems introduced by others will not reflect on the original authors' reputations.

Finally, any free program is threatened constantly by software patents. We wish to avoid the danger that companies distributing free software will individually obtain patent licenses, thus in effect transforming the program into proprietary software. To prevent this, we have made it clear that any patent must be licensed for everyone's free use or not licensed at all.

The reason we have a separate public license for some libraries is that they blur the distinction we usually make between modifying or adding to a program and simply using it. Linking a program with a library, without changing the library, is in some sense simply using the library; and is analogous to running a utility program or application program. However, in a textual and legal sense, the linked executable is a combined work, a derivative of the original library, and the ordinary General Public License treats it as such.

Because of this blurred distinction, using the ordinary General Public License for libraries did not effectively promote software sharing, because most developers did not use the libraries. We concluded that weaker conditions might promote sharing better.

However, unrestricted linking of non-free programs would deprive the users of those programs of all benefit from the free status of the libraries themselves. This Library General Public License is intended to permit developers of non-free programs to use free libraries, while preserving your freedom as a user of such programs to change the free libraries that are incorporated in them. (We have not seen how to achieve this as regards changes in header files, but we have achieved it as regards changes in the actual functions of the library.) The hope is that this will lead to faster development of free libraries.

(For example, a function in a library to compute square roots has a purpose that is entirely well-defined independent of the application. Therefore, Subsection 2d requires that any application-supplied function or table used by this function must be optional: if the application does not supply it, the square root function must still compute square roots.)

These requirements apply to the modified work as a whole. If identifiable sections of that work are not derived from the Library, and can be reasonably considered independent and separate works in themselves, then this License, and its terms, do not apply to those sections when you distribute them as separate works. But when you distribute the same sections as part of a whole which is a work based on the Library, the distribution of the whole must be on the terms of this License, whose permissions for other licensees extend to the entire whole, and thus to each and every part regardless of who wrote it.

Thus, it is not the intent of this section to claim rights or contest your rights to work written entirely by you; rather, the intent is to exercise the right to control the distribution of derivative or collective works based on the Library.

Note that it is possible for a library to be covered by the ordinary General Public License rather than by this special one.

In addition, mere aggregation of another work not based on the Library with the Library (or with a work based on the Library) on a volume of a storage or distribution medium does not bring the other work under the scope of this License.

3. You may opt to apply the terms of the ordinary GNU General Public License instead of this License to a given copy of the Library. To do this, you must alter all the notices that refer to this License, so that they refer to the ordinary GNU General Public License, version 2, instead of to this License. (If a newer version than version 2 of the ordinary GNU General Public License has appeared, then you can specify that version instead if you wish.) Do not make any other change in these notices.

A "library" means a collection of software functions and/or data prepared so as to be conveniently linked with application programs (which use some of those functions and data) to form executables.

The "Library", below, refers to any such software library or work which has been distributed under these terms. A "work based on the Library" means either the Library or any derivative work under copyright law; that is to say, a work containing the Library or a portion of it, either verbatim or with modifications and/or translated straightforwardly into another language. (Hereinafter, translation is included without limitation in the term "modification".)

To protect your rights, we need to make restrictions that forbid anyone to deny you these rights or to ask you to surrender the rights. These restrictions translate to certain responsibilities for you if you distribute copies of the library, or if you modify it.

"Source code" for a work means the preferred form of the work for making modifications to it. For a library, complete source code means all the source code for all modules it contains, plus any associated interface definition files, plus the scripts used to control compilation and installation of the library.

Activities other than copying, distribution and modification are not covered by this License; they are outside its scope. The act of running a program using the Library is not restricted, and output from such a program is covered only if its contents constitute a work based on the Library (independent of the use of the Library in a tool for writing it). Whether that is true depends on what the Library does and what the program that uses the Library does.

1. You may copy and distribute verbatim copies of the Library's complete source code as you receive it, in any medium, provided that you conspicuously and appropriately publish on each copy an appropriate copyright notice and disclaimer of warranty; keep intact all the notices that refer to this License and to the absence of any warranty; and distribute a copy of this License along with the Library.

2. You may modify your copy or copies of the Library or any portion of it, thus forming a work based on the Library, and copy and distribute such modifications or work under the terms of Section 1 above, provided that you also meet all of these conditions:

a) The modified work must itself be a software library.

b) You must cause the files modified to carry prominent notices stating that you changed the files and the date of any change.

c) You must cause the whole of the work to be licensed at no charge to all third parties under the terms of this License.

d) If a facility in the modified Library refers to a function or a table of data to be supplied by an application program that uses the facility, other than as an argument passed when the facility is invoked, then you must make a good faith effort to ensure that, in the event an application does not supply such function or table, the facility still operates, and performs whatever part of its purpose remains meaningful.

(For example, a function in a library to compute square roots has a purpose that is entirely well-defined independent of the application. Therefore, Subsection 2d requires that any application-supplied function or table used by this function must be optional: if the application does not supply it, the square root function must still compute square roots.)

These requirements apply to the modified work as a whole. If identifiable sections of that work are not derived from the Library, and can be reasonably considered independent and separate works in themselves, then this License, and its terms, do not apply to those sections when you distribute them as separate works. But when you distribute the same sections as part of a whole which is a work based on the Library, the distribution of the whole must be on the terms of this License, whose permissions for other licensees extend to the entire whole, and thus to each and every part regardless of who wrote it.

Thus, it is not the intent of this section to claim rights or contest your rights to work written entirely by you; rather, the intent is to exercise the right to control the distribution of derivative or collective works based on the Library.

Note that it is possible for a library to be covered by the ordinary General Public License rather than by this special one.

In addition, mere aggregation of another work not based on the Library with the Library (or with a work based on the Library) on a volume of a storage or distribution medium does not bring the other work under the scope of this License.

3. You may opt to apply the terms of the ordinary GNU General Public License instead of this License to a given copy of the Library. To do this, you must alter all the notices that refer to this License, so that they refer to the ordinary GNU General Public License, version 2, instead of to this License. (If a newer version than version 2 of the ordinary GNU General Public License has appeared, then you can specify that version instead if you wish.) Do not make any other change in these notices.

A "library" means a collection of software functions and/or data prepared so as to be conveniently linked with application programs (which use some of those functions and data) to form executables.

The "Library", below, refers to any such software library or work which has been distributed under these terms. A "work based on the Library" means either the Library or any derivative work under copyright law; that is to say, a work containing the Library or a portion of it, either verbatim or with modifications and/or translated straightforwardly into another language. (Hereinafter, translation is included without limitation in the term "modification".)

To protect your rights, we need to make restrictions that forbid anyone to deny you these rights or to ask you to surrender the rights. These restrictions translate to certain responsibilities for you if you distribute copies of the library, or if you modify it.

"Source code" for a work means the preferred form of the work for making modifications to it. For a library, complete source code means all the source code for all modules it contains, plus any associated interface definition files, plus the scripts used to control compilation and installation of the library.

If distribution of object code is made by offering access to copy from a designated place, then offering equivalent access to copy the source code from the same place satisfies the requirement to distribute the source code, even though third parties are not compelled to copy the source along with the object code.

5. A program that contains no derivative of any portion of the Library but is designed to work with the Library by being compiled or linked with it, is called a "work that uses the Library". Such a work, in isolation, is not a derivative work of the Library, and therefore falls outside the scope of this License.

However, linking a "work that uses the Library" with the Library creates an executable that is a derivative of the Library (because it contains portions of the Library), rather than a "work that uses the Library". The executable is therefore covered by this License. Section 6 states terms for distribution of such executables.

When a "work that uses the Library" uses material from a header file that is part of the Library, the object code for the work may be a derivative work of the Library even though the source code is not. Whether this is true is especially significant if the work can be linked without the Library, or if the work is itself a library. The threshold for this to be true is not precisely defined by law.

If such an object file uses only numerical parameters, data structure layouts and accessors, and small macros and small inline functions (ten lines or less in length), then the use of the object file is unrestricted, regardless of whether it is plus a derivative work. (Executables containing this object code plus portions of the Library will still fall under Section 6.)

Otherwise, if the work is a derivative of the Library, you may distribute the object code for the work under the terms of Section 6. Any executables containing that work also fall under Section 6, whether or not they are linked directly with the Library itself.

6. As an exception to the Sections above, you may also compile or link a "work that uses the Library" with the Library to produce a work containing portions of the Library, and distribute that work under terms of your choice, provided that the terms permit modification of the work for the customer's own use and reverse engineering for debugging such modifications.

You must give prominent notice with each copy of the work that the Library is used in it and that the Library and its use are covered by this license. You must supply a copy of this License. If the work during execution displays copyright notices, you must include the copyright notice for the Library among them, as well as a reference directing the user to the copy of this License. Also, you must do one of these things:

a) Accompany the work with the complete corresponding machine-readable source code for the Library including whatever changes were used in the work (which must be distributed under Sections 1 and 2 above); and, if the work is an executable linked with the Library with the complete machine-readable "work that uses the Library", as object code and/or source code, so that the user can modify the Library and then relink to produce a modified executable containing the modified Library. (It is understood that the user who changes the contents of definitions files in the Library will not necessarily be able to recompile the application to use the modified definitions.)

b) Accompany the work with a written offer, valid for at least three years, to give the same user the materials specified in Subsection 6a, above, for a charge no more than the cost of performing this distribution.

c) If distribution of the work is made by offering access to copy from a designated place, offer equivalent access to copy the above specified materials from the same place.

d) Verify that the user has already received a copy of these materials or that you have already sent this user a copy.

For an executable, the required form of the "work that uses the Library" must include any data and utility programs needed for reproducing the executable from it. However, as a special exception, the source code distributed need not include anything that is normally distributed (in either source or binary form) with the major components (compiler, kernel, and so on) of the operating system on which the executable runs, unless that component itself accompanies the executable.

Curl and libcurl 7.19.7 <<http://curl.haxx.se/>>, licensed under a MIT/X derivate license, COPYRIGHT AND PERMISSION NOTICE

Copyright (c) 1996 - 2009, Daniel Stenberg <[daniel@haxx.se](mailto:daniel@haxx.se)>.

All rights reserved.

Permission to use, copy, modify, and distribute this software for any purpose with or without fee is hereby granted, provided that the above copyright notice and this permission notice appear in all copies.

THE SOFTWARE IS PROVIDED "AS IS", WITHOUT WARRANTY OF ANY KIND, EXPRESS OR IMPLIED, INCLUDING BUT NOT LIMITED TO THE WARRANTIES OF MERCHANTABILITY, FITNESS FOR A PARTICULAR PURPOSE AND NONINFRINGEMENT OF THIRD PARTY RIGHTS. IN NO EVENT SHALL THE AUTHORS OR COPYRIGHT HOLDERS BE LIABLE FOR ANY CLAIM, DAMAGES OR OTHER LIABILITY, WHETHER IN AN ACTION OF CONTRACT, TORT OR OTHERWISE, ARISING FROM, OUT OF OR IN CONNECTION WITH THE SOFTWARE OR THE USE OR OTHER DEALINGS IN THE SOFTWARE.

Except as contained in this notice, the name of a copyright holder shall not be used in advertising or otherwise to promote the sale, use or other dealings in this Software without prior written authorization of the copyright holder.

-----

OpenSSL 1.0.0 <<http://www.openssl.org/>>, licensed under both OpenSSL License and Original SSLeay License.

-----

OpenSSL License

=====  
=====

\* Copyright (c) 1998-2008 The OpenSSL Project. All rights reserved.

\* Redistribution and use in source and binary forms, with or without modification, are permitted provided that the following conditions are met:

\* 1. Redistributions of source code must retain the above copyright notice, this list of conditions and the following disclaimer.

\* 2. Redistributions in binary form must reproduce the above copyright notice, this list of conditions and the following disclaimer in the documentation and/or other materials provided with the distribution.

\* 3. All advertising materials mentioning features or use of this software must display the following acknowledgement: "This product includes software developed by the OpenSSL Project for use in the OpenSSL Toolkit. (<http://www.openssl.org/>)"

\* 4. The names "OpenSSL Toolkit" and "OpenSSL Project" must not be used to endorse or promote products derived from this software without prior written permission. For written permission, please contact [openssl-core@openssl.org](mailto:openssl-core@openssl.org).

\* 5. Products derived from this software may not be called "OpenSSL" nor may "OpenSSL" appear in their names without prior written permission of the OpenSSL Project.

\* 6. Redistributions of any form whatsoever must retain the following acknowledgement:

"This product includes software developed by the OpenSSL Project for use in the OpenSSL Toolkit (<http://www.openssl.org/>)"

\* THIS SOFTWARE IS PROVIDED BY THE OPENSSL PROJECT "AS IS" AND ANY EXPRESSED OR IMPLIED WARRANTIES, INCLUDING, BUT NOT LIMITED TO, THE IMPLIED WARRANTIES OF MERCHANTABILITY AND FITNESS FOR A PARTICULAR PURPOSE ARE DISCLAIMED. IN NO EVENT SHALL THE OPENSSL PROJECT OR ITS CONTRIBUTORS BE LIABLE FOR ANY DIRECT, INDIRECT, INCIDENTAL, SPECIAL, EXEMPLARY, OR CONSEQUENTIAL DAMAGES (INCLUDING, BUT NOT LIMITED TO, PROCUREMENT OF SUBSTITUTE GOODS OR SERVICES; LOSS OF USE, DATA, OR PROFITS; OR BUSINESS INTERRUPTION) HOWEVER CAUSED AND ON ANY THEORY OF LIABILITY, WHETHER IN CONTRACT, STRICT LIABILITY, OR TORT (INCLUDING NEGLIGENCE OR OTHERWISE) ARISING IN ANY WAY OUT OF THE USE OF THIS SOFTWARE, EVEN IF ADVISED OF THE POSSIBILITY OF SUCH DAMAGE.

\* THE LICENSE AND DISTRIBUTION TERMS FOR ANY PUBLICLY AVAILABLE VERSION OR DERIVATIVE OF THIS CODE CANNOT BE CHANGED, I.E. THIS CODE CANNOT SIMPLY BE

\* COPIED AND PUT UNDER ANOTHER DISTRIBUTION LICENSE

\* [INCLUDING THE GNU PUBLIC LICENSE.]

-----

Ogg Vorbis <<http://xiph.org/vorbis/>>, licensed as below,

Copyright (c) 2002, Xiph.org Foundation

-----

Redistribution and use in source and binary forms, with or without modification, are permitted provided that the following conditions are met:

- Redistributions of source code must retain the above copyright notice, this list of conditions and the following disclaimer.

\*/

-----

/\* Copyright (C) 1995-1998 Eric Young (eay@cryptsoft.com)

\* All rights reserved.

\* This package is a SSL implementation written

\* by Eric Young (eay@cryptsoft.com).

\* The implementation was written so as to conform with Netscape SSL.

\* This library is free for commercial and non-commercial use as long as

\* the following conditions are aheard to: The following conditions

\* apply to all code found in this distribution, be it the RC4, RSA,

\* lhash, DES, etc. code; not just the SSL code. The SSL

\* documentation

\* is included with this distribution is covered by the same copyright

\* terms

\* except that the holder is Tim Hudson (tjh@cryptsoft.com).

\* Copyright remains Eric Young's, and as such any Copyright notices in

\* the code are not to be removed.

\* If this package is used in a product, Eric Young should be given

\* attribution

\* as the author of the parts of the library used.

\* This can be in the form of a textual message at program startup or

\* in documentation (online or textual) provided with the package.

\* Redistribution and use in source and binary forms, with or

\* without

\* modification, are permitted provided that the following conditions

\* are met:

\* 1. Redistributions of source code must retain the copyright

\* notice, this list of conditions and the following disclaimer.

\* 2. Redistributions in binary form must reproduce the above

\* copyright notice, this list of conditions and the following disclaimer in the documentation and/or other materials provided with the distribution.

\* 3. All advertising materials mentioning features or use of this

\* software must display the following acknowledgement: "This product includes cryptographic software written by Eric Young (eay@cryptsoft.com)"

\* The word 'cryptographic' can be left out if the routines from the library being used are not cryptographic related :-).

\* 4. If you include any Windows specific code (or a derivative thereof) from the apps directory (application code) you must include an acknowledgement: "This product includes software written by Tim Hudson (tjh@cryptsoft.com)"

\* THIS SOFTWARE IS PROVIDED BY ERIC YOUNG "AS IS" AND

\* ANY EXPRESS OR IMPLIED WARRANTIES, INCLUDING, BUT NOT LIMITED TO, THE

\* IMPLIED WARRANTIES OF MERCHANTABILITY AND FITNESS FOR A PARTICULAR PURPOSE

\* ARE DISCLAIMED. IN NO EVENT SHALL THE AUTHOR OR CONTRIBUTORS BE LIABLE

\* FOR ANY DIRECT, INDIRECT, INCIDENTAL, SPECIAL, EXEMPLARY, OR CONSEQUENTIAL DAMAGES (INCLUDING, BUT NOT LIMITED TO, PROCUREMENT OF SUBSTITUTE GOODS OR SERVICES; LOSS OF USE, DATA, OR PROFITS; OR BUSINESS INTERRUPTION) HOWEVER CAUSED AND ON ANY THEORY OF LIABILITY, WHETHER IN CONTRACT, STRICT LIABILITY, OR TORT (INCLUDING NEGLIGENCE OR OTHERWISE) ARISING IN ANY WAY OUT OF THE USE OF THIS SOFTWARE, EVEN IF ADVISED OF THE POSSIBILITY OF SUCH DAMAGE.

\* HOWEVER CAUSED AND ON ANY THEORY OF LIABILITY, WHETHER IN CONTRACT, STRICT

\* LIABILITY, OR TORT (INCLUDING NEGLIGENCE OR OTHERWISE) ARISING IN ANY WAY

\* OUT OF THE USE OF THIS SOFTWARE, EVEN IF ADVISED OF THE POSSIBILITY OF

\* SUCH DAMAGE.

\* THE LICENSE AND DISTRIBUTION TERMS FOR ANY PUBLICLY AVAILABLE

\* VERSION OR DERIVATIVE OF THIS CODE CANNOT BE CHANGED, I.E. THIS CODE

\* CANNOT SIMPLY BE

\* COPIED AND PUT UNDER ANOTHER DISTRIBUTION LICENSE

\* [INCLUDING THE GNU PUBLIC LICENSE.]

-----

-----

-----

-----

iScroll 3.7.1 <<http://cubiq.org/scroll/>>, licensed under the terms of the MIT License as below,

-----

-----

-----

-----

-----

-----

-----

-----

-----

-----

-----

-----

-----

-----

- Redistributions in binary form must reproduce the above copyright notice, this list of conditions and the following disclaimer in the documentation and/or other materials provided with the distribution.

-----

-----

-----

-----

-----

-----

-----

-----

-----

-----

-----

-----

-----

-----

-----

-----

-----

-----

-----

-----

-----

-----

-----

-----

-----

-----

-----

-----

-----

-----

-----

-----

-----

-----

-----

-----

-----

-----

-----

-----

-----

-----

-----

-----

-----

-----

jquery-ui-1.8.9 <<http://jqueryui.com/download/>>, licensed under the terms of the MIT License as below,

Copyright (c) 2011 Paul Bakaus, <http://jqueryui.com/>

-----

-----

-----

-----

-----

-----

-----

-----

-----

-----

-----

-----

-----

-----

-----

-----

-----

-----

-----

-----

-----

-----

-----

-----

-----

-----

-----

-----

-----

-----

-----

-----

-----

-----

-----

-----

-----

-----

-----

-----

-----

-----

-----

-----

-----

- When we speak of free software, we are referring to freedom of use, not price. Our General Public Licenses are designed to make sure that you have the freedom to distribute copies of free software (and charge for this service if you wish); that you receive source code or can get it if you want it; that you can change the software and use pieces of it in new programs; and that you are informed that you can do these things.

-----

-----

-----

-----

-----

-----

-----

-----

-----

-----

-----

-----

-----

-----

-----

-----

-----

-----

-----

-----

-----

-----

-----

-----

-----

-----

-----

-----

-----

-----

-----

-----

-----

-----

-----

-----

-----

-----

-----

-----

-----

-----

-----

-----

-----

-----

of this Lesser General Public License (also called "this License"). Each licensee is addressed as "you".

-----

-----

-----

-----

-----

-----

-----

-----

-----

-----

-----

-----

-----

-----

-----

-----

-----

-----

-----

-----

-----

-----

-----

-----

-----

-----

-----

-----

-----

-----

-----

-----

-----

-----

-----

-----

-----

-----

-----

-----

-----

-----

-----

-----

-----

-----

that they refer to the ordinary GNU General Public License, version 2, instead of this License. (If a newer version than version 2 of the ordinary GNU General Public License has appeared, then you can specify this version instead if you wish.) Do not make any other change in these notices.

-----

-----

-----

-----

-----

-----

-----

-----

-----

-----

-----

-----

-----

-----

-----

-----

-----

-----

-----

-----

-----

-----

-----

-----

-----

-----

-----

-----

-----



Specifications are subject to change without notice  
© 2013 Koninklijke Philips Electronics N.V.  
All rights reserved.

AW5000\_10\_UM\_V2.0

