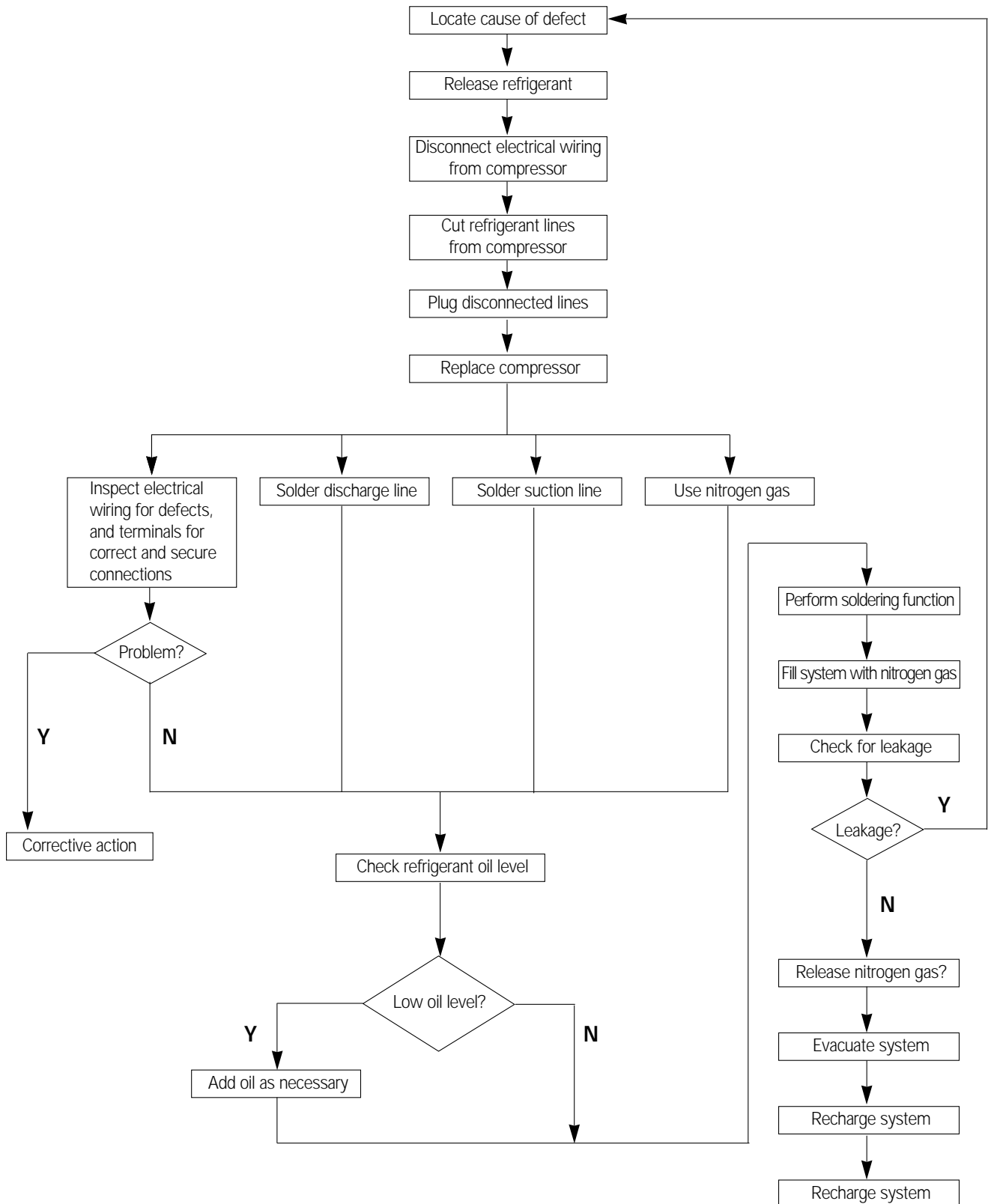


4. Disassembly and Reassembly

4-1 Compressor Replacement Flow Chart



4-2 Checking the oil

Fill the transparent container with 10cc of oil, and then conduct the test.

4-2-1 Oil quality

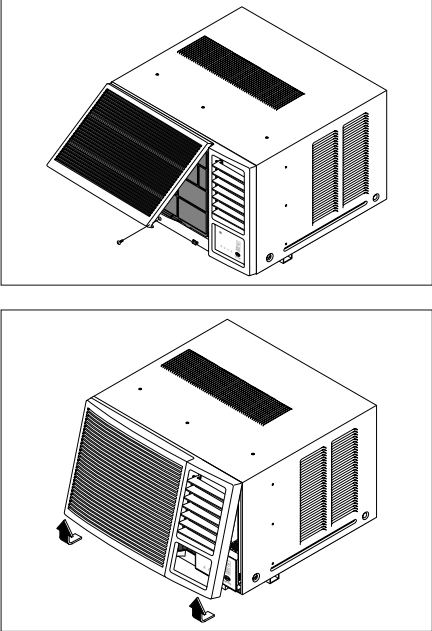
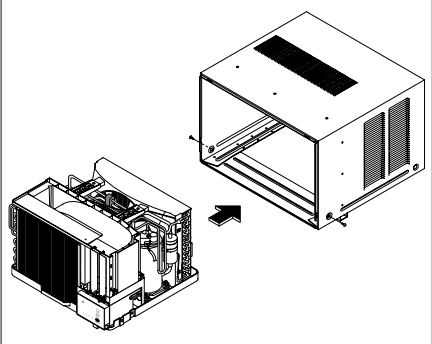
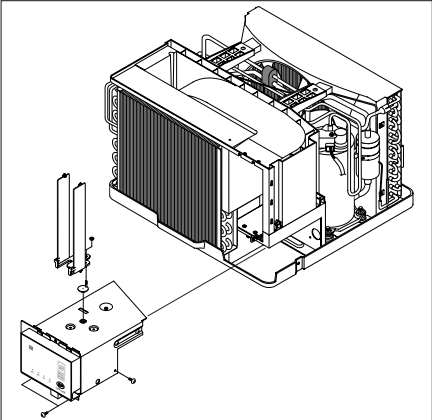
Refrigerant Cycle	Oil Condition		Remarks
	Color	Odor	
Normal	Light Yellow	No Odor	Return with the system
Over-heated	Brown	-	Oil Change
Compressor damage	Dark brown	Pungent oil	Oil Change

4-2-2 Replacing and refilling the refrigerant oil

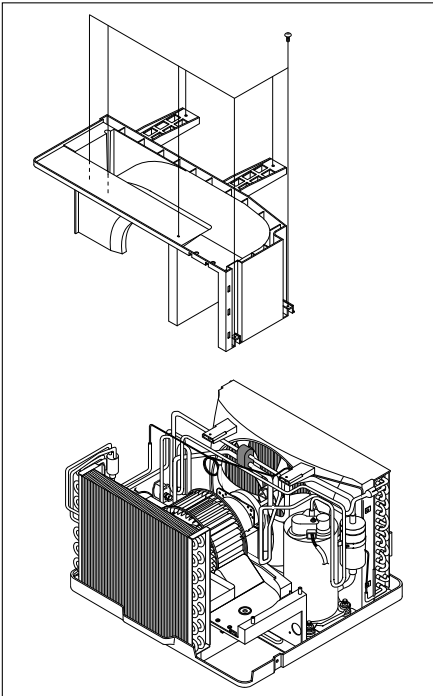
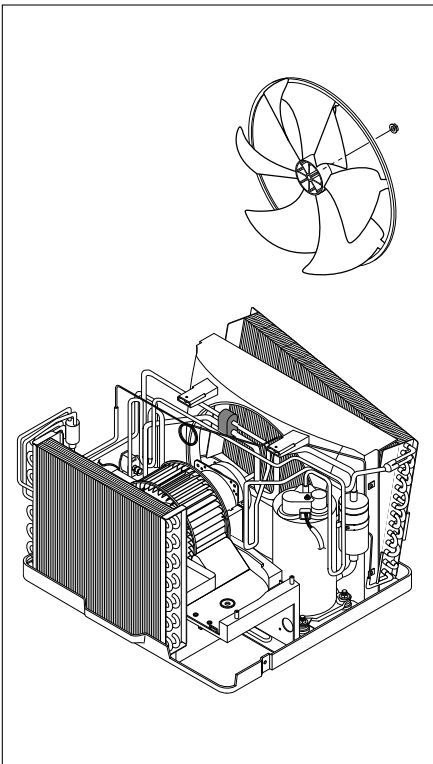
1. Replacing the compressor - Do not fill the system with oil as the compressor is already charged.
2. Replacing the condenser - Refill 50cc.
3. Replacing the evaporator - Refill 50cc.
4. Replacing the refrigerant - Refill 30cc.
5. The high pressure side is filled up with oil after the vacuum is completed.
6. When the refrigerant leaks, it is generally not necessary to refill the oil if the leakage is not severe.

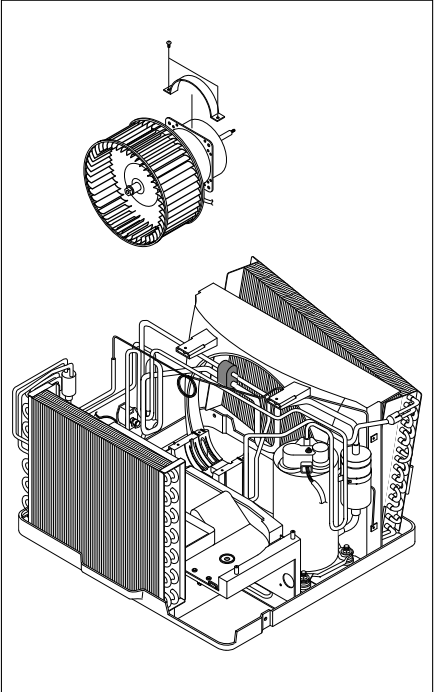
4-4 Disassembly and Reassembly Procedure

Stop operating the air conditioner, and pull out the power cord before repair.

No.	Part name	Procedures	Remarks
①	Ass'y Grill	<ol style="list-style-type: none"> 1. Pull the grille air inlet and remove the screw on the grille 2. Hold the lower part of the grill with two hands while pressing down on both sides of the lower part of the cabinet, pull it forward by about 30, and then lift it up for removal. 	 <p>The diagram consists of two parts. The top part shows a perspective view of the air conditioner with the front grille partially open. A screw is being removed from the top of the grille. The bottom part shows the grille assembly being pulled forward and then lifted away from the main cabinet.</p>
②	Ass'y Cabinet	<ol style="list-style-type: none"> 1. Remove the screws on both sides of the cabinet to disconnect the cabinet and frame. 2. Pull the handle on the front side of the bottom, and remove the unit from the cabinet. 	 <p>The diagram shows two views. On the left, the internal components of the air conditioner are shown with the cabinet removed. On the right, a perspective view shows the cabinet being pulled away from the main frame. An arrow indicates the direction of removal.</p>
③	Ass'y Control	<ol style="list-style-type: none"> 1. Remove 6 screws, and earth wire screw. 2. Remove four lead wire assemblies and the deice sensor from the condenser. 3. Remove the blade V and arm blade. 4. Take out the control box forward. 	 <p>The diagram shows a perspective view of the air conditioner's internal components. A control box is being pulled forward from its position inside the unit. A separate view shows the control box with its screws and earth wire screw removed.</p>

Disassembly and Reassembly

No.	Part name	Procedures	Remarks
④	Frame Up	1. Remove 10 screws on the Frame Up.	
⑤	Case Cond & Propeller Fan	<p>1. Remove two screws on the bottom side, and 5 screws on the case cond.</p> <p>2. Remove the nut flange, and remove the propeller fan</p>	

No.	Part name	Procedures	Remarks
⑥	Blower & Motor	<ol style="list-style-type: none"> 1. Remove two screws on the clip motor, and remove the clip motor. 2. Move the motor & blower toward the evap, and lift up the motor & blower from the frame low. 	
⑦	Cond Casing	<ol style="list-style-type: none"> 1. Remove the cond casing 	